

USER: ah1299

OFFICE: RCH

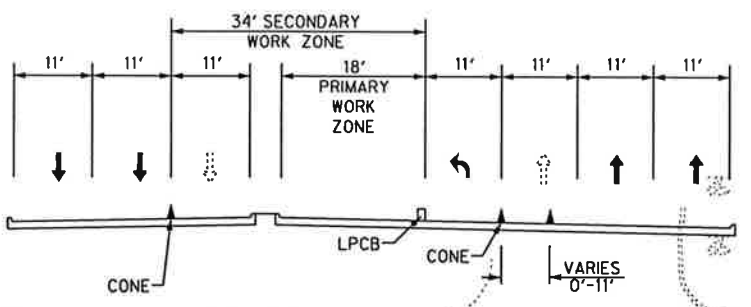
PROJECT: 29350

FILE: 29350 TCP01-01-01.dgn

TIME: 3:14:15 PM

DATE: 10/24/2013

0 10 20 30 40 60
SCALE IN FEET



PROPOSED POWER POLES TO BE INSTALLED BY OTHERS (COORDINATE SCHEDULING WITH ONCOR). REFER TO SHEET ELE-0

CONES @ 60' SPACING MAXIMUM

CONTRACTOR SHALL CLOSE EASTERN SOUTH BOUND LEFT TURN LANE ON MARSH

SEE PHASE 1B, STEP 4 TCP FOR CONSTRUCTION OF LATERAL CROSSING

SEE PHASE 1B, STEP 2 TCP FOR CONSTRUCTION OF LATERAL CROSSING

SEE PHASE 1B, STEP 3 TCP FOR CONSTRUCTION OF LATERAL CROSSING

SEE PHASE 1B, STEP 1 TCP FOR CONSTRUCTION OF LATERAL CROSSING

CONES @ 60' SPACING MAXIMUM

CONES @ 60' SPACING MAXIMUM

LEFT LANE MUST TURN LEFT
R3-7L 30"x30"

PROPOSED POWER POLES TO BE INSTALLED BY OTHERS (COORDINATE SCHEDULING WITH ONCOR). REFER TO SHEET ELE-0

CONES @ 60' SPACING MAXIMUM

100' DOWNSTREAM TAPER CONES @ 30' SPACING MAXIMUM

LEGEND

- ▲ CONES
- OPPOSING TRAFFIC LANE DIVIDERS (OTLD)
- DRUMS
- ▬ TYPE III BARRICADE
- ▬ LOW PROFILE CONCRETE BARRIER
- ← LANES TO BE OPEN AT ALL TIMES
- ⇄ LANES TO BE CLOSED DURING OFF-PEAK HOURS ONLY
- ▬ DUCT BANK TRENCH
- ▬ DUCT BANK BORING
- (N) NON-REMOVABLE
- (R) REMOVABLE
- (S) 4" WHITE BROKEN
- (T) 4" WHITE SOLID
- (Y) PREVIOUS PAVEMENT MARKINGS
- (Z) EXISTING RAISED PAVEMENT MARKINGS

- NOTES:
- ALL LOW PROFILE CONCRETE BARRIERS SHALL BEGIN WITH A TYPE 2 LPCB. END LOW PROFILE CONCRETE BARRIERS WITH A TYPE 2 LPCB WHEN IT CAN BE IMPACTED BY OPPOSING TRAFFIC.
 - CONTRACTOR TO ADD NECESSARY SIGNAGE AS NEEDED ACCORDING TO TMUTCD.
 - CONTRACTOR TO ENSURE THAT EQUIPMENT DOES NOT BLOCK LINE OF SIGHT FOR DRIVERS.



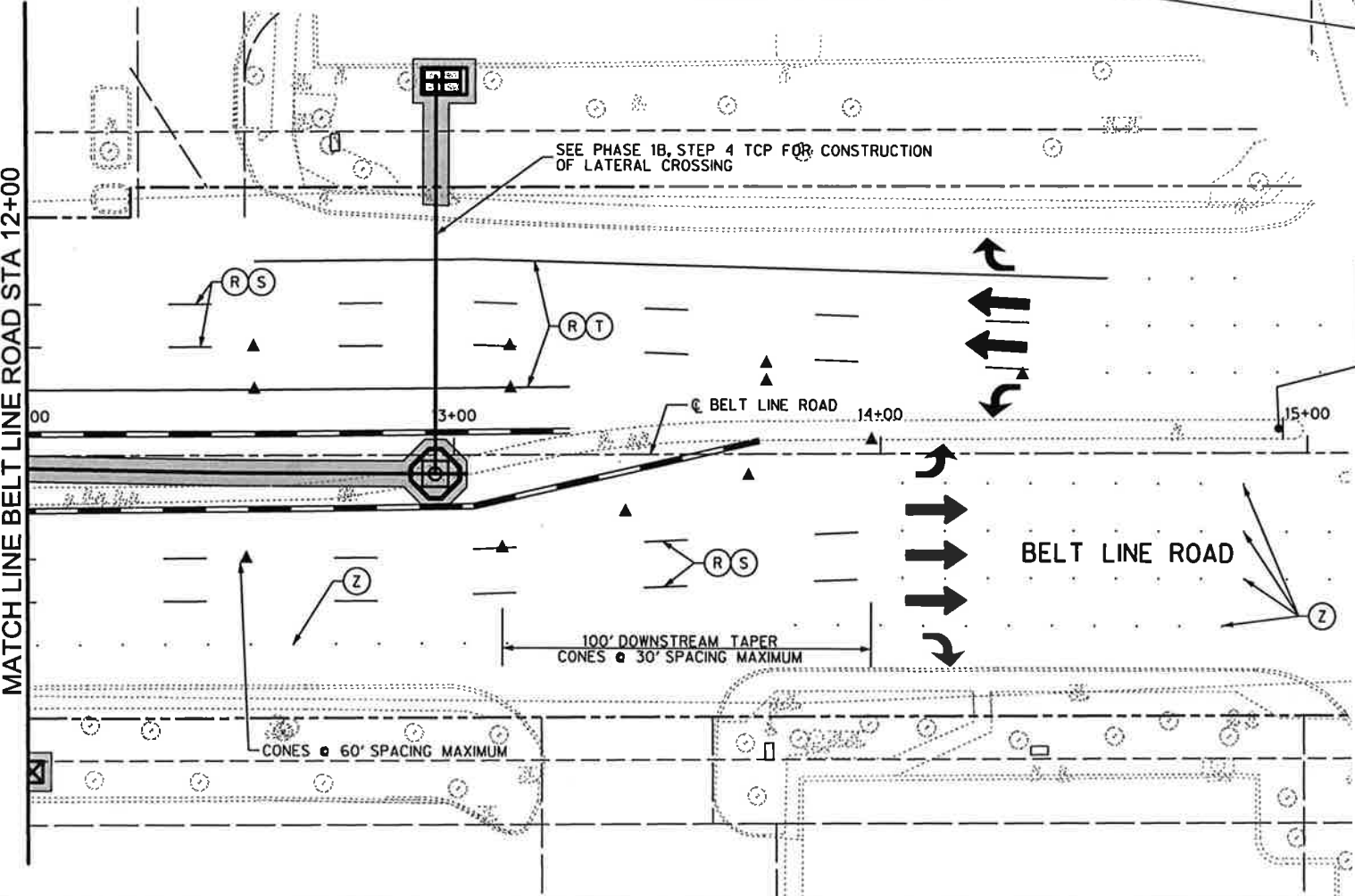
Signature of Registrant: *M.E. Romanowski* Date: 10/25/13
P.E.

FIRM REGISTRATION NUMBER: 312

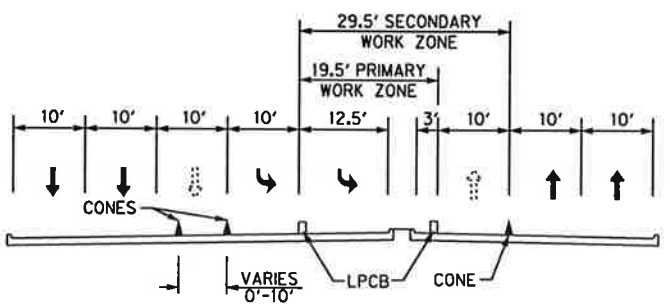
MATCH LINE BELT LINE ROAD STA 12+00

MATCH LINE BELT LINE ROAD STA 12+00

SHEET 127 OF 235



LEFT LANE MUST TURN LEFT
R3-7L 30"x30"



SECTION B-B (N.T.S.)

NO.	REVISION	BY	DATE
HALFF 1201 NORTH BOWSER ROAD, RICHARDSON, TEXAS 75081-2275 TEL (214) 348-8200 FAX (214) 739-0065			
PROJECT	DESIGN	DRAWN	DATE
29350	HALFF	HALFF	OCT. 2013
FILE	SHEET		
29350 TCP1-01-01	TCP-1		