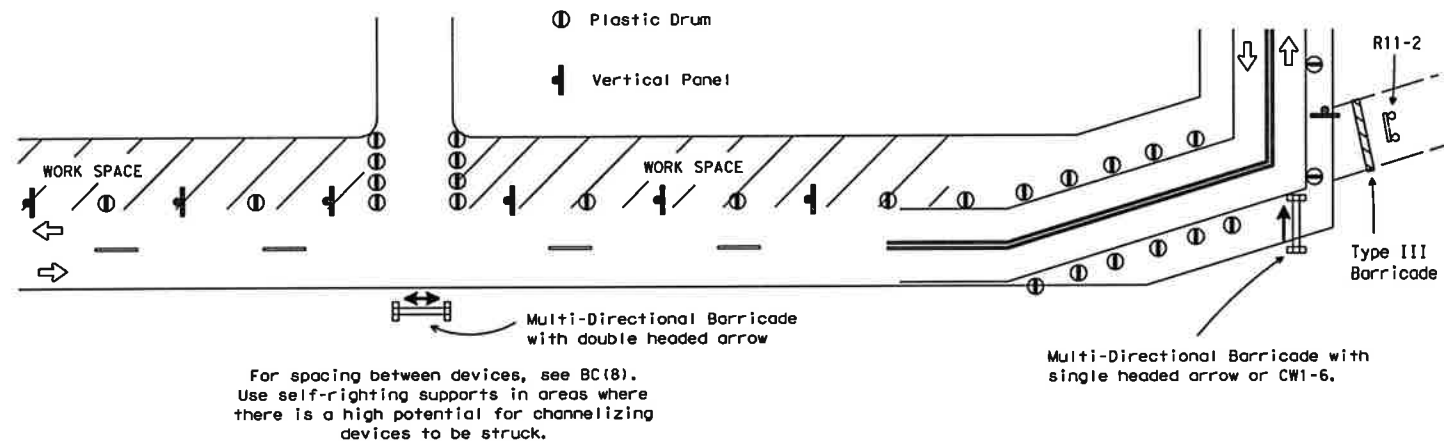
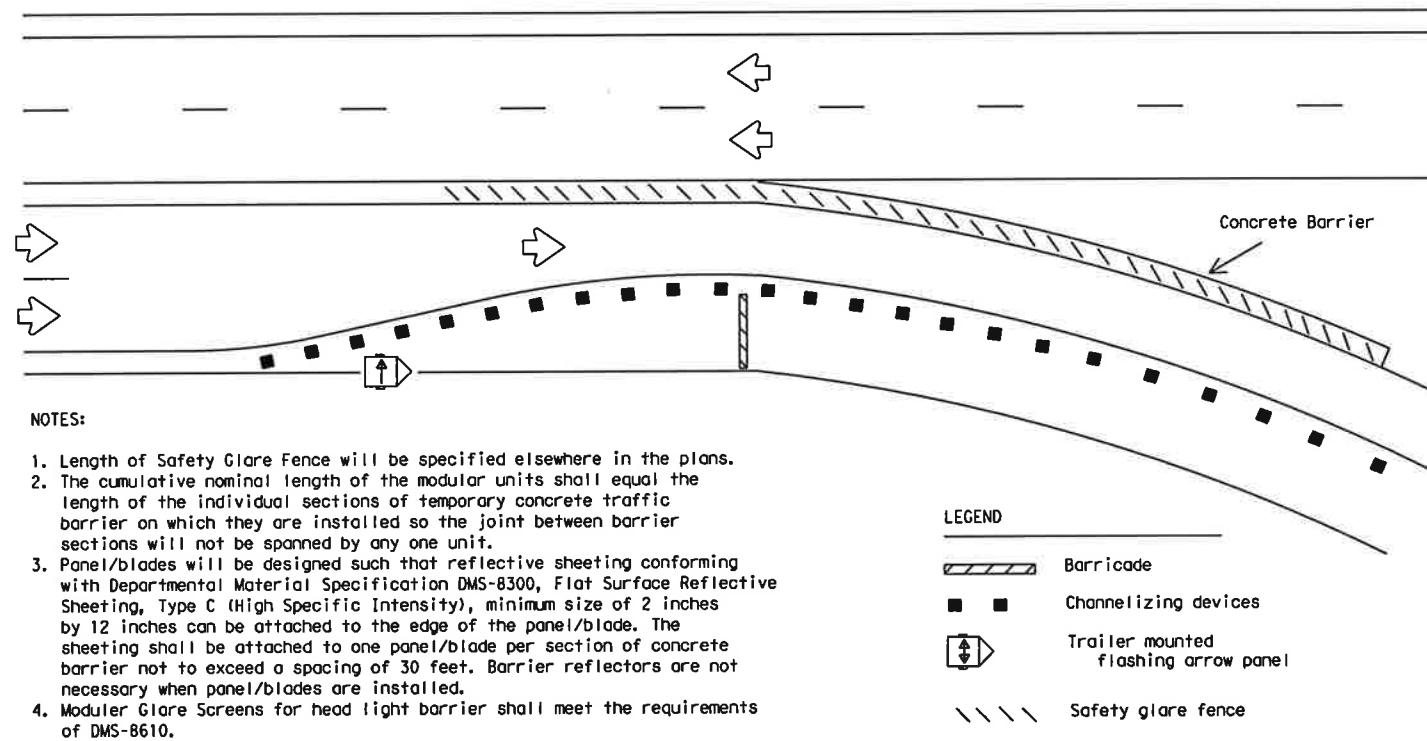


DISCLAIMER: The use of this standard is governed by the "Texas Engineering Practice Act". No warranty of any kind is made by TxDOT for any purpose whatsoever. TxDOT assumes no responsibility for the conversion of this standard to other formats or for incorrect results or damages resulting from its use.

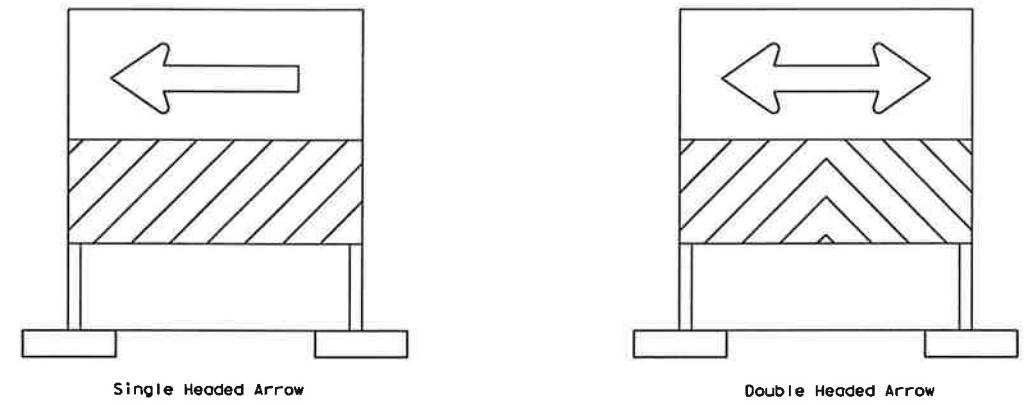
## CHANNELIZING DEVICES FOR URBAN ROADWAY TYPE PROJECT



## BARRIER DELINEATION WITH SAFETY GLARE FENCE

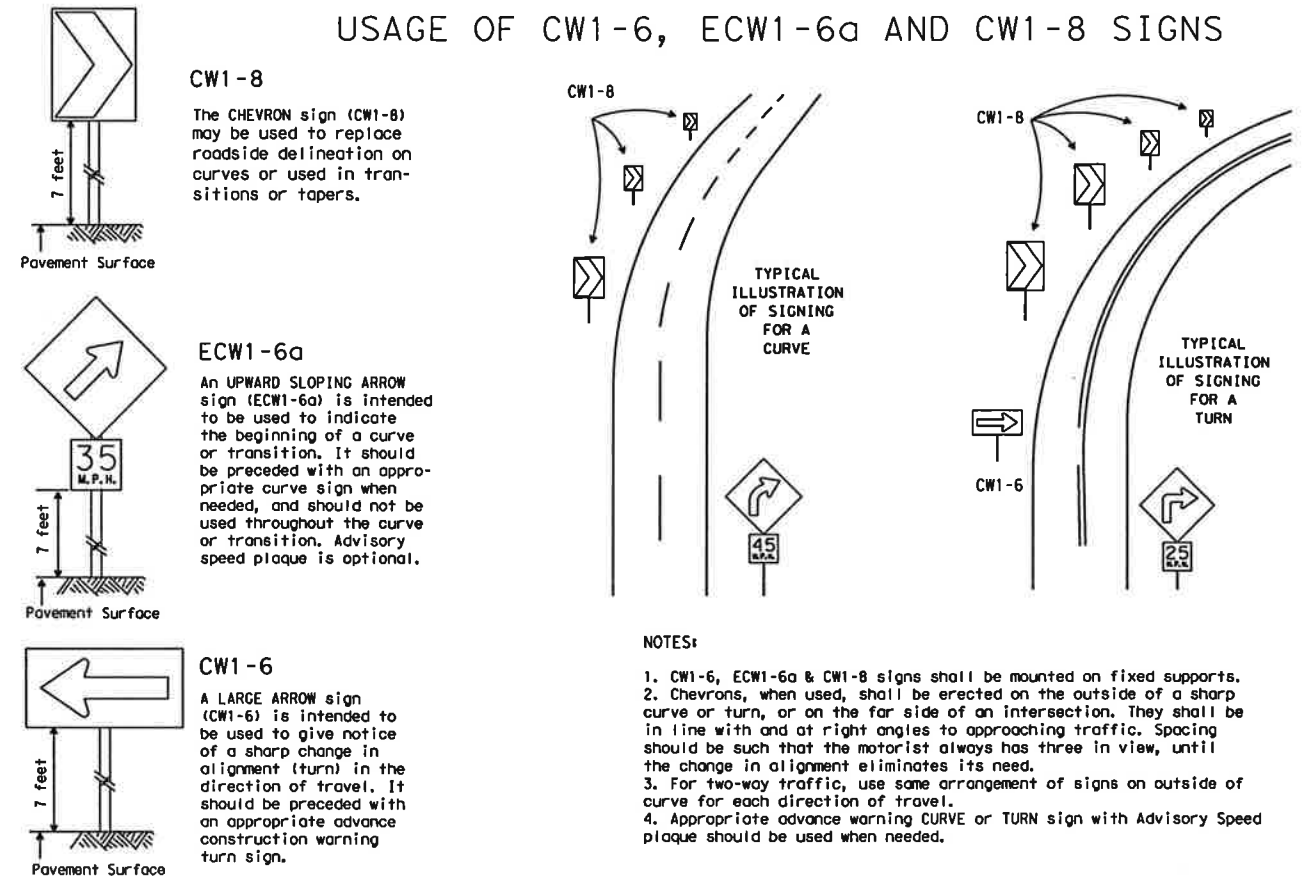


## MULTI-DIRECTIONAL BARRICADE



- Multi-directional barricade shall not be used for lane closures.
- May be used for sharp changes in alignment, or across roadway from stem of "T" intersection.
- Typically used for Intermediate Term Stationary, Short Term Stationary or Short Duration work zone operations.
- See the CWZTCD List for approved designs.

## USAGE OF CW1-6, ECW1-6a AND CW1-8 SIGNS



Only pre-qualified products shall be used. A copy of the "Compliant Work Zone Traffic Control Devices List" (CWZTCD) describes pre-qualified products and their sources and may be obtained by contacting:

Standards Engineer  
Traffic Operations Division - TE  
Texas Department of Transportation  
125 East 11th Street  
Austin, Texas 78701-2483  
Phone (512) 416-3120  
Fax (512) 416-3299

Instructions to locate the "CWZTCD" on TxDOT website are:

Start at website - [www.dot.state.tx.us](http://www.dot.state.tx.us)  
Click on "About TxDOT",  
Click on "Organizational Chart",  
Click on "Traffic Operations Box",  
Click on "Compliant Work Zone Traffic Control Devices",  
Click on "View PDF".  
This site is printable.

PREQUALIFICATION PROCEDURES ARE OBTAINED FROM:

CONSTRUCTION DIVISION-MATERIALS AND TESTS SECTION  
TEXAS DEPARTMENT OF TRANSPORTATION (TxDOT)  
125 EAST 11th STREET  
AUSTIN, TX 78701-2483

DEPARTMENTAL MATERIAL SPECIFICATIONS

FLAT SURFACE REFLECTIVE SHEETING DMS-8300  
DELINEATORS AND OBJECT MARKERS DMS-8600  
MODULER GLARE SCREENS DMS-8610

COLOR	USAGE	SIGN SHEETING
ORANGE	BACKGROUND	TYPE E (FLUORESCENT PRISMATIC)
WHITE	BACKGROUND	TYPE C (HIGH SPECIFIC INTENSITY)
BLACK	LEGEND & BORDERS	VINYL NON-REFLECTIVE SHEETING

REFER TO THE BC SHEETS FOR SHEETING REQUIREMENT ON CHANNELIZING DEVICES.

The five categories of work duration and their time at a location shall be:

- Long-term stationary is work that occupies a location more than 3 days.
- Intermediate-term stationary is work that occupies a location more than one daylight period up to 3 days, or nighttime work lasting more than 1 hour.
- Short-term stationary is daytime work that occupies a location for more than 1 hour, but less than 12 hours.
- Short duration is work that occupies a location up to 1 hour.
- Mobile is work that moves intermittently or continuously.

Texas Department of Transportation  
Traffic Operations Division

## TRAFFIC CONTROL PLAN TYPICAL DETAILS

WZ(TD)-03

© TxDOT February 1998		DN: TxDOT	CK: TxDOT	DN: TxDOT	CK: TxDOT
4-98	REVISIONS	CONT	SECT	JOB	HIGHWAY
3-03					
		DIST		COUNTY	SHEET NO.