

USER: oh1770

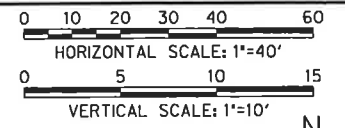
OFFICE: DAL

PROJECT: 29350

FILE: 29350 ELEC 04.dgn

TIME: 11:23:58 AM

DATE: 12/19/2013



EXISTING UTILITY LOCATIONS SHOWN ARE SCHEMATIC IN NATURE AND MAY NOT ACCURATELY REFLECT THE SIZE AND LOCATION OF EACH PARTICULAR UTILITY. SOME UTILITY LINES MAY NOT BE SHOWN. CONTRACTOR SHALL ASSUME RESPONSIBILITY FOR ACTUAL FIELD LOCATION AND PROTECTION OF ALL EXISTING UTILITIES WHETHER SHOWN OR NOT. CONTRACTOR SHALL ALSO ASSUME RESPONSIBILITY FOR REPAIRS TO EXISTING UTILITIES, WHETHER SHOWN OR NOT, DAMAGED BY CONTRACTOR'S ACTIVITIES. DIFFERENCES IN HORIZONTAL OR VERTICAL LOCATION OF EXISTING UTILITIES SHALL NOT BE A BASIS FOR ADDITIONAL COMPENSATION. CALL 1-800-344-8377 TWO WORKING DAYS PRIOR TO CONSTRUCTION FOR ONSITE LOCATIONS.

**LEGEND**

- PROPOSED PULL OR SERVICE BOX (AS NOTED)
- PROPOSED POWER POLE WITH RISER (POWER POLE BY OTHERS)
- PROPOSED TRANSFORMER PAD
- PROPOSED VISTA GEAR PAD
- PROPOSED PME PAD
- PROPOSED ELECTRICAL DUCT BANK MANHOLE
- PROPOSED ELECTRIC DUCT BANK BY OTHER THAN OPEN CUT
- PROPOSED ELECTRIC DUCT BANK BY OPEN CUT
- PROP JOINT TRENCH (FRANCHISE & ONCOR) (SEE NOTE 4)
- PROPOSED CABINET FOR ONCOR PROVIDED METER

**NOTE:**

1. ALL PROFILE ELEVATIONS FOR ELECTRICAL DUCT BANK ARE FOR OUTSIDE BOTTOM OF DUCT BANK UNLESS OTHERWISE SPECIFIED.
2. ALL PROFILE ELEVATIONS FOR ELECTRICAL MANHOLES ARE FOR OUTSIDE BOTTOM OF MANHOLE FLOOR UNLESS OTHERWISE SPECIFIED.
3. STEEL ENCASMENT PIPE SIZES SHOWN ARE APPROXIMATE AND SHALL BE AS REQUIRED FOR CONSTRUCTION AND RECOMMENDED BY PIPE SPACER MANUFACTURER. PIPE SPACERS SHALL BE DESIGNED AND SUPPLIED BY UNDERGROUND DEVICES, INC. OR APPROVED EQUAL.
4. ALL ELECTRIC LOAD CABLES TO BE INSTALLED IN JOINT TRENCH WITH RELOCATED FRANCHISE UTILITIES, EXCEPT AS NECESSARY TO CONNECT TO ELECTRICAL EQUIPMENT OR AS NOTED ON THE PLANS. FOR JOINT TRENCH SEE TELECOM RELOCATION PLAN SHEETS.



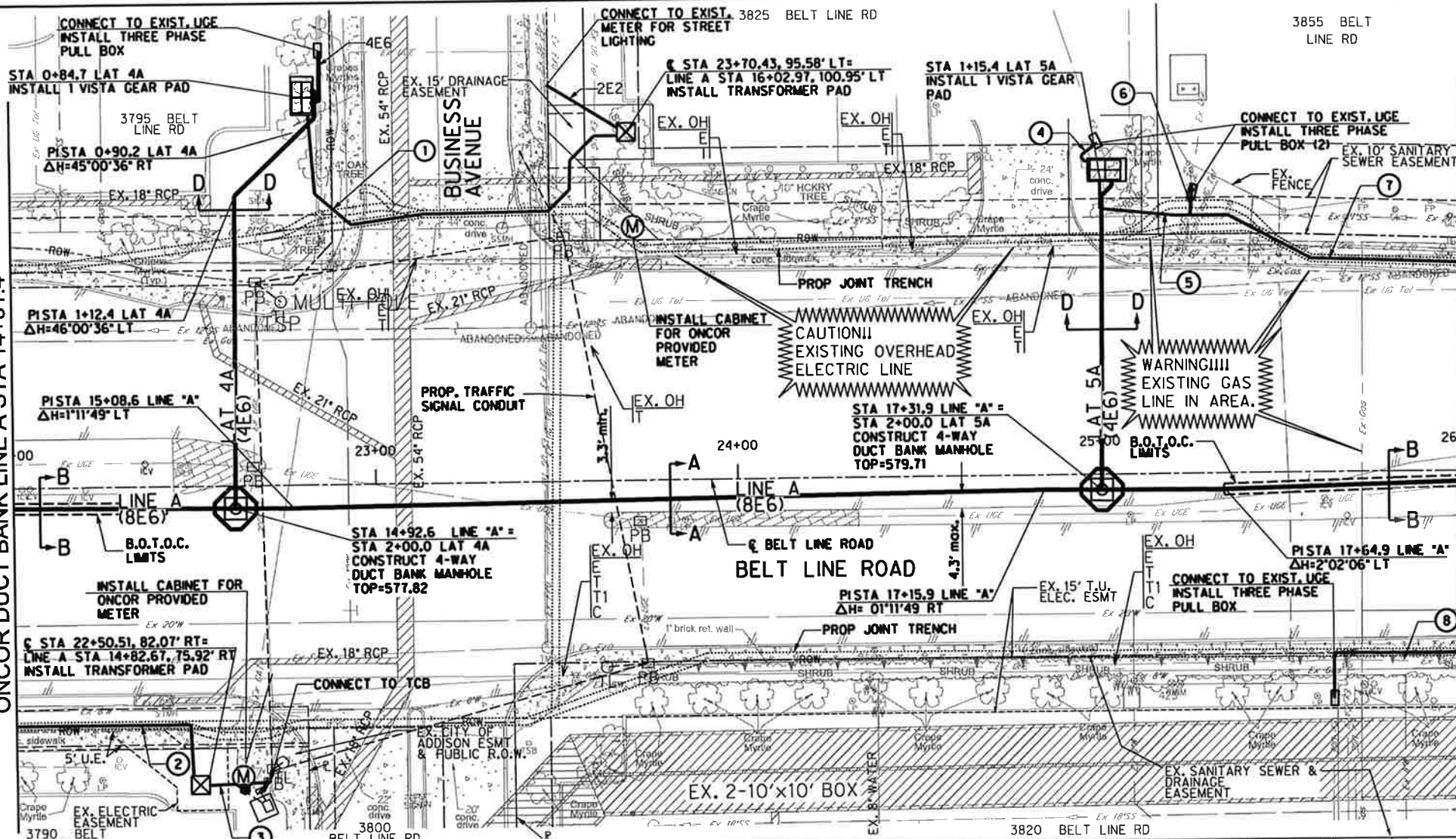
*Signature* P.E. 12-19-2013  
Signature of Registrant Date

FIRM REGISTRATION NUMBER: 312

NO.	REVISION	BY	DATE
<b>TOWN OF ADDISON</b> DALLAS COUNTY, TEXAS <b>BELT LINE ROAD</b> UNDERGROUND ELECTRICAL <b>ONCOR DUCT BANK PLAN AND PROFILE</b> BELT LINE RD STA 22+00 TO STA 26+00			
<b>HALFF</b> <small>1201 NORTH BOWSER ROAD, RICHARDSON, TEXAS 75081-2275          TEL (214) 346-6200 FAX (214) 738-0085</small>			
PROJECT	DESIGN	DRAWN	DATE
29350	HALFF	HALFF	NOV. 2013
FILE	SHEET		
29350 ELEC 04	ELE-4		

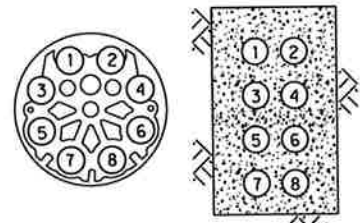
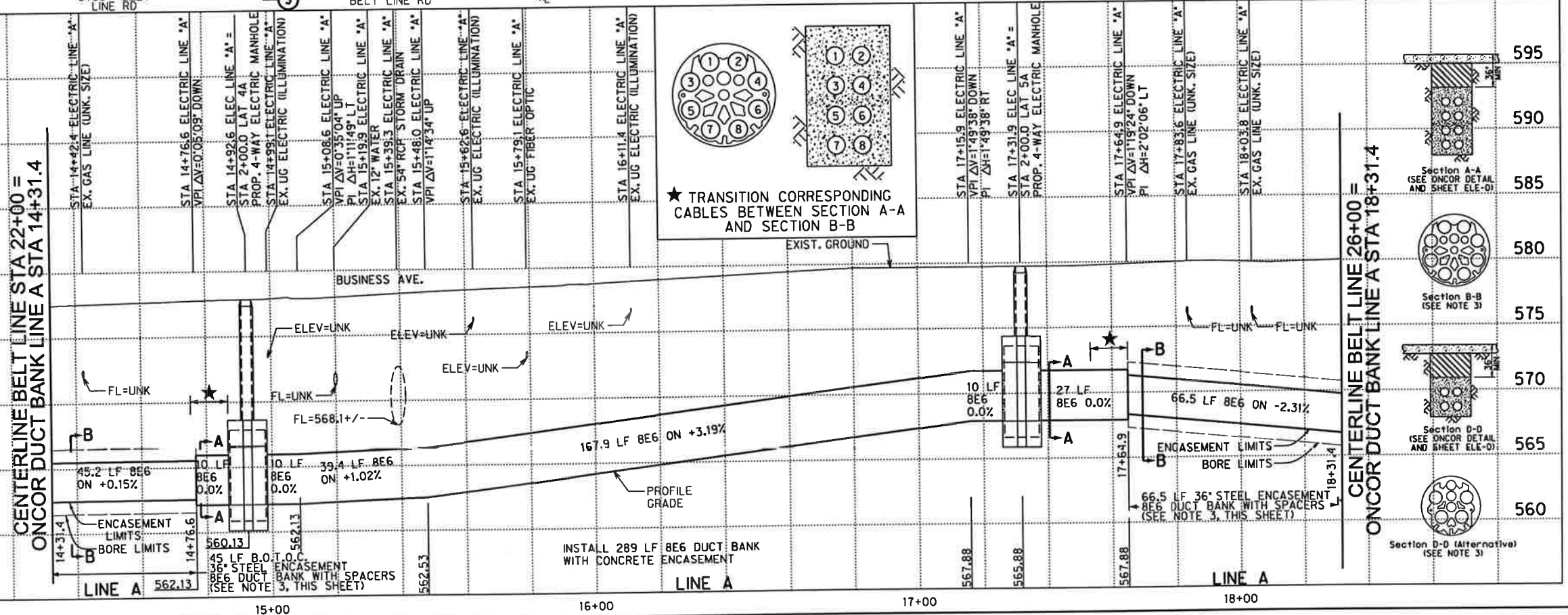
CENTERLINE BELT LINE STA 22+00 = ONCOR DUCT BANK LINE A STA 14+31.4

CENTERLINE BELT LINE 26+00 = ONCOR DUCT BANK LINE A STA 18+31.4

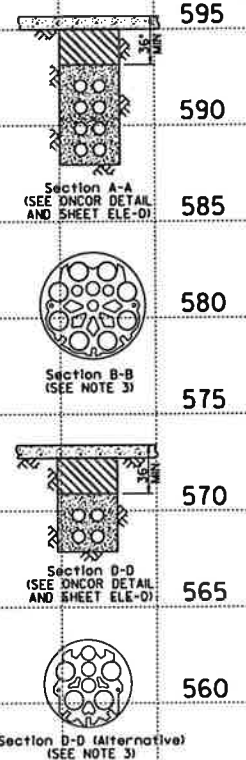


**LOAD CABLES**  
(SEE NOTE 4)

NO.	L	TYPE
1	140'	2E4
2	58'	2E4
3	17'	2E2
4	20'	2E4
5	35'	6E4
6	6'	2E4
7	76'	4E4
8	36'	2E4



★ TRANSITION CORRESPONDING CABLES BETWEEN SECTION A-A AND SECTION B-B



INSTALL 289 LF BE6 DUCT BANK WITH CONCRETE ENCASMENT

45 LF B.O.T.O.C. BE6 DUCT BANK WITH SPACERS (SEE NOTE 3, THIS SHEET)