

USER: dh1770

OFFICE: DAL

PROJECT: 29350

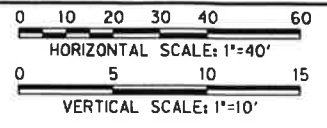
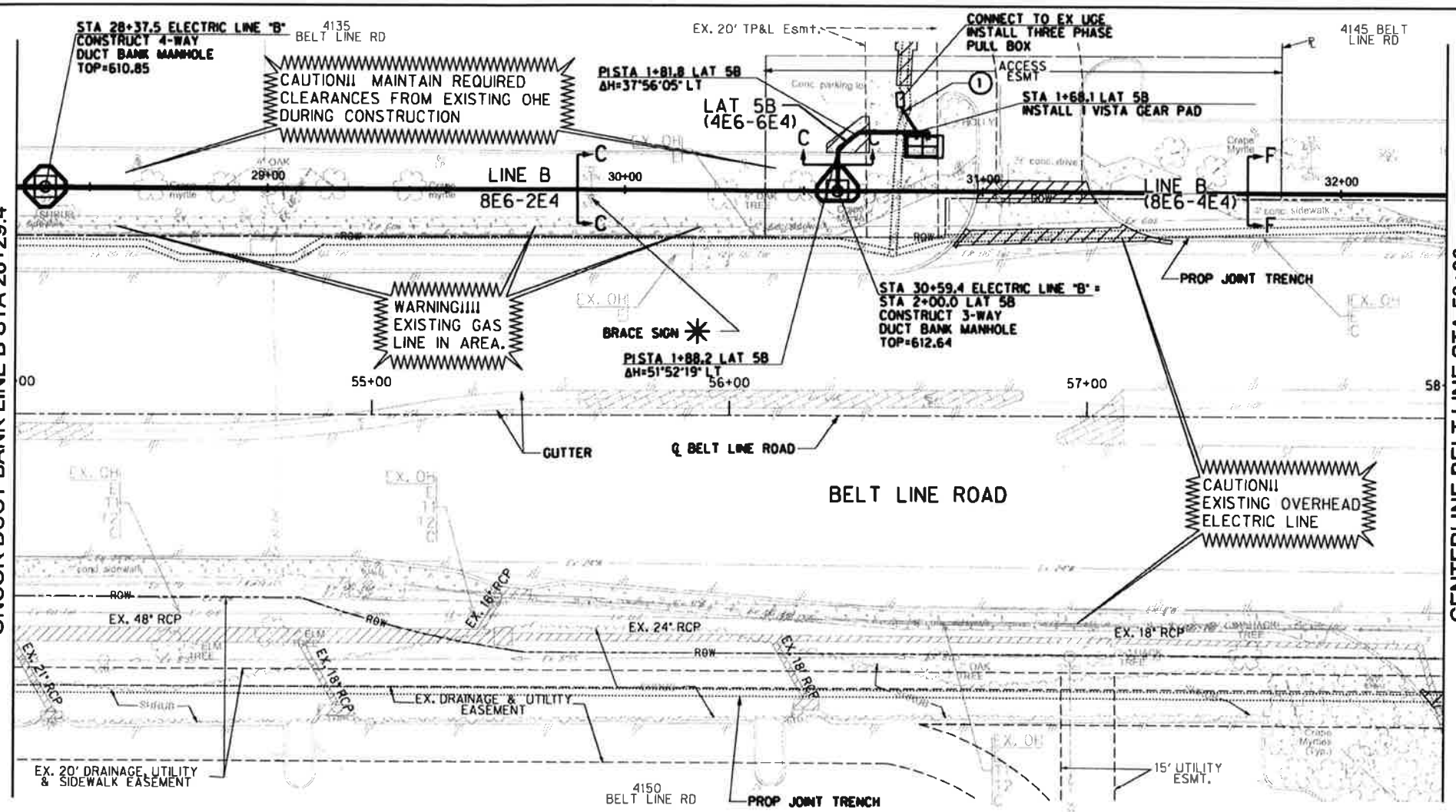
FILE: 29350 ELEC 12.dgn

TIME: 4:55:38 PM

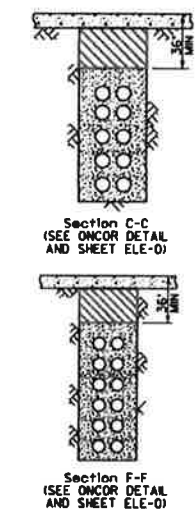
DATE: 1/21/2014

CENTERLINE BELT LINE STA 54+00 =
ONCOR DUCT BANK LINE B STA 28+29.4

CENTERLINE BELT LINE STA 58+00 =
ONCOR DUCT BANK LINE B STA 32+29.4



EXISTING UTILITY LOCATIONS SHOWN ARE SCHEMATIC IN NATURE AND MAY NOT ACCURATELY REFLECT THE SIZE AND LOCATION OF EACH PARTICULAR UTILITY. SOME UTILITY LINES MAY NOT BE SHOWN. CONTRACTOR SHALL ASSUME RESPONSIBILITY FOR ACTUAL FIELD LOCATION AND PROTECTION OF ALL EXISTING UTILITIES WHETHER SHOWN OR NOT. CONTRACTOR SHALL ALSO ASSUME RESPONSIBILITY FOR REPAIRS TO EXISTING UTILITIES, WHETHER SHOWN OR NOT, DAMAGED BY CONTRACTOR'S ACTIVITIES. DIFFERENCES IN HORIZONTAL OR VERTICAL LOCATION OF EXISTING UTILITIES SHALL NOT BE A BASIS FOR ADDITIONAL COMPENSATION. CALL 1-800-344-8377 TWO WORKING DAYS PRIOR TO CONSTRUCTION FOR ONSITE LOCATIONS.



- LEGEND**
- PROPOSED PULL OR SERVICE BOX (AS NOTED)
 - PROPOSED POWER POLE WITH RISER (POWER POLE BY OTHERS)
 - PROPOSED TRANSFORMER PAD
 - PROPOSED VISTA GEAR PAD
 - PROPOSED PME PAD
 - PROPOSED ELECTRICAL DUCT BANK MANHOLE
 - PROPOSED ELECTRIC DUCT BANK BY OTHER THAN OPEN CUT
 - PROPOSED ELECTRIC DUCT BANK BY OPEN CUT
 - PROP JOINT TRENCH (FRANCHISE & ONCOR) (SEE NOTE 4)
 - PROPOSED CABINET FOR ONCOR PROVIDED METER

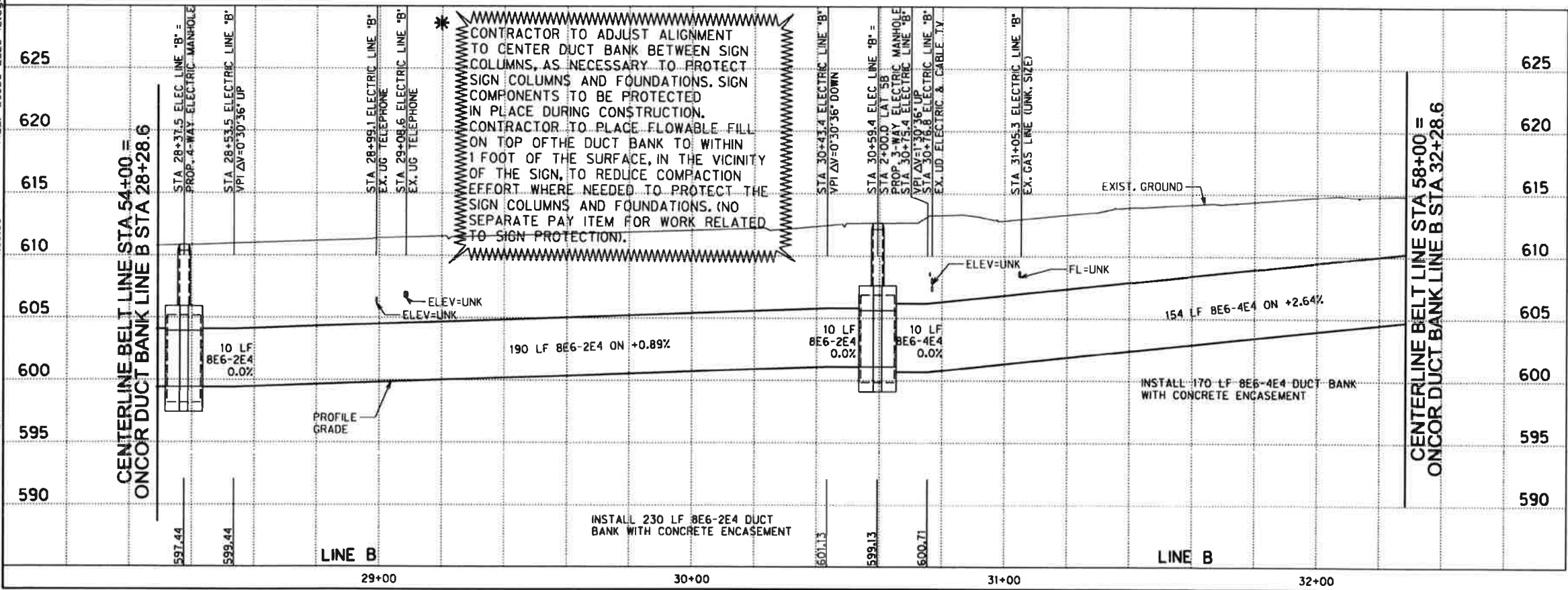
LOAD CABLES
(SEE NOTE 4)

Symbol	L	TYPE
	8'	2E4

- NOTE:**
- ALL PROFILE ELEVATIONS FOR ELECTRICAL DUCT BANK ARE FOR OUTSIDE BOTTOM OF DUCT BANK UNLESS OTHERWISE SPECIFIED.
 - ALL PROFILE ELEVATIONS FOR ELECTRICAL MANHOLES ARE FOR OUTSIDE BOTTOM OF MANHOLE FLOOR UNLESS OTHERWISE SPECIFIED.
 - STEEL ENCASUREMENT PIPE SIZES SHOWN ARE APPROXIMATE AND SHALL BE AS REQUIRED FOR CONSTRUCTION AND RECOMMENDED BY PIPE SPACER MANUFACTURER. PIPE SPACERS SHALL BE DESIGNED AND SUPPLIED BY UNDERGROUND DEVICES, INC. OR APPROVED EQUAL.
 - ALL ELECTRIC LOAD CABLES TO BE INSTALLED IN JOINT TRENCH WITH RELOCATED FRANCHISE UTILITIES, EXCEPT AS NECESSARY TO CONNECT TO ELECTRICAL EQUIPMENT OR AS NOTED ON THE PLANS. FOR JOINT TRENCH SEE TELECOM RELOCATION PLAN SHEETS.



Ch Moran P.E. 1-21-14
Signature of Registrant Date
FIRM REGISTRATION NUMBER: 312



CONTRACTOR TO ADJUST ALIGNMENT TO CENTER DUCT BANK BETWEEN SIGN COLUMNS, AS NECESSARY TO PROTECT SIGN COLUMNS AND FOUNDATIONS. SIGN COMPONENTS TO BE PROTECTED IN PLACE DURING CONSTRUCTION. CONTRACTOR TO PLACE FLOWABLE FILL ON TOP OF THE DUCT BANK TO WITHIN 1 FOOT OF THE SURFACE, IN THE VICINITY OF THE SIGN, TO REDUCE COMPACTION EFFORT WHERE NEEDED TO PROTECT THE SIGN COLUMNS AND FOUNDATIONS. (NO SEPARATE PAY ITEM FOR WORK RELATED TO SIGN PROTECTION).

NO.	REVISION	BY	DATE

TOWN OF ADDISON
DALLAS COUNTY, TEXAS

BELT LINE ROAD
UNDERGROUND ELECTRICAL

ONCOR DUCT BANK PLAN AND PROFILE
BELT LINE RD STA 54+00 TO STA 58+00

HALFF 1301 NORTH BOWBER ROAD, RICHARDSON, TEXAS 75081-2273
TEL (214) 348-8200 FAX (214) 736-0086

PROJECT	DESIGN	DRAWN	DATE	FILE	SHEET
29350	HALFF	HALFF	NOV, 2013	29350 ELEC 12	ELE-12

SHEET 86 OF 235