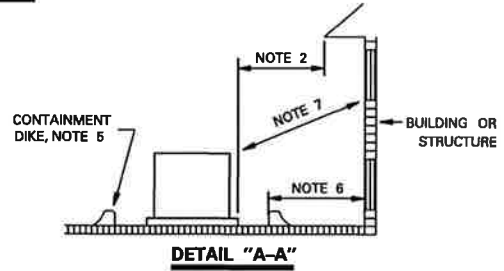


TRANSF. TYPE	BUILDING CONSTRUCTION		WINDOWS, DOORS & VENTS	FIRE ESCAPES
	FIRE RESISTIVE NOTE 3	NON- FIRE RESISTIVE		
1 PHASE	5'-0"	10'-0"	10'-0"	20'-0"
3 PHASE	5'-0"	15'-0"	15'-0"	20'-0"

CLEARANCE TABLE



NOTES:

- CLEARANCE FROM BUILDING WALLS SHALL COMPLY WITH THE CLEARANCE TABLE. ALL DIMENSIONS SHOWN ARE MINIMUM DIMENSIONS.
- WHERE THERE ARE BUILDING EAVES OR OVERHANGS WITHIN 25'-0" ABOVE GROUND, CLEARANCE SHALL BE MEASURED HORIZONTALLY BEGINNING FROM THE EDGE OF THE EAVE OR OVERHANG.
- FIRE RESISTIVE BUILDING WALLS INCLUDE BRICK AND MASONRY STRUCTURES THAT HAVE A 2 HOUR FIRE RATING.
- CLEARANCE TO BUILDING DOORS, WINDOWS, VENTS AND FIRE ESCAPES TO BE MEASURED RADIALLY.
- LIQUID FLOW OF AREA SURROUNDING TRANSFORMER SHOULD BE AWAY FROM BUILDING. WHERE GROUND IS FLAT OR SLOPES TOWARD BUILDING, A DIKE SUFFICIENT TO CONTAIN ALL TRANSFORMER OIL FOR TRANSFORMERS 500 KVA AND LARGER SHALL BE PROVIDED.
- CLEARANCES ARE MEASURED FROM PAD EDGE TO BUILDING WALL, OPENING, OVERHANG OR FIRE ESCAPE UNLESS A CONTAINMENT DIKE IS UTILIZED. IF A CONTAINMENT DIKE IS UTILIZED, CLEARANCE IS MEASURED FROM DIKE.
- CLEARANCES FOR WINDOWS AND VENTS ABOVE TRANSFORMER ARE MEASURED RADIALLY FROM CLOSEST POINT ON TRANSFORMER.
- PADMOUNTED TRANSFORMERS SHALL BE POSITIONED SUCH THAT HOTSTICK USE IS NOT REQUIRED ON THE SIDE FACING THE BUILDING. IF HOTSTICK USE IS REQUIRED ON THE BUILDING SIDE, CLEARANCES SHOWN IN DETAIL SHEET 1 SHALL BE MAINTAINED.
- THERE SHOULD NOT BE ANY ABOVE GROUND OBSTRUCTIONS, SUCH AS SHRUBS, COOLING TOWERS, GAS METERS, FENCING, PEDESTALS ETC. WITHIN 5'-0" OF PAD OR OVERHANGS ABOVE PAD FACILITIES. REFERENCE DETAIL SHEET 1 FOR SCREENING CLEARANCES AROUND PADMOUNTED EQUIPMENT.
- THERE SHOULD NOT BE ANY PIPING OR CONDUIT UNDER THE PAD (EXCEPTION: MUTUALLY AGREED UPON COMMUNICATION CONDUITS) OTHER THAN THOSE ENTERING THE TRANSFORMER.
- TRANSFORMERS SHALL NOT OBSTRUCT FIRE LANE.
- IT IS THE OWNER'S RESPONSIBILITY TO COMPLY WITH ANY INSURANCE REGULATIONS AFFECTING THE PREMISES.

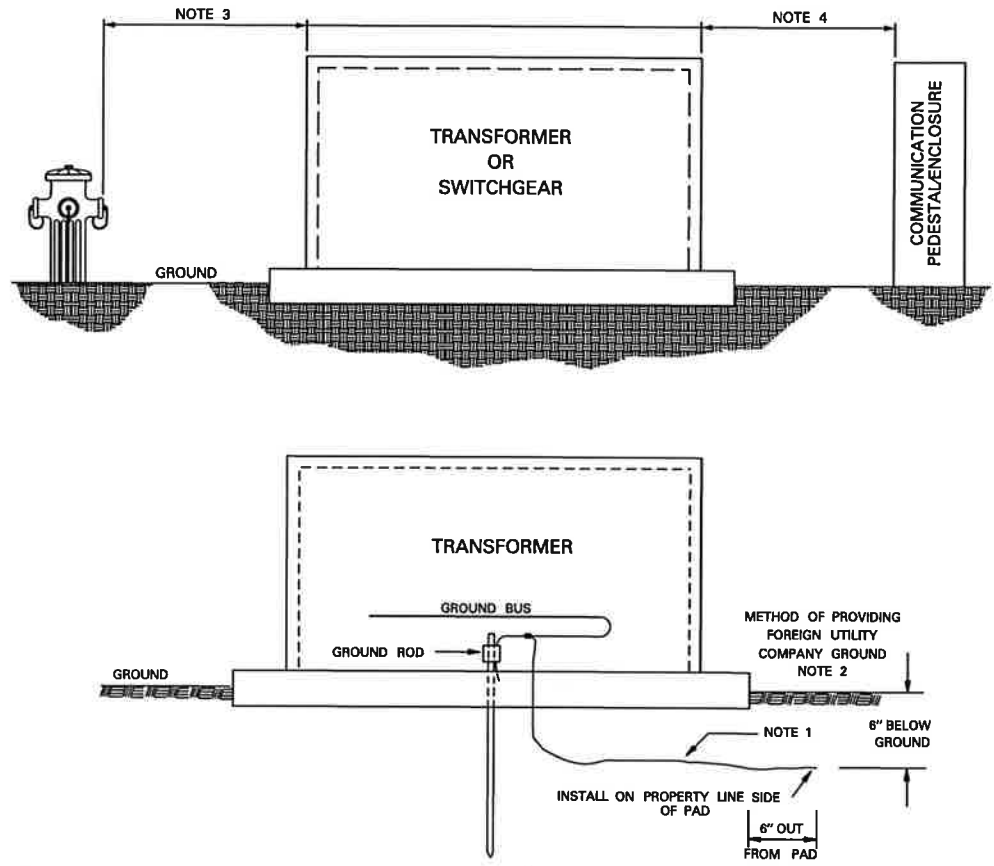
APPROVED BY ONCOR

CLEARANCES BETWEEN
PADMOUNTED EQUIPMENT
AND STRUCTURES

DCS-5 DETAIL SHEET 2 OF 19

COPYRIGHT 2013 ONCOR ELECTRIC DELIVERY COMPANY. ALL RIGHTS RESERVED.

04 - 13



NOTES:

- ON NEW INSTALLATIONS, INSTALL NO. 6 S.D. BARE COPPER AS SHOWN FOR FOREIGN UTILITY COMPANY BONDING.
- THE NATIONAL ELECTRICAL SAFETY CODE RULE 384C RECOMMENDS BONDING OF ALL ABOVE GROUND METALLIC POWER AND COMMUNICATIONS APPARATUS (PEDESTALS, TERMINALS, APPARATUS CASES, TRANSFORMER CASES, ETC.) THAT ARE SEPARATED BY A DISTANCE OF 6 FEET OR LESS.
- PADMOUNTED EQUIPMENT, PEDESTALS AND OTHER ABOVE GROUND ENCLOSURES SHOULD BE LOCATED NOT LESS THAN 4 FEET FROM FIRE HYDRANTS. WHERE CONDITIONS DO NOT PERMIT A CLEARANCE OF 4 FEET, A CLEARANCE OF NOT LESS THAN 3 FEET IS ALLOWED.
- ALL ABOVE GROUND METALLIC POWER AND COMMUNICATION EQUIPMENT (PEDESTALS, TRANSFORMER CASES, APPARATUS CASES, ETC.) THAT ARE SEPARATED BY A DISTANCE OF 6 FEET OR LESS SHALL BE BONDED.
- HORIZONTAL CLEARANCES FROM ALL ADJACENT SURFACE STRUCTURES WITH THE EXCEPTION OF FIRE HYDRANTS, SHALL HAVE A MINIMUM CLEARANCE OF 5 FOOT SEPERATION ON *NON-OPERATION SIDES AND 10 FOOT OF SEPERATION ON OPERATION SIDES.

APPROVED BY ONCOR

CLEARANCES BETWEEN
PADMOUNTED EQUIPMENT AND
FOREIGN UTILITY ENCLOSURES
AND EQUIPMENT

DCS-5 DETAIL SHEET 3 OF 19

COPYRIGHT 2013 ONCOR ELECTRIC DELIVERY COMPANY. ALL RIGHTS RESERVED.

04 - 13



Ch Moran P.E. 10-24-13
 Signature of Registrant Date

FIRM REGISTRATION NUMBER: 312

NO.	REVISION	BY	DATE
ADDISON TOWN OF ADDISON DALLAS COUNTY, TEXAS BELT LINE ROAD UNDERGROUND ELECTRICAL ONCOR DUCT BANK DETAIL 4E6			
HALFF <small>1201 NORTH BOWSER ROAD, RICHARDSON, TEXAS 75081-2275 TEL. (214) 348-6200 FAX (214) 739-0095</small>			
PROJECT	DESIGN	DRAWN	DATE
29350	HALFF	HALFF	OCT. 2013
FILE	SHEET		
29350 ELEC 19d	ELE-19		