

NOTES:

1. THE MAXIMUM DESIGN DEPTH FOR A MANHOLE IS 20 FEET TO THE FINISHED FLOOR. THIS INCLUDES 12 FEET OF NECK (FOR DEPTHS GREATER THAN THIS CONTACT AUTHORIZED ONCOR REPRESENTATIVE).
2. ALL JOINTS BETWEEN MANHOLE SECTIONS AND MANHOLE NECK SECTIONS SHALL BE PAINTED WITH RAM-NEK PRIMER OR APPROVED EQUAL BY MANHOLE SUPPLIER. ALL JOINTS ARE TO BE MADE WATERTIGHT AT THE TIME OF INITIAL INSTALLATION.
3. TO PREVENT WATER AND DEBRIS MIGRATION INTO THE MANHOLE, DO NOT REMOVE THE KNOCK OUT MEMBRANES FROM UNUSED TERMINATOR POSITIONS. ALSO, DUCT PLUGS SHOULD BE INSTALLED IN ALL CONDUITS THAT ARE UNOCCUPIED BY CABLE.
4. A MINIMUM OF THREE 5/8 IN. X 8 FT. COPPER CLAD GROUND RODS SHALL BE INSTALLED IN EACH MANHOLE.
5. PRECAST CONCRETE MANHOLES ARE TO BE INSTALLED ON A MINIMUM 18" GRAVEL BASE TO FACILITATE LEVELING.

APPROVED VENDORS FOR 3-WAY PRECAST CONCRETE MANHOLE (TSN 323108) W/COVER & FRAME.

- 1). OLD CASTLE PRECAST (PART NUMBER - 913 SERIES)
- 2). HANSON PIPE & PRECAST (PART NUMBER - HANSON-3WAY)
- 3). THE TURNER COMPANY (PART NUMBER - ELMH3WAY)

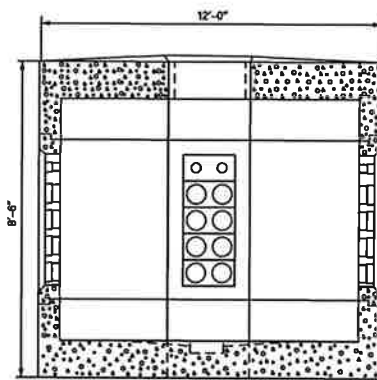
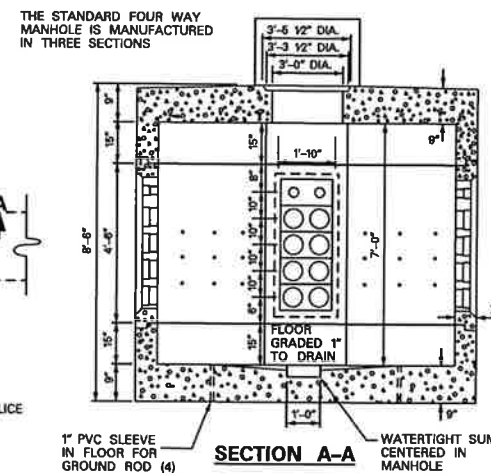
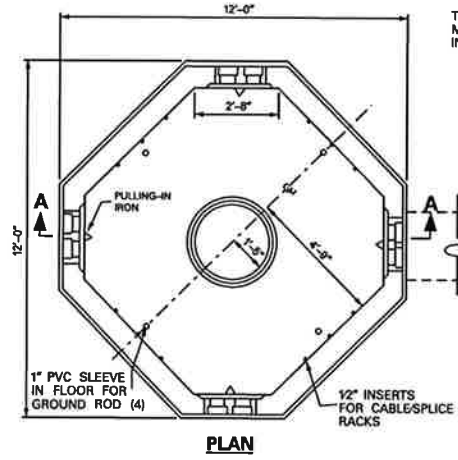
APPROVED BY ONCOR

PRECAST THREE WAY MANHOLE

DCS - 5 DETAIL SHEET 7 of 19

COPYRIGHT 2013 ONCOR ELECTRIC DELIVERY COMPANY ALL RIGHTS RESERVED

04 - 13



NOTES:

1. THE MAXIMUM DESIGN DEPTH FOR A MANHOLE IS 20 FEET TO THE FINISHED FLOOR. THIS INCLUDES 12 FEET OF NECK (FOR DEPTHS GREATER THAN THIS CONTACT AUTHORIZED ONCOR REPRESENTATIVE).
2. ALL JOINTS BETWEEN MANHOLE SECTIONS AND MANHOLE NECK SECTIONS SHALL BE PAINTED WITH RAM-NEK PRIMER OR APPROVED EQUAL BY MANHOLE SUPPLIER. ALL JOINTS ARE TO BE MADE WATERTIGHT AT THE TIME OF INITIAL INSTALLATION.
3. TO PREVENT WATER AND DEBRIS MIGRATION INTO THE MANHOLE, DO NOT REMOVE THE KNOCK OUT MEMBRANES FROM UNUSED TERMINATOR POSITION. ALSO, DUCT PLUGS SHOULD BE INSTALLED IN ALL CONDUITS THAT ARE UNOCCUPIED BY CABLE.
4. A MINIMUM OF FOUR 5/8 IN. X 8 FT. COPPER CLAD GROUND RODS SHALL BE INSTALLED IN EACH FOUR WAY MANHOLE.
5. PRECAST CONCRETE MANHOLES ARE TO BE INSTALLED ON A MINIMUM 18" GRAVEL BASE TO FACILITATE LEVELING.

APPROVED VENDORS FOR 4-WAY PRECAST CONCRETE MANHOLE (TSN 316942) W/COVER & FRAME.

- 1). OLD CASTLE PRECAST (PART NUMBER - 914 SERIES)
- 2). HANSON PIPE & PRECAST (PART NUMBER - HANSON-4WAY)
- 3). THE TURNER COMPANY (PART NUMBER - ELMH4WAY)

APPROVED BY ONCOR

PRECAST FOUR WAY MANHOLE

DCS - 5 DETAIL SHEET 8 of 19

COPYRIGHT 2013 ONCOR ELECTRIC DELIVERY COMPANY ALL RIGHTS RESERVED

04 - 13



Ch Moran P.E. 10-24-13
 Signature of Registrant Date

FIRM REGISTRATION NUMBER: 312

NO.	REVISION	BY	DATE

Addison! TOWN OF ADDISON
 DALLAS COUNTY, TEXAS
 BELT LINE ROAD
 UNDERGROUND ELECTRICAL

ONCOR DUCT BANK DETAIL 4E6

HALFF 1201 NORTH BOWSER ROAD, RICHARDSON, TEXAS 75081-2275
 TEL (214) 348-6200 FAX (214) 739-0095

PROJECT	DESIGN	DRAWN	DATE	FILE	SHEET
29350	HALFF	HALFF	OCT, 2013	29350 ELEC 20d	ELE-20