

DESCRIPTION & APPROVED VENDORS	ONCOR TSN	VENDOR PART#
12 IN. X 36 IN. PRECAST CONCRETE NECK SECTION.	320774	
OLD CASTLE PRECAST		048080
HANSON PIPE & PRECAST		HANSON-12NECK36
THE TURNER COMPANY		ELGR3612
18 IN. X 36 IN. PRECAST CONCRETE NECK SECTION.	320775	
OLD CASTLE PRECAST		048080
HANSON PIPE & PRECAST		HANSON-18NECK36
THE TURNER COMPANY		ELGR3618
24 IN. X 36 IN. PRECAST CONCRETE NECK SECTION.	320776	
OLD CASTLE PRECAST		048090
HANSON PIPE & PRECAST		HANSON-24NECK36
THE TURNER COMPANY		ELGR3624
36 IN. X 36 IN. PRECAST CONCRETE NECK SECTION.	320777	
OLD CASTLE PRECAST		048110
HANSON PIPE & PRECAST		HANSON-36NECK36
THE TURNER COMPANY		ELGR3636
MANHOLE STEP PLASTIC STEEL REINFORCED, DRIVE IN SINGLE RUNG	482911	
M.A. INDUSTRIES		PS-3-PCF004-616

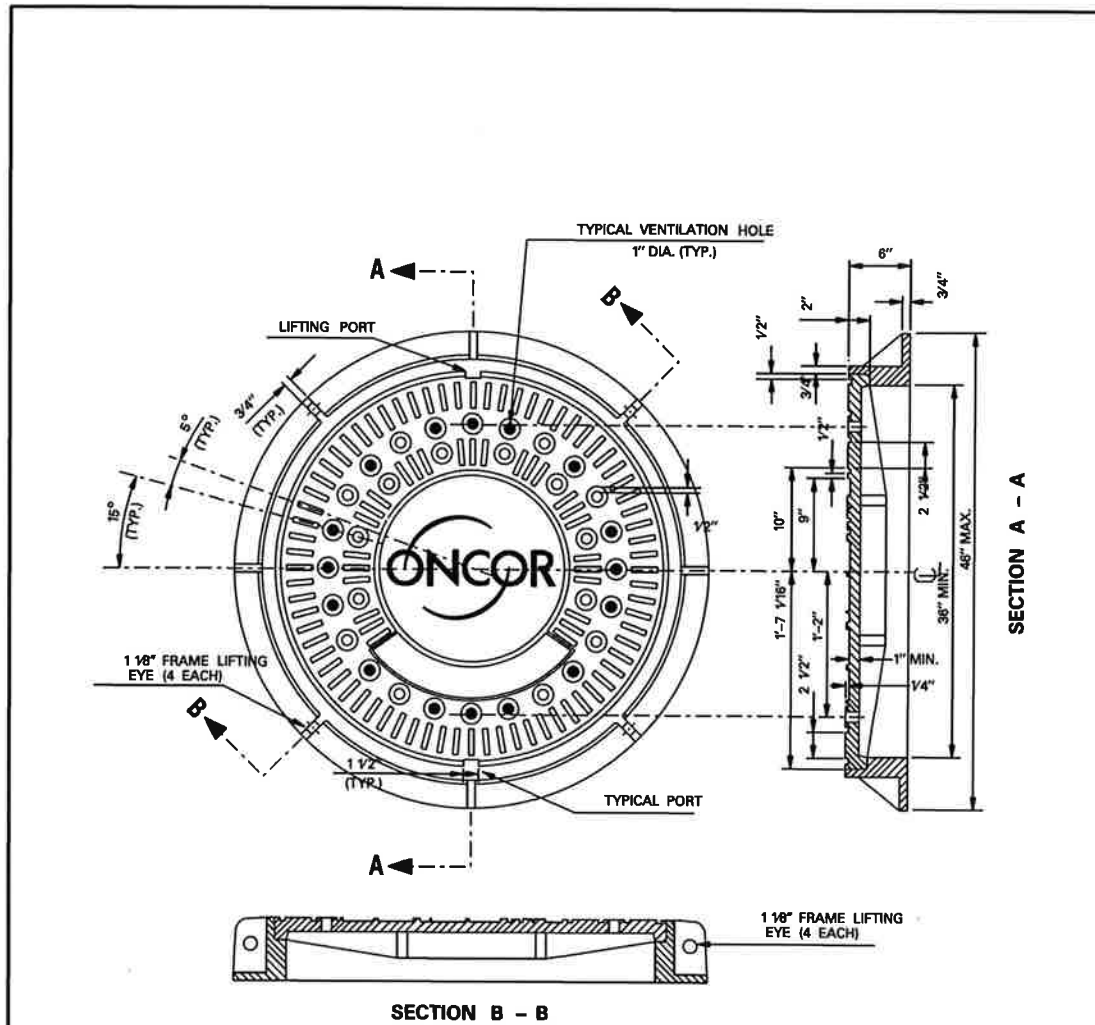
APPROVED BY ONCOR

MANHOLE NECK, LADDER, AND ENTRANCE PAD

DCS - 5 DETAIL SHEET 9 of 19

COPYRIGHT 2013 ONCOR ELECTRIC DELIVERY COMPANY ALL RIGHTS RESERVED

04 - 13



APPROVED VENDORS FOR (TSN 327563) MANHOLE COVER AND FRAME.

- 1. OLD CASTLE PRECAST (PART NUMBER - MHR12010)
- 2. THE TURNER COMPANY (PART NUMBER - ELCVR36)

APPROVED BY ONCOR

MANHOLE COVER AND FRAME

DCS - 5 DETAIL SHEET 10 of 19

COPYRIGHT 2013 ONCOR ELECTRIC DELIVERY COMPANY ALL RIGHTS RESERVED

04 - 13



Signature of Registrant: *Ch Morala*, Date: 11-8-2013

FIRM REGISTRATION NUMBER: 312

NO.	REVISION	BY	DATE
TOWN OF ADDISON DALLAS COUNTY, TEXAS BELT LINE ROAD UNDERGROUND ELECTRICAL ONCOR DUCT BANK DETAIL 4E6			
1201 NORTH BOWSER ROAD, RICHARDSON, TEXAS 75081-2275 TEL (214) 348-8200 FAX (214) 739-0095			
PROJECT	DESIGN	DRAWN	DATE
29350	HALFF	HALFF	NOV. 2013
FILE	SHEET		
29350 ELEC 21d	ELE-21		