

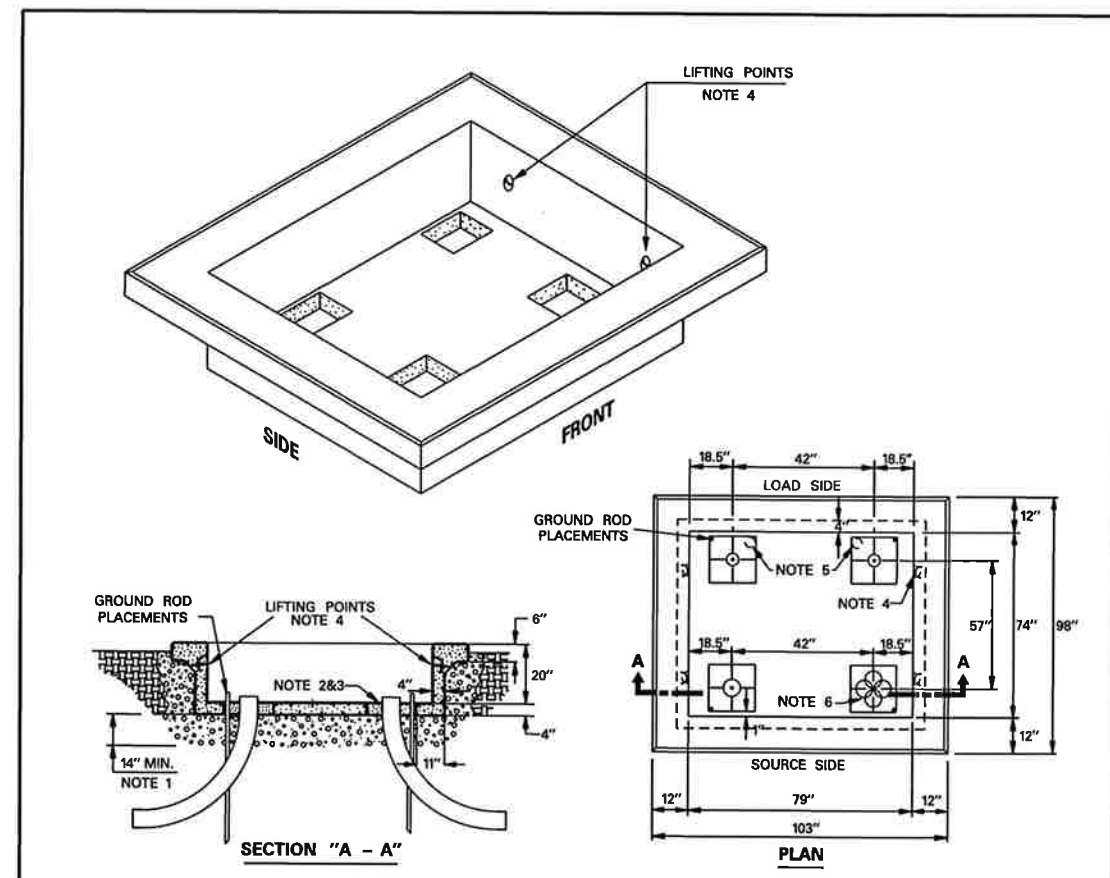
25KV	A	B	C	D	E	F	G	H
PMH - 9	15"	11"	22"	22"	11"	8"	15"	37"
PMH - 10	18"	13"	20"	20"	13"	11"	18"	34"
PMH - 11	15"	11"	22"	20"	13"	8"	18"	37"

- NOTES:**
- PIERS ARE REQUIRED ON ALL SWITCHGEAR PADS UNLESS WAIVED BY THE COMPANY INSPECTOR.
 - USE WIRE MESH FOR CONCRETE REINFORCEMENT AROUND DEEPWELL BOX.
 - ENDS OF RE-BAR SHALL REMAIN A MINIMUM OF 2" INSIDE OF CONCRETE AND SHALL BE INTERMEDIATE GRADE 60 AND CONFORM TO ASTM A615.
 - CONTACT COMPANY REPRESENTATIVE ON WHERE TO ACQUIRE 5/8" X 10" COPPER CLAD GROUND RODS. GROUND RODS TO BE OBTAINED AND INSTALLED BY CONTRACTOR. INSTALLATION DEPTH SHALL BE 7' - 6".
 - FOR CLEARANCES ON ALL SIDES OF THE SWITCHGEAR SEE DETAIL SHEETS 1, 2, 3 AND 4.
 - FOR PADS PLUMBED INTO DUCT BANKS, INSTALL 3" COMMUNICATION CONDUIT FROM MANHOLE TO FRONT RIGHT CORNER OF LOAD SIDE CONDUIT OPENING OF PAD.
 - GROUT CONDUIT WINDOW OPENINGS.

APPROVED BY ONCOR

POURED IN PLACE PAD FOR 25KV SUPERVISORY CONTROL LIVE FRONT SWITCHGEAR

DCS-5 DETAIL SHEET 13 OF 19



- NOTES:**
- TO PREVENT SETTLING AND IMPROVE PAD STABILIZATION ADD A MINIMUM OF 14 INCHES MEDIUM SIZE GRAVEL BOTTOM & SIDES.
 - CONDUIT SHALL NOT EXTEND MORE THAN 2 INCHES ABOVE CONDUIT WINDOW OPENING.
 - TO ALLOW FOR ADEQUATE DRAINAGE DO NOT SEAL CONDUIT WINDOW OPENINGS WITH GROUT. FILL WITH AGGREGATE ONLY.
 - LIFTING POINTS (4) RATED AT 2000 LBS EACH TOTAL PAD WEIGHT IS 6100 LBS.
 - FOR PADS PLUMBED TO CONCRETE ENCASED DUCT, INSTALL 3 INCH COMMUNICATION CONDUIT FROM MANHOLE TO A LOAD SIDE OPENING.
 - EXAMPLE OF CONDUIT PLACEMENTS (VERTICAL OR HORIZONTAL) WHEN SPARE CONDUITS ARE REQUIRED.

DESCRIPTION & APPROVED VENDORS	ONCOR TSN	VENDOR PART#
PAD, PRECAST, 20" DEEPWELL, SWITCHGEAR, 25KV PMHPME TYPE, 103" X 98"	329429	
OLD CASTLE PRECAST		1804702
THE TURNER COMPANY		ELPAD25KV
ROD, GRD, CU CLAD STL, 5/8" X 10', UL LABEL & DIMEN STAMPED ON TOP	306212	
ERITECH		616800

APPROVED BY ONCOR

PRECAST WELLED PAD FOR DEAD FRONT SWITCHGEAR

DCS - 5 DETAIL SHEET 14 OF 19



Ch Morlan P.E. 10-24-13
 Signature of Registrant Date
 FIRM REGISTRATION NUMBER: 312

NO.	REVISION	BY	DATE
ADDISON TOWN OF ADDISON DALLAS COUNTY, TEXAS			
BELT LINE ROAD UNDERGROUND ELECTRICAL			
ONCOR DUCT BANK DETAIL 4E6			
HALFF			
1201 NORTH BOWSER ROAD, RICHARDSON, TEXAS 75081-2275 TEL (214) 346-6200 FAX (214) 739-0095			
PROJECT	DESIGN	DRAWN	DATE
29350	HALFF	HALFF	OCT. 2013
FILE	SHEET		
29350 ELEC 23d	ELE-23		