

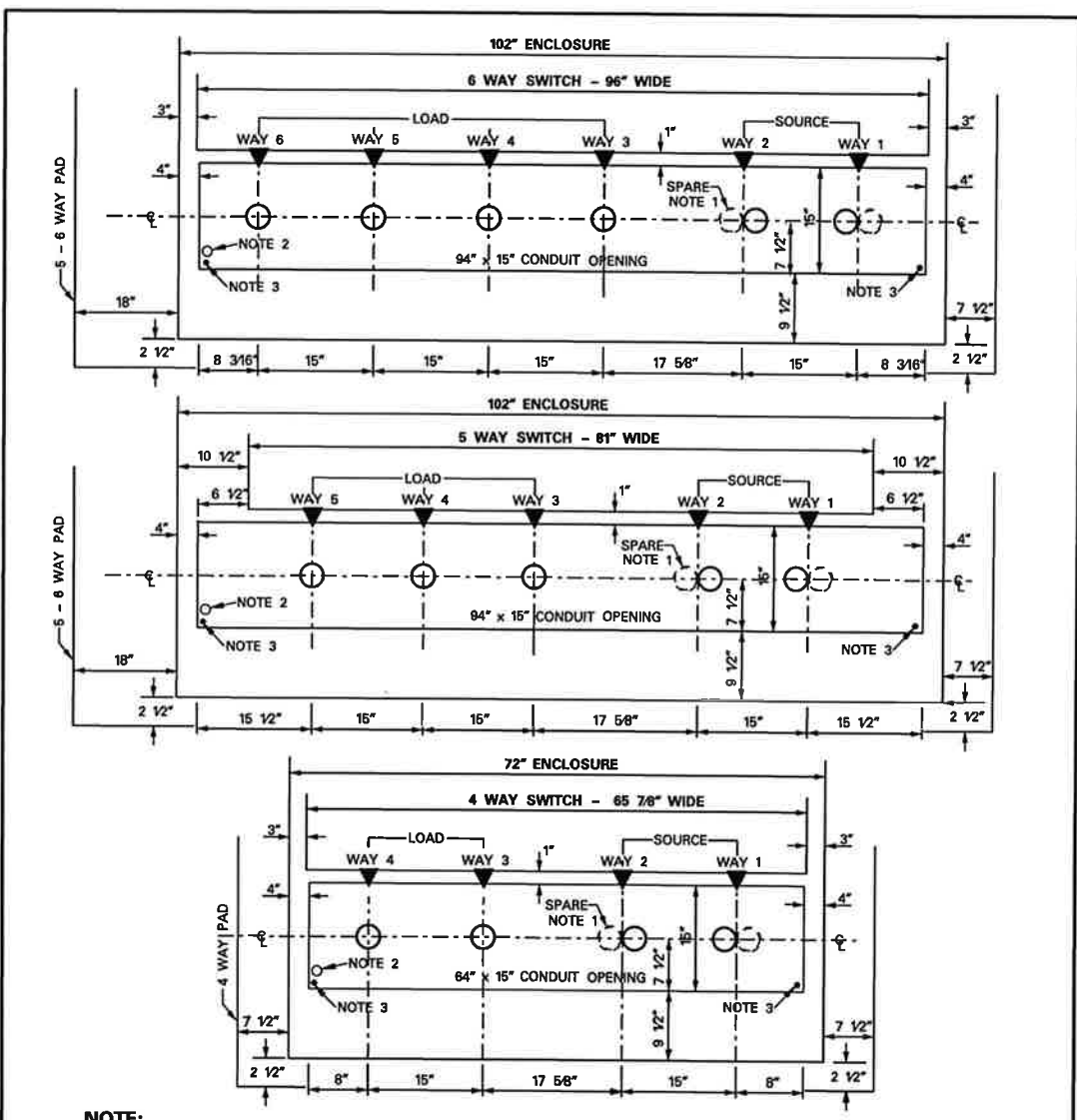
- NOTES:**
- FOR STABILIZATION AND DRAINAGE INSTALL SMALL TO MEDIUM GRAVEL UNDER PAD DEEP WELL.
  - FOR CLEARANCES ON ALL SIDES OF THE SWITCHGEAR SEE DETAIL SHEETS 1, 2, 3 AND 4.
  - PIERS ARE REQUIRED ON ALL SWITCHGEAR PADS UNLESS WAIVED BY THE COMPANY INSPECTOR.
  - LIFT PAD WITH PROVIDED LIFTING POINTS ONLY. SEE LIFTING RINGS INSIDE WALL OF DEEP WELL.
  - CONDUIT NOT TO EXTEND MORE THAN 3" ABOVE BOTTOM OF DEEP WELL.
  - MINIMUM TRENCH DEPTH AT PAD TO TOP OF CONDUIT FOR THE FOLLOWING CONDUITS:  
 6" CONDUIT — 61"  
 4" CONDUIT — 47"  
 2" CONDUIT — 40"
  - REFER TO DETAIL SHEET 16 FOR CONDUIT LOCATIONS.
  - ADDITIONAL AREA FOR CONTROL CABINET WHEN MOUNTING REMOTE SUPERVISORY CONTROLLED SWITCHGEAR.
  - CONTACT COMPANY REPRESENTATIVE ON WHERE TO ACQUIRE 5/8" X 10" COPPER CLAD GROUND RODS.
  - GROUND RODS TO BE OBTAINED AND INSTALLED BY CONTRACTOR. INSTALLATION DEPTH SHALL BE 7' - 8".
  - CONTACT COMPANY REPRESENTATIVE ON WHERE TO ACQUIRE PRECAST CONCRETE PAD.

**APPROVED BY ONCOR**

**PRECAST WELLED PAD FOR SF6 DEAD FRONT SWITCHGEAR**

DCS-5 DETAIL SHEET 15 OF 19

04 - 13



- NOTE:**
- CONDUIT SHALL BE CENTERED ON CENTER BUSHING OF EACH SWITCHED WAY. IF SPARE CONDUIT IS REQUIRED, BOTH SHALL BE CENTERED AS SHOWN ON CENTER BUSHING OF SWITCHED WAY.
  - FOR PADS PLUMBED INTO DUCT BANKS, INSTALL 3" COMMUNICATION CONDUIT FROM MANHOLE TO FRONT LEFT CORNER OF THE CONDUIT OPENING OF PAD.
  - INSTALL 5/8" X 10" COPPER CLAD GROUND RODS IN FRONT CORNERS OF WINDOW.

**APPROVED BY ONCOR**

**CONDUIT LOCATIONS FOR SF6 DEAD FRONT SWITCHGEAR**

DCS-5 DETAIL SHEET 16 OF 19

04 - 13



*Ch Moran* P.E. 10-24-13  
 Signature of Registrant Date  
 FIRM REGISTRATION NUMBER: 312

NO.	REVISION	BY	DATE
<b>ADDISON</b> TOWN OF ADDISON DALLAS COUNTY, TEXAS BELT LINE ROAD UNDERGROUND ELECTRICAL ONCOR DUCT BANK DETAIL 4E6			
<b>HALFF</b> 1201 NORTH BOWSER ROAD, RICHARDSON, TEXAS 75081-2275 TEL. (214) 346-0200 FAX (214) 739-0095			
PROJECT	DESIGN	DRAWN	DATE
29350	HALFF	HALFF	OCT. 2013
FILE	SHEET		
29350 ELEC 24d	ELE-24		