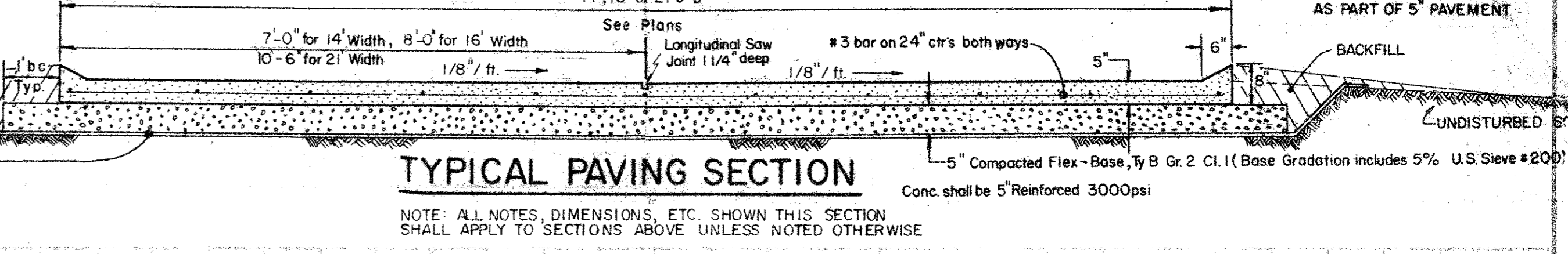
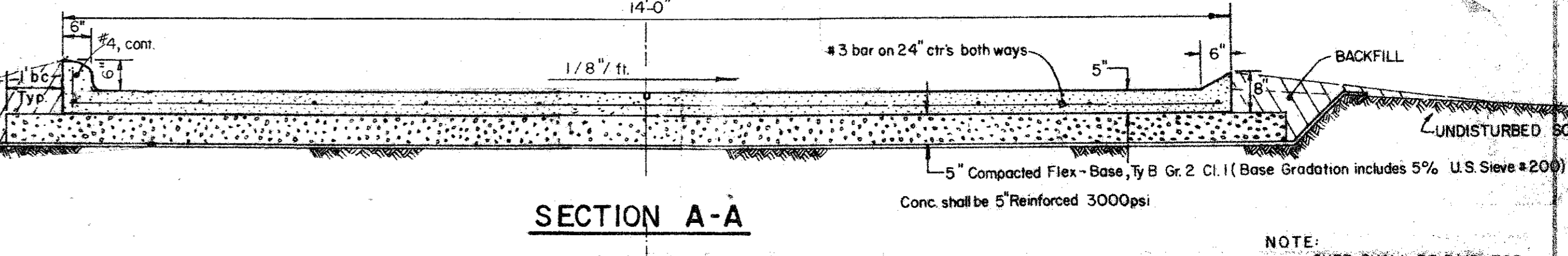
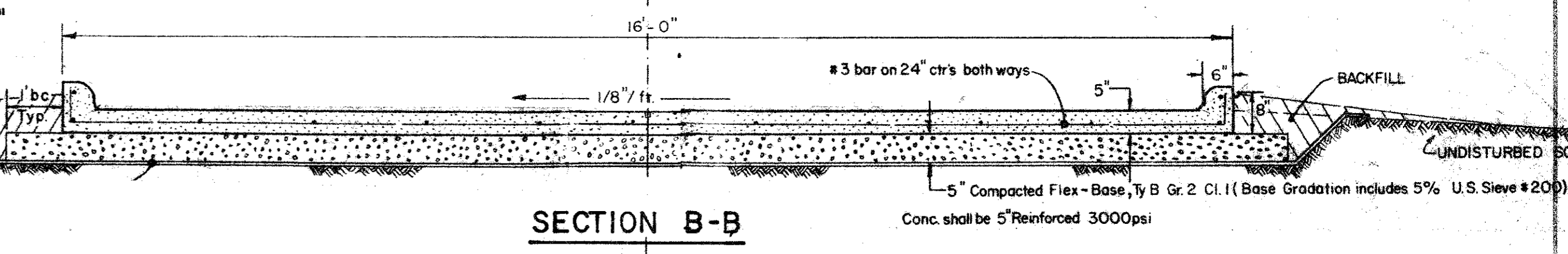
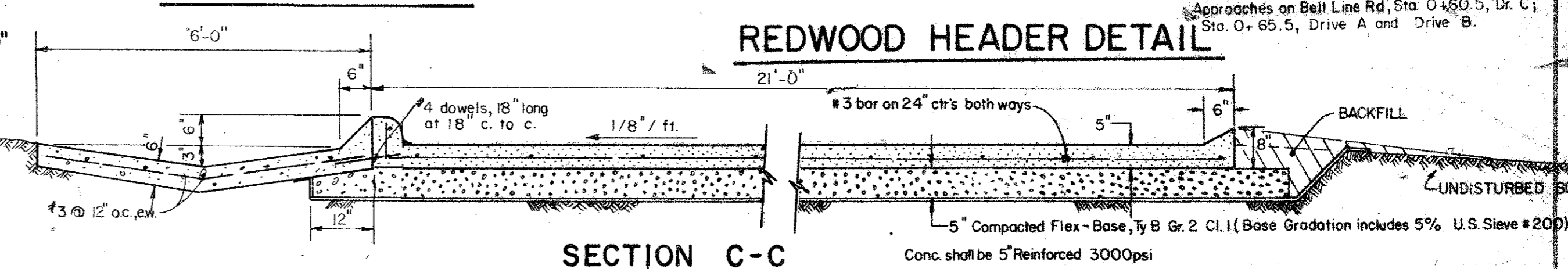


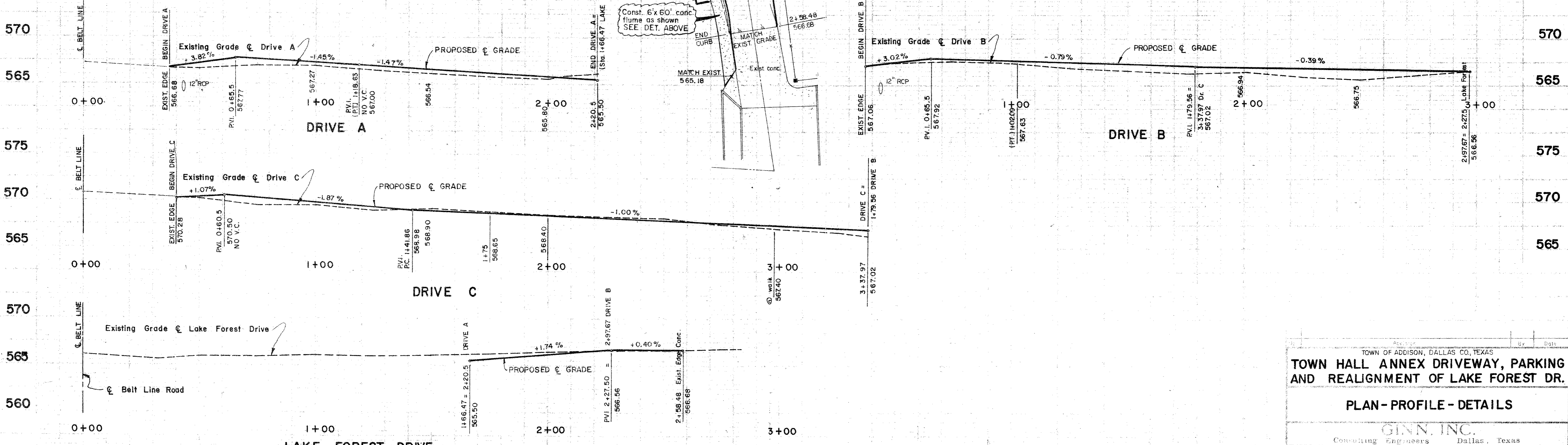
CURVE DATA

C-1	$\Delta = 49^\circ 02' 50''$
	$R = 42.74'$
	$T = 19.50'$
	$L = 36.59'$
C-2	$\Delta = 57^\circ 02'$
	$R = 53.37'$
	$T = 29.0'$
	$L = 53.13'$
C-3	$\Delta = 98^\circ 50' 39''$
	$R = 50.0'$
	$T = 58.38'$
	$L = 86.26'$
C-4	$\Delta = 48^\circ 53' 45''$
	$R = 60.0'$
	$T = 27.28'$
	$L = 51.20'$



TYPICAL PAVING SECTION

NOTE: ALL NOTES, DIMENSIONS, ETC. SHOWN THIS SECTION SHALL APPLY TO SECTIONS ABOVE UNLESS NOTED OTHERWISE



TOWN OF ADDISON, DALLAS CO, TEXAS

TOWN HALL ANNEX DRIVEWAY, PARKING AND REALIGNMENT OF LAKE FOREST DR.

PLAN - PROFILE - DETAILS

GINN, INC.
Consulting Engineers Dallas, Texas

Designed: HBJ Drawn: GF Date: OCT. 1982 Job No.: 228
 Approved: HWG Checked: HBJ Scale: H=1"=20' V=1"=50' Sheet: 2 of 2