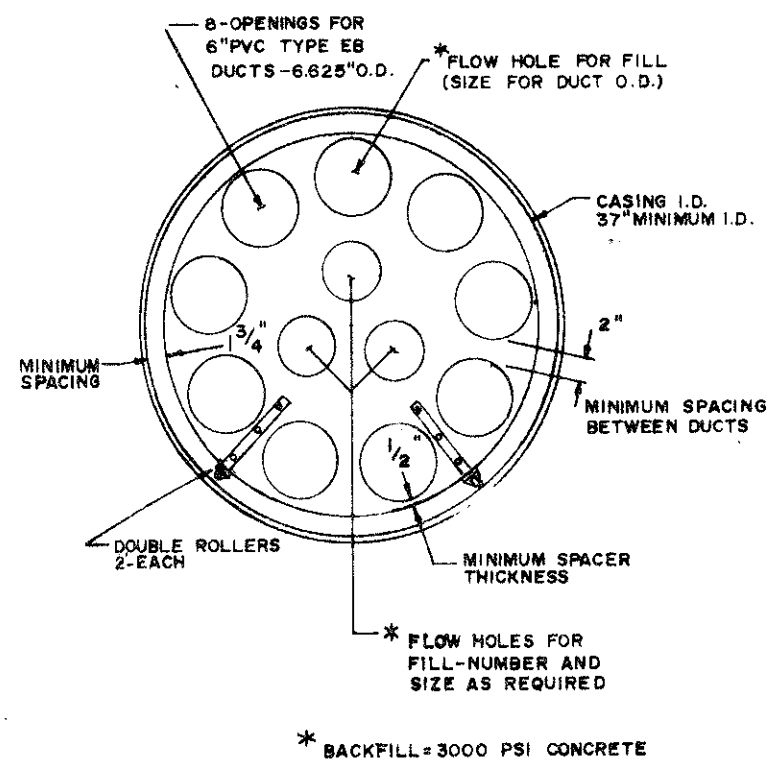
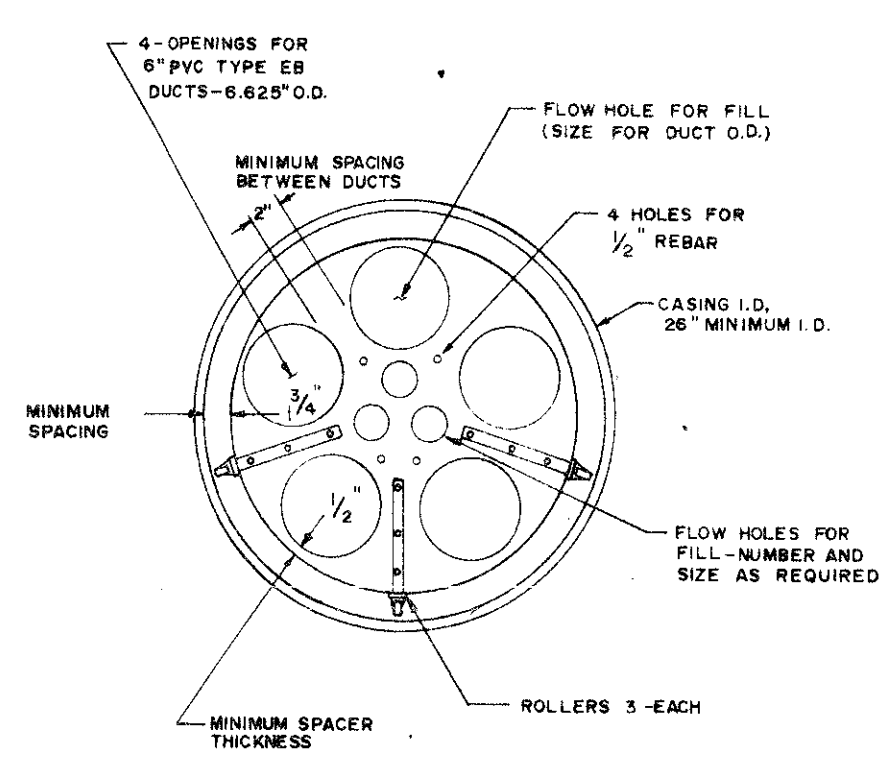


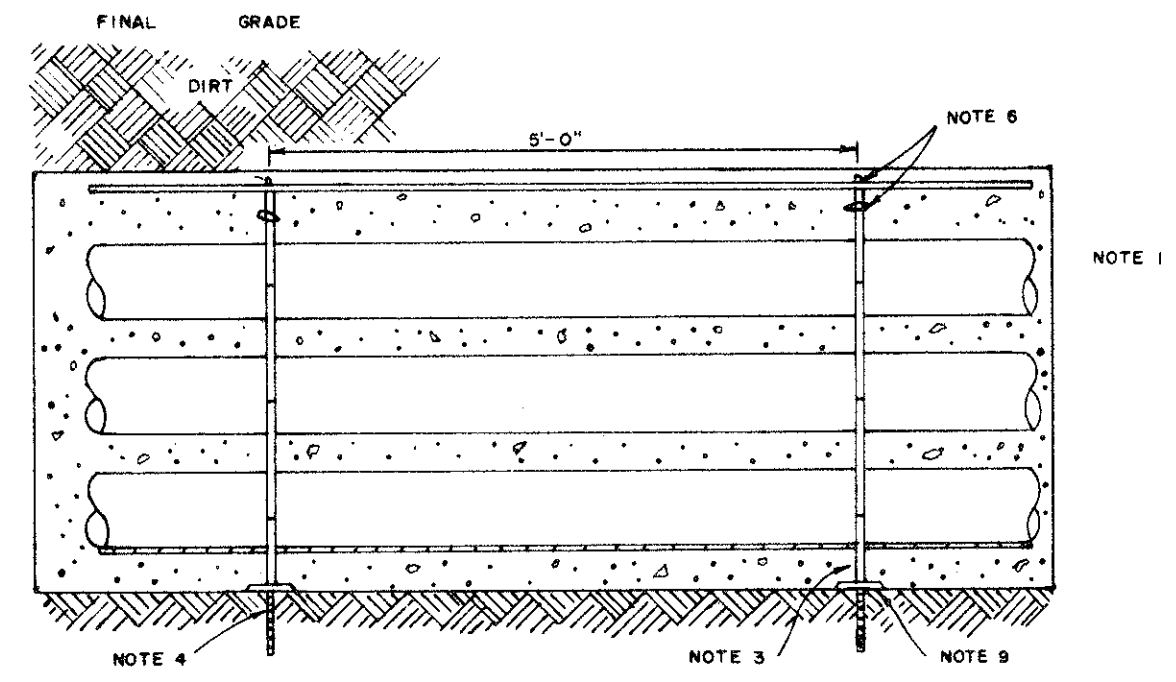
**BORE SPACER FOR 10-6" PVC DUCTS**



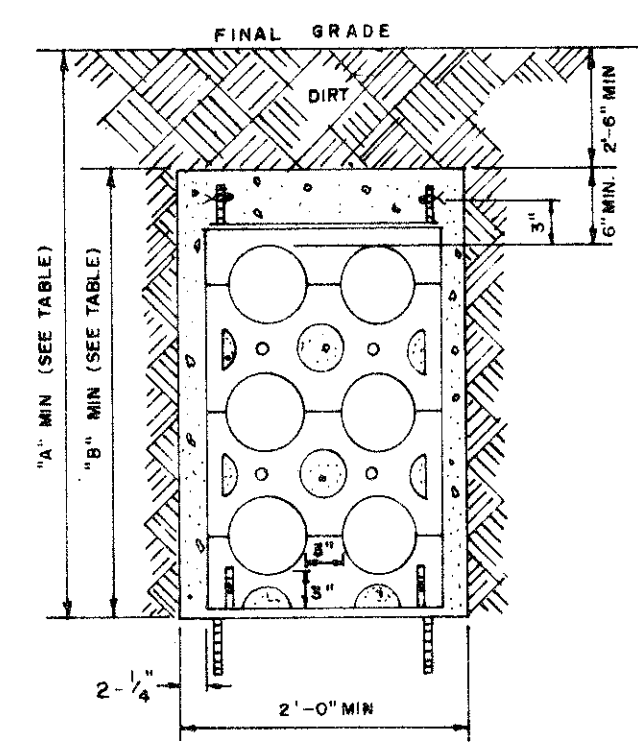
**BORE SPACER FOR 8-6" PVC DUCTS**



**BORE SPACER FOR 4-6" PVC DUCTS**



**SECTION OF TRENCH**



**END VIEW OF TRENCH**

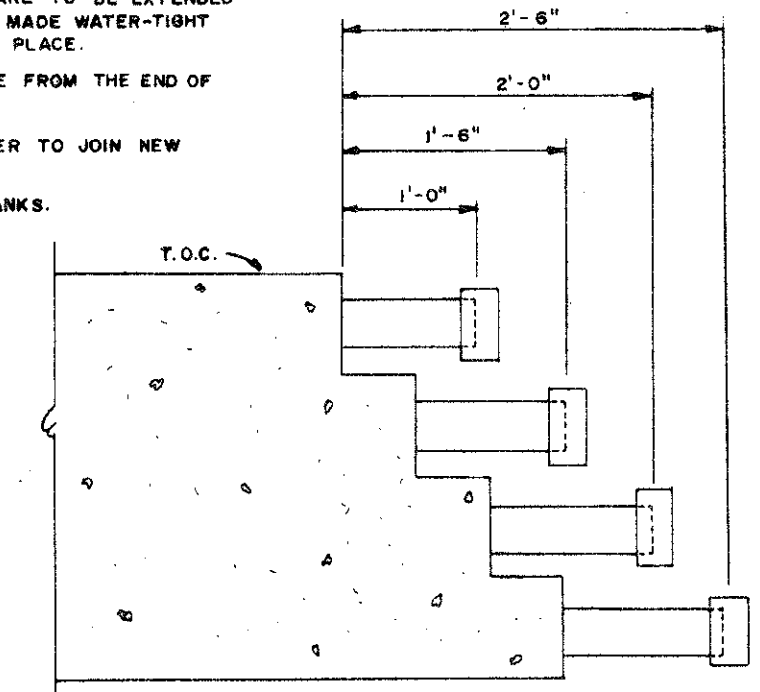
**NOTES**

1. CONDUIT TO BE 6" PVC TYPE EB OR SCHEDULE 40 WITH O.D. OF 6.625"
2. CONCRETE ENCASMENT-ALL CONCRETE TO HAVE A MIN. COMPRESSIVE STRENGTH OF 3000 PSI AT TWENTY-EIGHT (28) DAYS.
3. INSTALL SPACER EVERY 5 FEET. ALL SPACERS TO PROVIDE 3" VERTICAL AND HORIZONTAL SEPARATION BETWEEN CONDUITS.
4. INSTALL #4 STEEL REINFORCING RODS THROUGH THE INTERNAL VERTICAL CHANNELS AT BOTH OUTER EDGES OF SPACERS AND DRIVE REINFORCING RODS INTO EARTH TO ANCHOR ASSEMBLY.
5. INSTALL #4 STEEL REINFORCING RODS ACROSS TOP OF CAP AND IN EACH CORNER OF THE ENCASMENT.
6. TIE HORIZONTAL AND VERTICAL RODS TOGETHER WITH #16 STEEL TIE WIRE.
7. CONDUIT RUN BETWEEN MANHOLES TO BE INSTALLED WITH A MINIMUM SLOPE OF 4" PER 100 FEET AND A MAXIMUM SLOPE OF 10 FT. PER 100 FEET TO DRAIN THROUGHOUT ITS ENTIRE LENGTH INTO MANHOLES.
8. INSTALL 6" GALV. CONDUIT BENDS AND ADAPTERS ON ANGLES GREATER THAN 15°.
9. BASE PADS FOR SPACERS ARE REQUIRED IN SANDY OR LOOSE SOIL.

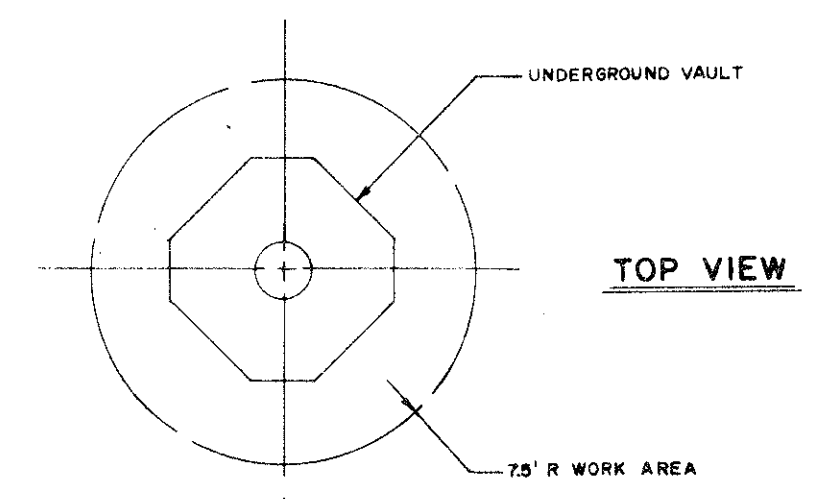
DIMENSION	2E6	4E6	6E6	8E6	10E6
A (MIN)	3'-10"	4'-8"	5'-6"	6'-4"	7'-2"
B (MIN)	1'-4"	2'-2"	3'-0"	3'-10"	4'-8"

**INCOMPLETE DUCT LINE**

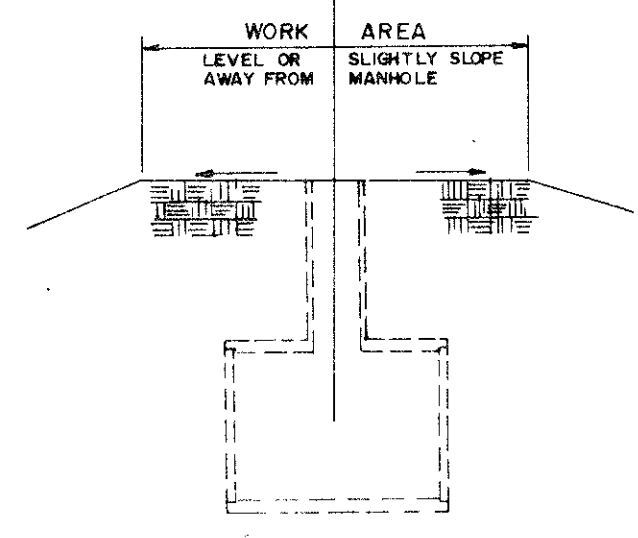
1. ON ALL INCOMPLETE DUCT LINES, (DUCTS THAT ARE TO BE EXTENDED AT A FUTURE TIME) THE CONDUITS ARE TO BE MADE WATER-TIGHT WITH A CONDUIT CAP SOLVENT CEMENTED INTO PLACE.
2. NO EXPOSED REINFORCING STEEL IS TO PROTRUDE FROM THE END OF AN UNFINISHED DUCT.
3. DOWELLING IS THE METHOD TO BE USED IN ORDER TO JOIN NEW DUCT TO EXISTING UNFINISHED DUCT.
4. SPACING IS TYPICAL FOR 8E6 AND 4E6 DUCT BANKS.
5. 3'-6" MINIMUM COVER TO T.O.C.



**8E6 INCOMPLETE DUCT**

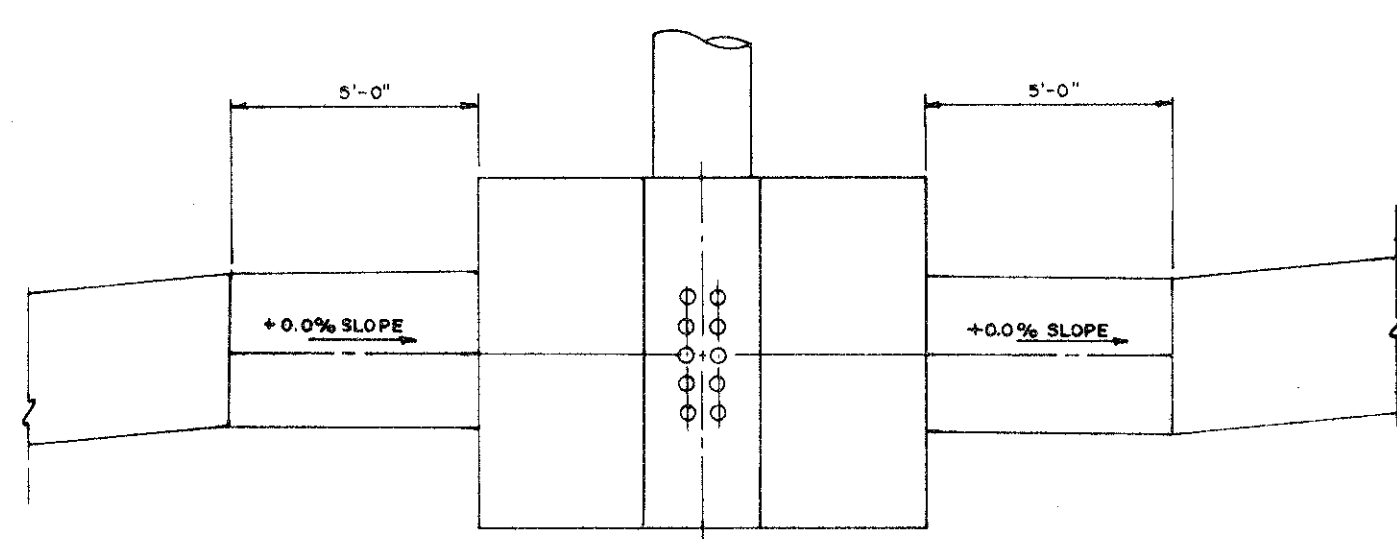


**TOP VIEW**



**SIDE VIEW**

**TYPICAL MANHOLE WORK AREA**



**MAXIMUM ALLOWABLE SLOPE INTO MANHOLE IS 0.0%  
MANHOLE APPROACH PROFILE DETAIL**

REVISION  
 DATE  
 BY  
 CH.  
 APP.