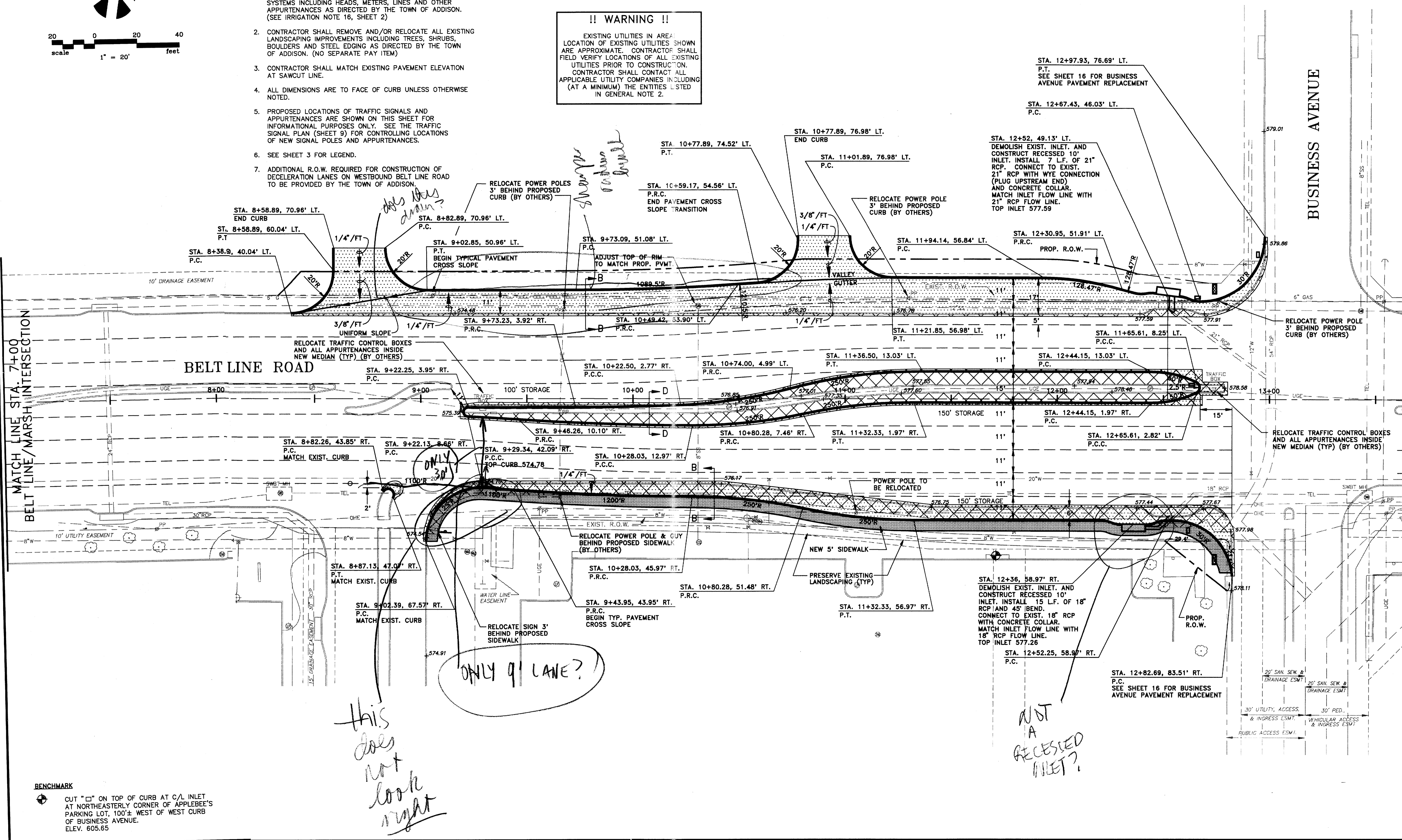


NOTES

1. CONTRACTOR SHALL DETERMINE THE LOCATION OF, AND REMOVE AND/OR RELOCATE, ALL AFFECTED SPRINKLER SYSTEMS INCLUDING HEADS, METERS, LINES AND OTHER APPURTENANCES AS DIRECTED BY THE TOWN OF ADDISON. (SEE IRRIGATION NOTE 16, SHEET 2)
2. CONTRACTOR SHALL REMOVE AND/OR RELOCATE ALL EXISTING LANDSCAPING IMPROVEMENTS INCLUDING TREES, SHRUBS, BOULDERS AND STEEL EDGING AS DIRECTED BY THE TOWN OF ADDISON. (NO SEPARATE PAY ITEM)
3. CONTRACTOR SHALL MATCH EXISTING PAVEMENT ELEVATION AT SAWCUT LINE.
4. ALL DIMENSIONS ARE TO FACE OF CURB UNLESS OTHERWISE NOTED.
5. PROPOSED LOCATIONS OF TRAFFIC SIGNALS AND APPURTENANCES ARE SHOWN ON THIS SHEET FOR INFORMATIONAL PURPOSES ONLY. SEE THE TRAFFIC SIGNAL PLAN (SHEET 9) FOR CONTROLLING LOCATIONS OF NEW SIGNAL POLES AND APPURTENANCES.
6. SEE SHEET 3 FOR LEGEND.
7. ADDITIONAL R.O.W. REQUIRED FOR CONSTRUCTION OF DECELERATION LANES ON WESTBOUND BELT LINE ROAD TO BE PROVIDED BY THE TOWN OF ADDISON.

!! WARNING !!

EXISTING UTILITIES IN AREA LOCATION OF EXISTING UTILITIES SHOWN ARE APPROXIMATE. CONTRACTOR SHALL FIELD VERIFY LOCATIONS OF ALL EXISTING UTILITIES PRIOR TO CONSTRUCTION. CONTRACTOR SHALL CONTACT ALL APPLICABLE UTILITY COMPANIES INCLUDING (AT A MINIMUM) THE ENTITIES LISTED IN GENERAL NOTE 2.



Handwritten note: this does not look right

Handwritten note in a circle: ONLY 9 LANE?

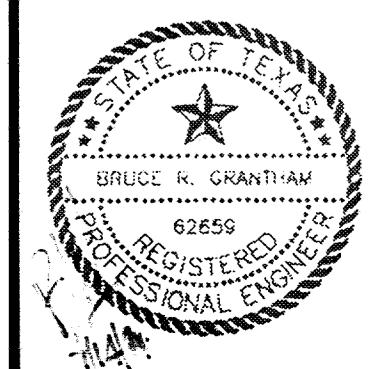
Handwritten note: NOT A RECESSED INLET?

BENCHMARK

CUT "□" ON TOP OF CURB AT C/L INLET AT NORTHEASTERLY CORNER OF APPLEBEE'S PARKING LOT, 100± WEST OF WEST CURB OF BUSINESS AVENUE. ELEV. 605.65

NO.	REVISION	BY	DATE
1	ADD TWO DECELERATION LANES; REVISED INLET; ADDED CURB POC	B.G.	4/5/94
2	REVISE DECELERATION LANES	B.G.	4/14/94
3	REVISE DRIVEWAY LOCATIONS	B.G.	7/14/94

DESIGNED BY: B. GRANTHAM
 DRAWN BY: EH&A
 CHECKED BY: B. GRANTHAM
 SCALE: 1" = 20'
 DATE: JANUARY 1994
 FILE: \ADDISON\BUSINESS\BUS1



EH&A Espey, Huston & Associates, Inc.
 Engineering & Environmental Consultants
 13800 Montfort Drive, Suite 230
 Dallas, Texas 75240 (214) 387-0771

PAVING PLAN

INTERSECTION IMPROVEMENTS
 BELT LINE ROAD AT BUSINESS AVENUE
 for
 THE TOWN OF ADDISON

SHEET NO. 15
 OF 46 SHEETS
 JOB NO. 15411