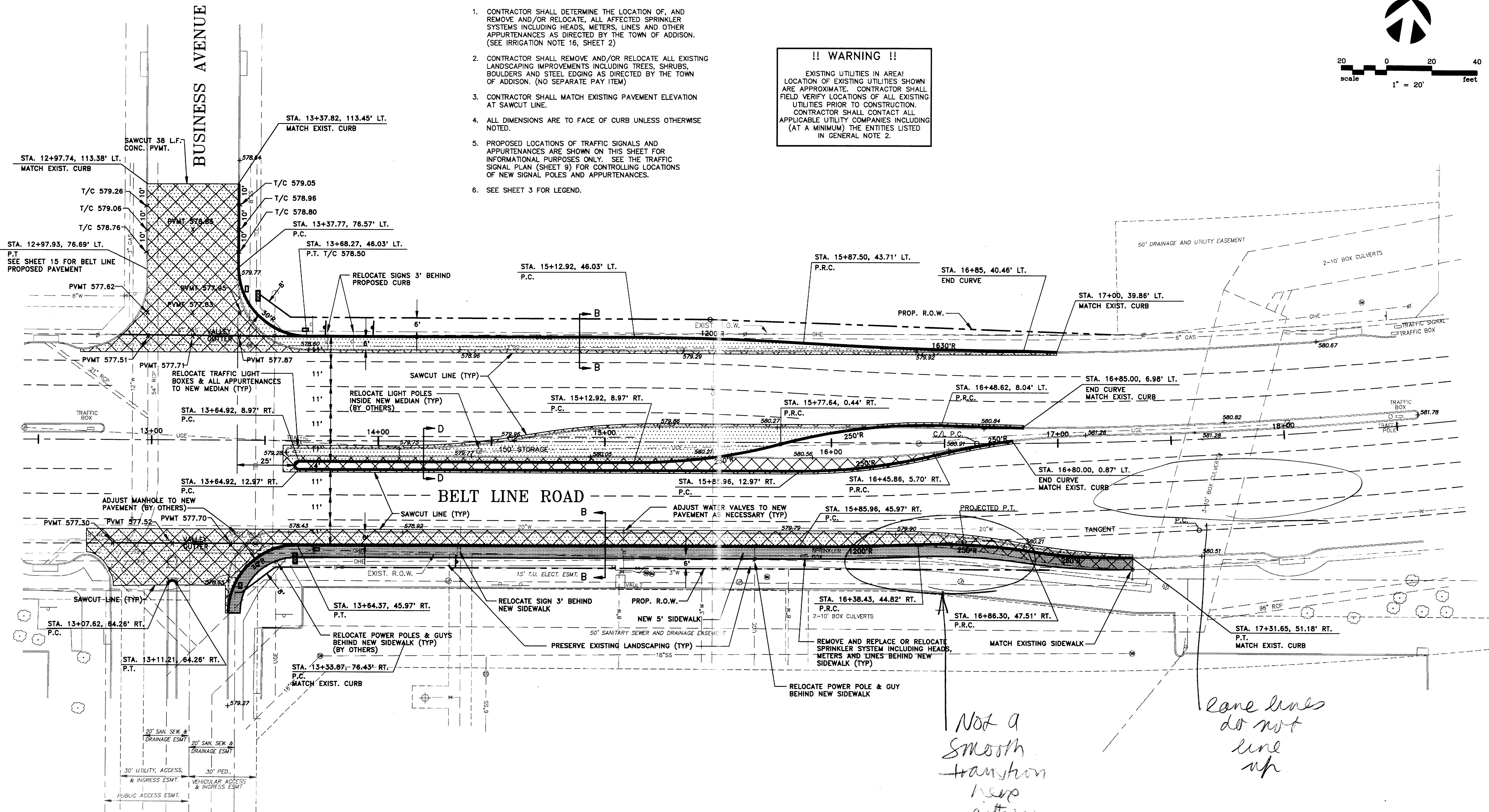


**NOTES**

1. CONTRACTOR SHALL DETERMINE THE LOCATION OF, AND REMOVE AND/OR RELOCATE, ALL AFFECTED SPRINKLER SYSTEMS INCLUDING HEADS, METERS, LINES AND OTHER APPURTENANCES AS DIRECTED BY THE TOWN OF ADDISON. (SEE IRRIGATION NOTE 16, SHEET 2)
2. CONTRACTOR SHALL REMOVE AND/OR RELOCATE ALL EXISTING LANDSCAPING IMPROVEMENTS INCLUDING TREES, SHRUBS, BOULDERS AND STEEL EDGING AS DIRECTED BY THE TOWN OF ADDISON. (NO SEPARATE PAY ITEM)
3. CONTRACTOR SHALL MATCH EXISTING PAVEMENT ELEVATION AT SAWCUT LINE.
4. ALL DIMENSIONS ARE TO FACE OF CURB UNLESS OTHERWISE NOTED.
5. PROPOSED LOCATIONS OF TRAFFIC SIGNALS AND APPURTENANCES ARE SHOWN ON THIS SHEET FOR INFORMATIONAL PURPOSES ONLY. SEE THE TRAFFIC SIGNAL PLAN (SHEET 9) FOR CONTROLLING LOCATIONS OF NEW SIGNAL POLES AND APPURTENANCES.
6. SEE SHEET 3 FOR LEGEND.

**!! WARNING !!**

EXISTING UTILITIES IN AREA!  
 LOCATION OF EXISTING UTILITIES SHOWN ARE APPROXIMATE. CONTRACTOR SHALL FIELD VERIFY LOCATIONS OF ALL EXISTING UTILITIES PRIOR TO CONSTRUCTION. CONTRACTOR SHALL CONTACT ALL APPLICABLE UTILITY COMPANIES INCLUDING (AT A MINIMUM) THE ENTITIES LISTED IN GENERAL NOTE 2.

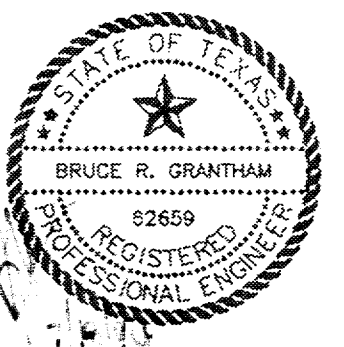


*Not a smooth transition here either*

*lane lines do not line up*

| NO. | REVISION | BY | DATE |
|-----|----------|----|------|
|     |          |    |      |
|     |          |    |      |
|     |          |    |      |
|     |          |    |      |

DESIGNED BY: B GRANTHAM  
 DRAWN BY: EH&A  
 CHECKED BY: B GRANTHAM  
 SCALE: 1" = 20'  
 DATE: JANUARY 1994  
 FILE: \\ADDISON\BUSINESS\BUS2



**EH&A** Espey, Huston & Associates, Inc.  
 Engineering & Environmental Consultants  
 13800 Montfort Drive, Suite 230  
 Dallas, Texas 75240 (214) 387-0771

**PAVING PLAN**  
 INTERSECTION IMPROVEMENTS  
 BELT LINE ROAD AT BUSINESS AVENUE  
 for  
 THE TOWN OF ADDISON

SHEET NO. 16  
 OF 46 SHEETS  
 JOB NO. 15411