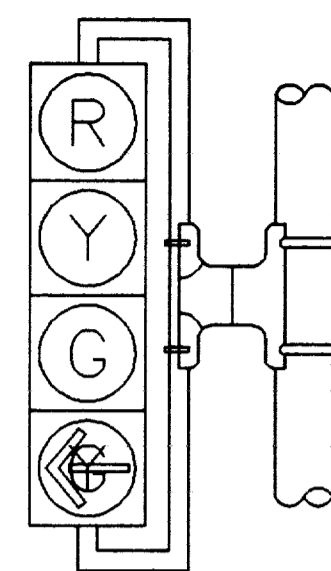
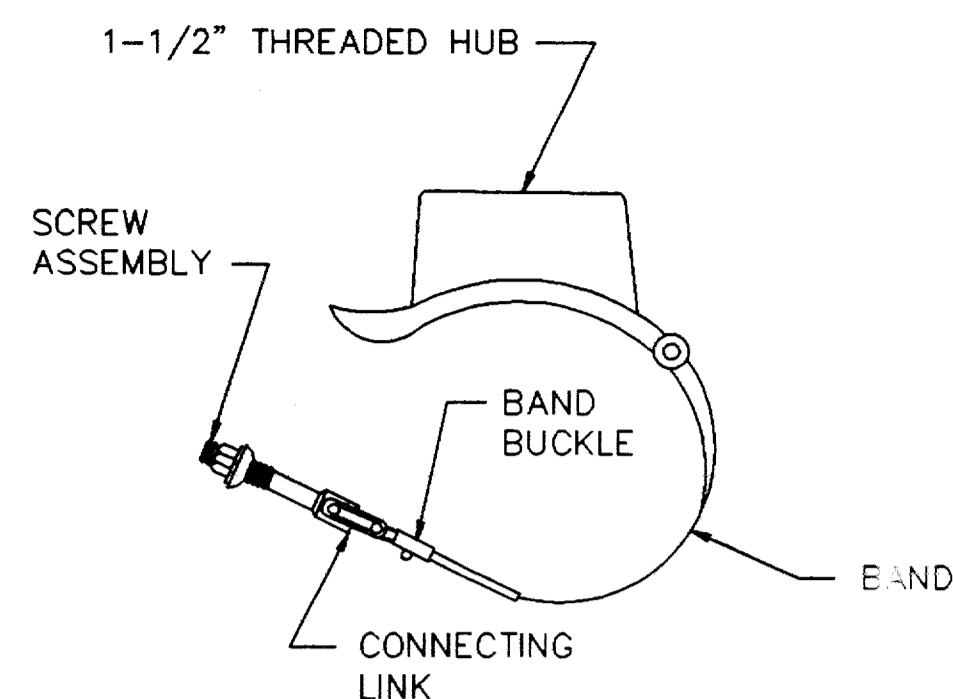


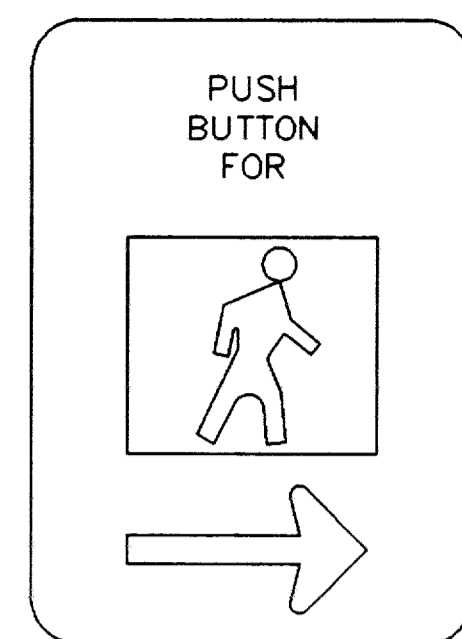
V3



V4LT



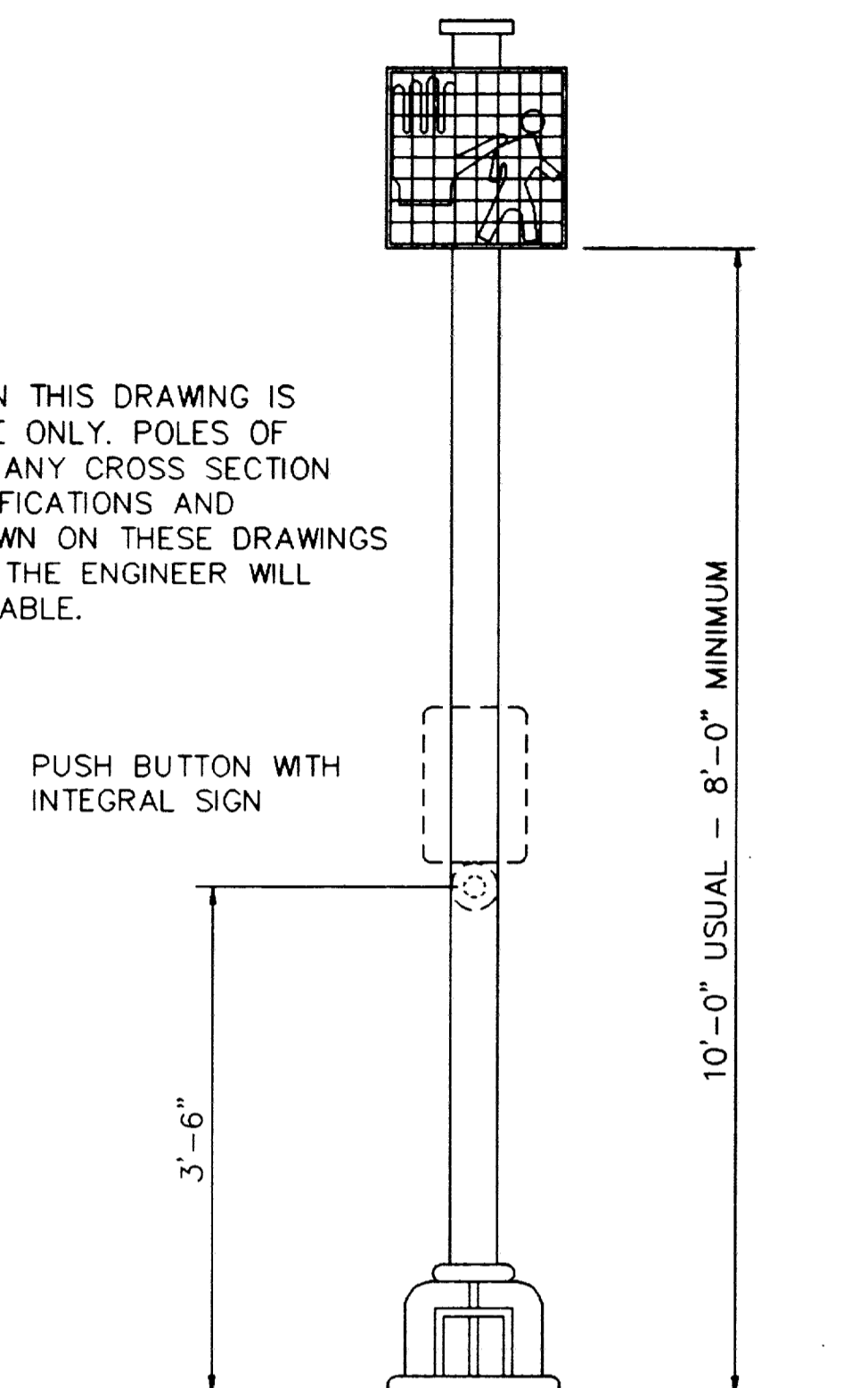
ASTRO MINI-BRAC



SIGN R10-4b
9" x 12"

PEDESTRIAN PUSH BUTTON
SIGN DETAILS

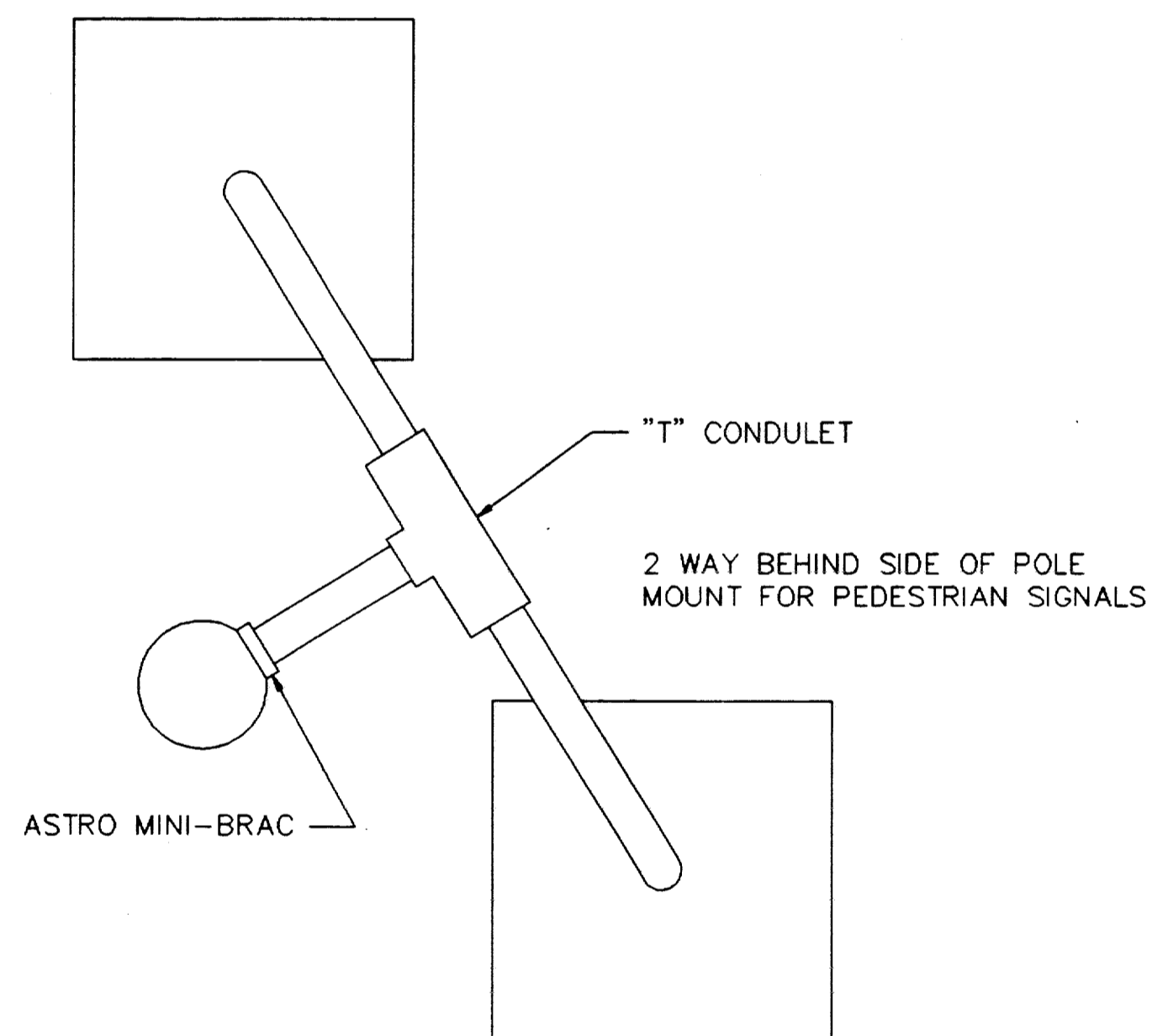
NOTE :
THE POLE SHOWN IN THIS DRAWING IS SHOWN AS EXAMPLE ONLY. POLES OF SIMILAR DESIGN OF ANY CROSS SECTION AND MEETING SPECIFICATIONS AND REQUIREMENTS SHOWN ON THESE DRAWINGS AND APPROVED BY THE ENGINEER WILL BE DEEMED ACCEPTABLE.



POST DETAIL

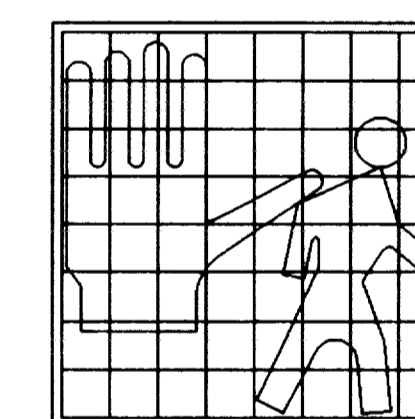
NOTES :

1. ALL SIGNAL HEAD LENSES SHALL BE 12" IN DIAMETER.
2. VEHICLE AND PEDESTRIAN SIGNAL HEADS SHALL BE MOUNTED WITH "ASTRO-BRACS" AND APPROPRIATE TUBING, PAINTED BLACK. ALL SIGNALS TO BE BLACK, ALL LENSES TO BE GLASS.
3. ALL VISORS SHALL BE TUNNEL VISORS.
4. ALL POLE MOUNTED VEHICLE AND PEDESTRIAN SIGNAL HEADS SHALL BE INSTALLED ON THE AWAY-FROM-TRAFFIC SIDE OF THE PEDESTAL OR MAST ARM POLE.
5. ALL SIGNAL HEADS WILL BE PROVIDED WITH BLACK 5" POLYCARBONATE VACUUM FORMED BACKPLATES.
6. ALL WIRING FOR VEHICLE AND PEDESTRIAN SIGNALS SHALL BE TOTALLY ENCLOSED WITHIN THE SIGNAL MOUNTING HARDWARE.
7. ALL DAMPING DEVICES SHALL BE 18" TO 2' WIDE BY 4' IN LENGTH.
8. ALL PEDESTRIAN SIGNAL HEADS AND PUSH BUTTON SIGNS SHALL DISPLAY THE SYMBOLIZED MESSAGES SHOWN ON THIS SHEET.
9. SYMBOLIZED MESSAGE HIGHT SHALL BE 10 INCHES MINIMUM.
10. PROVIDE DURO TEST 135 WATT SAVER LAMPS IN VEHICLE SIGNALS.
11. PROVIDE DURO TEST 60 WATT SAVER LAMPS IN PEDESTRIAN SIGNALS.



UPPER & LOWER ARMS
IDENTICAL

PEDESTRIAN SIGNAL HEAD MOUNTING
FOR TWO PEDESTRIAN SIGNAL HEADS

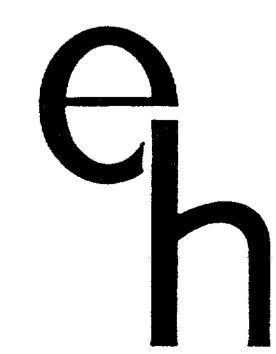
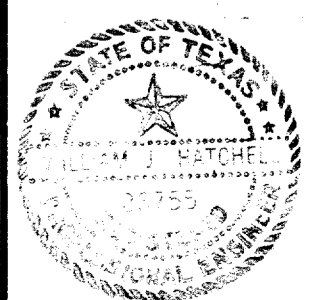


152A

PEDESTRIAN SIGNAL HEAD IDENTIFICATION

NO.	REVISION	BY	DATE

DESIGNED BY: _____
 DRAWN BY: _____
 CHECKED BY: _____
 SCALE: _____
 DATE: _____



ESPEY, HUSTON & ASSOCIATES, INC.
Engineering & Environmental Consultants
 13800 Montfort Drive Suite 230 Dallas, Texas 75240
 (214) 387-0771

TRAFFIC SIGNAL HEAD
IDENTIFICATION

SHEET NO. _____
 OF _____ SHEETS
 JOB NO. _____