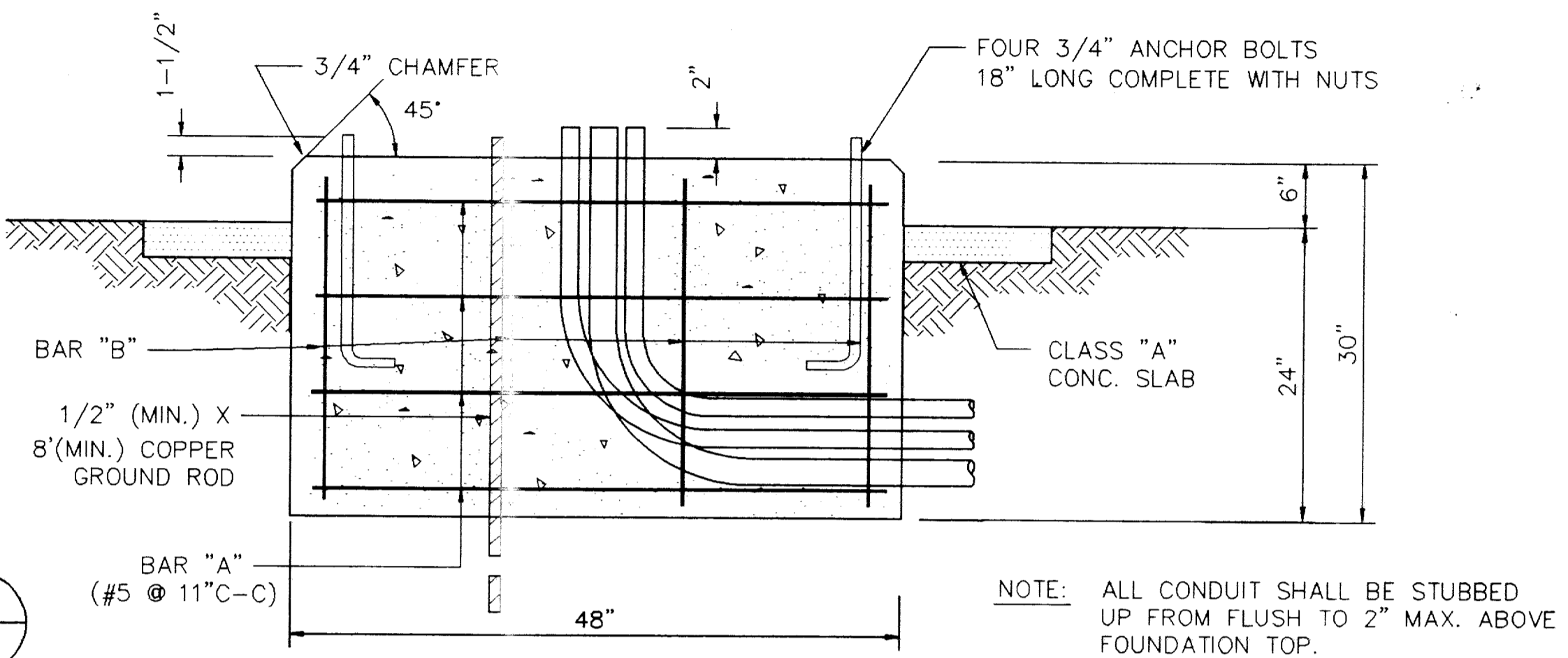
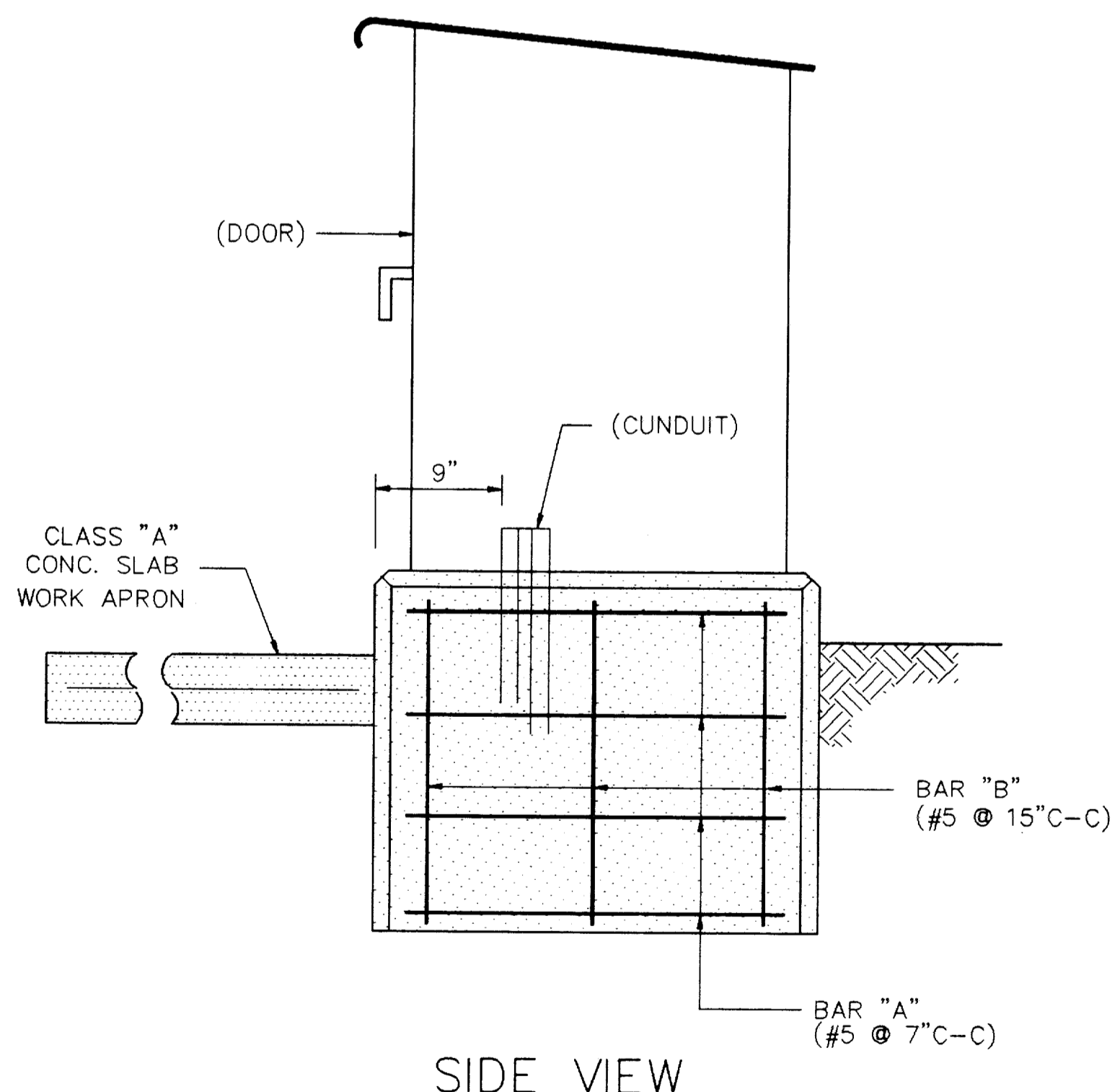


TOP VIEW
CONTROLLER FOUNDATION
DETAIL 1



ELEVATION SECTION A



SIDE VIEW

FDN. TYPE	DRILLED SHAFT DIA.	REINFORCING STEEL		DRILLED SHAFT LENGTH - feet (4),(5) (6)			ANCHOR BOLT DESIGN (1)			FOUNDATION DESIGN LOAD (2)		TYPICAL APPLICATION	
		VERT. BARS	SPIRAL & PITCH	10	15	40	ANCHOR BOLT DIA.	Fy (ksi)	BOLT CIRCLE DIA.	ANCHOR TYPE	MOMENT K-ft		SHEAR Kips
24-A	24"	4-#5	#2at12"	5.7	5.3	4.5	3/4"	36	12-3/4"	1	10	1	PEDESTAL POLE, PEDESTAL MOUNTED CONTROLLER.
30-A	30"	8-#7	#3at9"	11.3	10.3	8.0	1-1/2"	55	17"	2	87	3	MAST ARM ASSEMBLY (SEE SELECTION TABLE)
30-B	30"	8-#9	#3at9"	13.2	11.9	9.0	1-3/4"	55	19"	2	131	5	MAST ARM ASSEMBLY (SEE SELECTION TABLE) 30' STRAIN POLE WITH OR WITHOUT LUMINAIRE.
36-A	36"	12-#9	#3at9"	15.2	13.6	10.4	2"	55	21"	2	190	7	MAST ARM ASSEMBLY (SEE SELECTION TABLE) STRAIN POLE TALLER THAN 30' & STRAIN POLE WITH MAST ARM.

DESIGN WIND SPEED	MAXIMUM SINGLE ARM LENGTH	FDN 30-A	FDN 30-B	FDN 36-A
		80 MPH	36'	48'
100 MPH	MAXIMUM DOUBLE ARM LENGTH COMBINATIONS	24' x 24'		
		28' x 28'		
		32' x 28'	32' x 32'	
			36' x 36'	
		40' x 36'		
		44' x 28'	44' x 36'	
		24'	36'	44'
			24' x 24'	
			28' x 28'	
			32' x 24'	32' x 32'
				36' x 36'
				40' x 36'
				44' x 36'

- EXAMPLES :
- FOR 80MPH DESIGN WIND SPEED, FOUNDATION 30-A CAN SUPPORT UP TO A 32' ARM WITH ANOTHER ARM UP TO 28'.
 - FOR 100MPH DESIGN WIND SPEED, FOUNDATION 30-B CAN SUPPORT A SINGLE 36' MAST ARM.

LOCATION / IDENTIFICATION	AVG. N blows/ft	FDN TYPE	NO. (ea.)	DRILLED SHAFT LENGTH (6) (FEET)			
				24-A	30-A	30-B	36-A
All 55' Mast Arms & Poles		36-A	6				13.6
All 36' Mast Arms & Poles		30-A	2			10.3	
TOTAL DRILLED SHAFT LENGTHS							

GENERAL NOTES :

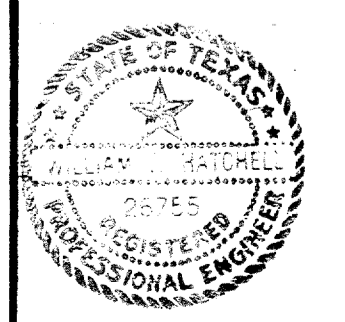
DESIGN CONFORMS TO 1975 AASHTO STANDARD SPECIFICATIONS FOR STRUCTURAL SUPPORTS FOR HIGHWAY SIGNS, LUMINAIRES AND TRAFFIC SIGNALS AND INTERIM REVISIONS THERETO.

REINFORCING STEEL SHALL CONFORM TO ITEM 440. CONCRETE SHALL BE CLASS C.

THREADS FOR ANCHORE BOLTS AND NUTS SHALL BE ROLLED OR CUT THREADS OF UNIFIED NATIONAL COARSE THREAD SERIES EXCEPT FOR A19387 BOLTS WHICH SHALL HAVE 8 PITCH THREAD SERIES. BOLTS AND NUTS SHALL HAVE CLASS 2A AND 2B FIT TOLERANCES. GALVANIZED NUTS SHALL BE TAPPED AFTER GALVANIZING.

ANCHOR BOLTS THAT ARE 1" IN DIAMETER OR LESS SHALL CONFORM TO ASTM A36. ANCHOR BOLTS LARGER THAN 1" IN DIAMETER SHALL CONFORM TO SPECIAL SPECIFICATION A36M55 OR ASTM A19387 OR A687; GALVANIZE OR COAT WITH ZINC-RICH PAINT A MINIMUM OF THE UPPER 14 INCHES OF ALL ANCHORE BOLTS UNLESS OTHERWISE NOTED. NUTS FOR ANCHOR BOLTS SHALL CONFORM TO ASTM A563 Gr A OR A BETTER HEAVY HEX. EXPOSED NUTS SHALL BE GALVANIZED OR COATED WITH ZINC-RICH PAINT. WASHERS SHALL BE GALVANIZED. TEMPLATES AND EMBEDDED NUTS NEED NOT BE GALVANIZED.

DESIGNED BY:	
DRAWN BY:	
CHECKED BY:	
SCALE:	
DATE:	



ESPEY, FUSTON & ASSOCIATES, INC.
Engineering & Environmental Consultants
 13800 Montfort Drive Suite 230 Dallas, Texas 75240
 (214) 387-0771

FOUNDATION SUMMARY

SHEET NO.	
OF SHEETS	
JOB NO.	