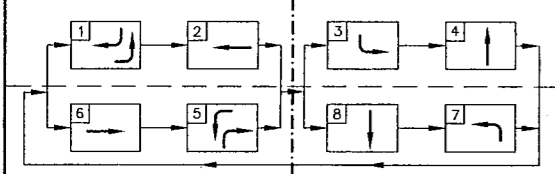


CABLE TERMINATION CHART

CABLE CONDUCTOR	T-5		T-6		T-7		T-8	
	S.H. No.	INDICATION	S.H. No.	INDICATION	S.H. No.	INDICATION	S.H. No.	INDICATION
WHITE/BLACK	SPARE		SPARE		SPARE		SPARE	
WHITE	COMMON		COMMON		COMMON		COMMON	
RED	3-5	R	18-20	R	13-15	R	8-10	R
GREEN	3-5	G	18-20	G	13-15	G	8-10	G
ORANGE	3-5	Y	18-20	Y	13-15	Y	8-10	Y
BLACK/WHITE	SPARE		20	→Y	SPARE		10	→Y
BLUE/BLACK	SPARE		20	→G	SPARE		10	→G
BLACK	1-2	→Y	16-17	→Y	11-12	→Y	6-7	→Y
BLUE	1-2	→G	16-17	→G	11-12	→G	6-7	→G
GREEN/BLACK	SPARE		SPARE		SPARE		SPARE	
BLUE/RED	21	W	23	W	25	W	27	W
BLUE/WHITE	22	W	24	W	26	W	28	W
RED/BLACK	21	DW	23	DW	25	DW	27	DW
ORANGE/BLACK	22	DW	24	DW	26	DW	28	DW
RED/WHITE	PB-21	Ø8	PB-23	Ø6	PB-25	Ø4	PB-27	Ø2
ORANGE/RED	PB-22	Ø2	PB-24	Ø8	PB-26	Ø6	PB-28	Ø4
WHITE/RED	PBCOMMON		PBCOMMON		PBCOMMON		PBCOMMON	
BLACK/RED	SPARE		SPARE		SPARE		SPARE	
GREEN/WHITE	SPARE		SPARE		SPARE		SPARE	
RED/GREEN	1-2	→R	16-17	→R	11-12	→R	6-7	→R

PHASE DIAGRAM



ITEM 628 - ELECTRICAL SERVICE

LOCATION	TYPE	EA
S.W. CORNER OF QUORUM DR AT BELT LINE RD.	TY S(120/240)000(NS)GS(E)SP(U)	1

CNDRS INSIDE POLE

SIGNAL POLE	ITEM 684 TYPE A		
	3 CNDR. (2) CABLE (LF)	5 CNDR. CABLE (LF)	7 CNDR. CABLE (LF)
T-5	55	255	0
T-6	55	245	10
T-7	55	255	0
T-8	55	200	10
TOTAL	220	955	20

(2) SEE NOTE (2)

DETECTOR DETAILS

LOOP	DIMEN.	TURNS	DET. CTR.	DEL INH	EXTEND	DELAY	ITEM 688 - DETECTORS (14 AWG) LOOP WIRE COLOR (LF)**					SAW CUT (LF)	PED DETECT** (PUSH BTN) NOTE(1)
							BLU	BLK	ORNG	BRN	GRN		
Ø1-1	5 x 60	1-2-1	PRESENCE		0.5	5	325				230	EA	
Ø1-2	5 x 60	1-2-1	PRESENCE		0.5	5		335			240		
Ø2-1	5 x 60	1-2-1	PRESENCE		0.5	5				300	205		
Ø2-2	5 x 60	1-2-1	PRESENCE		0.5	5			310		215		
Ø2-3	5 x 60	1-2-1	PRESENCE		0.5	5		320			225		
Ø2(PED)												2	
Ø3-1	5 x 60	1-2-1	PRESENCE		0.5	5	340				230		
Ø3-2	5 x 60	1-2-1	PRESENCE		0.5	5		350			240		
Ø4-1	5 x 60	1-2-1	PRESENCE		0.5	5				360	210		
Ø4-2	5 x 60	1-2-1	PRESENCE		0.5	5			370		220		
Ø4(PED)												2	
Ø5-1	5 x 60	1-2-1	PRESENCE		0.5	5	340				230		
Ø5-2	5 x 60	1-2-1	PRESENCE		0.5	5		350			240		
Ø6-1	5 x 60	1-2-1	PRESENCE		0.5	5				305	200		
Ø6-2	5 x 60	1-2-1	PRESENCE		0.5	5			310		220		
Ø6-3	5 x 60	1-2-1	PRESENCE		0.5	5		320			230		
Ø6(PED)												2	
Ø7-1	5 x 60	1-2-1	PRESENCE		0.5	5	330				230		
Ø7-2	5 x 60	1-2-1	PRESENCE		0.5	5		340			240		
Ø8-1	5 x 60	1-2-1	PRESENCE		0.5	5				315	210		
Ø8-2	5 x 60	1-2-1	PRESENCE		0.5	5			325		220		
Ø8(PED)												2	
SUBTOTAL							1335	1375	640	1315	1280	4035	8

** FOR CONTRACTOR INFORMATION

ITEM 618

CONDUIT SUMMARY	
TYPE	LENGTH (LF)
4" PVC (TRENCH)	20
4" PVC (BORE)	540
3" PVC (TRENCH)	40
2" PVC (TRENCH)	1900
1 1/2" RM	30
1" PVC *	170

* DETECTOR LEAD-IN PAIRS OR GROUP OF PAIRS VARIABLE LENGTH

ITEM 624

GROUND BOX SUMMARY	
TYPE	EA
A	7
C	1

SMALL SIGN SUMMARY ****

SHT. NO.	SIGN NO.	SIGN TYPE	SIGN TEXT	SIGN DIMEN.	REFLECT. SHEET.	PLYWOOD TYPE A	ALUM. TYPE A	TYPE OF MOUNT
43	X	R10-5	LEFT ON GREEN ARROW ONLY	24" x 30"	C		X	MOUNT ON MAST ARMS T-5, T-6, T-7, T-8
43	X	R3-8LL	ONLY ONLY	30" x 30"	C		X	MOUNT ON MAST ARMS T-5, T-6, T-7, T-8
43	X	SR3-4		30" x 30"	C		X	MOUNT ON MAST ARMS T-5, T-6, T-7, T-8

**** NO SEPARATE PAY ITEM. SUBSIDIARY TO BID ITEM 680. FOR CONTRACTORS INFORMATION ONLY

REFLECTIVE SHEETING WILL BE DESIGNATED AS :

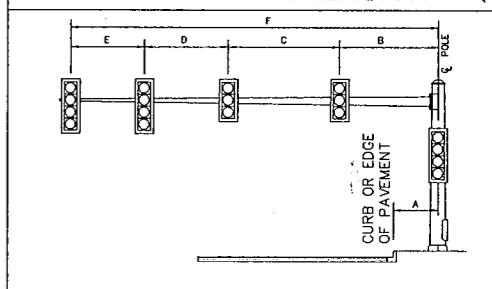
TYPE A - ENGINEER GRADE
TYPE B - SUPER ENGINEER GRADE
TYPE C - HIGH SPECIFIC INTENSITY

SIGNAL HEADS NOTE(1)**

No.	TYPE	BACKPLATE (12")		VEH SIG SEC (12")	PED. SIG. SEC.
		3 SEC.	4 SEC.		
1	V3LT	1		3	
2	V3LT	1		3	
3	V3	1		3	
4	V3	1		3	
5	V3	1		3	
6	V3LT	1		3	
7	V3LT	1		3	
8	V3	1		3	
9	V3	1		3	
10	V4RT		1	4	
11	V3LT	1		3	
12	V3LT	1		3	
13	V3	1		3	
14	V3	1		3	
15	V3	1		3	
16	V3LT	1		3	
17	V3LT	1		3	
18	V3	1		3	
19	V3	1		3	
20	V4RT		1	4	
21-22	143C				2
23-24	143C				2
25-26	143C				2
27-28	143C				2
TOTALS		18	2	62	8

** FOR CONTRACTOR INFORMATION

MAST ARM DIMENSION NOTE(1)



POLE No.	TYPE	A	B	C	D	E	F
T-5		8	15	15	15	10	55
T-6		8	15	15	15	10	55
T-7		9	15	15	15	10	55
T-8		8	10	10	10	10	40

NOTES :

(1) THE TOWN OF ADDISON WILL PROVIDE AND THE CONTRACTOR SHALL PICK UP AND INSTALL SIGNAL POLES, MAST ARMS, TRANSFORMER BASES, SIGNAL HEADS, CONTROLLER CABINETS, CONTROLLERS, ANCHOR BOLTS FOR CONTROLLER CABINETS, TRAFFIC SIGNAL POLE ANCHOR BOLT ASSEMBLIES, AND PEDESTRIAN PUSH BUTTONS. THE CONTRACTOR SHALL PICK UP THESE ITEMS AT :

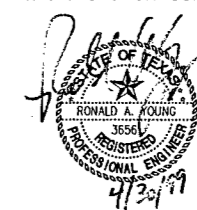
TOWN OF ADDISON SERVICE CENTER
16801 WESTGROVE DR.
ADDISON, TEXAS 75001
CONTACT JEFF MARKIEWICZ AT (972) 450-2871

INSTALLATION OF ITEMS PROVIDED BY THE TOWN OF ADDISON SHALL BE PAID FOR UNDER ITEM 680.

(2) TOWN OF ADDISON WILL PROVIDE OPTICOM CABLE AND OPTICOM HEADS AND THE CONTRACTOR SHALL INSTALL THEM. THE CONTRACTOR SHALL PICK UP THESE ITEMS AT THE TOWN OF ADDISON SERVICE CENTER AS SHOWN IN NOTE (1). INSTALLATION SHALL BE SUBSIDIARY TO ITEM 680.

(3) ALL ITEMS AND QUANTITIES SHOWN ON THIS SHEET ARE FOR THE QUORUM DRIVE/BELT LINE ROAD INTERSECTION.

(4) THE TOWN OF ADDISON WILL PROVIDE AND INSTALL SMALL ROADSIDE SIGNS UPON COMPLETION OF CONSTRUCTION.



SHEET 4 OF 4

BARTON-ASCHMAN ASSOCIATES, INC.

TRAFFIC SIGNAL PLANS
QUANTITY SUMMARY
QUORUM DRIVE AT BELT LINE ROAD
ADDISON TRANSIT PASS
ADDISON, TEXAS

REVISION	DATE	FED. ROAD DIV. No.	FEDERAL AID PROJECT NO.	SHEET No.
		6	CM 97 (449)	44
		STATE	STATE DIST.	COUNTY
		TEXAS	DALLAS	DALLAS
DESIGNED BY: R.A.Y.		CONT.	SECT.	JOB
DRAWN BY: B-A		8050	18	034 BELT LINE RD
CHECKED BY: L.M.P.		BA FILE NAME :		

(2) SEE NOTE (2)