

BENCHMARK :

" □ " CUT ON THE RADIUS OF PARKING ISLAND IN SAM'S CLUB PARKING LOT 75' SOUTH OF BELT LINE ROAD AND 80 WEST OF THE EAST ENTRANCE OF SAM'S CLUB. (STA 47+52, 103' RT)

LEGEND :

- PGL PROFILE GRADE LINE
- PC POINT OF CURVATURE
- PT POINT OF TANGENCY
- PRC POINT OF REVERSE CURVE
- PCC POINT OF COMPOUND CURVE
- PCR POINT OF CURB RETURN
- EX EXISTING
- RT RIGHT
- LT LEFT
- BARRIER FREE RAMP
- PROP. NEW PAVEMENT
- EX. SPOT GUTTER ELEV.

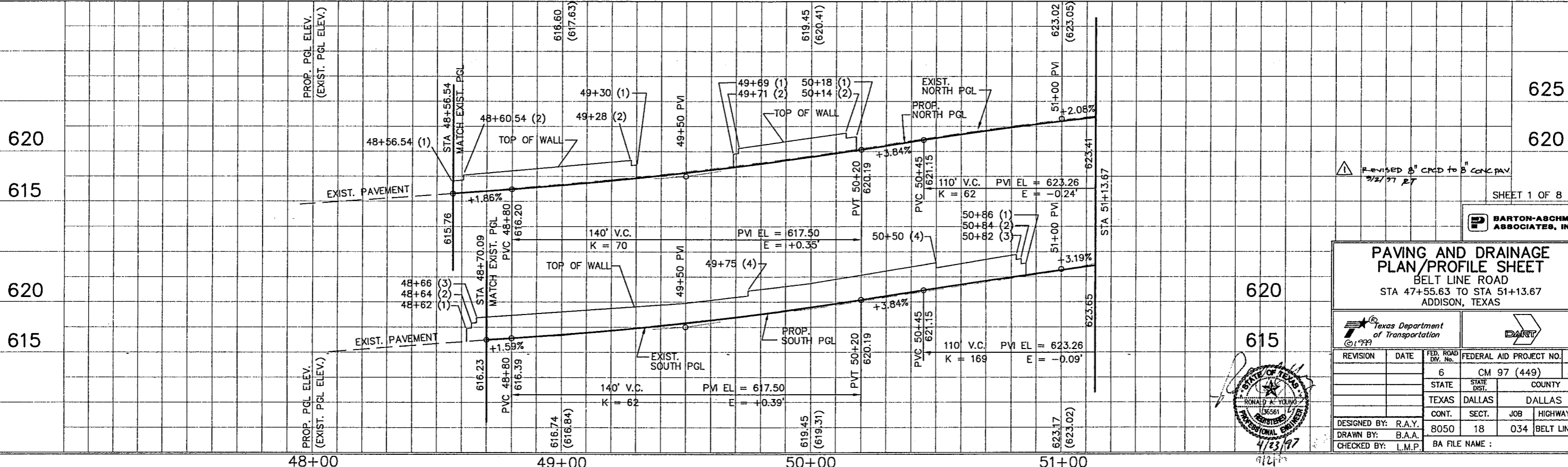
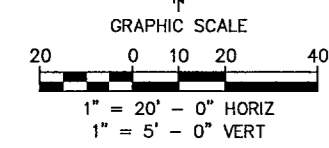
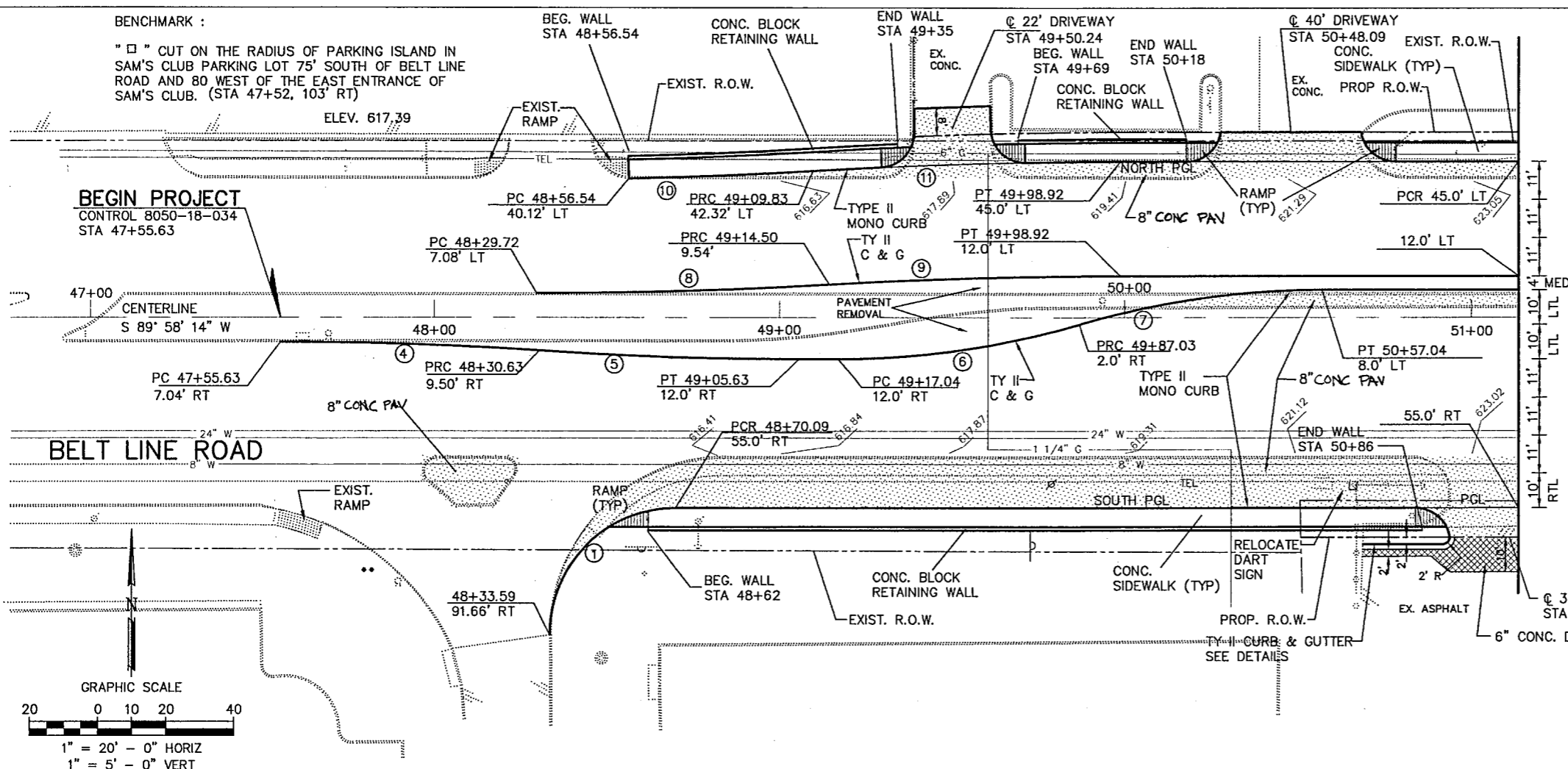
CURVE TABLE

NO.	DELTA	RADIUS	LENGTH	NO.	DELTA	RADIUS	LENGTH
①	90° 14' 46"	36.5'	57.49'	7	16° 15' 37"	250.0'	70.95'
4	03° 49' 06"	1126.25'	75.06'	8	03° 21' 06"	1450.0'	84.82'
5	03° 49' 06"	1126.25'	75.06'	9	03° 20' 16"	1450.0'	84.47'
6	16° 15' 37"	250.0'	70.95'	10	02° 09' 32"	1417.0'	53.39'
				11	03° 26' 31"	1483.0'	89.09'

NOTES :

1. ALL DRIVEWAY RADII SHALL BE 15' UNLESS NOTED OTHERWISE.
2. BARRIER FREE RAMPS SHALL BE CONSTRUCTED AT ALL DRIVEWAYS AND STREET INTERSECTIONS. SEE PLANS FOR LOCATIONS.
3. SEE DRIVEWAY PROFILE PLAN FOR DRIVEWAY PROFILES.
4. FINAL LOCATIONS OF DART SIGNS SHALL BE AS DIRECTED BY THE ENGINEER AND SHALL BE PAID FOR UNDER ITEM 649.

BEGIN PROJECT
CONTROL 8050-18-034
STA 47+55.63



REVISION 8" CRPD TO 8" CONC PAV
2/2/97 RT

SHEET 1 OF 8

BARTON-ASCHMAN ASSOCIATES, INC.

PAVING AND DRAINAGE PLAN/PROFILE SHEET
BELT LINE ROAD
STA 47+55.63 TO STA 51+13.67
ADDISON, TEXAS

DESIGNED BY: R.A.Y.	8050	18	034	BELT LINE RD
DRAWN BY: B.A.A.	BA FILE NAME :			
CHECKED BY: L.M.P.				

