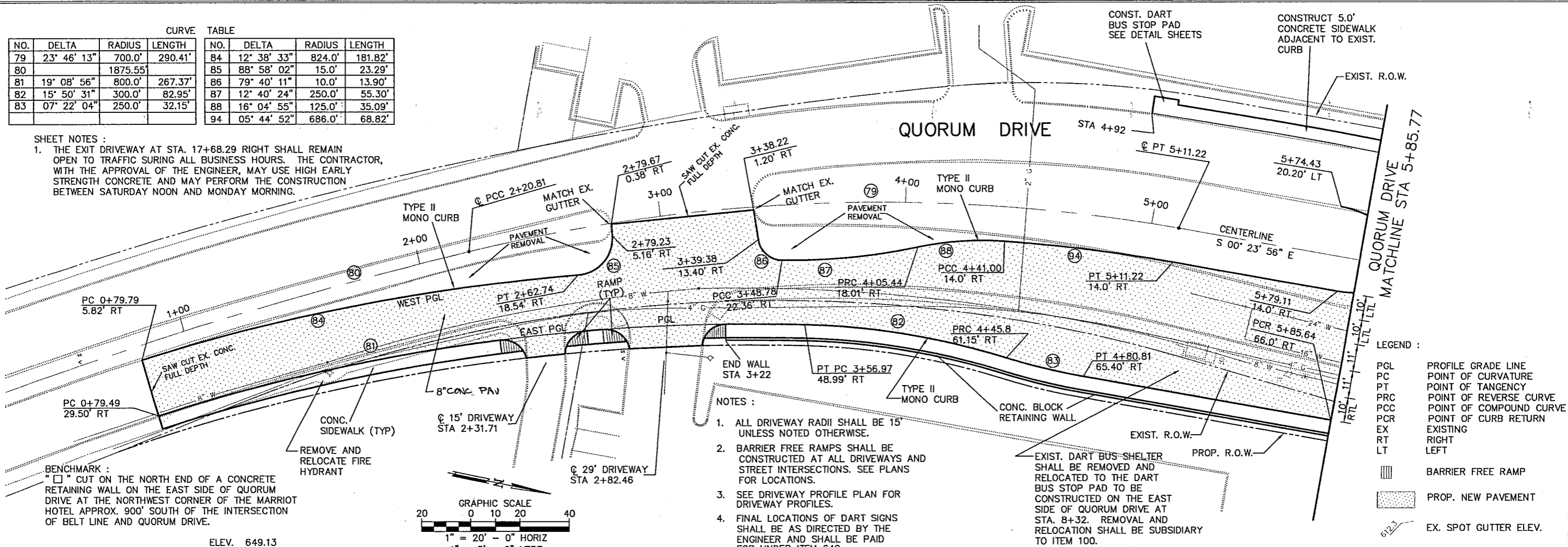


CURVE TABLE				CURVE TABLE			
NO.	DELTA	RADIUS	LENGTH	NO.	DELTA	RADIUS	LENGTH
79	23° 46' 13"	700.0'	290.41'	84	12° 38' 33"	824.0'	181.82'
80		1875.55'		85	88° 58' 02"	15.0'	23.29'
81	19° 08' 56"	800.0'	267.37'	86	79° 40' 11"	10.0'	13.90'
82	15° 50' 31"	300.0'	82.95'	87	12° 40' 24"	250.0'	55.30'
83	07° 22' 04"	250.0'	32.15'	88	16° 04' 55"	125.0'	35.09'
				94	05° 44' 52"	686.0'	68.82'

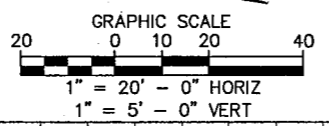
SHEET NOTES:  
 1. THE EXIT DRIVEWAY AT STA. 17+68.29 RIGHT SHALL REMAIN OPEN TO TRAFFIC DURING ALL BUSINESS HOURS. THE CONTRACTOR, WITH THE APPROVAL OF THE ENGINEER, MAY USE HIGH EARLY STRENGTH CONCRETE AND MAY PERFORM THE CONSTRUCTION BETWEEN SATURDAY NOON AND MONDAY MORNING.



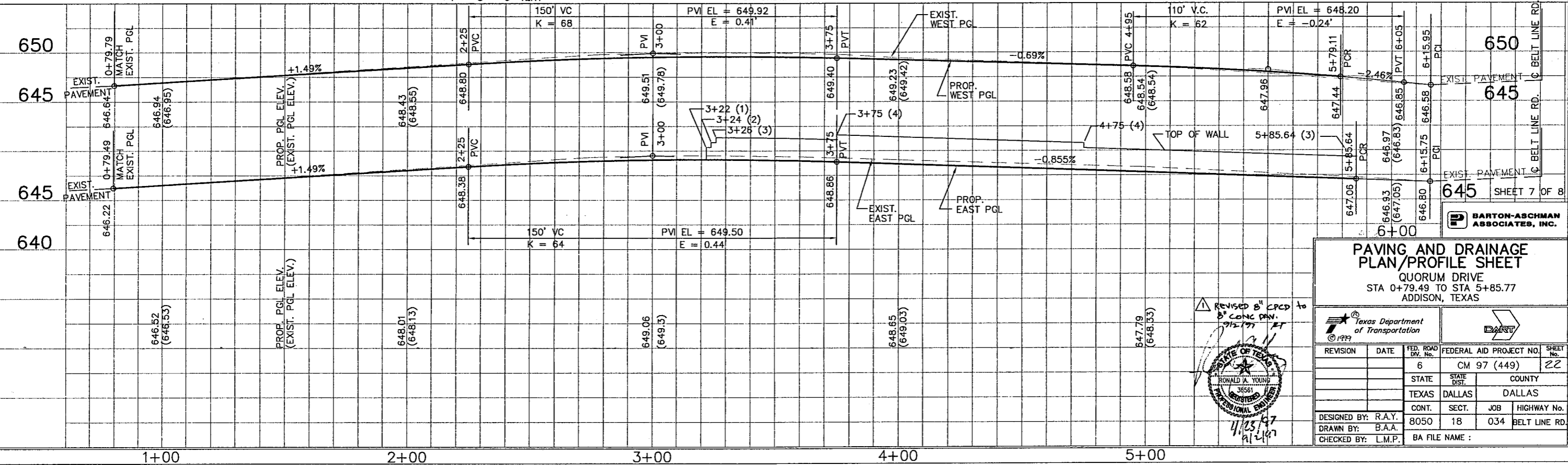
- NOTES:
- ALL DRIVEWAY RADII SHALL BE 15' UNLESS NOTED OTHERWISE.
  - BARRIER FREE RAMPS SHALL BE CONSTRUCTED AT ALL DRIVEWAYS AND STREET INTERSECTIONS. SEE PLANS FOR LOCATIONS.
  - SEE DRIVEWAY PROFILE PLAN FOR DRIVEWAY PROFILES.
  - FINAL LOCATIONS OF DART SIGNS SHALL BE AS DIRECTED BY THE ENGINEER AND SHALL BE PAID FOR UNDER ITEM 649.

- LEGEND:
- PGL PROFILE GRADE LINE
  - PC POINT OF CURVATURE
  - PT POINT OF TANGENCY
  - PRC POINT OF REVERSE CURVE
  - PCC POINT OF COMPOUND CURVE
  - PCR POINT OF CURB RETURN
  - EX EXISTING
  - RT RIGHT
  - LT LEFT
  - Barrier Free Ramp
  - PROP. NEW PAVEMENT
  - EX. SPOT GUTTER ELEV.

BENCHMARK:  
 "X" CUT ON THE NORTH END OF A CONCRETE RETAINING WALL ON THE EAST SIDE OF QUORUM DRIVE AT THE NORTHWEST CORNER OF THE MARRIOTT HOTEL APPROX. 900' SOUTH OF THE INTERSECTION OF BELT LINE AND QUORUM DRIVE.



ELEV. 649.13



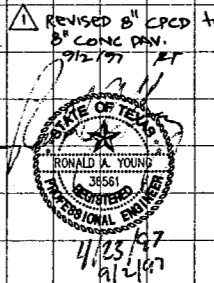
**PAVING AND DRAINAGE PAVING/PROFILE SHEET**  
 QUORUM DRIVE  
 STA 0+79.49 TO STA 5+85.77  
 ADDISON, TEXAS

DESIGNED BY: R.A.Y.  
 DRAWN BY: B.A.A.  
 CHECKED BY: L.M.P.

REVISION: 6  
 DATE: 11/25/97  
 FEDERAL AID PROJECT NO.: CM 97 (449)  
 STATE: TEXAS  
 COUNTY: DALLAS  
 JOB: 18  
 HIGHWAY No.: 034

REVISION: 1  
 DATE: 11/25/97  
 FEDERAL AID PROJECT NO.: CM 97 (449)  
 STATE: TEXAS  
 COUNTY: DALLAS  
 JOB: 18  
 HIGHWAY No.: 034

BA FILE NAME:



BARTON-ASCHMAN ASSOCIATES, INC.

SHEET 7 OF 8