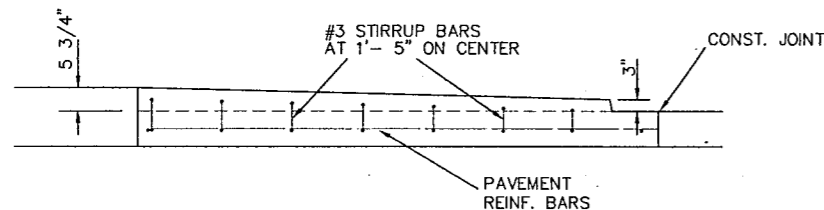
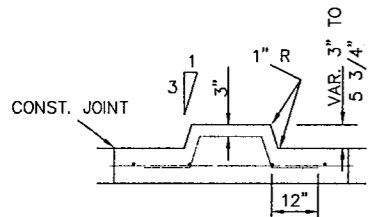


MONOLITHIC MEDIAN NOSE
 NOT TO SCALE



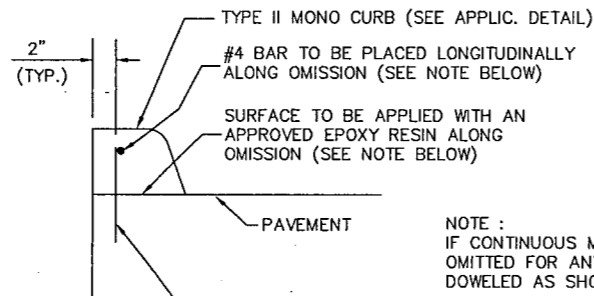
SECTION B - B
 NOT TO SCALE



SECTION A - A
 NOT TO SCALE

GENERAL NOTES :

1. REINFORCING BARS SHALL HAVE A MINIMUM LAP OF 15" (INCLUDING DOWELS).
2. PROVIDE 3/4" EXPANSION JOINT MATERIAL WHERE CURB IS ADJACENT TO SIDEWALK, RETAINING WALL, PLANTER OR RIPRAP.
3. DIMENSIONS RELATING TO REINFORCING STEEL ARE TO THE CENTERS OF BARS.
4. EXPANSION AND/OR CONSTRUCTION JOINTS IN PAVING SHALL EXTEND UP TO AND THROUGH ALL CURBS AND GUTTER SECTIONS.
5. CONCRETE SHALL BE CLASS A
6. PROVIDE EXPANSION AND DUMMY JOINTS TO MATCH EXISTING EXPANSION AND DUMMY JOINTS IN THE EXISTING PAVEMENT. SPACING SHALL COINCIDE WITH EXISTING JOINTS.

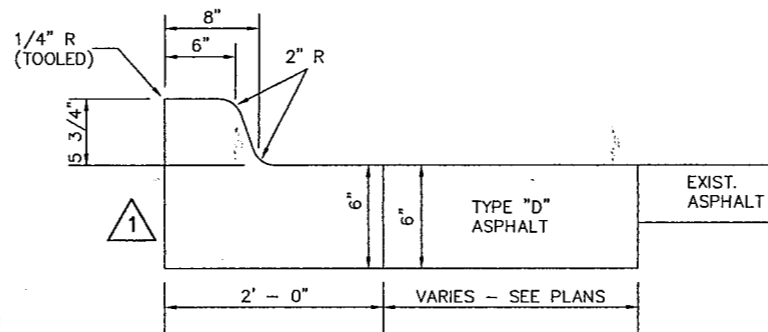


DOWEL CURB
 NOT TO SCALE

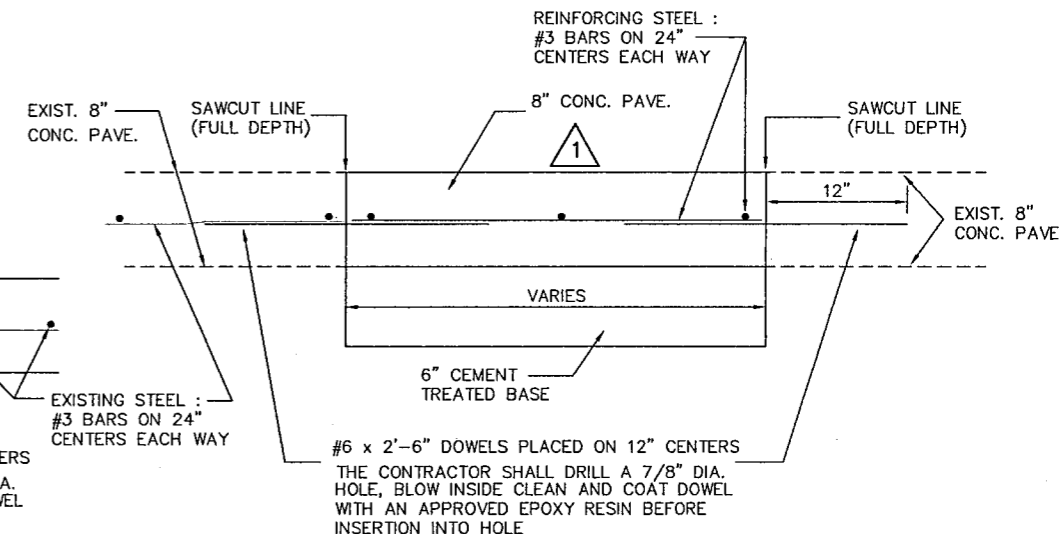
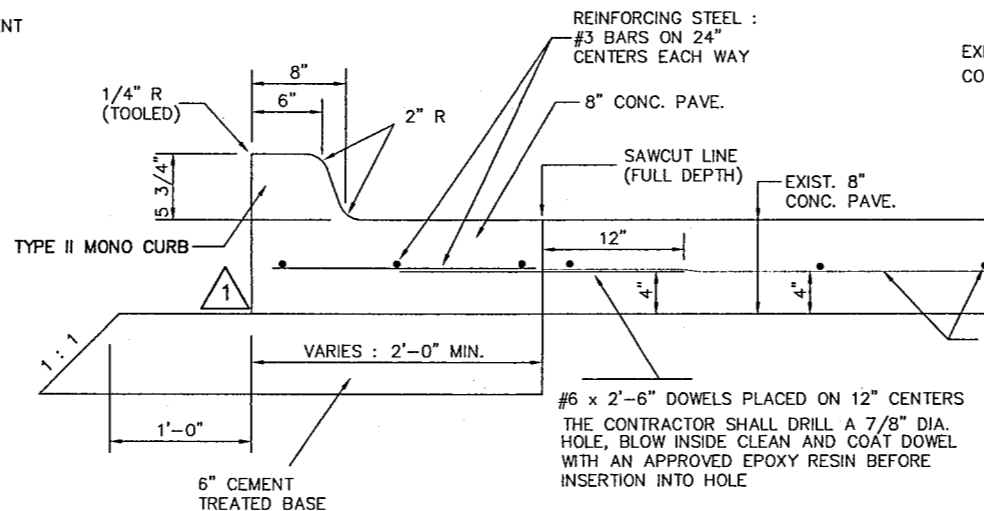
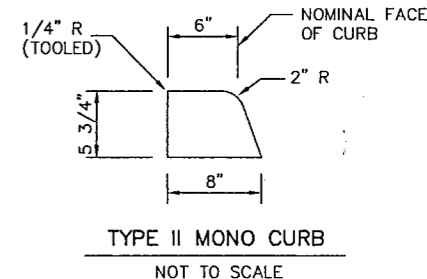
NOTE :
 IF CONTINUOUS MONOLITHIC CURB HAS TO BE
 OMITTED FOR ANY REASON, THE CURB SHALL BE
 DOWELED AS SHOWN ABOVE

#4 x 8" DOWELS PLACED ON 12" CENTERS
 (IF DOWELS ARE PLACED AFTER PAVEMENT HAS
 CURED, THE CONTRACTOR SHALL DRILL A 5/8" DIA.
 HOLE, BLOW INSIDE CLEAN AND COAT DOWEL
 WITH AN APPROVED EPOXY RESIN BEFORE
 INSERTION INTO HOLE)

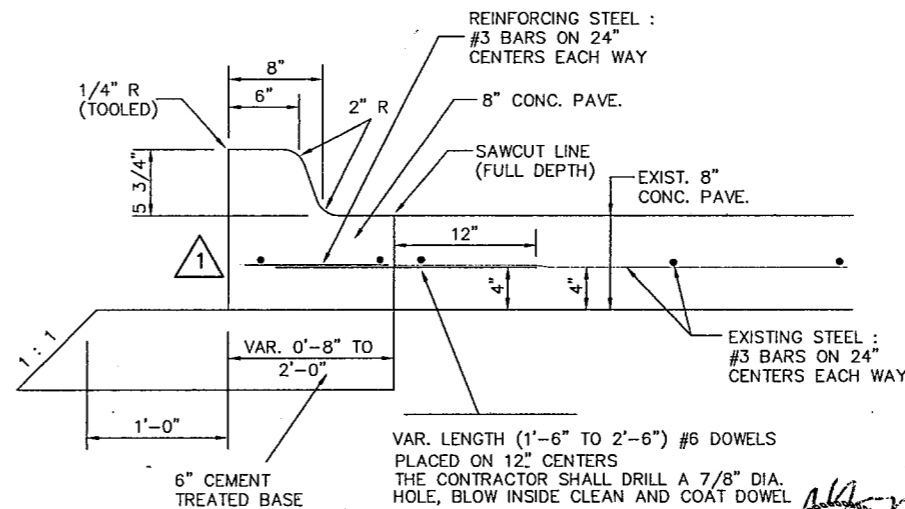
8" CONCRETE PAVEMENT
 (2'-0" AND WIDER)
 PLACED ADJACENT TO EXIST. CONC. PAVEMENT
 NOT TO SCALE



TYPE II CURB & GUTTER
 NOT TO SCALE



NEW PAVEMENT "FILL-IN"
 NOT TO SCALE



TYPE II CURB AND GUTTER
 (0'-8" TO 2'-0" WIDE)
 PLACED ADJACENT TO EXIST. CONC. PAVEMENT
 NOT TO SCALE

REVISED 9/2/97 P.T

SHEET 1 OF 7

BARTON-ASCHMAN ASSOCIATES, INC.

MISCELLANEOUS DETAILS SHEET

ADDISON TRANSIT PASS
 ADDISON, TEXAS

Texas Department of Transportation		DART	
REVISION	DATE	FED. ROAD DIV. No.	FEDERAL AID PROJECT NO.
Δ REUSE STEEL	7/7/97	6	CM 97 (449)
	7/11/97		
		STATE	COUNTY
		TEXAS	DALLAS
DESIGNED BY:	R.A.Y.	CONT.	SECT.
DRAWN BY:	B-A	8050	18
CHECKED BY:	L.M.P.		034
			BELT LINE RD.
			BA FILE NAME :

PROFESSIONAL ENGINEER
 RONALD A. YOUNG
 36561
 8/21/97
 9/2/97