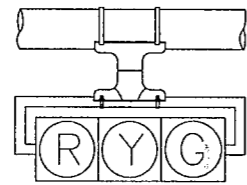
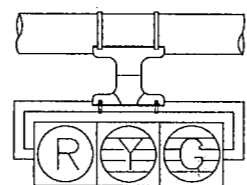


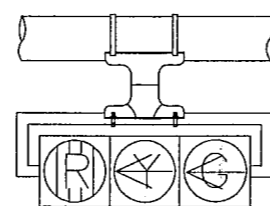
H1TA



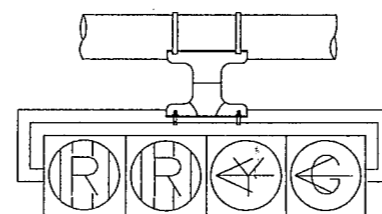
H3



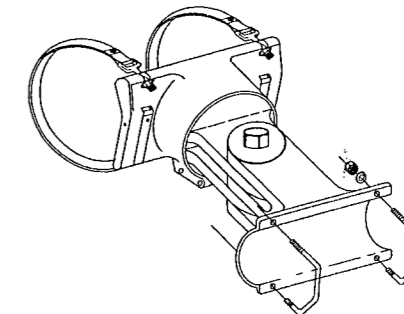
H3L



H3LLT

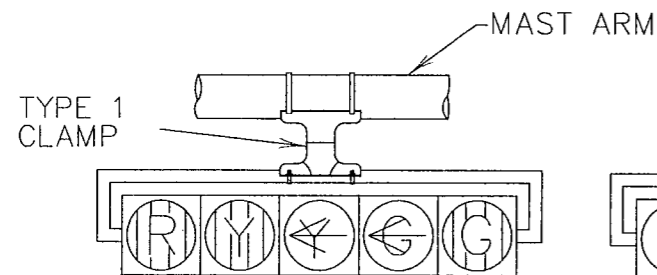


H4LLT

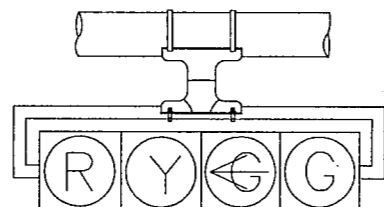


TYPE 2 CLAMP KIT

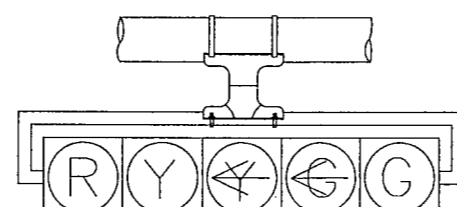
SHALL BE INSTALLED WHEN ROTATION ABOUT THE HORIZONTAL AND VERTICAL AXES ARE NEEDED.



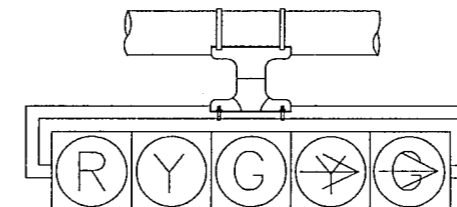
H5LLT



H4LT

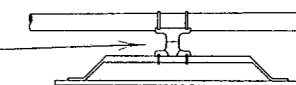


H5LT



H5RT

TYPE 1 CLAMP

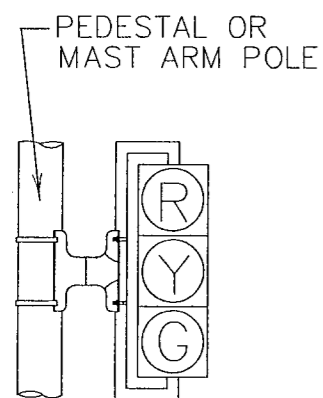


ONE (1) CLAMP SHALL BE USED ON SIGNS LESS THAN OR EQUAL TO 5'-0" IN LENGTH.

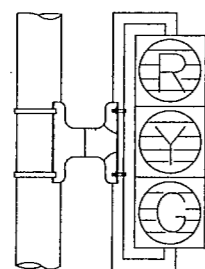
TWO (2) CLAMPS SHALL BE USED ON SIGNS GREATER THAN 5'-0" IN LENGTH.

LOUVER INSTALLED WITH BLADES HORIZONTAL

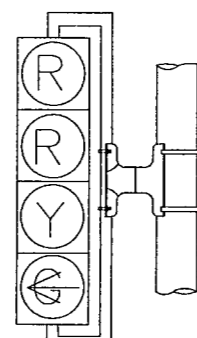
LOUVER INSTALLED WITH BLADES VERTICAL



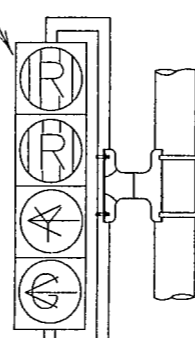
V3



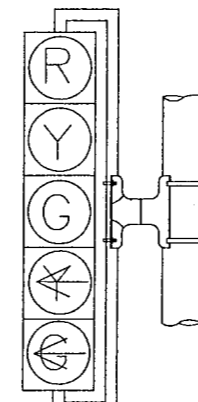
V3L



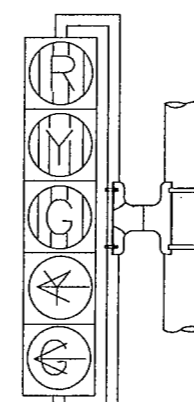
V4LT



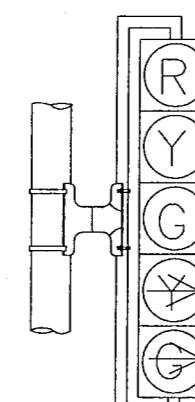
V4LLT



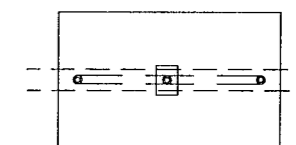
V5LT



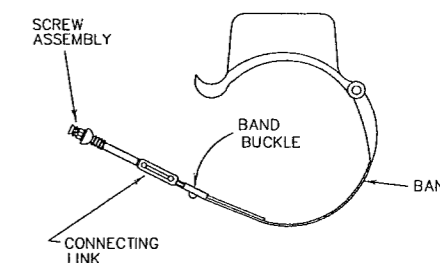
V5LLT



V5RT



SIGN OR DAMPENING DEVICE ATTACHMENT FOR MAST ARMS



TYPE 1 AND 2 CLAMPS

NOTES:

1. VEHICLE SIGNAL HEADS SHALL BE MOUNTED WITH TYPE 1 CLAMP AND APPROPRIATE TUBING.
2. ALL POLE MOUNTED VEHICLE HEADS SHALL BE INSTALLED ON THE AWAY-FROM-TRAFFIC SIDE OF THE PEDESTAL OR MAST ARM POLE.
3. ALL DAMPING DEVICES SHALL BE 18" TO 2' WIDE BY 4' IN LENGTH.

DALLAS DISTRICT STANDARD

FED. RD. DIV. NO.	FEDERAL AID PROJECT NO.	SHEET NO.
6	CM 97 (449)	50
STATE	STATE DIST.	COUNTY
TEXAS	DALLAS	DALLAS
CONT.	SECT.	JOB
8050	18	034
		HIGHWAY NO.
		BELT LINE

TRAFFIC SIGNAL HEAD IDENTIFICATION