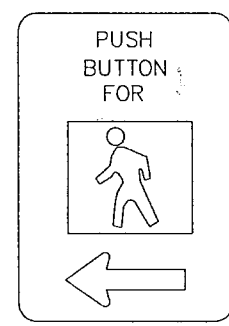
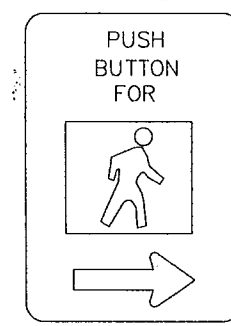


SIGN R10-4bL  
9" x 12"



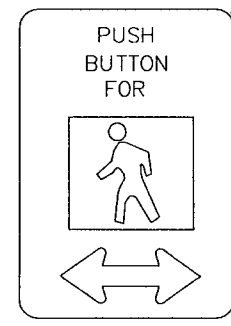
PEDESTRIAN PUSHBUTTON  
SIGN DETAILS

SIGN R10-4bR  
9" x 12"

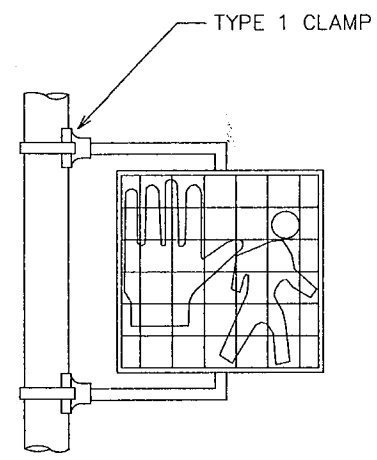


PEDESTRIAN PUSHBUTTON  
SIGN DETAILS

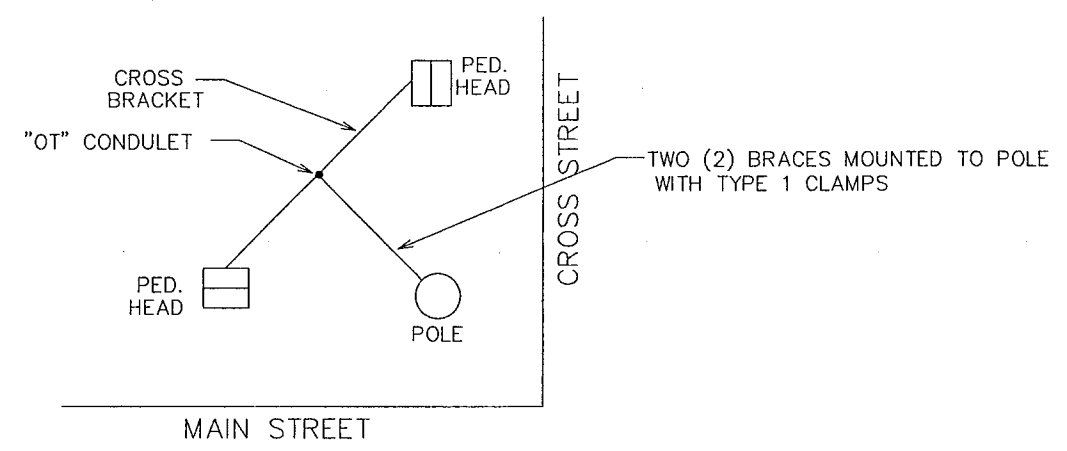
SIGN R10-4bRL  
9" x 12"



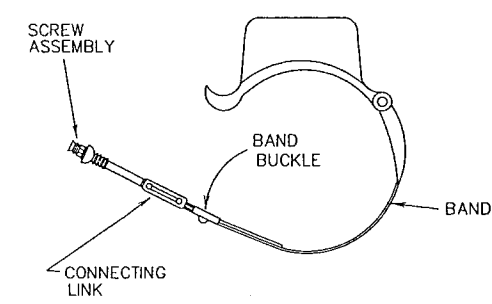
PEDESTRIAN PUSHBUTTON  
SIGN DETAILS



PEDESTRIAN SIGNAL HEAD MOUNTING  
FOR ONE PEDESTRIAN SIGNAL HEAD  
152A



PEDESTRIAN SIGNAL HEAD MOUNTING  
FOR TWO PEDESTRIAN SIGNAL HEADS  
143C



TYPE 1 CLAMP

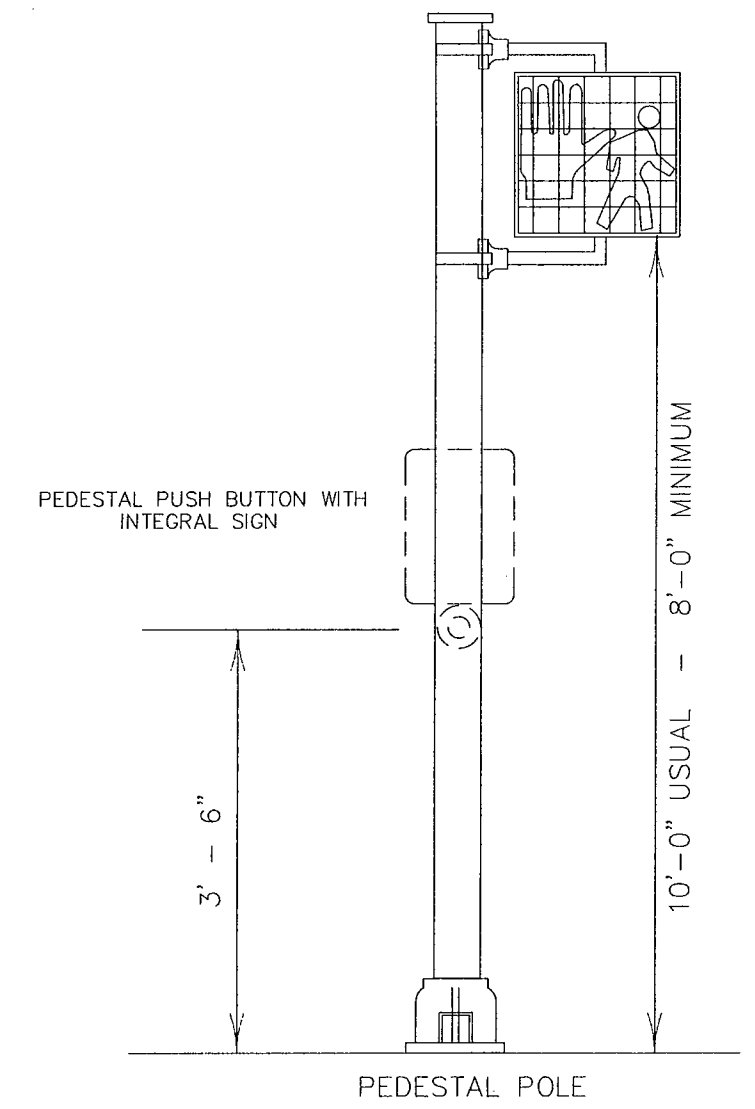
NOTE: CLAM SHELL MOUNTING HARDWARE MAY BE USED INSTEAD OF MOUNTING HARDWARE SHOWN ABOVE, AS APPROVED BY THE ENGINEER. ICC P/N 4805 OR McCAIN QUICKMOUNT OR APPROVED EQUAL.

NOTES:

1. PEDESTRIAN SIGNAL HEADS SHALL BE MOUNTED WITH TYPE 1 CLAMPS AND APPROPRIATE TUBING.
2. ALL PEDESTRIAN SIGNAL HEADS SHALL BE INSTALLED ON THE AWAY-FROM-TRAFFIC SIDE OF THE PEDESTAL OR MAST ARM POLE.
3. ALL WIRING FOR PEDESTRIAN SIGNALS SHALL BE TOTALLY ENCLOSED WITHIN THE SIGNAL MOUNTING HARDWARE.
4. ALL PEDESTRIAN SIGNAL HEADS AND PUSH BUTTON SIGNS SHALL DISPLAY THE SYMBOLIZED MESSAGES SHOWN ABOVE.

NOTE:

THE POLE ON THIS DRAWING IS SHOWN AS AN EXAMPLE ONLY. POLES OF SIMILAR DESIGN FOR ANY CROSS SECTION WHICH MEET THE SPECIFICATIONS AND REQUIREMENTS SHOWN ON THESE DRAWINGS AND ARE APPROVED BY THE ENGINEER WILL BE DEEMED ACCEPTABLE.



ALTERNATIVE MOUNTING METHOD revised 12-92

PEDESTRIAN SIGNAL HEAD IDENTIFICATION

DALLAS DISTRICT STANDARD				
FED. RD. DIV. NO.	FEDERAL AID PROJECT NO.		SHEET NO.	
6	CM 97 (449)		51	
STATE	STATE DIST.	COUNTY		
TEXAS	DALLAS	DALLAS		
CONTR.	SECT.	JOB	HIGHWAY NO.	
8050	18	034	BELT LINE	