

GENERAL NOTES

FOR TYPE III BARRICADES

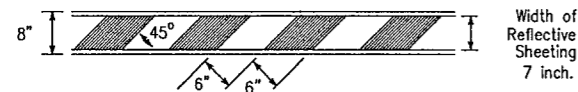
Type III Barricades are to be used at each end of construction projects closed to all traffic.
 CK: Barricades extending across a roadway should have stripes that slope downward in the direction toward which traffic must turn in detouring. When both right and left turns are provided for, the chevron striping may slope downward in both directions from the center of the barricade.
 Striping of rails, for the right side of the roadway, should slope downward to the left. For the left side of the roadway, striping should slope to the right.
 Identification markings may be shown only on back side of barricade rails. Maximum height of letters shall be 1 inch.
 Barricades shall not be placed parallel to traffic unless an adequate clear zone is provided (see BC(1)).

Barricades shall be made using pre-qualified materials. A list of compliant products and their sources may be obtained by writing or faxing:

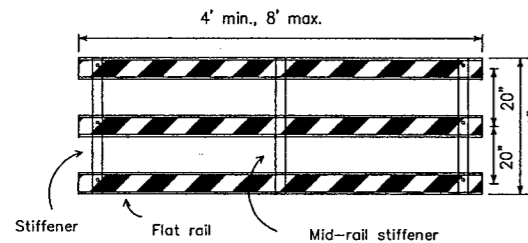
Standards Engineer
 Traffic Operations Division - TE
 Texas Department of Transportation
 125 East 11th Street
 Austin, Texas 78701-2483
 Phone (512) 416-3335
 Fax (512) 416-3161
 E-mail TRF-STANDARD@mailgw.dot.state.tx.us

Barricades shall NOT be used as a sign support.

TYPICAL STRIPING DETAIL FOR BARRICADE RAIL

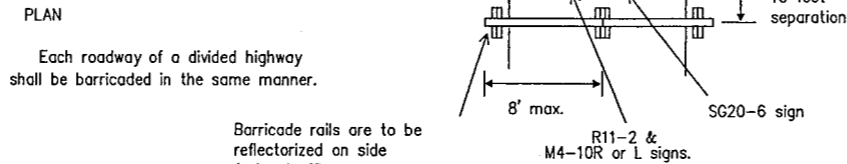
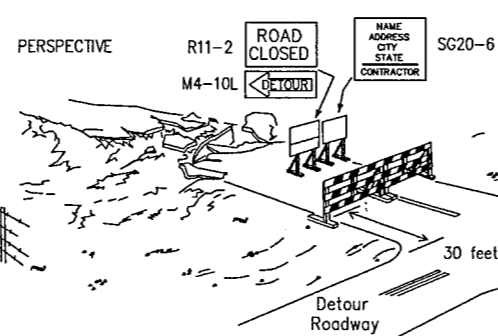


TYPICAL PANEL DETAIL FOR SKID OR POST TYPE BARRICADES



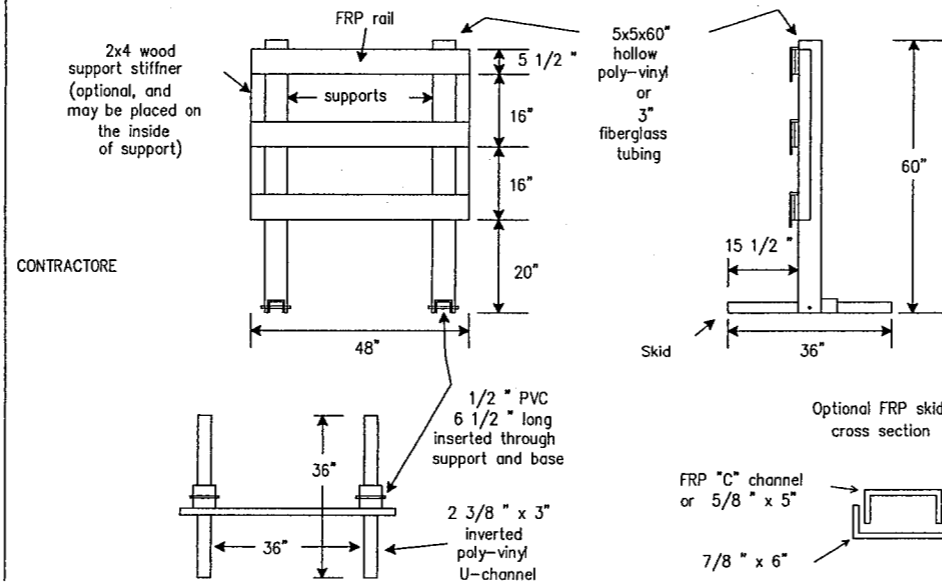
Stiffener may be inside or outside of support.

* For dimensions of components refer to TxDOT approved products list.

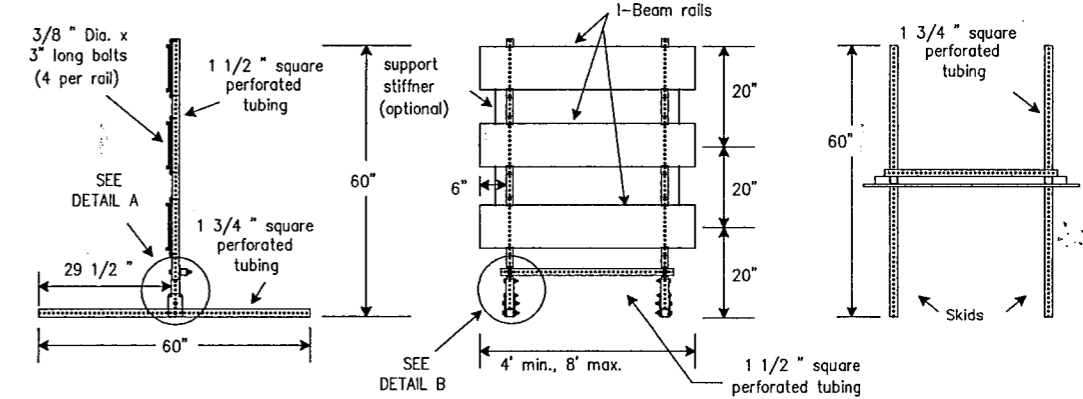


- 1). R11-2 and M4-10 signs should be mounted on independent supports at 7 foot mounting height in center of roadway.
- 2). Advance signing, including construction warning signs, and detour signing shall be as specified elsewhere in the plans.

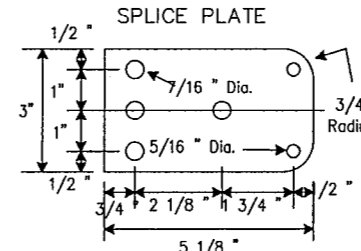
PLASTIC/FIBERGLASS TYPE III BARRICADE OPTION



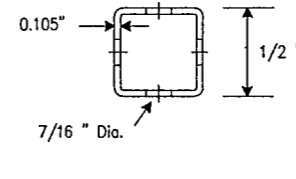
PERFORATED STEEL/WOOD/PLASTIC TYPE III BARRICADE OPTION



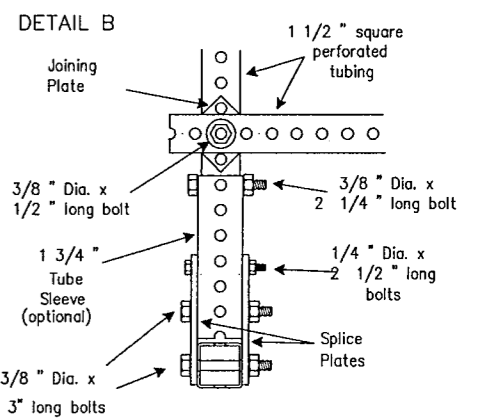
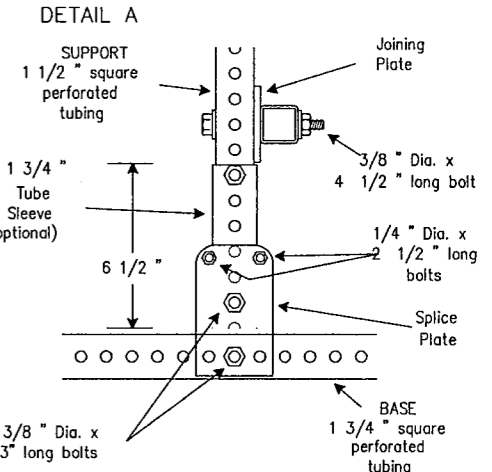
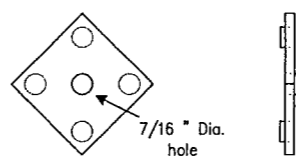
NOTE: If flat rails are used, refer to Wood/Plastic Option for vertical placement of rails



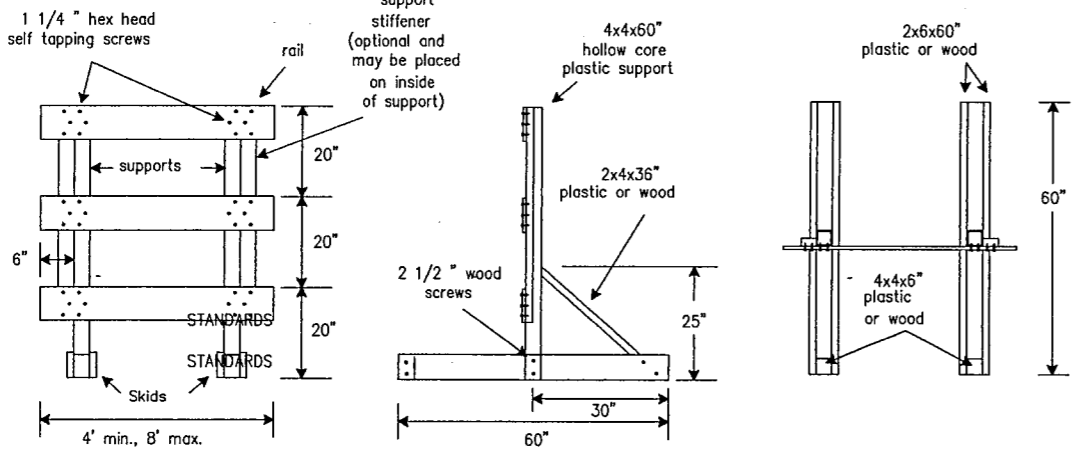
1 1/2" PERFORATED SQUARE STEEL TUBE



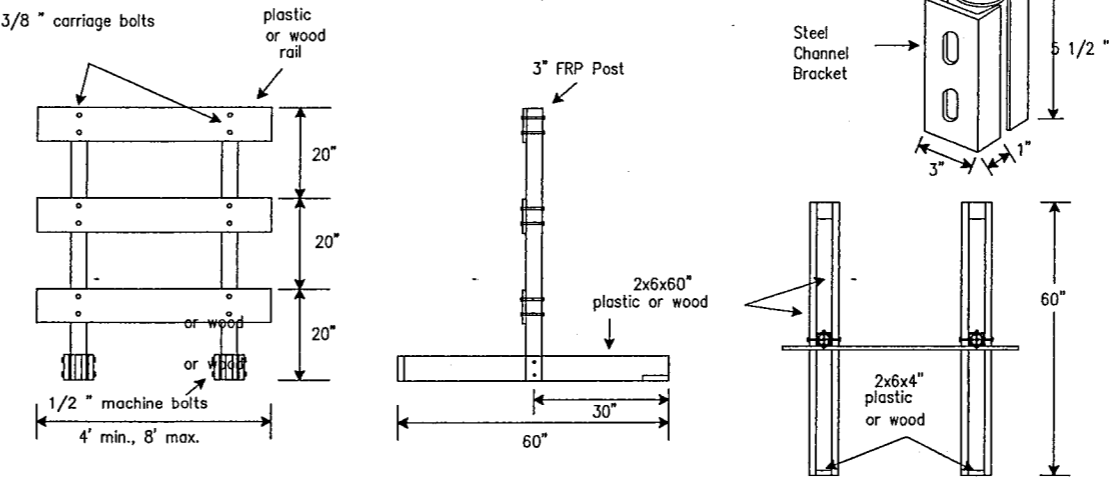
JOINING PLATE



WOOD/PLASTIC TYPE III BARRICADE OPTION



WOOD/PLASTIC/FIBERGLASS TYPE III BARRICADE OPTION



DISCLAIMER
 The use of this standard is governed by the "Texas Engineering Practice Act". No warranty of any kind is made by TxDOT for any purpose whatsoever. TxDOT assumes no responsibility for the conversion of this standard to other formats or for incorrect results or damages resulting from its use.

DN:	1
CK:	2
DW:	3
CK:	4

STANDARD PLANS
 TEXAS DEPARTMENT OF TRANSPORTATION
 Traffic Operations Division

BARRICADE AND CONSTRUCTION STANDARDS

BARRICADES (SKID MOUNT TYPE) **BC(2)-98**

REVISED	DATE	BY	CHKD	APP'D	REASON
1	12/15/98

STATE	FEDERAL AID PROJECT	SHEET
DALLAS	CM 97 (449)	63
COUNTY	CONTROL	SECTION
DALLAS	8050	18
JOB	INVENTORY	
034	BELT LINE	