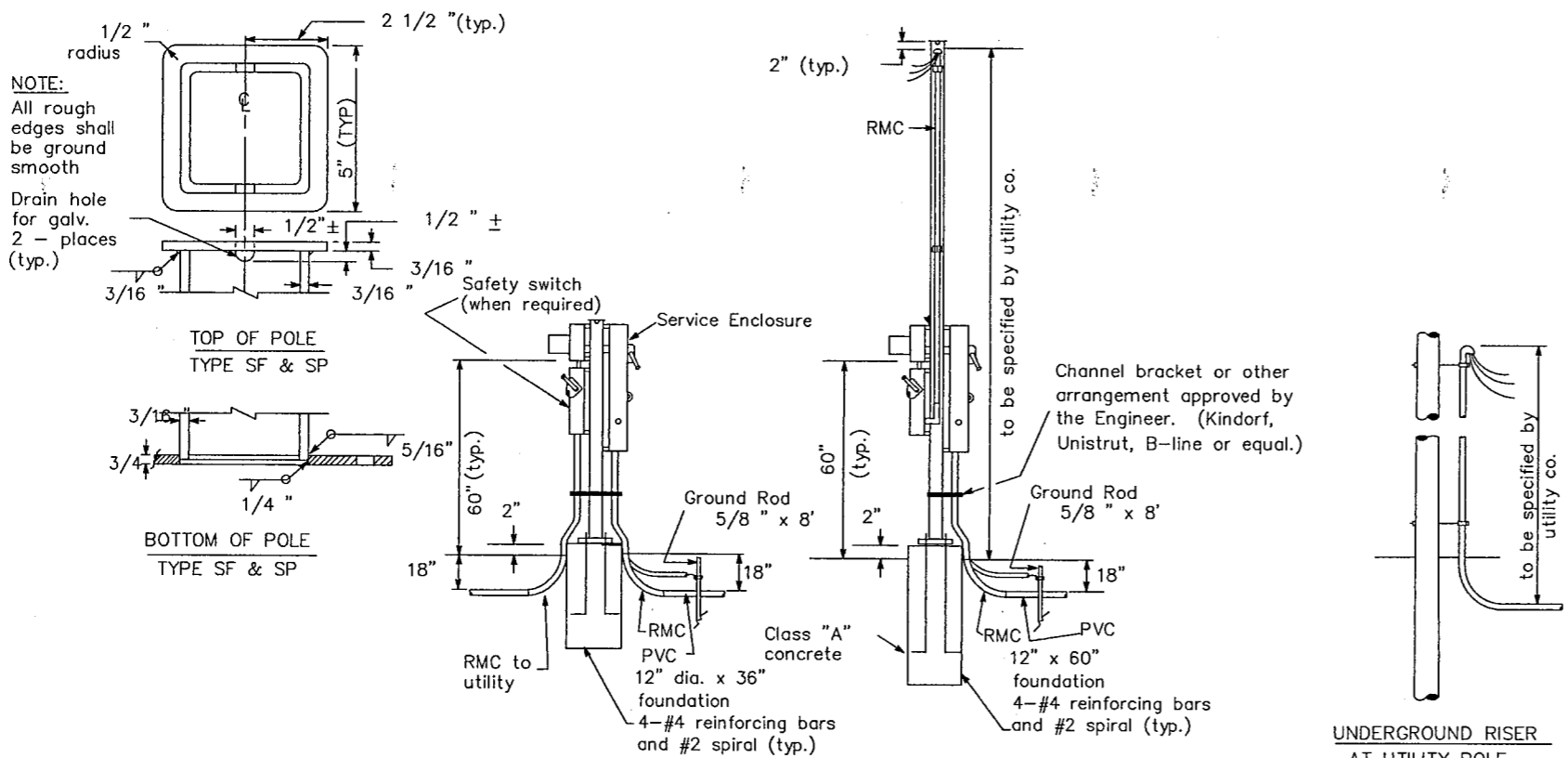


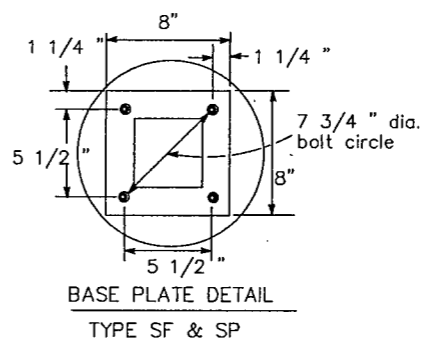
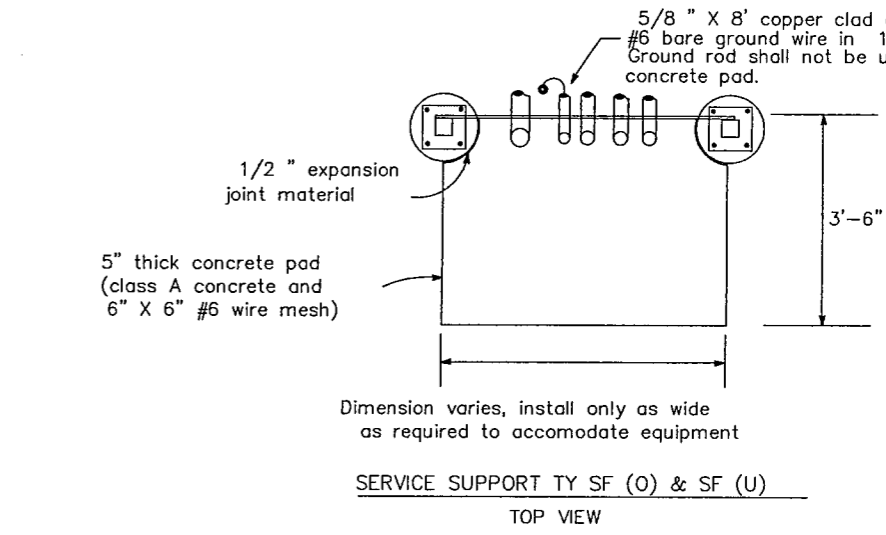
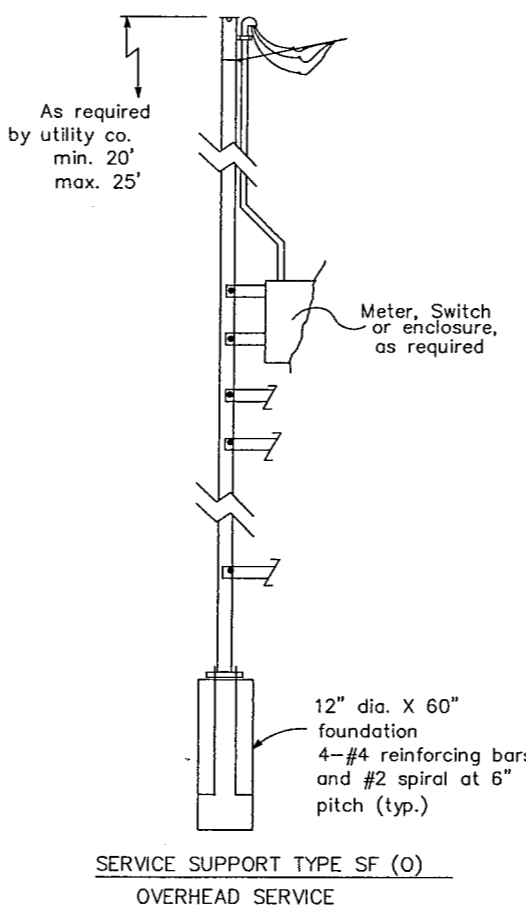
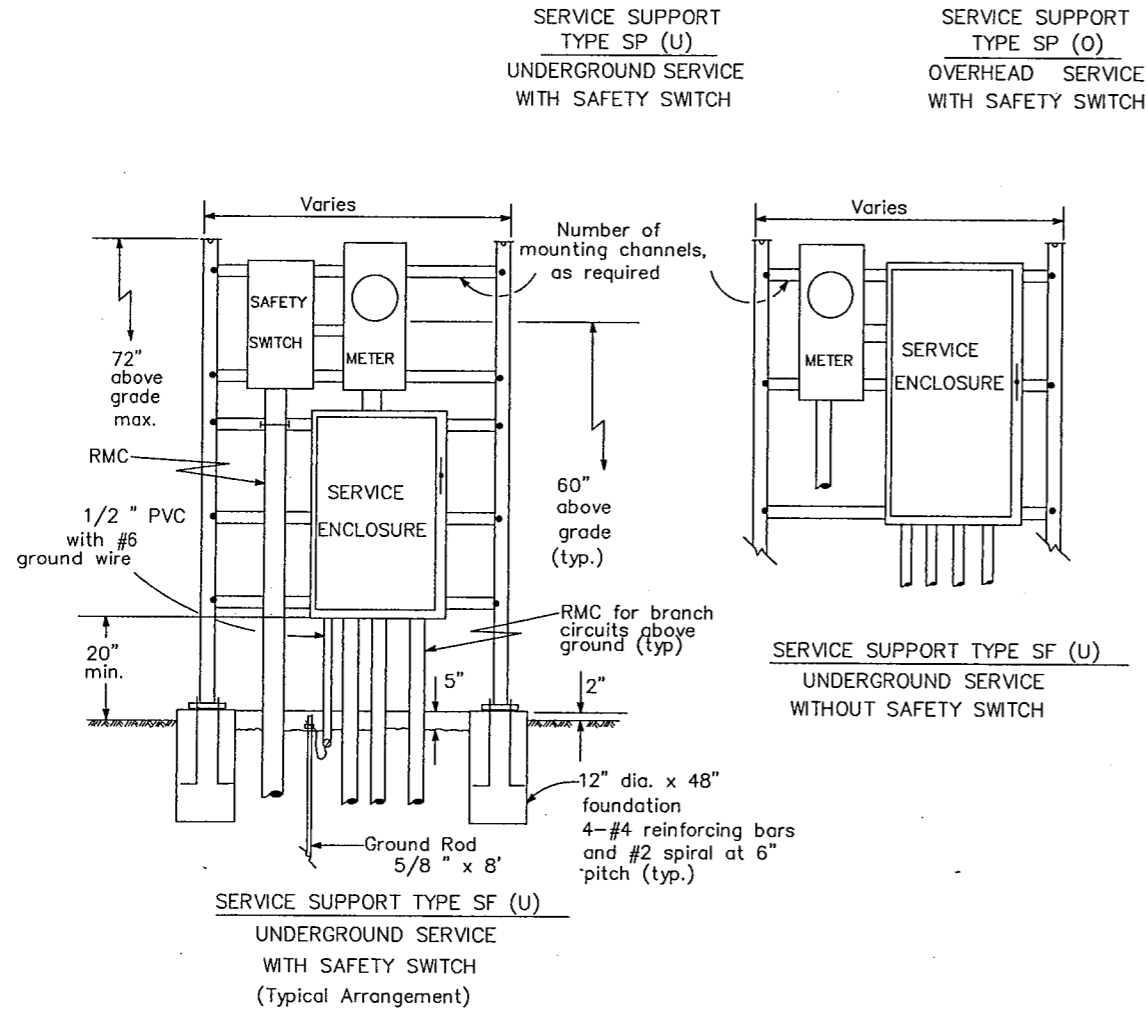
DISCLAIMER
The use of this standard is governed by the "Texas Engineering Practice Act". No warranty of any kind is made by TxDOT for any purpose whatsoever. TxDOT assumes no responsibility for the conversion of this standard to other formats or for incorrect results or damages resulting from its use.

LEVELS DISPLAYED
1 2 3 4 5 6 7 8 9 10 11 12 13 14 15 16
DATE: 01/11/92
DN: LR
CK: CW
DW: DN
CK: MT
ACC: d58hp1c/ust/d580504
FILE: 534151637561940112434445464748495051525354555657585960616263



- NOTES:
1. Support type SP and SF: Fabricated from 4" x 4" x 3/16" square structural tubing, ASTM A500 Grade A or G or equal. Base plate shall be 3/4" plate, ASTM A36 or equal. All equipment and conduit shall be mounted on galvanized channel strut, 1 1/2" x 1 5/8" x 12 gauge galvanized steel channel (Unistrut, Kindorf, B-line or equal) clamped with channel hardware, bolted or welded to vertical member as approved by the Engineer.
 2. Paint end of all channels with zinc-rich paint.
 3. All Steel Poles (SP and SF) shall be hot-dip galvanized after fabrication. Poles for overhead service shall be fitted with eyebolt or similar fitting, as approved by the utility company, for attachment of service drop to the pole.
 4. All conduit and conductors attached to the electrical service and within 12 inches of the electrical service will not be paid for directly, but shall be subsidiary to the electrical service. All conduit and conductors from the utility company pole to the point 12 inches from the electrical service, including conduit and conductors required for the utility pole riser when furnished by the Contractor, will be paid for separately.
 5. All mounting hardware and installation details of services shall be in accordance with utility company specifications.
 6. Anchor bolts for underground service supports shall be 3/4" x 18" x 4" (dia. x length x hook length). Anchor bolts for overhead services shall be 3/4" x 56" x 4". Anchor bolts shall be provided with leveling nuts.
 7. Conduit for grounding electrode conductor (ground rod wire) shall be 1/2" PVC all other conduit on electrical services shall be rigid metal conduit. Service entrance conduit size shall be as shown elsewhere. Conduit for branch circuit entry to enclosure shall be the same size as that shown on the layout sheets for branch circuit conduit. Rigid metal conduit shall extend to the rigid metal elbow and then be coupled to the type conduit shown on the layout for that particular branch circuit. RMC shall have grounding bushings in enclosures.
 8. If pole is painted, each separate painted piece shall have a bonding jumper attached to a drill and tapped hole.

UNDERGROUND RISER AT UTILITY POLE (for underground service)



STANDARD PLANS
TEXAS DEPARTMENT OF TRANSPORTATION
Traffic Operations Division

ELECTRICAL DETAILS—
SERVICE SUPPORT
TYPES SF & SP

ED(5)-98

REVISIONS	DATE	BY	CHKD	APP'D	NO.
10-93	DALLAS	6		CM 97 (449)	77
4-98	DALLAS	8050	18	034	BELT LINE