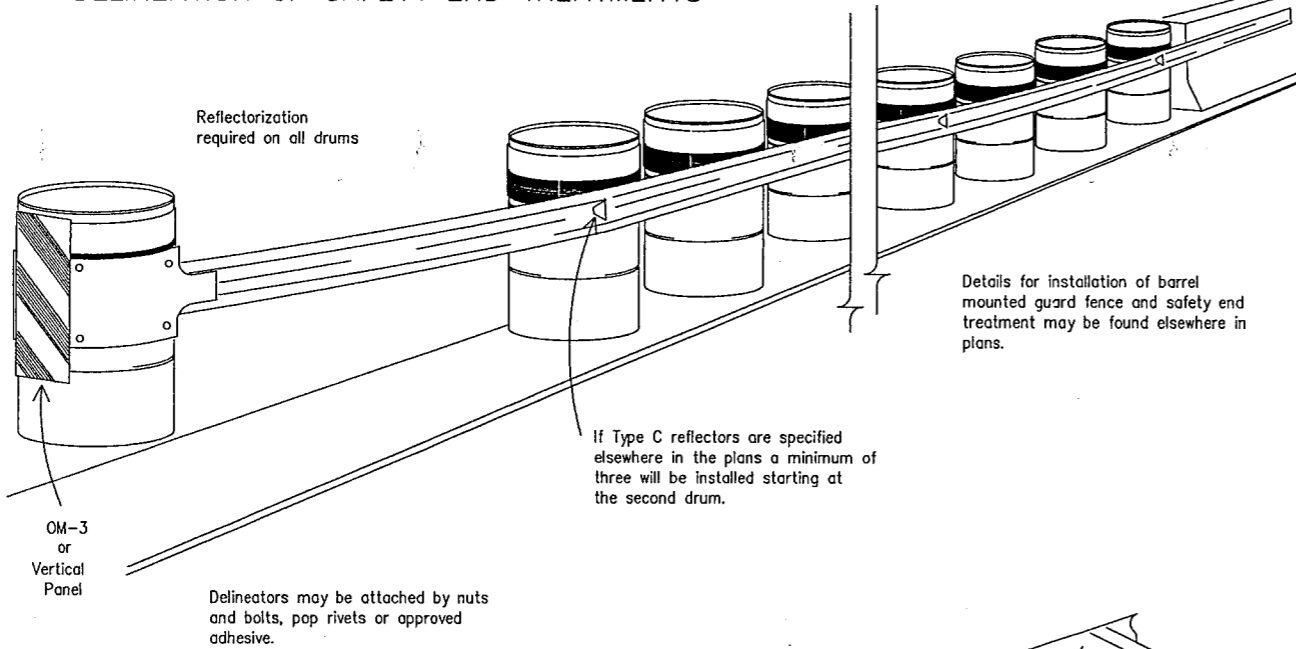
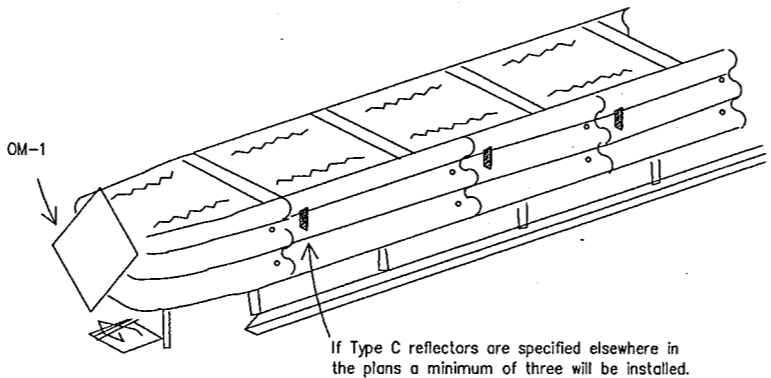


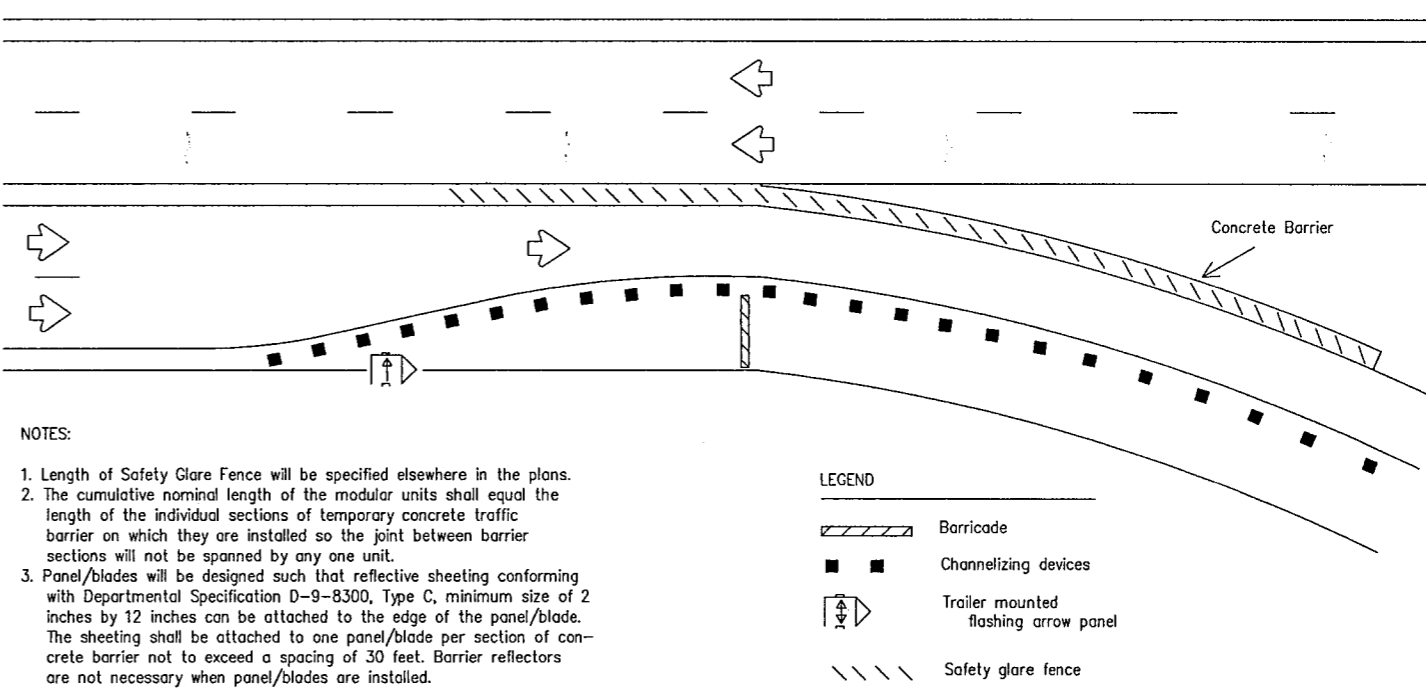
DELINEATION OF SAFETY END TREATMENTS



DELINEATION	APPROACHING TRAFFIC	
	BOTH SIDES	ONE SIDE
	OM-1	OM-3 or Vertical Panel



BARRIER DELINEATION WITH SAFETY GLARE FENCE



NOTES:

- Length of Safety Glare Fence will be specified elsewhere in the plans.
- The cumulative nominal length of the modular units shall equal the length of the individual sections of temporary concrete traffic barrier on which they are installed so the joint between barrier sections will not be spanned by any one unit.
- Panel/blades will be designed such that reflective sheeting conforming with Departmental Specification D-9-8300, Type C, minimum size of 2 inches by 12 inches can be attached to the edge of the panel/blade. The sheeting shall be attached to one panel/blade per section of concrete barrier not to exceed a spacing of 30 feet. Barrier reflectors are not necessary when panel/blades are installed.

REFLECTORS FOR CONCRETE TRAFFIC BARRIER, BARREL MOUNTED GUARD FENCE, AND ATTENUATORS

Type C reflectors may be installed using pop rivets, nuts and bolts, construction adhesive or butyl rubber adhesive.

Type C reflectors shall be prequalified and shall conform to the color and reflectivity requirements of Specification D-9-8600.

Color of Type C reflector will be the same as the nearest edge line, gore pavement marking or as directed by the Engineer.

Unless stated elsewhere in the plans, reflectorization of metal drums, delineation and reflectors shown on this standard shall be considered subsidiary to the various bid items.

PREQUALIFICATION PROCEDURES ARE OBTAINED FROM:
 MATERIALS AND TESTS DIVISION
 TEXAS DEPARTMENT OF TRANSPORTATION (TxDOT)
 125 EAST 11th STREET
 AUSTIN, TX 78701-2483

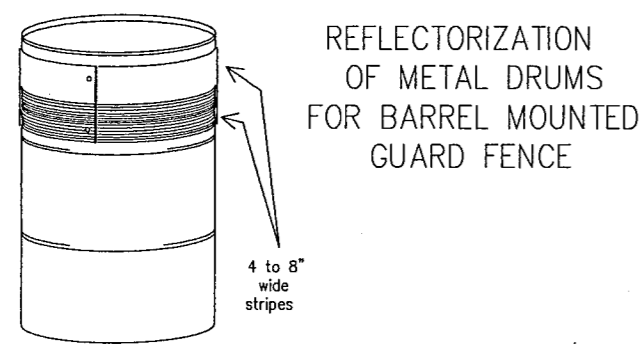
SPECIFICATION REFERENCE TABLE

MATERIALS AND TESTS DIVISION SPECIFICATIONS	
EPOXY	D-9-6100
BITUMINOUS ADHESIVE	D-9-6130
ALUMINUM SIGN BLANKS	D-9-7110
FLAT SURFACE REFLECTIVE SHEETING, TYPE C (HIGH SPECIFIC INTENSITY)	D-9-8300
DELINEATOR AND OBJECT MARKER	D-9-8600

DISCLAIMER
 The use of this standard is governed by the "Texas Engineering Practice Act". No warranty of any kind is made by TxDOT for any purpose whatsoever. TxDOT assumes no responsibility for the conversion of this standard to other formats or for incorrect results or damages resulting from its use.

LEVELS DISPLAYED
 1 2 3 4 5 6 7 8 9 10 11 12 13 14 15 16
 17 18 19 20 21 22 23 24 25 26 27 28 29 30 31 32
 33 34 35 36 37 38 39 40 41 42 43 44 45 46 47 48
 49 50 51 52 53 54 55 56 57 58 59 60 61 62 63

DATE: _____
 AACC: _____
 FILL: _____

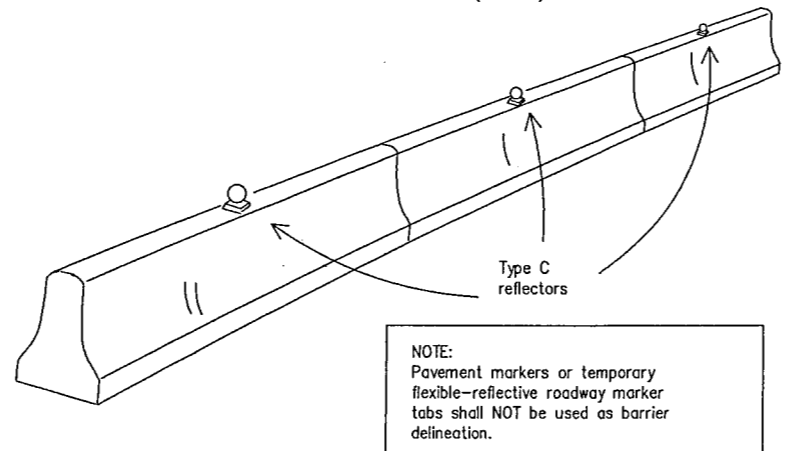


The following specification is intended to detail the reflectorization of metal drums used to support barrel mounted guard fence. Metal drums shall not be used as a standalone channelizing device or sign support.

Markings on drums shall be horizontal, circumferential, reflectorized orange and reflectorized white stripes, 4 to 8 inches wide. The first reflectorized stripe should start within four inches of the top of the drum. There shall be at least one orange and one white stripe on each drum. If there is a non-reflectorized space between the horizontal orange and white stripes, it shall be no more than 2 inches wide. Reflectorized material shall conform with Specification D-9-8300 Type C (High Specific Intensity).

All drums on project will be orange.

CONCRETE TRAFFIC BARRIER (CTB)



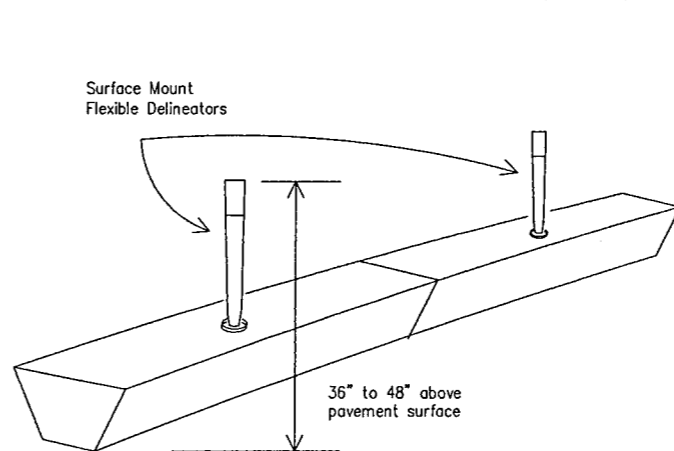
Barrier reflectors will be installed only on barriers designated for reflectorization as required elsewhere in the plans.

Reflectors should be mounted one reflector per section of barrier, preferably in the center.

Maximum spacing of reflectors is 40 feet for CTB and 20 feet for LPCB. Mount reflectors to barrier with construction adhesive or butyl rubber adhesive.

Color of barrier reflectors will conform to the Texas "Manual on Uniform Traffic Control Devices", (TMUTCD).

LOW PROFILE CONCRETE BARRIER (LPCB)



STANDARD PLANS
 TEXAS DEPARTMENT OF TRANSPORTATION
 Traffic Operations Division

WORK ZONE
 BARRIER DELINEATION

WZ(BD)-97

ORG DRAW DATE: APRIL 1992	DR-LR/MT DR:-	DR-DN	CR-MT	NEG NO:
8-95	DALLAS 6	CM 97 (449)		
1-97	DALLAS	B050 18	034	BELT LINE