

- GENERAL NOTES:
- Channelizing devices on flexible supports shall be used at locations detailed elsewhere in the plans. These devices shall conform to the Texas MUTCD.
 - Channelizing devices on flexible supports may be used in work zone areas where channelizing devices are frequently impacted by errant vehicles. Work zone channelizing devices illustrated on this sheet may be installed in close proximity to traffic and are suitable for use on high or low speed roadways. Spacing and placement shall be uniform and in accordance with the Texas MUTCD.
 - The contractor shall maintain devices in a clean condition and replace damaged, non-reflective, faded, or broken devices and bases as necessary.
 - Devices shall be fabricated to withstand repeated impacts with minimal maintenance to devices and damage to vehicles. When devices are impacted, they should not adversely affect worker or vehicle safety.
 - Devices shall be erected on a fixed, portable, or driveable base as approved by the Engineer.
 - Portable bases shall be fabricated from a flexible material such as virgin and/or recycled rubber. Approximate weight of portable bases should be 35 pounds.
 - Fixed bases may be surface mount or driveable type.
 - Pavement surfaces shall be prepared in a manner that will insure proper bonding of adhesives and surface mount bases to the pavement surfaces. Adhesives shall be prepared and applied as per manufacturer's recommendations.
 - Application and removal of devices shall not cause detrimental effects to the final pavement surfaces, including pavement surface discoloration or surface integrity. Driveable bases shall not be permitted on final pavement surfaces. All application and removal procedures of fixed bases shall be approved by the Engineer.
 - These devices shall not be paid for directly but shall be considered subsidiary to the item "Barricades, Signs, and Traffic Handling."

PREQUALIFICATION PROCEDURES MAY BE OBTAINED BY WRITING:

TRAFFIC OPERATIONS DIVISION
 TEXAS DEPARTMENT OF TRANSPORTATION (TxDOT)
 125 EAST 11th STREET
 AUSTIN, TX 78701-2483

SPECIFICATION REFERENCE TABLE
 MATERIALS AND TEST DIVISION SPECIFICATIONS

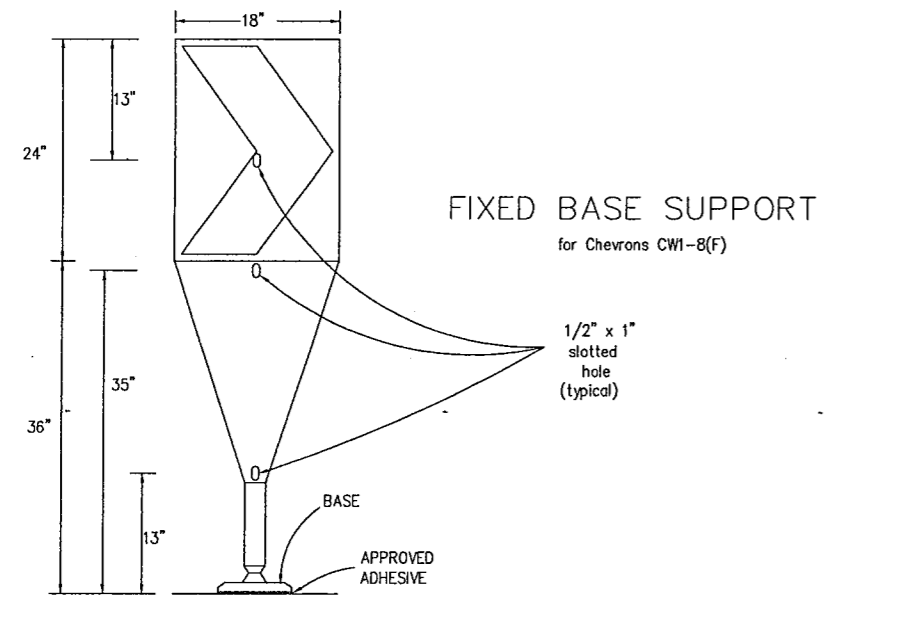
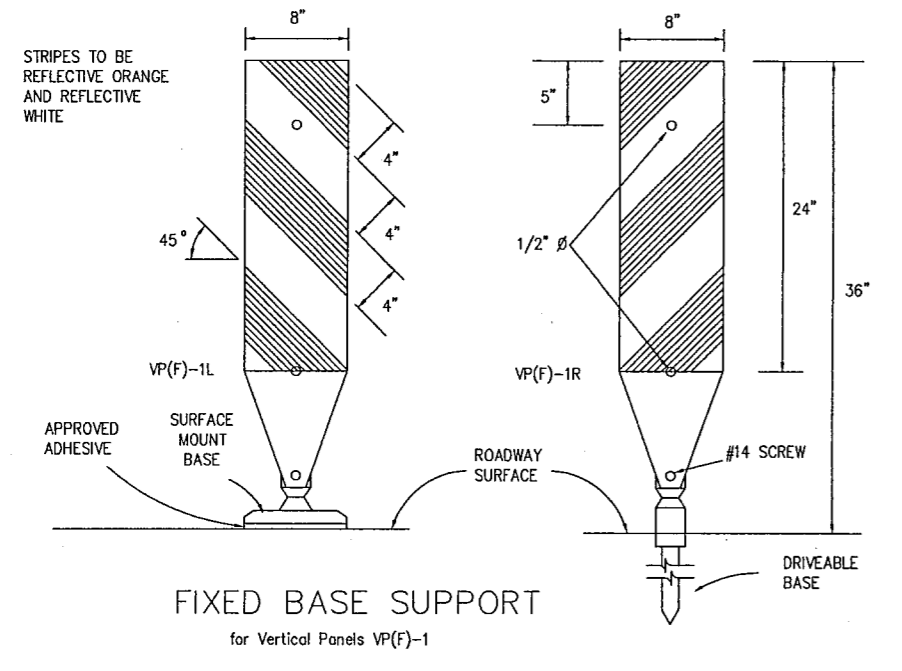
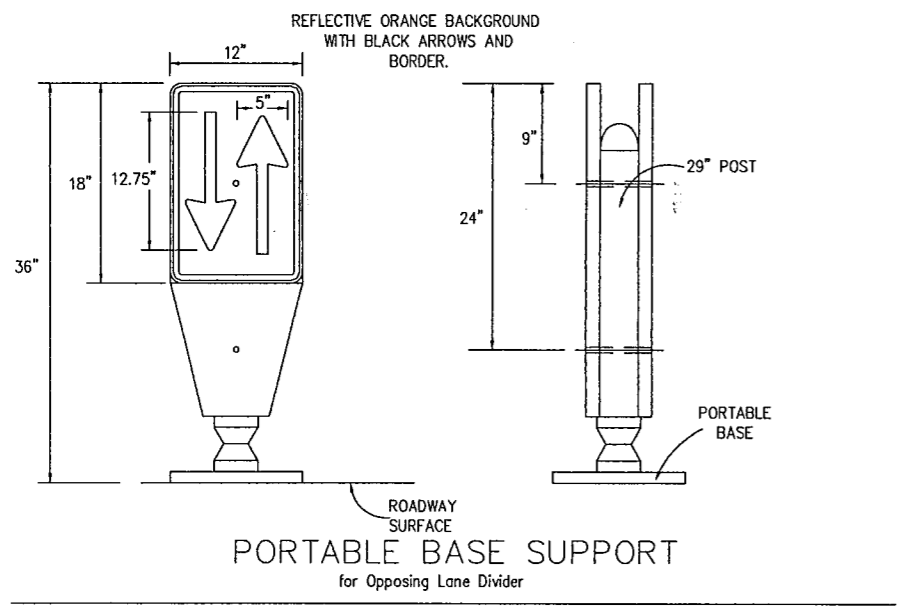
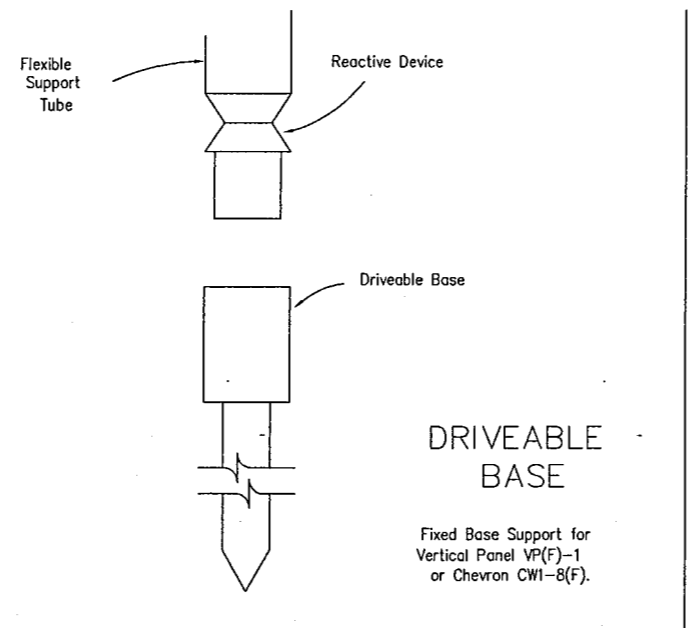
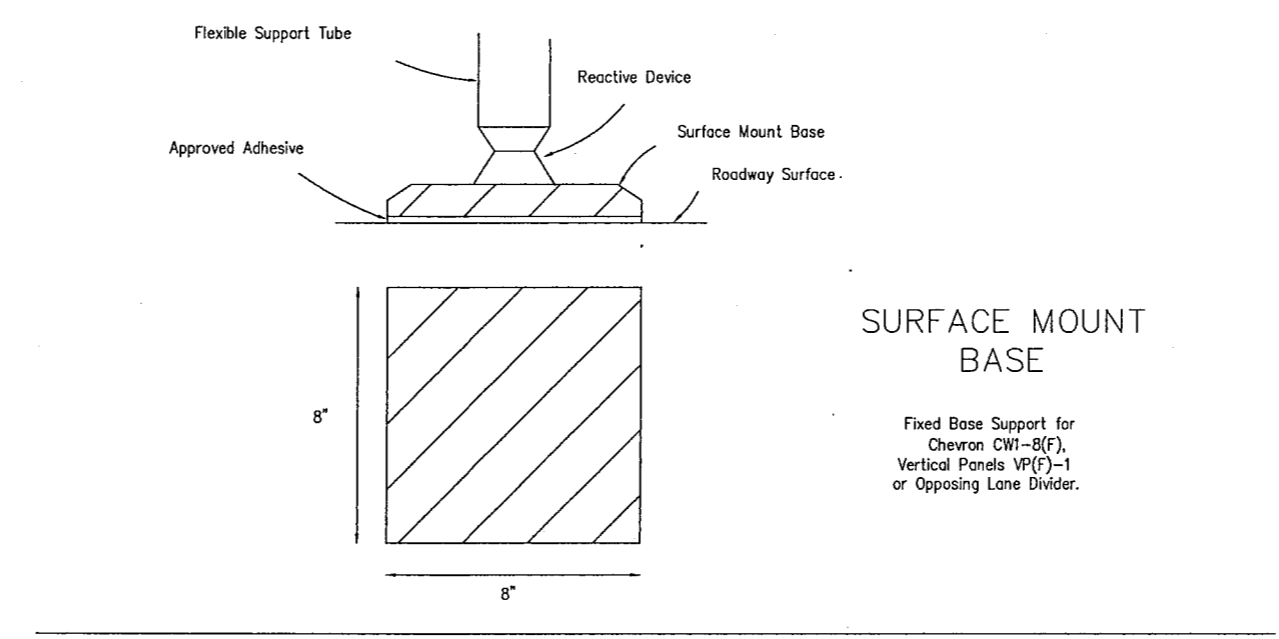
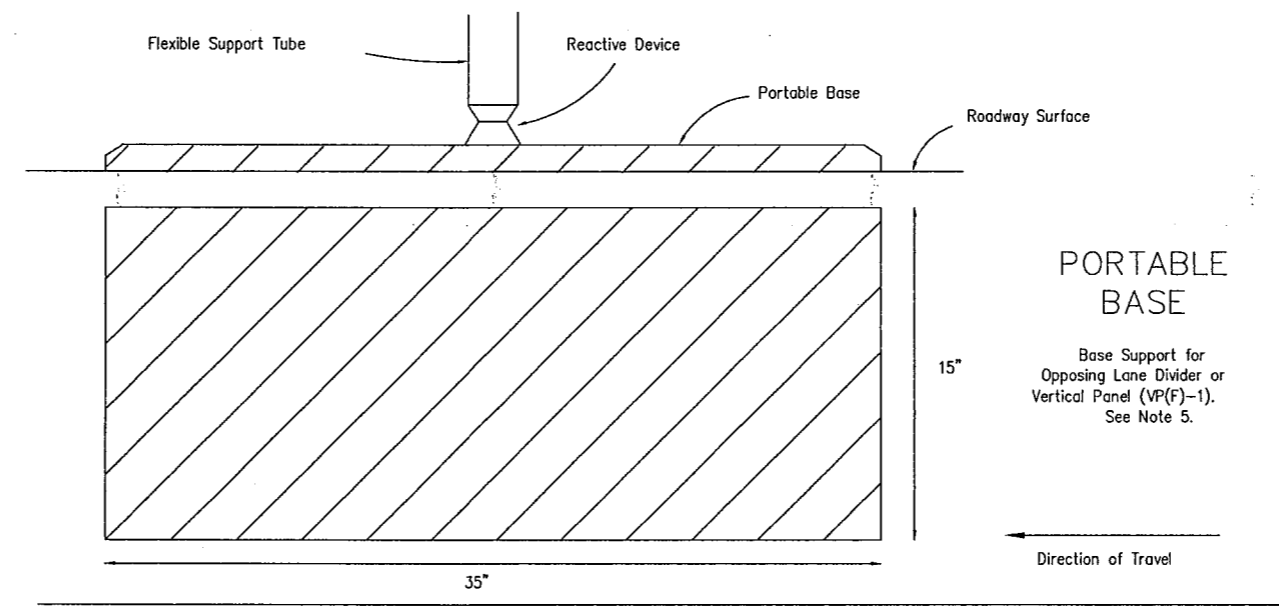
FLAT SURFACE REFLECTIVE SHEETING, TYPE C
 (HIGH SPECIFIC INTENSITY) D-9-8300

STANDARD PLANS
 TEXAS DEPARTMENT OF TRANSPORTATION
Traffic Operations Division

**WORK ZONE
 CHANNELIZING DEVICES ON
 FLEXIBLE SUPPORTS**

WZ(CD)-94

ORIG. DATE:	Jan 1992	DN-LR	OC-	DN-DN	OC-	NEG. NO.:
9-94						
STATE DISTRICT	FEDERAL AID PROJ. NO.	SHEET				
DALLAS	6	CM 97 (449)	82			
COUNTY	SECTION	JOB	INSTR.			
DALLAS	8050 18	034	BELT LINE			



DN: LR
 CK: CW
 DW: DN
 CK: MT

LEVELS DISPLAYED

1 2 3 4 5 6 7 8 9 10 11 12 13 14 15 16 17 18 19 20 21 22 23 24 25 26 27 28 29 30 31 32 33 34 35 36 37 38 39 40 41 42 43 44 45 46 47 48 49 50 51 52 53 54 55 56 57 58 59 60 61 62 63

DA: ACC: FILE:

d58hp1c/usr/d580504