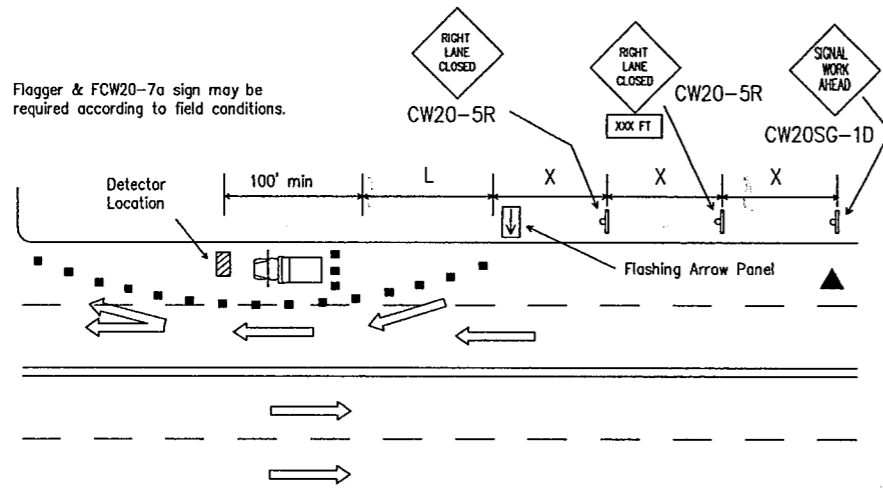


DISCLAIMER
The use of this standard is governed by the "Texas Engineering Practice Act". No warranty of any kind is made by TxDOT for any purpose whatsoever. TxDOT assumes no responsibility for the conversion of this standard to other formats or for incorrect results or damages resulting from its use.

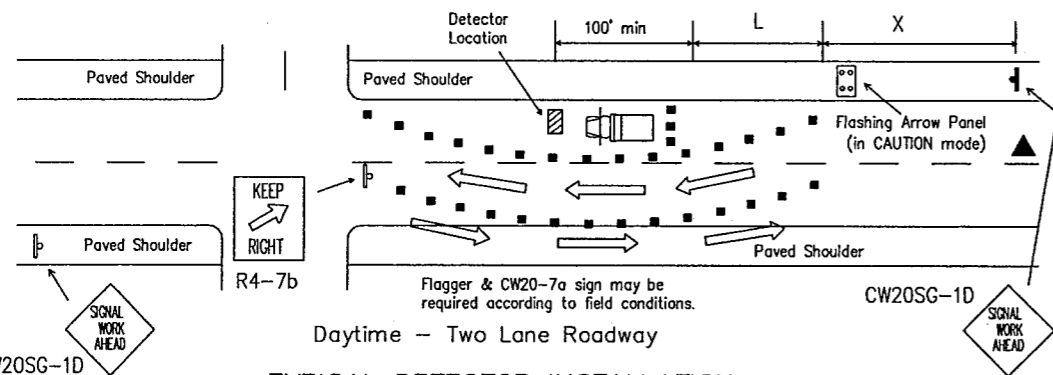
LEVELS DISPLAYED
1 2 3 4 5 6 7 8 9 10 11 12 13 14 15 16
DATE: 7/18/92
DW: DN
CK: MT
FILE: 8314151617181920212223242526272829303132
33343536373839404142434445464748
49505152535455565758596061626364



Posted Speed *	Formula	Minimum Desirable Taper Lengths **			Suggested Maximum Spacing of Device		Minimum Sign Spacing X Distance
		10' Offset	11' Offset	12' Offset	On a Taper	On a Tangent	
30	$L = \frac{WS^2}{60}$	150'	165'	180'	30'	60'-75'	120'
35		205'	225'	245'	35'	70'-90'	160'
40		265'	295'	320'	40'	80'-100'	240'
45		450'	495'	540'	45'	90'-110'	320'
50		500'	550'	600'	50'	100'-125'	400'
55	L=WS	550'	605'	660'	55'	110'-140'	500'
60		600'	660'	720'	60'	120'-150'	* 600'
65		650'	715'	780'	65'	130'-165'	* 700'
70		700'	770'	840'	70'	140'-175'	* 800'

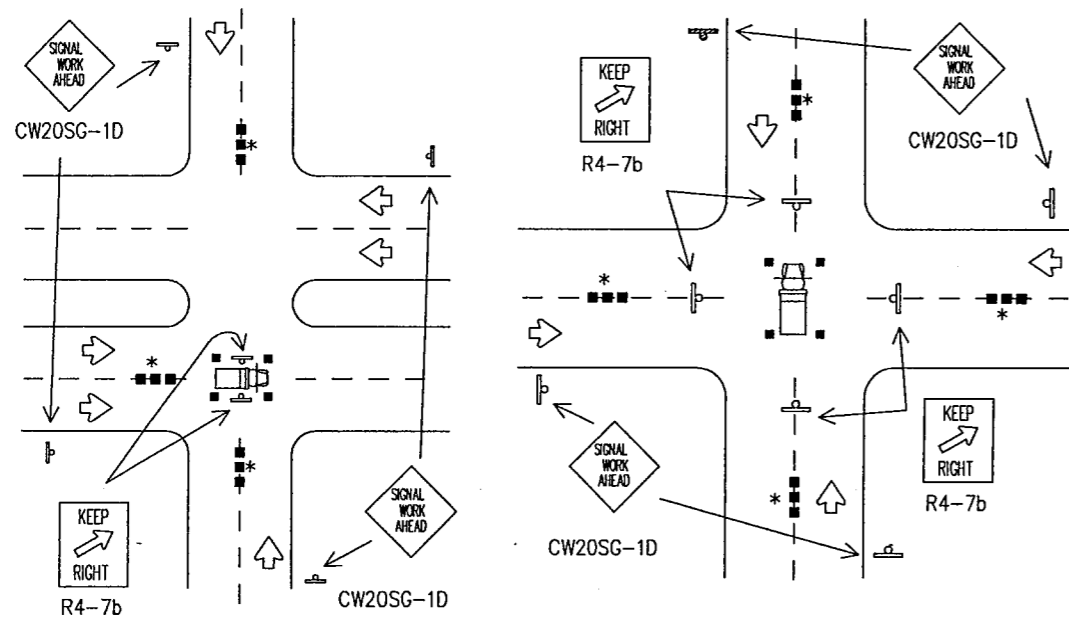
* Conventional Roads Only
** Taper lengths have been rounded off.
L=Length of Taper (FT.) W=Width of Offset (FT.) S=Posted Speed (MPH)

Daytime - Four Lane Roadway



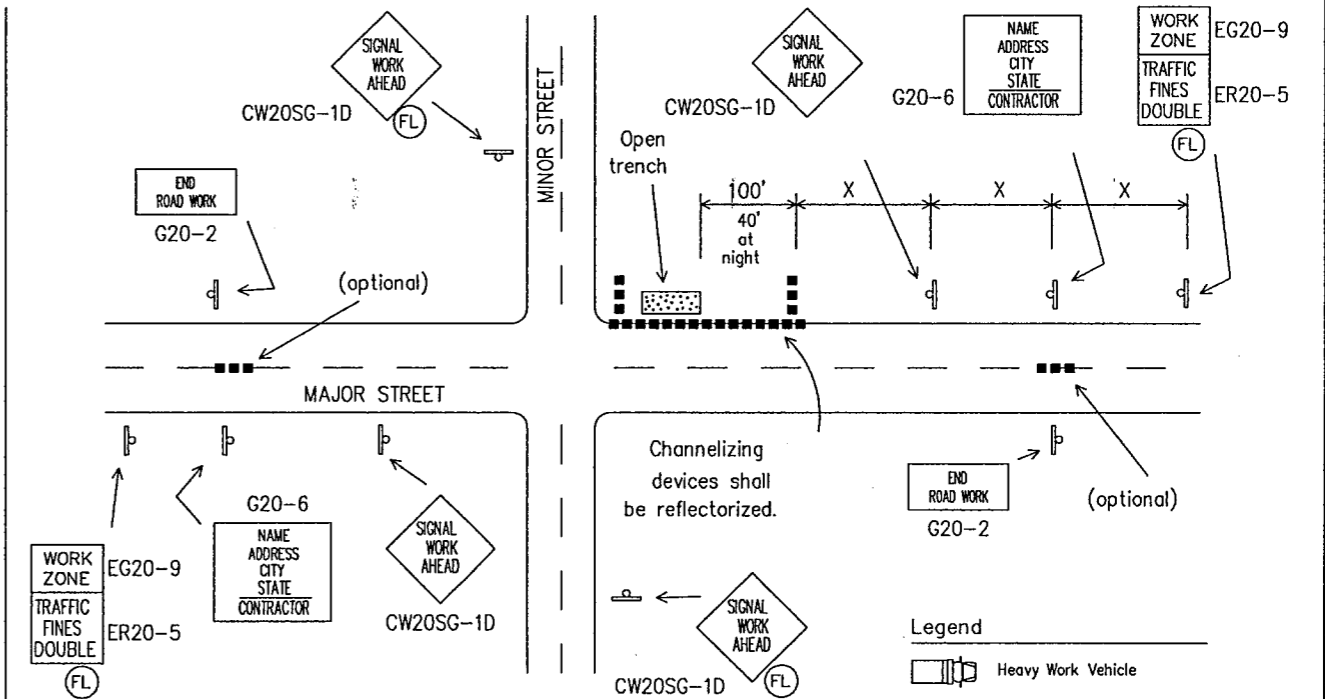
TYPICAL DETECTOR INSTALLATION
OR OTHER WORK OPERATIONS THAT ARE SHORT TERM OR SHORT DURATION

Nighttime Channelizing Devices shall be reflectorized.



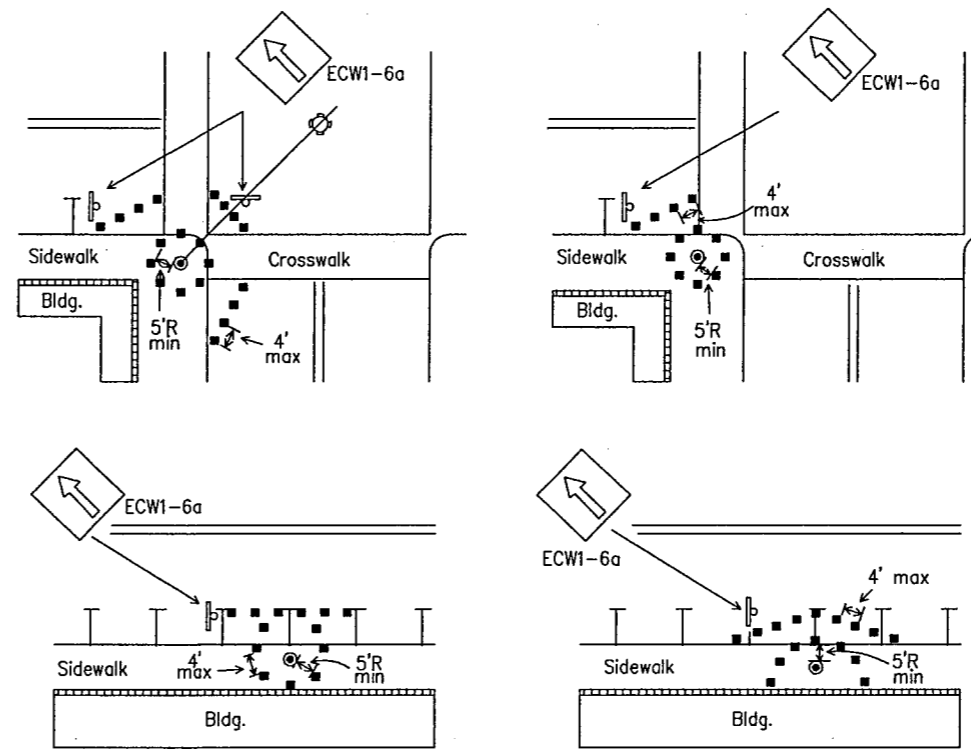
TYPICAL HANGING SIGNAL INSTALLATIONS
OR OTHER WORK OPERATIONS THAT ARE SHORT TERM OR SHORT DURATION

* Advance warning channelizing devices are optional.



TYPICAL ADVANCE SIGNING
FOR LONG TERM and INTERMEDIATE-TERM STATIONARY WORK OPERATIONS

Observe Warning Signs State Law (R20-3) may be required if called for elsewhere in the plans.
Location will be as directed by the Engineer.



Channelizing devices should not be placed closer than 5 foot radius (minimum) to signal poles.
Parking may be eliminated by placing channelizing devices in spaces.
If pedestrian walkways are blocked, refer to TMUTCD.

TYPICAL RESTRICTED PEDESTRIAN MOVEMENTS
FOR ALL WORK OPERATIONS REGARDLESS OF WORK DURATION

The arrow panel may be omitted when stated elsewhere in the plans.

Typical channelizing device is the 28" cone. Plastic drums or vertical panels may be used if approved by the Engineer. Metal drums shall NOT be used as a channelizing device or sign support.

For several closely adjoining projects, advance signing may not be required in advance of each intersection, but only in advance of the intersections at the project limits. See details elsewhere in the plans for advance signing requirements.

Advance signs shall be in place when signal construction operations are in progress. The contractor shall remove advance signs when no construction operations are underway. Obstructions or hazards at the work area shall be clearly marked and delineated at all times.

All holes, trenches or other hazardous areas shall be adequately protected by lights or other protective devices. Trenches shall be covered or surrounded with orange plastic construction fence as directed by the Engineer.

Flagger and FCW20-7a sign may be required according to field conditions. Vehicles parked in roadway shall be equipped with two strobes. High level flags at corners of vehicle may also be used. Work operations that require work vehicle in traveled way 20 minutes or less may use cones, high level flags and strobes as advance warning devices. Cones should only be placed around vehicle. Flaggers may be used on high speed rural intersections.

STANDARD PLANS
TEXAS DEPARTMENT OF TRANSPORTATION
Traffic Operations Division

TRAFFIC SIGNAL
INSTALLATION
TYPICAL DETAILS

SHEET 1 OF 2 WZ(BTS-1)-98

REVISION:	DATE:	DW: LR	CK: DTN	DR: DN	CK: GB	REV. NO.:
2-94	10-19-94					8-3
1-97	01-22-97					
2-98	02-19-98					
4-98	04-15-98					
STATE:	FEDERAL:	FEDERAL AID PROJECT:				SHEET:
DALLAS	6	CM 97 (449)				8-3
COUNTY:	CONTROL:	SECTION:	JOB:	HIGHWAY:		
DALLAS	8050	18	034	BELT LINE		

T16A