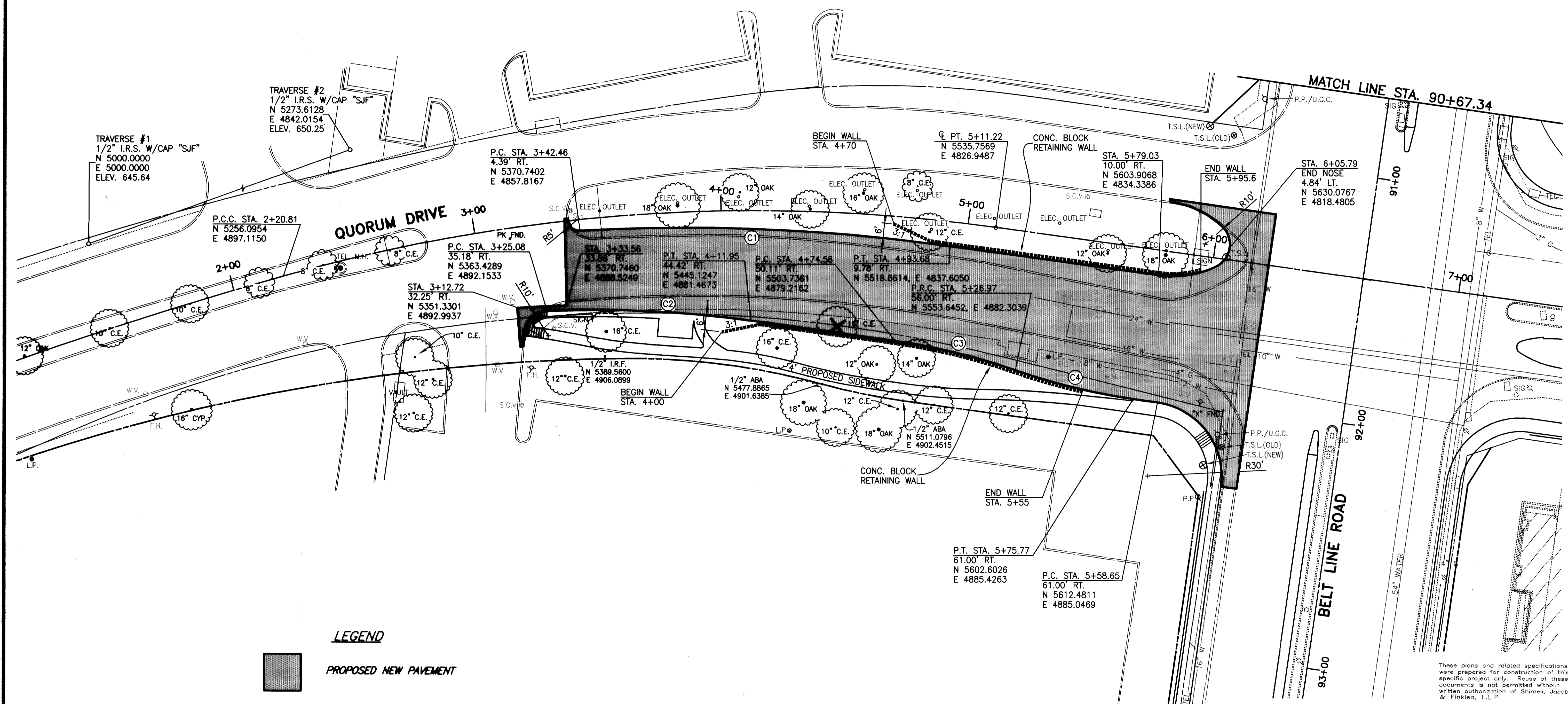
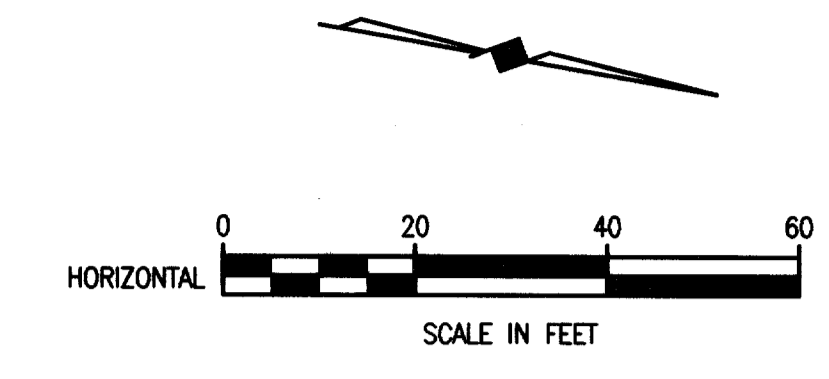


C1 CURVE DATA	C2 CURVE DATA	C3 CURVE DATA	C4 CURVE DATA	CENTER LINE CURVE DATA
Δ = 11°08'29"	Δ = 10°30'19"	Δ = 11°28'46"	Δ = 11°15'40"	Δ = 23°46'13"
R = 770.00'	R = 450.00'	R = 250.00'	R = 250.00'	R = 700.00'
T = 75.10'	T = 41.37'	T = 25.13'	T = 24.65'	T = 147.32'
L = 149.73'	L = 82.51'	L = 50.09'	L = 49.14'	L = 290.41'

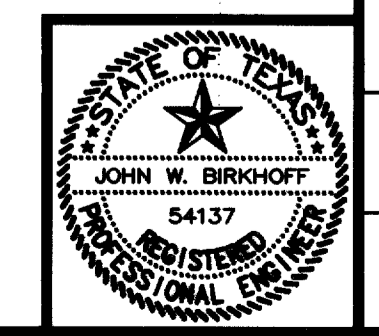


**LEGEND**

- PROPOSED NEW PAVEMENT
- BARRIER FREE RAMP
- TREE REMOVAL

BENCHMARK:  
 "□" CUT ON THE NORTH END OF A  
 CONCRETE RETAINING WALL ON THE EAST  
 SIDE OF QUORUM DRIVE AT THE NORTHWEST  
 CORNER OF THE MARTIOT HOTEL APPROX.  
 900' SOUTH OF THE INTERSECTION ON BELT  
 LINE AND QUORUM DRIVE.  
 ELEV. 649.13

THESE DOCUMENTS ARE FOR  
 BIDDING, CONSTRUCTION,  
 AND PERMIT PURPOSES.  
*John W. Birkhoff*  
 DATE: 6/9/00



<b>CITY OF ADDISON, TEXAS</b>			
<b>QUORUM DRIVE / BELT LINE ROAD</b>			
<b>PAVING PLAN</b>			
<b>SHIMEK, JACOBS &amp; FINKLEA, L.L.P.</b>			
CONSULTING ENGINEERS Dallas, Texas			
DESIGNED BY:	J.W.B.	PROJECT:	2000-131
DRAWN BY:	E.W.H.	DATE:	MAY 2000
SHEET NO.			1
OF 7 SHEETS			7

FF-9

REF: PAVEMENT-BAS  
 2000131-01.DWG  
 06/09/00 EWH

These plans and related specifications were prepared for construction of this specific project only. Reuse of these documents is not permitted without written authorization of Shimek, Jacobs & Finklea, L.L.P.