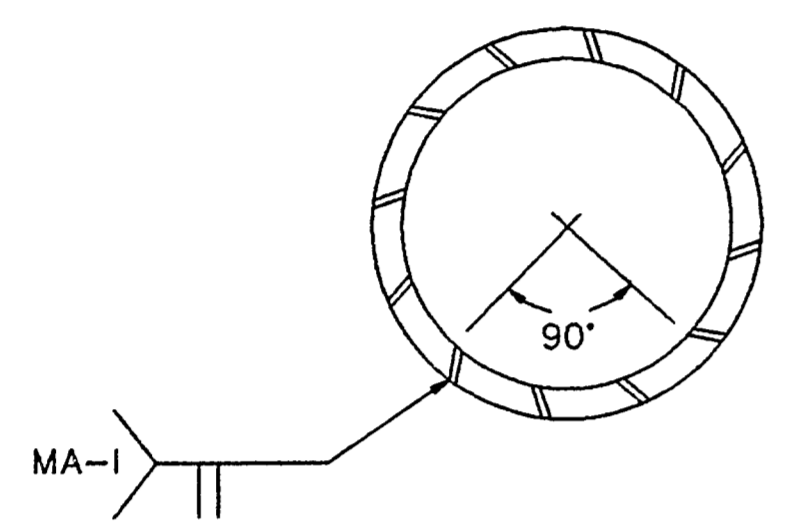
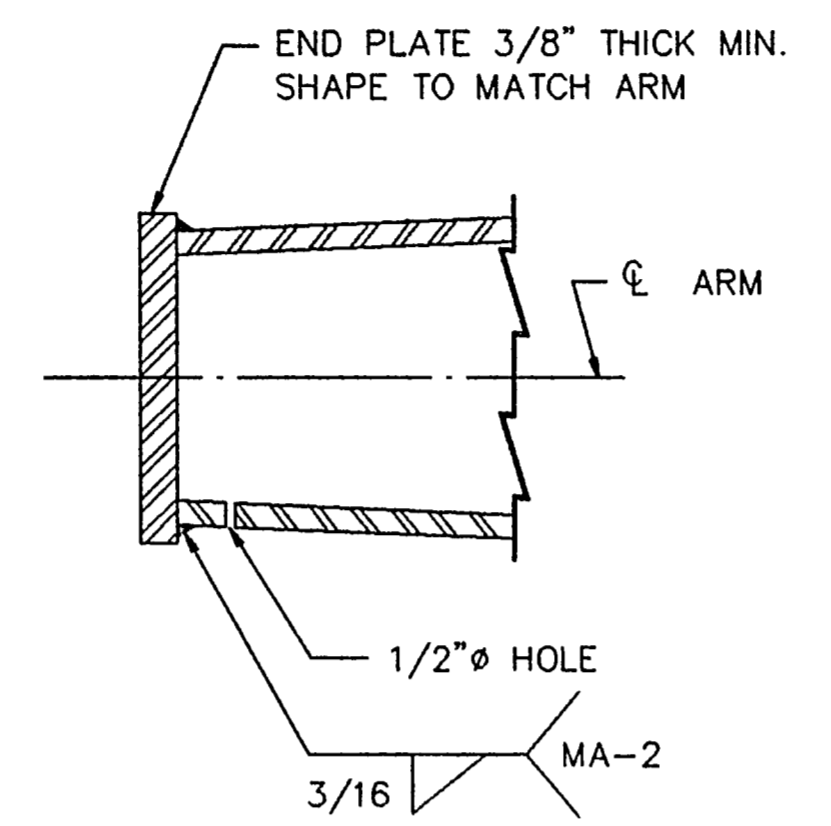


COUPLING DETAILS



LONGITUDINAL SEAM WELD MUST BE ORIENTED WITHIN THE LOWER 90° OF THE SIGNAL ARM.

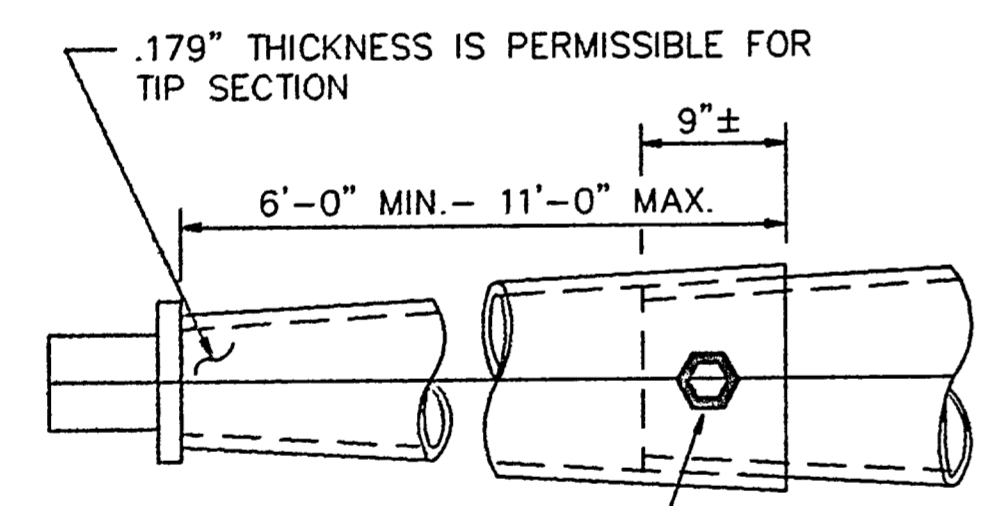
ARM WELD DETAIL



NOTE :

"POLE MANUFACTURER SHALL DRILL 1/2" HOLE IN BOTTOM OF MAST ARM AT END PLATE" (FOR HOT-DIP GALVANIZING)

PLATE WELD DETAIL



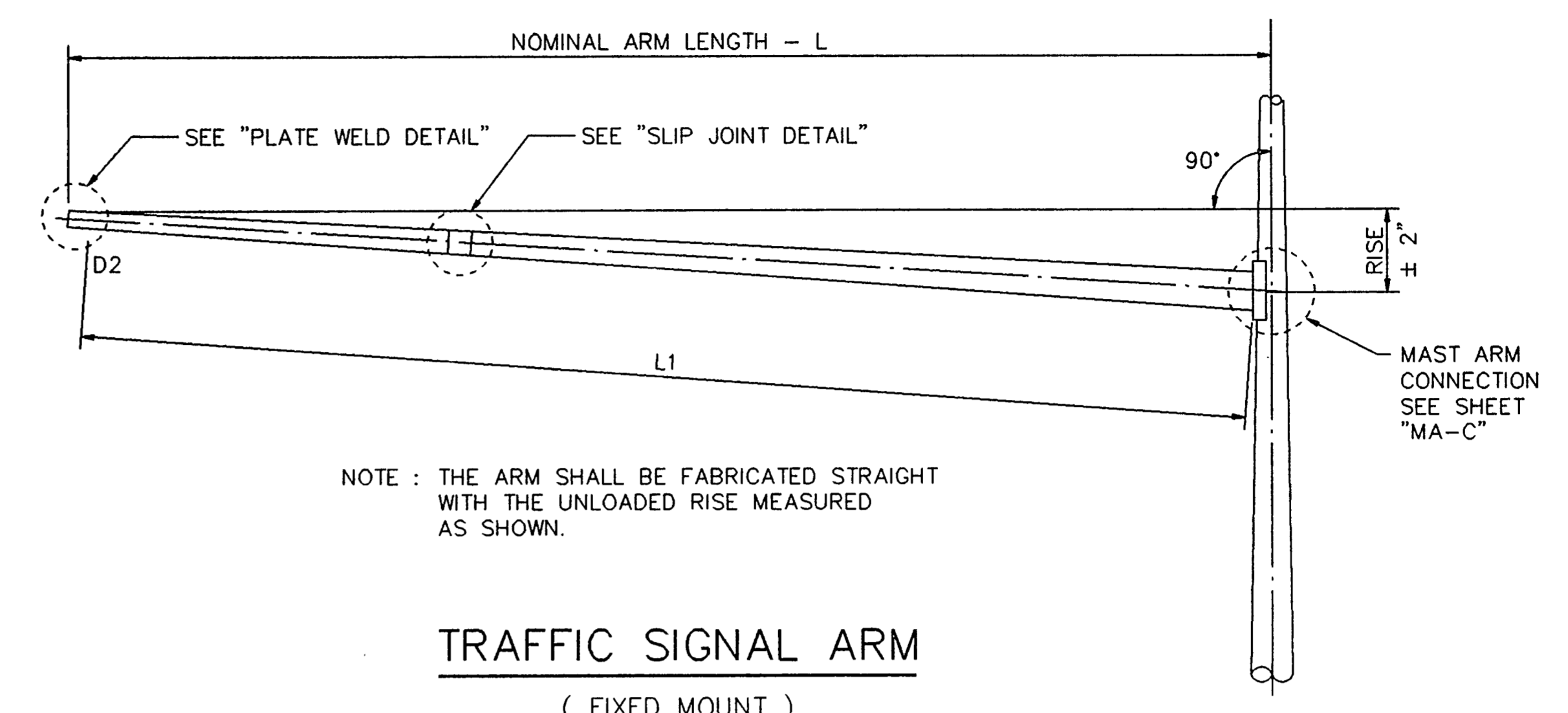
MIN. LAP EQUALS 1.5 TIMES FEMALE I.D.

NOTE :

A SLIP JOINT IS PERMISSIBLE FOR ARMS 40' AND GREATER IN LENGTH. THE SLIP JOINT SHALL BE MADE IN THE SHOP, BUT MAY BE MATCH MARKED AND SHIPPED DISASSEMBLED.

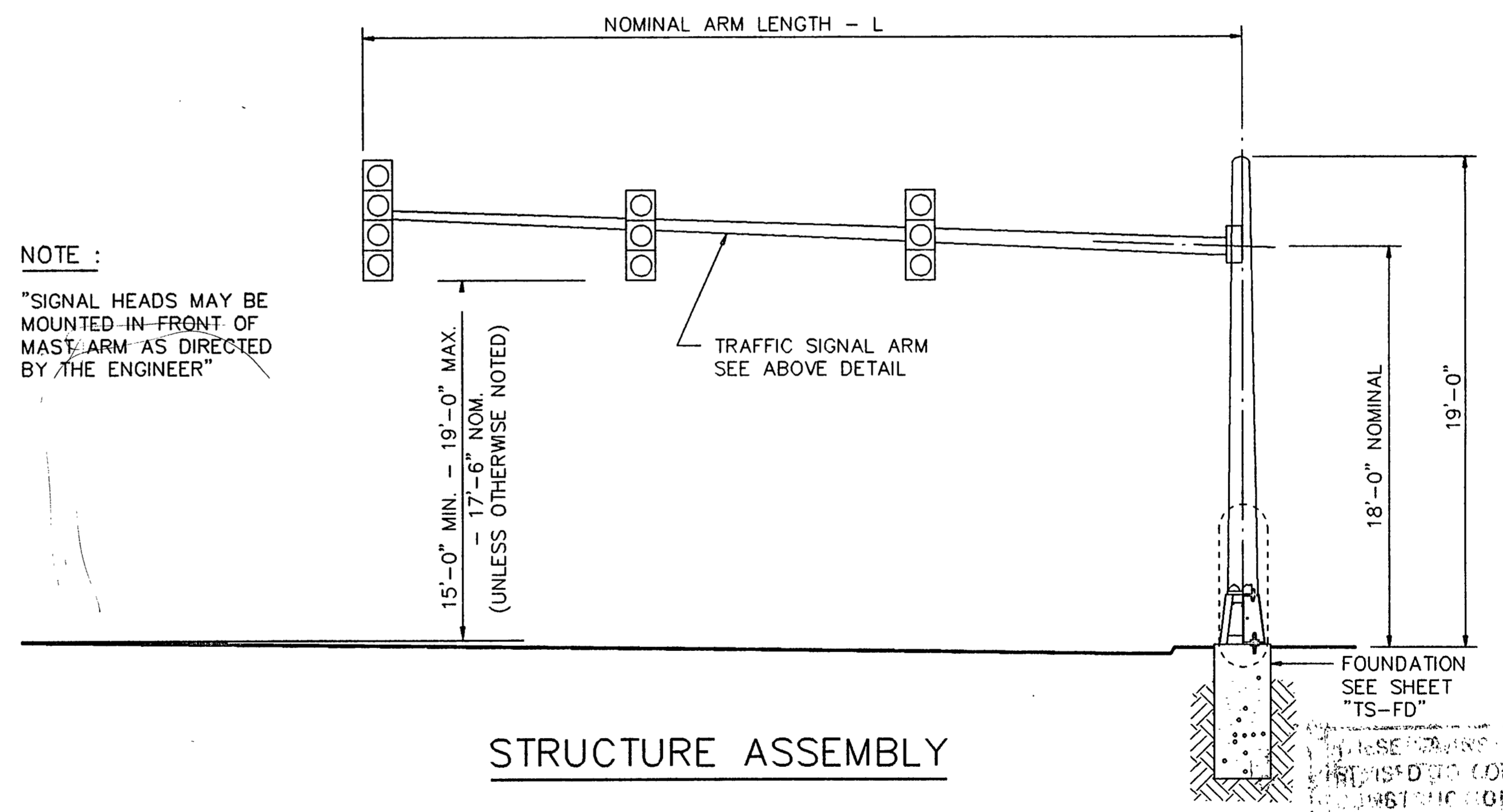
4-3/4" Ø HOLES AND 1-5/8" Ø GALV. A307 BOLT. TACK WELD NUT TO THREAD PROJECTION AFTER MAKING JOINT. REPAIR DAMAGED GALVANIZING IN ACCORDANCE WITH THE SPECIFICATIONS.

SLIP JOINT DETAILS



NOTE : THE ARM SHALL BE FABRICATED STRAIGHT WITH THE UNLOADED RISE MEASURED AS SHOWN.

TRAFFIC SIGNAL ARM (FIXED MOUNT)



NOTE :

"SIGNAL HEADS MAY BE MOUNTED IN FRONT OF MAST ARM AS DIRECTED BY THE ENGINEER"

STRUCTURE ASSEMBLY

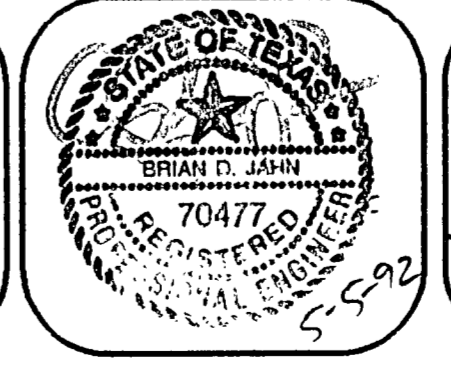
THESE DRAWINGS HAVE BEEN PREPARED TO CONFORM WITH THE LATEST EDITIONS OF THE AIAA ENGINEERING RECORD.
Tom Simony
 10-28-92

REVISIONS			
NO.	DESCRIPTION	DATE	BY

DUNAWAY ASSOCIATES, INC.

DeShazo, Starek, & Tang, Inc.
 ENGINEERS • PLANNERS
 380 Union Station
 Dallas, Texas 75202-4802
 (214) 748-6740
 Fax: (214) 748-7037

DESIGN BY: BDJ DATE: 2-14-92
 DRAWN BY: SAM DATE: 2-14-92
 CHECKED BY: BDJ DATE: 2-14-92
 APPROVED BY: DATE: _____



SINGLE MAST ARM ASSEMBLIES
 (80 MPH WIND ZONE)
 Scale : NONE
 Page 1 of 2

SHEET
 9
 OF
 19
 91268-09