

HOOKED ANCHOR (TYPE 1) NUT ANCHOR (TYPE 2)

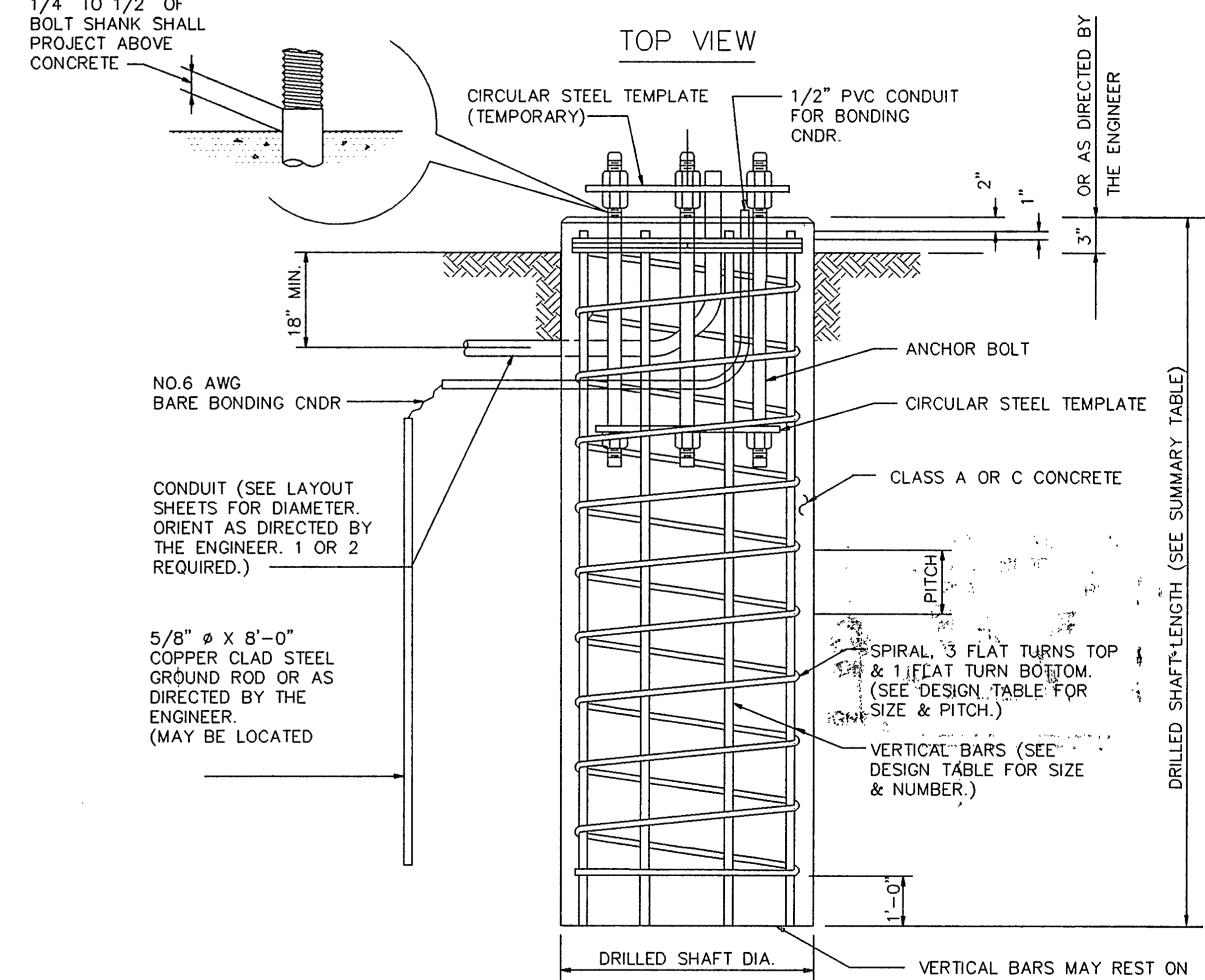
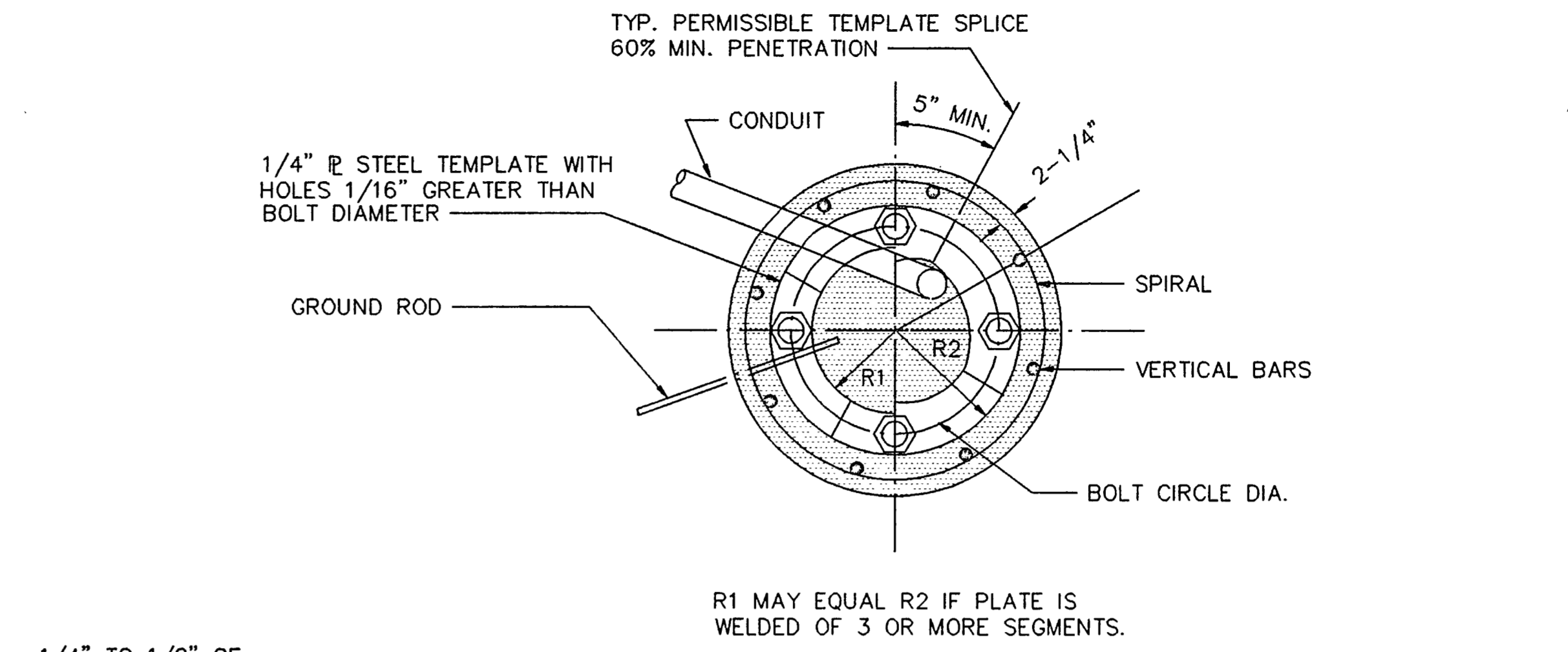
ANCHOR BOLT ASSEMBLY

INSTALLATION PROCEDURE :

THREADS OF ANCHOR BOLTS SHALL BE COATED WITH PIPE JOINT COMPOUND PRIOR TO INSTALLATION OF UPPER NUTS WHEN ERECTING POLE. AFTER POLE IS PLUMBED AND IN PERMANENT ALIGNMENT, THE EXPOSED THREADS OF PAINTED BOLTS SHALL BE CLEANED AND AN ADDITIONAL COATING OF ZINC-RICH PAINT APPLIED TO SEAL THE BOLT THREAD-NUT JOINT.

NOTES :

- (1) ANCHOR BOLT DESIGN DEVELOPS THE FOUNDATION CAPACITY GIVEN UNDER FOUNDATION DESIGN LOADS.
- (2) FOUNDATION DESIGN LOADS ARE THE ALLOWABLE MOMENTS AND SHEARS AT THE BASE OF THE STRUCTURE.
- (3) FOUNDATIONS MAY BE LISTED SEPARATELY OR GROUPED ACCORDING TO SIMILARITY OF LOCATION AND TYPE. QUANTITIES ARE FOR THE CONTRACTOR'S INFORMATION ONLY.
- (4) FIELD PENETROMETER READINGS AT A DEPTH OF APPROXIMATELY 3 TO 5 FEET MAY BE USED TO ADJUST SHAFT LENGTHS.
- (5) IF ROCK IS ENCOUNTERED, THE DRILLED SHAFT SHALL EXTEND A MINIMUM OF TWO DIAMETERS INTO SOLID ROCK.
- (6) DECIMAL LENGTHS IN DESIGN TABLE ARE TO ALLOW INTERPOLATION FOR OTHER PENETROMETER VALUES. ROUND TO NEAREST FOOT FOR ENTRY INTO SUMMARY TABLE.



ELEVATION FOUNDATION DETAILS

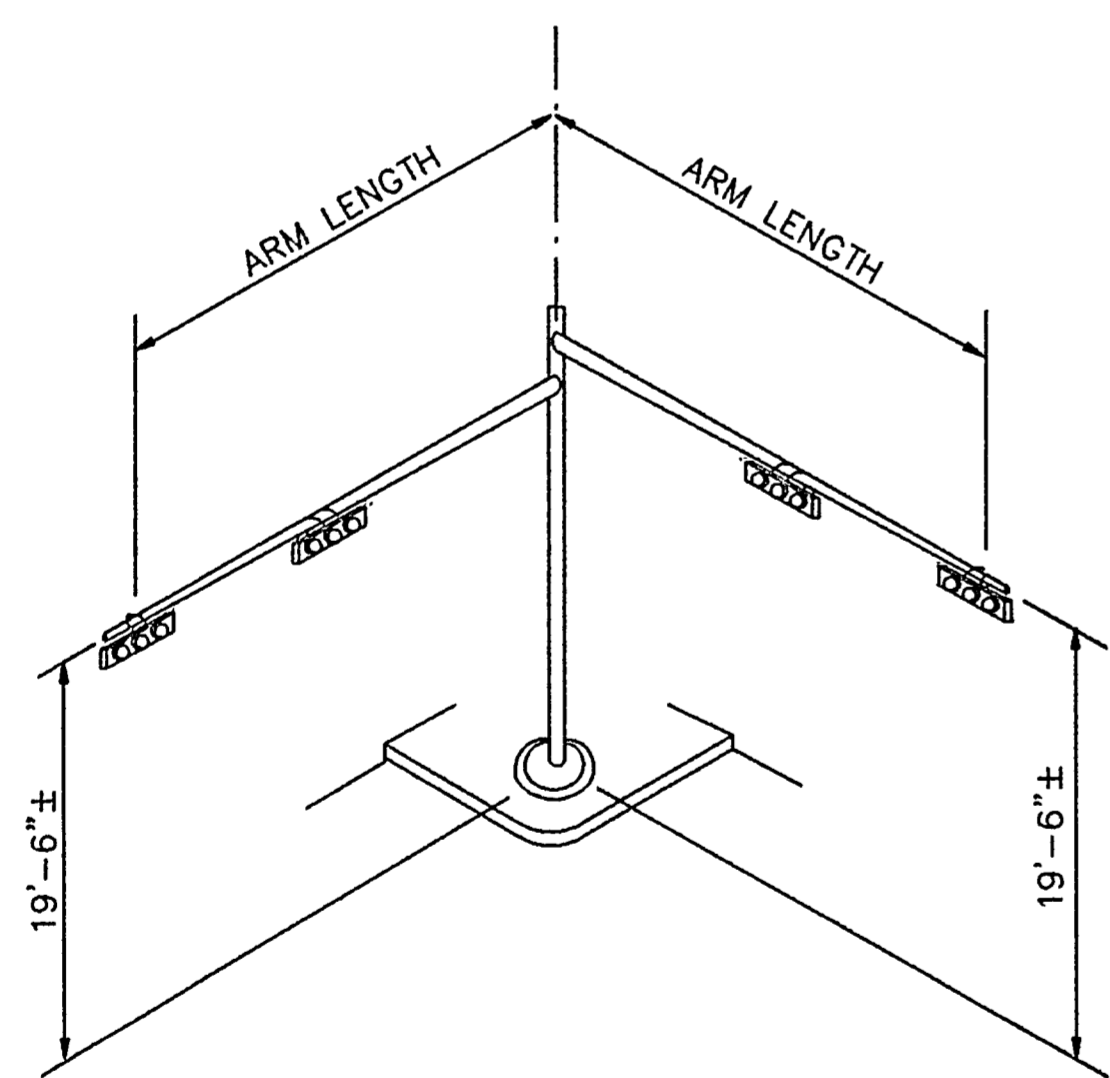
THESE PLANS HAVE BEEN REVIEWED TO CONFORM WITH CONSTRUCTION RECORDS

SIGNED *Tom Summey*

DATE 10-28-92

ANCHOR BOLT & TEMPLATE SIZES						
BOLT DIAMETER	BOLT LENGTH	TOP THREAD	BOTTOM THREAD	BOLT CIRCLE	R2	R1
3/4"	1'-6"	3"	-	12-3/4"	7-1/8"	5-5/8"
1-1/2"	3'-4"	6"	2"	17"	10"	7"
1-3/4"	3'-10"	7"	2-1/4"	19"	11-1/8"	7-3/4"
2"	4'-3"	8"	2-1/2"	21"	12-1/2"	8-1/2"

* MINIMUM DIMENSIONS GIVEN, LONGER BOLTS ARE ACCEPTABLE.



TYPICAL MAST ARM ASSEMBLY

REVISIONS			
NO.	DESCRIPTION	DATE	BY

DUNAWAY ASSOCIATES, INC.

DeShazo, Starek, & Tang, Inc.
 ENGINEERS • PLANNERS
 330 Union Station
 Dallas, Texas 75202-4802
 (214) 748-6740
 Fax: (214) 748-7037

DESIGN BY: BDJ DATE: 2-14-92
 DRAWN BY: SAM DATE: 2-14-92
 CHECKED BY: BDJ DATE: 2-14-92
 APPROVED BY: _____ DATE: _____



TRAFFIC SIGNAL POLE FOUNDATIONS

Scale : NONE

SHEET 11 OF 19
 91268-11