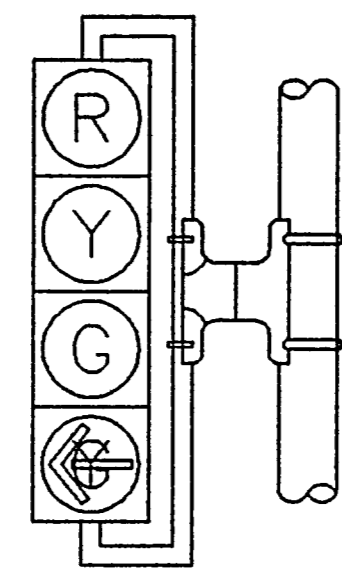
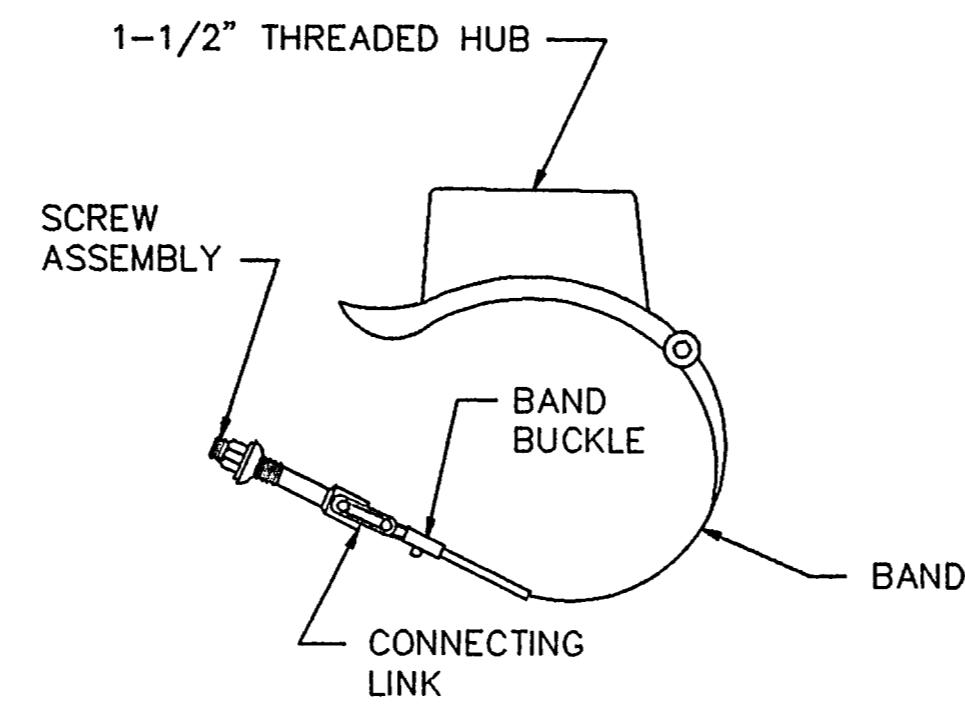


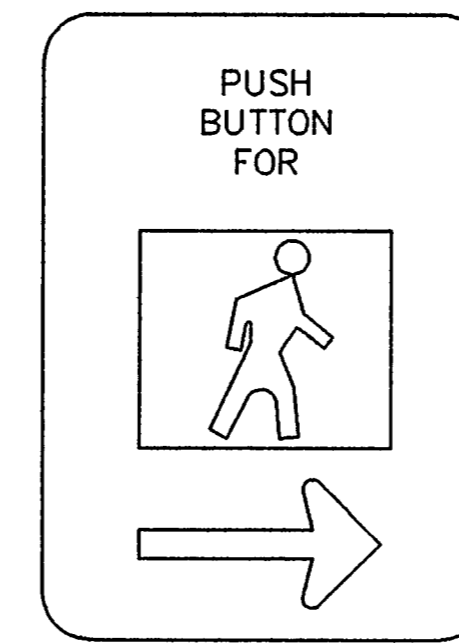
V3



V4LT



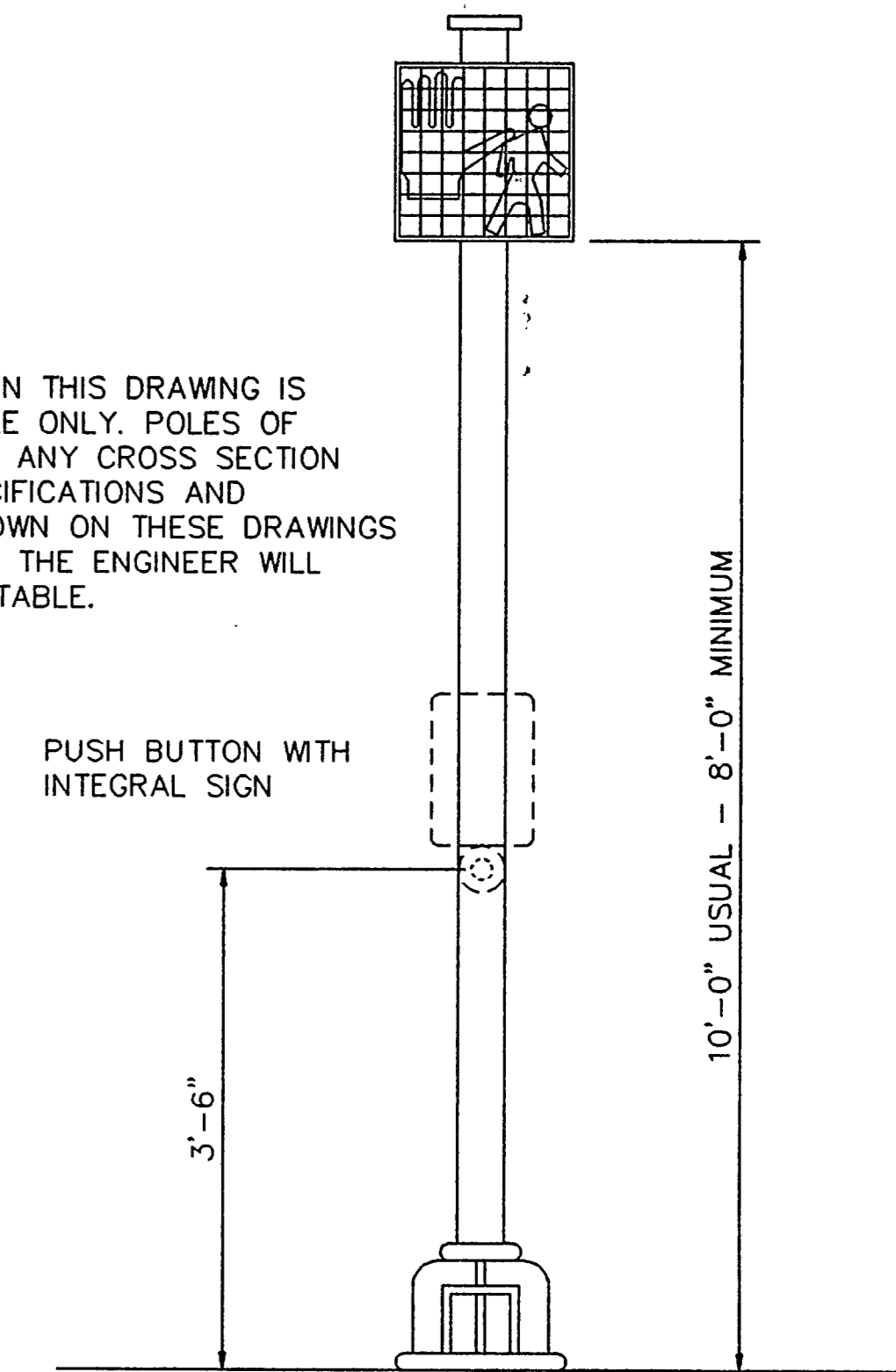
ASTRO MINI-BRAC



SIGN R10-4b  
9" x 12"

PEDESTRIAN PUSH BUTTON  
SIGN DETAILS

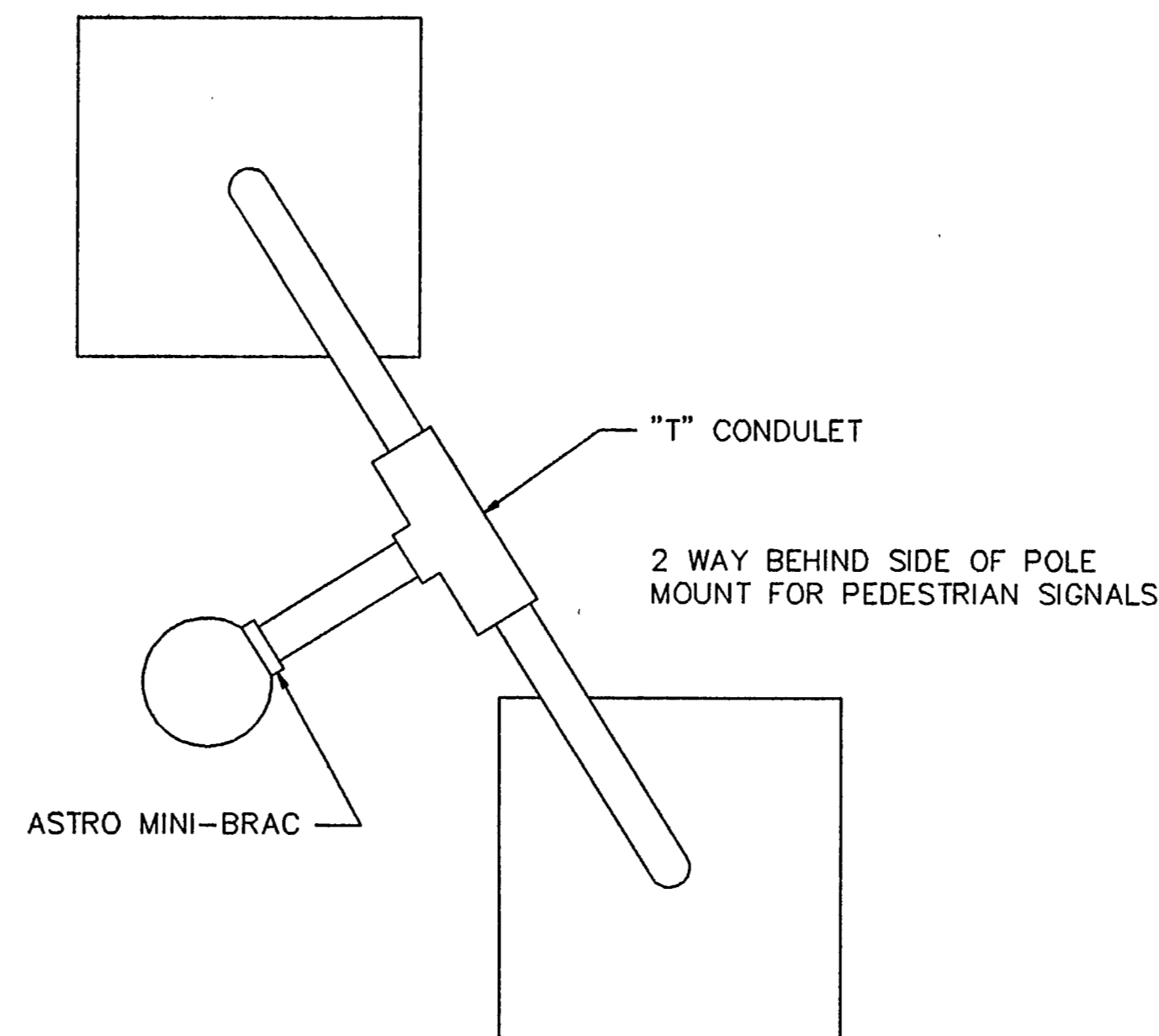
NOTE :  
THE POLE SHOWN IN THIS DRAWING IS SHOWN AS EXAMPLE ONLY. POLES OF SIMILAR DESIGN OF ANY CROSS SECTION AND MEETING SPECIFICATIONS AND REQUIREMENTS SHOWN ON THESE DRAWINGS AND APPROVED BY THE ENGINEER WILL BE DEEMED ACCEPTABLE.



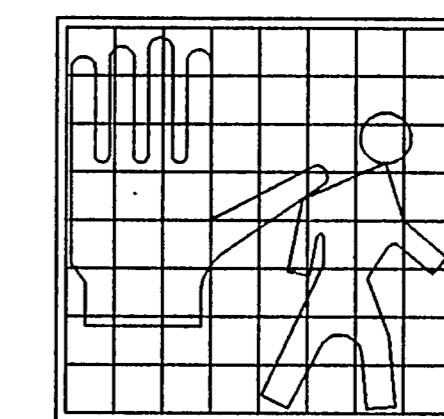
POST DETAIL

NOTES :

1. ALL SIGNAL HEAD LENSES SHALL BE 12" IN DIAMETER.
2. VEHICLE AND PEDESTRIAN SIGNAL HEADS SHALL BE MOUNTED WITH "ASTRO-BRACS" AND APPROPRIATE TUBING, PAINTED BLACK. ALL SIGNALS TO BE BLACK, ALL LENSES TO BE GLASS.
3. ALL VISORS SHALL BE TUNNEL VISORS.
4. ALL POLE MOUNTED VEHICLE AND PEDESTRIAN SIGNAL HEADS SHALL BE INSTALLED ON THE AWAY-FROM-TRAFFIC SIDE OF THE PEDESTAL OR MAST ARM POLE.
5. ALL SIGNAL HEADS WILL BE PROVIDED WITH BLACK 5" POLYCARBONATE VACUUM FORMED BACKPLATES.
6. ALL WIRING FOR VEHICLE AND PEDESTRIAN SIGNALS SHALL BE TOTALLY ENCLOSED WITHIN THE SIGNAL MOUNTING HARDWARE.
7. ALL DAMPING DEVICES SHALL BE 18" TO 2' WIDE BY 4' IN LENGTH.
8. ALL PEDESTRIAN SIGNAL HEADS AND PUSH BUTTON SIGNS SHALL DISPLAY THE SYMBOLIZED MESSAGES SHOWN ON THIS SHEET.
9. SYMBOLIZED MESSAGE HIGHT SHALL BE 10 INCHES MINIMUM.
10. PROVIDE DURO TEST 135 WATT SAVER LAMPS IN VEHICLE SIGNALS.
11. PROVIDE DURO TEST 60 WATT SAVER LAMPS IN PEDESTRIAN SIGNALS.



PEDESTRIAN SIGNAL HEAD MOUNTING  
FOR TWO PEDESTRIAN SIGNAL HEADS



152A

PEDESTRIAN SIGNAL HEAD IDENTIFICATION

THESE BRASS HAVE BEEN REVISID TO CONFORM WITH CONSTRUCTION RECORDS  
 Tom Simmy  
 DATE: 10-28-92

REVISIONS			
NO.	DESCRIPTION	DATE	BY

DUNAWAY ASSOCIATES,  
INC.

DeShazo, Starek, & Tang, Inc.  
ENGINEERS • PLANNERS  
330 Union Station  
Dallas, Texas 75202-4802  
(214) 748-6740  
Fax: (214) 748-7037

DESIGN BY: BDJ DATE: 2-14-92  
 DRAWN BY: SAM DATE: 2-14-92  
 CHECKED BY: BDJ DATE: 2-14-92  
 APPROVED BY: DATE:



TRAFFIC SIGNAL HEAD  
IDENTIFICATION  
Scale: NONE

SHEET  
15  
OF  
19  
91268-15