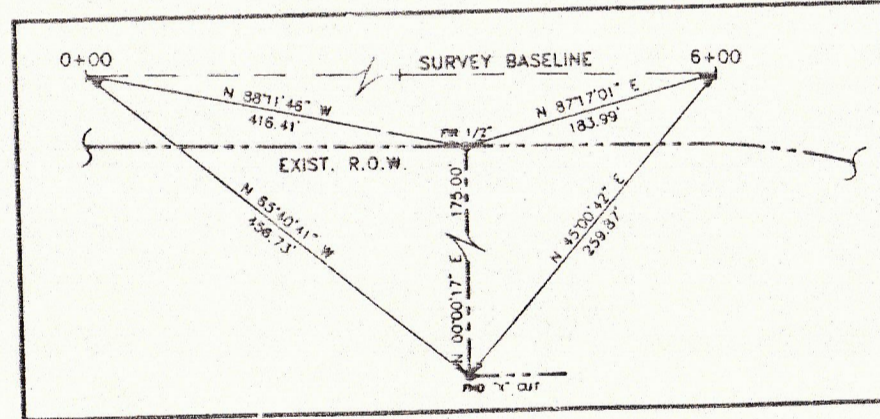
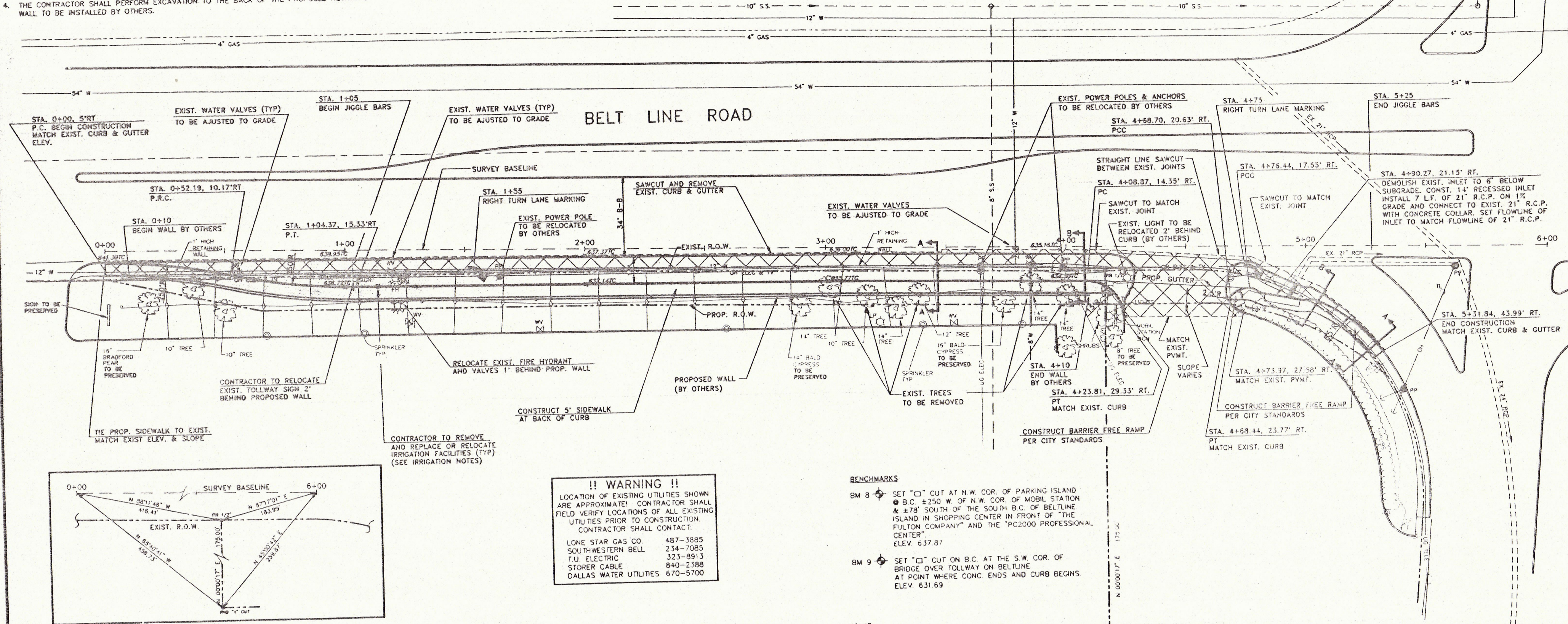
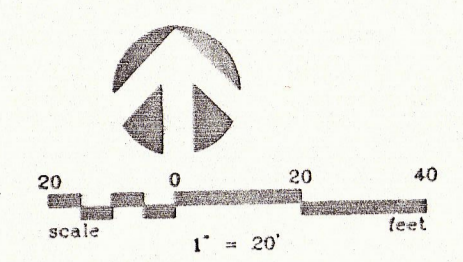


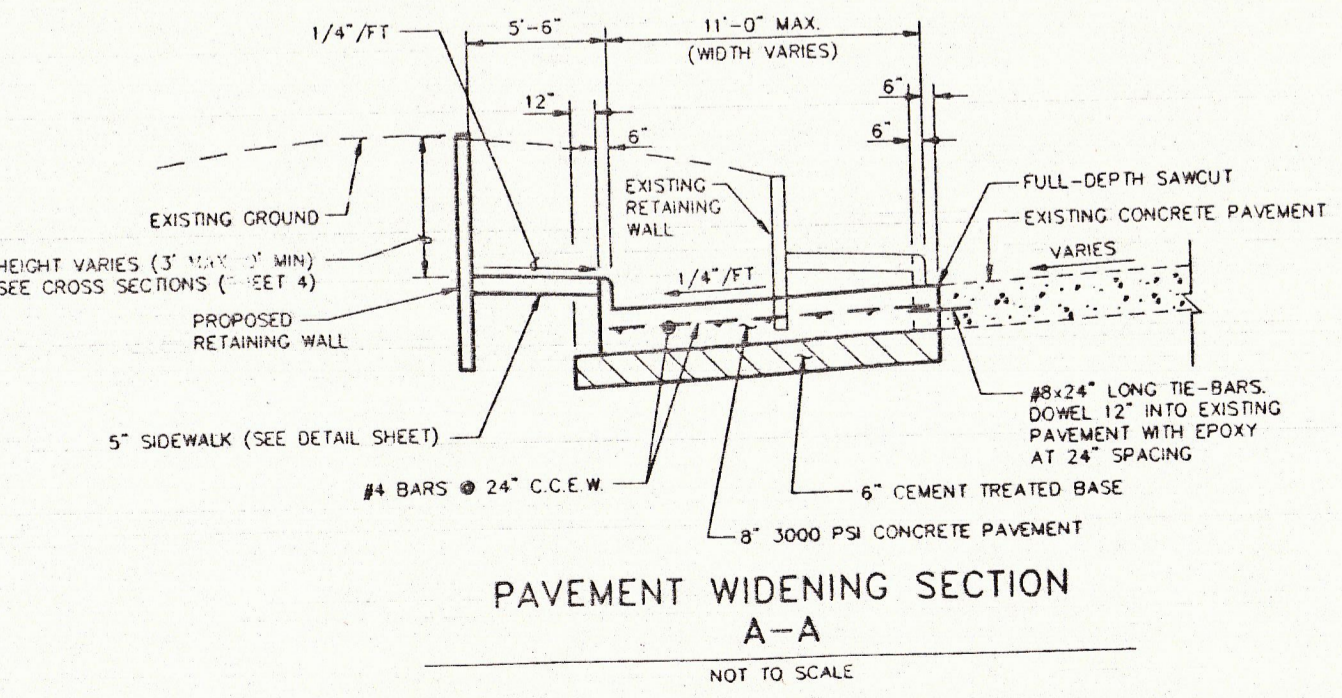
**NOTES**

1. CONTRACTOR SHALL MATCH EXISTING PAVEMENT ELEVATION AT SAWCUT LINE.
2. ALL DIMENSIONS ARE TO FACE OF CURB UNLESS OTHERWISE NOTED.
3. ALL TREES SHALL BE REMOVED EXCEPT THOSE NOTED ON THIS PLAN TO BE PRESERVED. THE CONTRACTOR SHALL COORDINATE WITH THE TOWN OF ADDISON PRIOR TO THE REMOVAL OF ANY TREES.
4. THE CONTRACTOR SHALL PERFORM EXCAVATION TO THE BACK OF THE PROPOSED RETAINING WALL TO BE INSTALLED BY OTHERS.

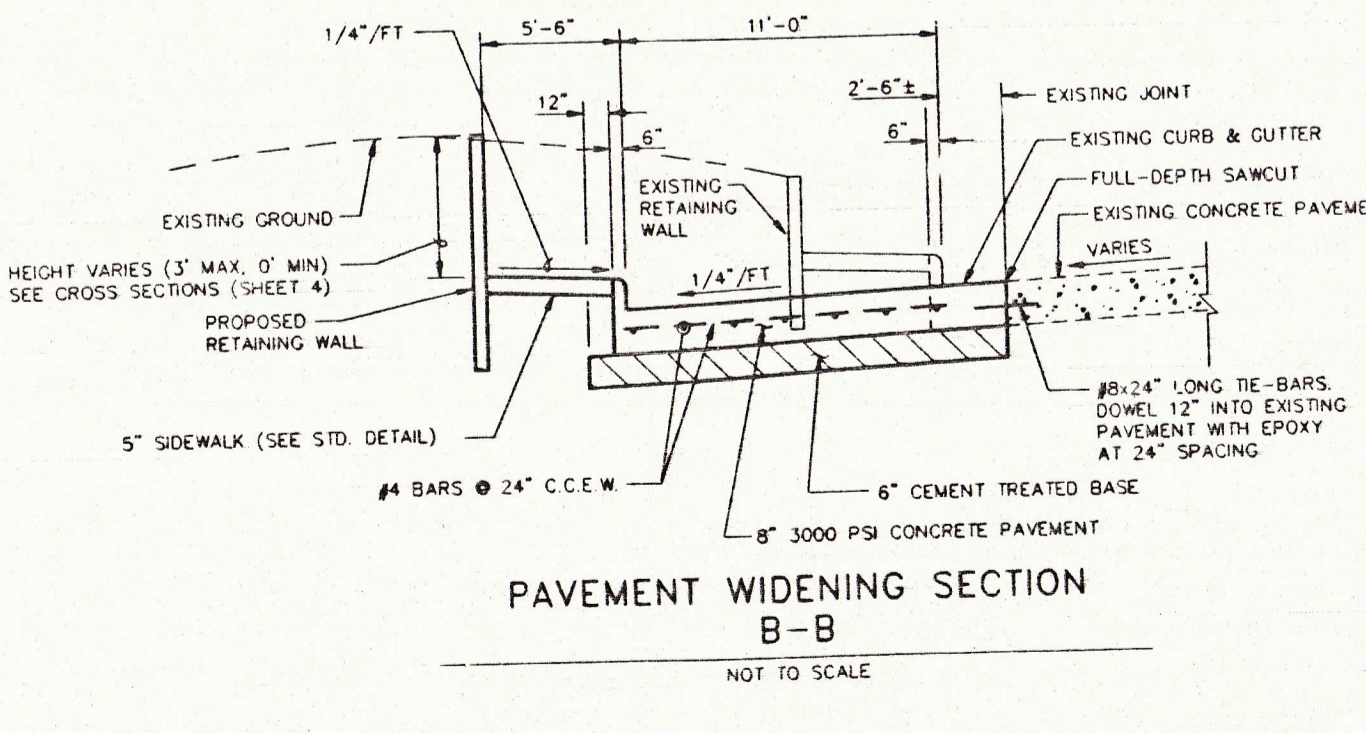


**!! WARNING !!**  
 LOCATION OF EXISTING UTILITIES SHOWN ARE APPROXIMATE. CONTRACTOR SHALL FIELD VERIFY LOCATIONS OF ALL EXISTING UTILITIES PRIOR TO CONSTRUCTION. CONTRACTOR SHALL CONTACT:  
 LONE STAR GAS CO. 487-3885  
 SOUTHWESTERN BELL 234-7085  
 T.U. ELECTRIC 323-8913  
 STORER CABLE 840-2388  
 DALLAS WATER UTILITIES 670-5700

**BENCHMARKS**  
 BM 8 SET "C" CUT AT N.W. COR. OF PARKING ISLAND @ B.C. ±250' W OF N.W. COR. OF MOBIL STATION & ±78' SOUTH OF THE SOUTH B.C. OF BELTLINE ISLAND IN SHOPPING CENTER IN FRONT OF "THE FULTON COMPANY" AND THE "PC2000 PROFESSIONAL CENTER" ELEV. 637.87  
 BM 9 SET "C" CUT ON B.C. AT THE S.W. COR. OF BRIDGE OVER TOLLWAY ON BELTLINE AT POINT WHERE CONC. ENDS AND CURB BEGINS. ELEV. 631.69



**PAVEMENT WIDENING SECTION A-A**  
 NOT TO SCALE



**PAVEMENT WIDENING SECTION B-B**  
 NOT TO SCALE

LEGEND	
	REMOVE EXISTING PAVEMENT AND SIDEWALK
	CONSTRUCT NEW PAVEMENT
	CONSTRUCT NEW SIDEWALK
	EXISTING CURB
	PROPOSED CURB
	PROPOSED ELEVATION
	EXISTING ELEVATION
	WATER LINE (SIZE)
	SANITARY SEWER LINE AND MANHOLE (SIZE)
	SOUTHWESTERN BELL TELEPHONE CABLE
	LONE STAR GAS LINE
	OVERHEAD POWER LINE AND POLE
	CURB LINE
	TU ELECTRIC UNDERGROUND CABLE

DESIGNED BY: P. HELMS	DRAWN BY: EHA	CHECKED BY: M. RASTANDEH	SCALE: 1" = 20'	DATE: JANUARY, 1995	FILE: ADDISON/IC WAY PAVING
NO.	REVISION	BY	DATE		

**EHA** Espy, Huston & Associates, Inc.  
 Engineering & Environmental Consultants  
 13800 Montfort Drive, Suite 230  
 Dallas, Texas 75240 (214) 387-0771

**PAVING PLAN**  
 PAVING AND DRAINAGE IMPROVEMENTS  
 BELT LINE ROAD AT DALLAS NORTH TOLLWAY  
 for  
 THE TOWN OF ADDISON

SHEET NO. 3  
 OF 13 SHEETS  
 JOB NO. 15224

DALLAS NORTH TOLLWAY