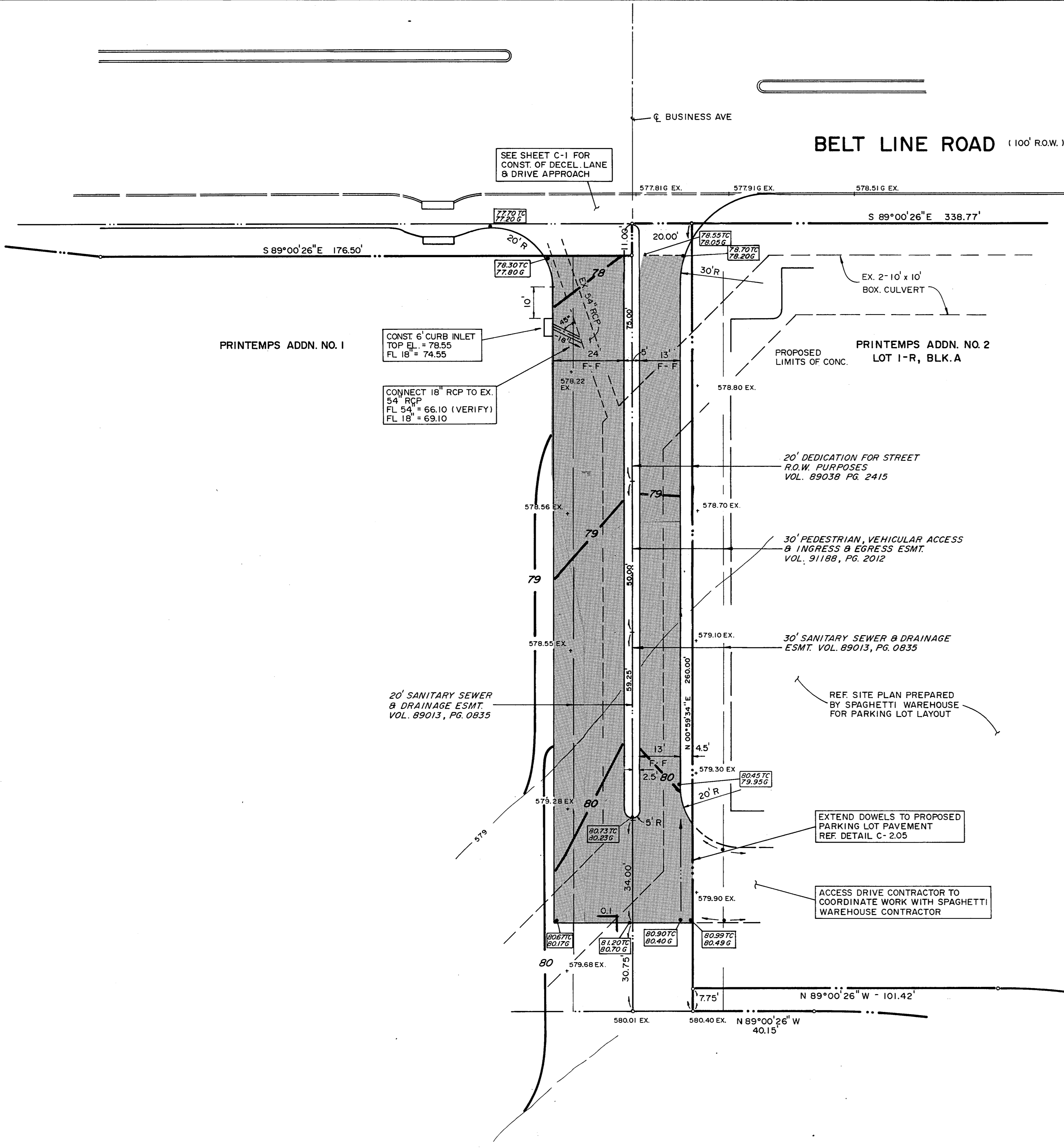


BELT LINE ROAD (100' R.O.W.)



SEE SHEET C-1 FOR CONST. OF DECEL. LANE & DRIVE APPROACH

CONST 6" CURB INLET
TOP EL. = 78.55
FL 18" = 74.55

CONNECT 18" RCP TO EX. 54" RCP
FL 54" = 66.10 (VERIFY)
FL 18" = 69.10

PROPOSED LIMITS OF CONC.
PRINTemps ADDN. NO. 2
LOT 1-R, BLK. A

20' DEDICATION FOR STREET R.O.W. PURPOSES
VOL. 89038 PG. 2415

30' PEDESTRIAN, VEHICULAR ACCESS & INGRESS & EGRESS ESMT.
VOL. 91189, PG. 2012

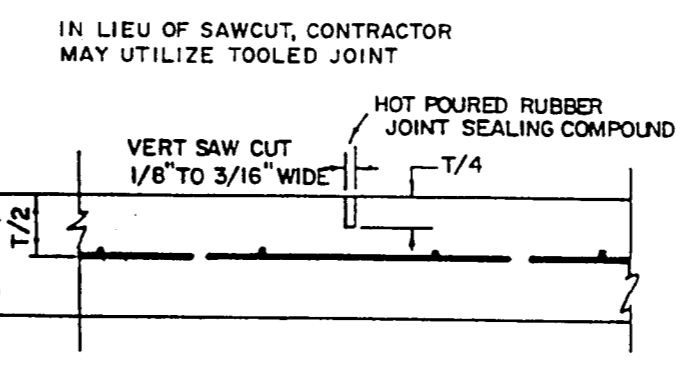
30' SANITARY SEWER & DRAINAGE ESMT.
VOL. 89013, PG. 0835

20' SANITARY SEWER & DRAINAGE ESMT.
VOL. 89013, PG. 0835

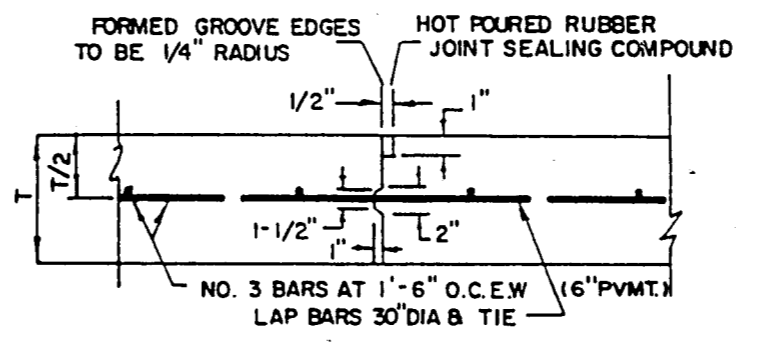
REF. SITE PLAN PREPARED BY SPAGHETTI WAREHOUSE FOR PARKING LOT LAYOUT

EXTEND DOWELS TO PROPOSED PARKING LOT PAVEMENT
REF. DETAIL C-2.05

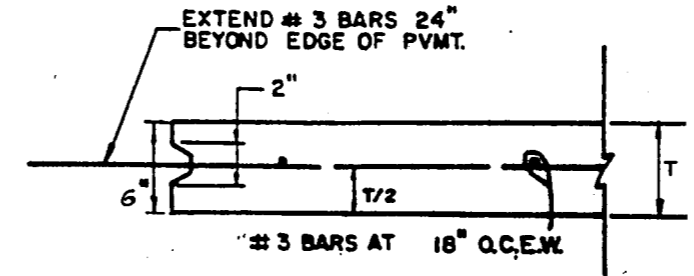
ACCESS DRIVE CONTRACTOR TO COORDINATE WORK WITH SPAGHETTI WAREHOUSE CONTRACTOR



0.3 CONTROL JOINT
SC: N.T.S.

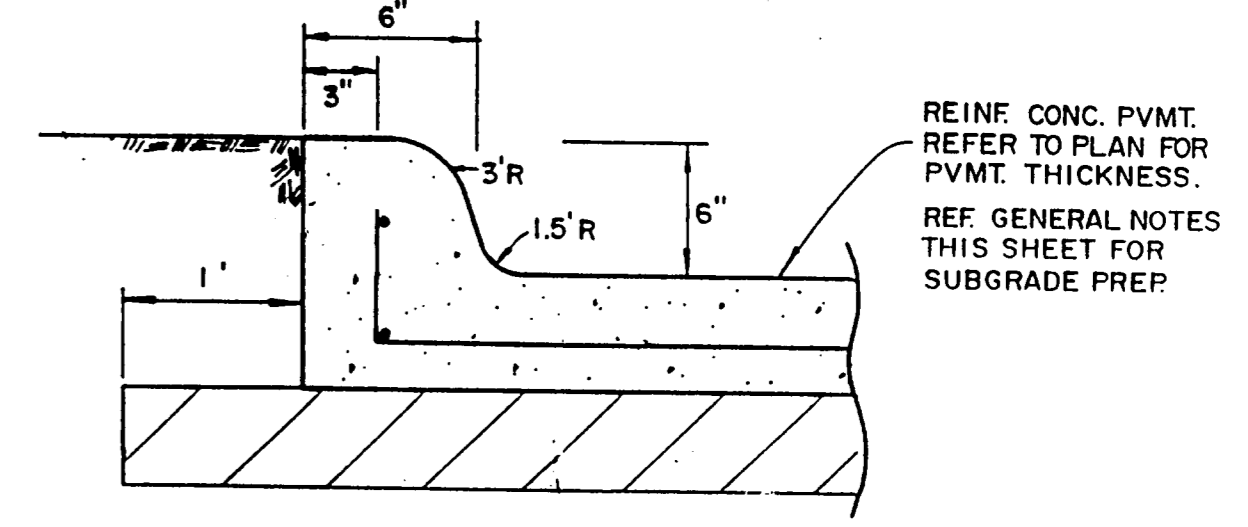


0.4 CONSTRUCTION JOINT
SC: N.T.S.

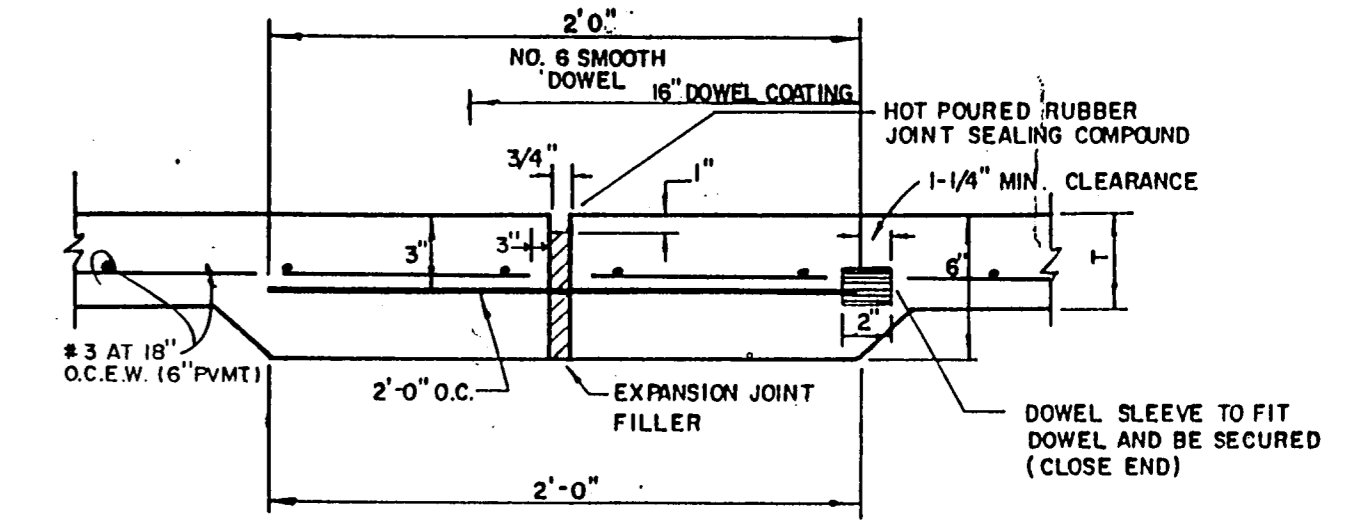


0.5 FREE EDGE P.V.M.T. SECTION
SC: N.T.S.

- PAVING GENERAL NOTES**
- ALL CONCRETE PAVING SHALL BE 6" THICKNESS AND BE 3,000 PSI CONCRETE AT 28 DAYS WITH A MIXTURE THAT IS A MINIMUM OF FIVE SACKS PER CUBIC YARD AND HAVING A ONE INCH TO FOUR INCH SLUMP AND REINFORCED WITH #3 BARS @ 18" O.C.E.W. FOR 6" THICK PAVEMENT AND REINFORCING SHALL BE SUPPORTED BY CHAIRS AND SPACED AT 16 S.F. MAXIMUM INTERVAL.
 - SUBGRADE SHALL BE SCARIFIED TO A DEPTH OF SIX INCHES (6") AND RECOMPACTED TO 95% STANDARD PROCTOR DENSITY AT ±3% OPTIMUM MOISTURE CONTENT.
 - SEALANT MATERIAL TO BE 0A55 ASPHALT OR A RUBBER BASED COMPOUND. SPECIFICATIONS TO BE SUBMITTED TO THE ENGINEER PRIOR TO INSTALLATION.
 - BREAKOUTS FOR REMOVAL OF EXISTING PAVEMENT AND CURBS SHALL BE MADE BY SAW CUT WHEN ADJACENT TO PROPOSED PAVING AND/OR CURBS.
 - PROPOSED CONCRETE CURBS SHALL MATCH ELEVATIONS OF EXISTING CURB.
 - CONCRETE TO BE FLOAT FINISHED AND CURED FOR A MINIMUM OF 72 HOURS.
 - ALL WORKMANSHIP AND MATERIALS SHALL BE ACCORDANCE WITH TOWN OF ADDISON STANDARD SPECIFICATIONS AND/OR SPECIFICATIONS ESTABLISHED BY THIS PROJECT.
 - CONTRACTOR SHALL SUBMIT A JOINT SPACING PLAN TO THE ENGINEER PRIOR TO PLACEMENT OF CONCRETE PAVEMENT. CONTROL JOINTS SHALL BE INSTALLED AT A MAXIMUM SPACING OF 15' O.C.E.W. EXPANSION JOINTS SHALL BE INSTALLED AT A MAXIMUM SPACING OF 90'. CONCRETE SHALL BE PLACED IN STRIPS NOT TO EXCEED 30 FEET IN WIDTH. LEVEL UP SAND COARSE WILL NOT BE ALLOWED. JOINT SPACING PLAN SHOULD BE SUBMITTED TO ENGINEER FOR APPROVAL.
 - CONTRACTOR WILL PROVIDE A TWO (2) YEAR UNCONDITIONAL MAINTENANCE FREE WARRANTY ON PORTLAND CEMENT CONCRETE PAVEMENT.



0.1 INTEGRAL CURB SECTION



0.2 EXPANSION JOINT
SC: N.T.S.

REINFC. CONC. PVMT. REFER TO PLAN FOR PVMT THICKNESS. REF GENERAL NOTES THIS SHEET FOR SUBGRADE PREP.

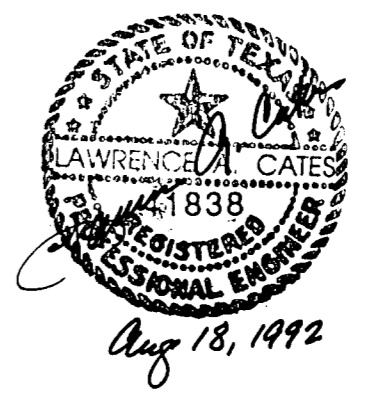
DOWEL SUPPORT SHALL BE OF A METHOD APPROVED BY THE ENGINEER

LOT 2-R
BLOCK A
PRINTemps ADDN. NO. 2

AS BUILTS
I CERTIFY THIS PROJECT WAS CONSTRUCTED IN GENERAL CONFORMANCE WITH THESE CONSTRUCTION PLANS AND WILL FUNCTION AS DESIGNED.

BENCHMARK:
" " CUT ON STORM SEWER INLET ON SOUTH SIDE OF BELT LINE ROAD 70'± WEST OF COMMERCIAL DRIVE.
ELEV. 580.56'

John A. Cates
01-16-93



REV: 08-28-92 REV DRIVE
REV: 08-17-92 PER CITY COMMENTS

WEST ACCESS DRIVE						
SPAGHETTI WAREHOUSE						
LOT 1-R, PRINTemps NO. 1 ADDN.						
TOWN OF ADDISON, TX.						
LAWRENCE A. CATES & ASSOC.						CONSULTING ENGINEERS DALLAS, TEXAS
DESIGN	DRAWN	DATE	SCALE	NOTES	FILE	NO.
L.A.C.	L.A.C.	7/20/92	1"=20'		92023	C-2