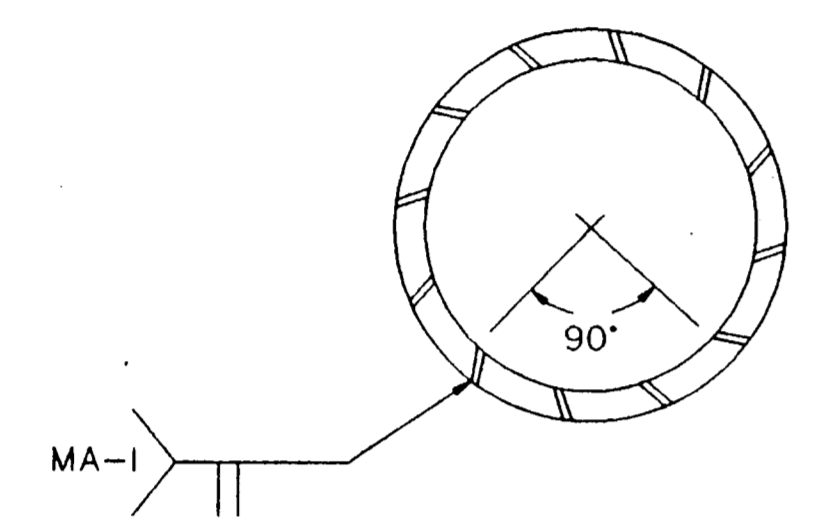
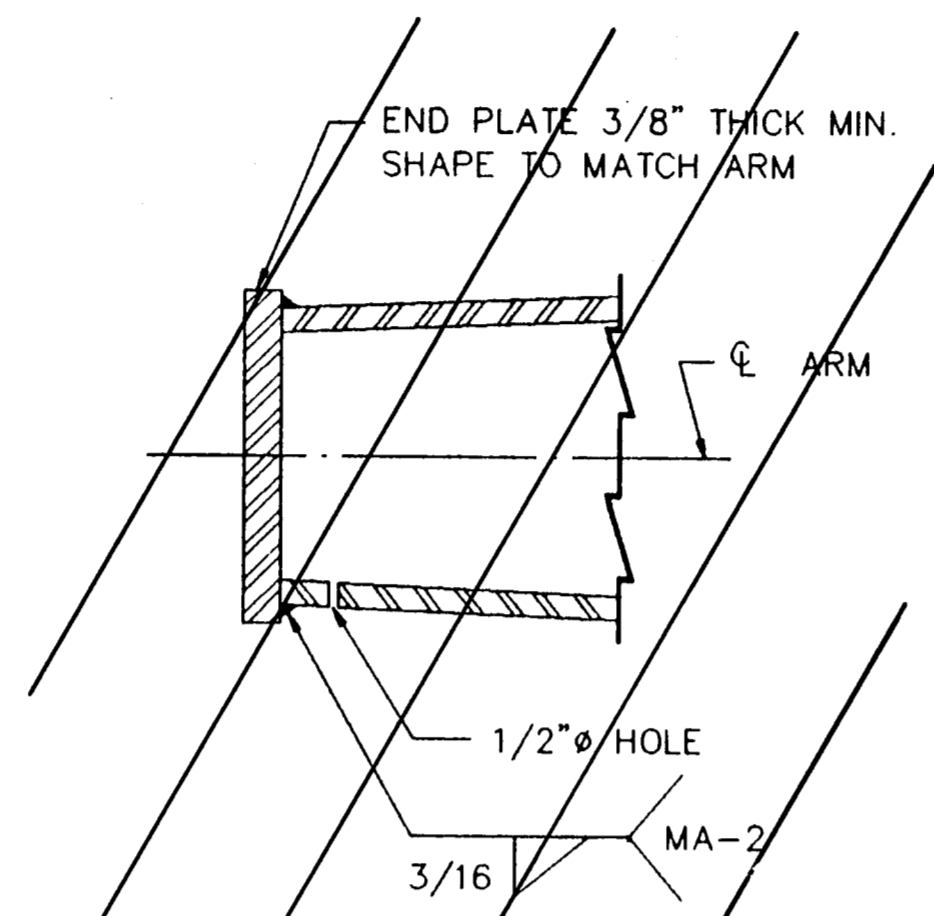


COUPLING DETAILS



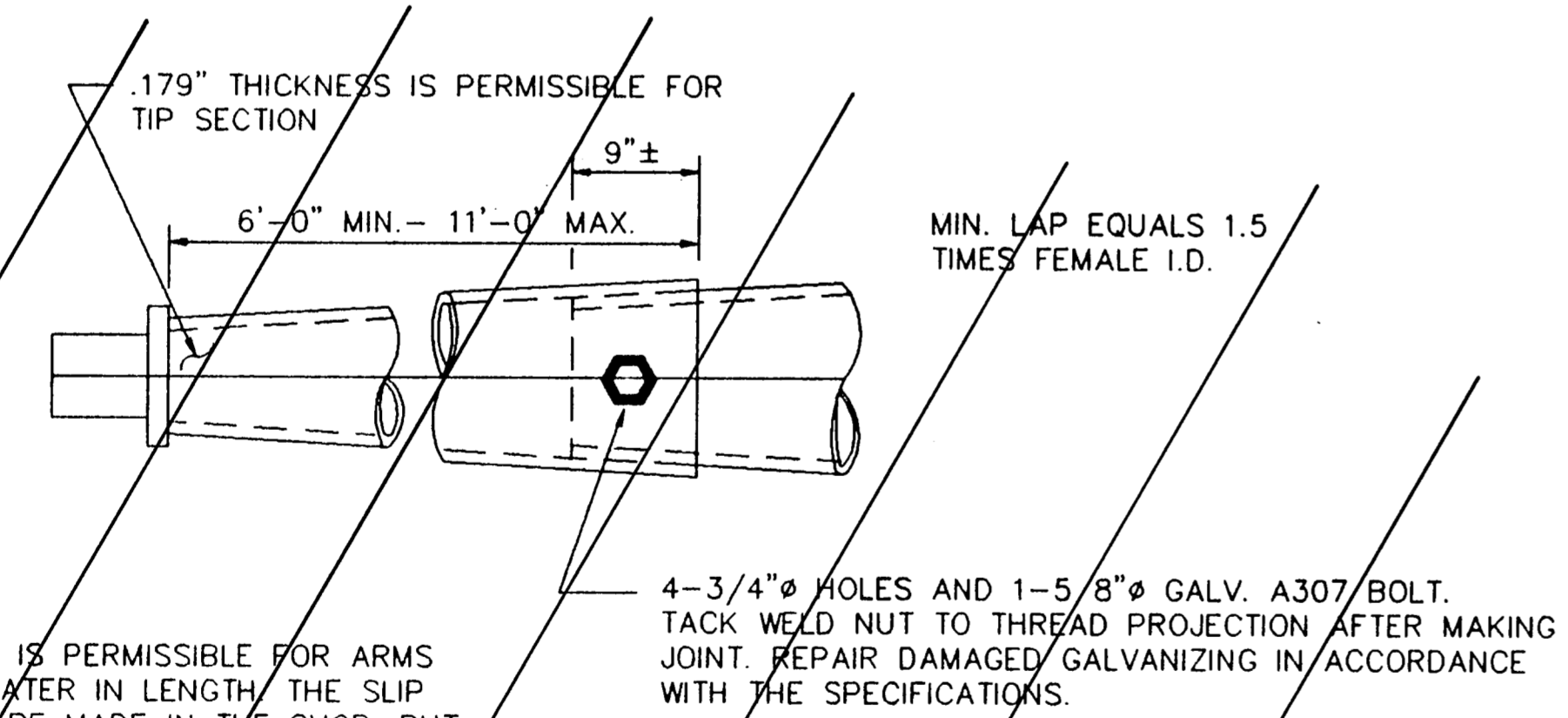
LONGITUDINAL SEAM WELD MUST BE ORIENTED WITHIN THE LOWER 90° OF THE SIGNAL ARM.

ARM WELD DETAIL



NOTE :
POLE MANUFACTURER SHALL DRILL 1/2" HOLE IN BOTTOM OF MAST ARM AT END PLATE (FOR HOT-DIP GALVANIZING)

PLATE WELD DETAIL

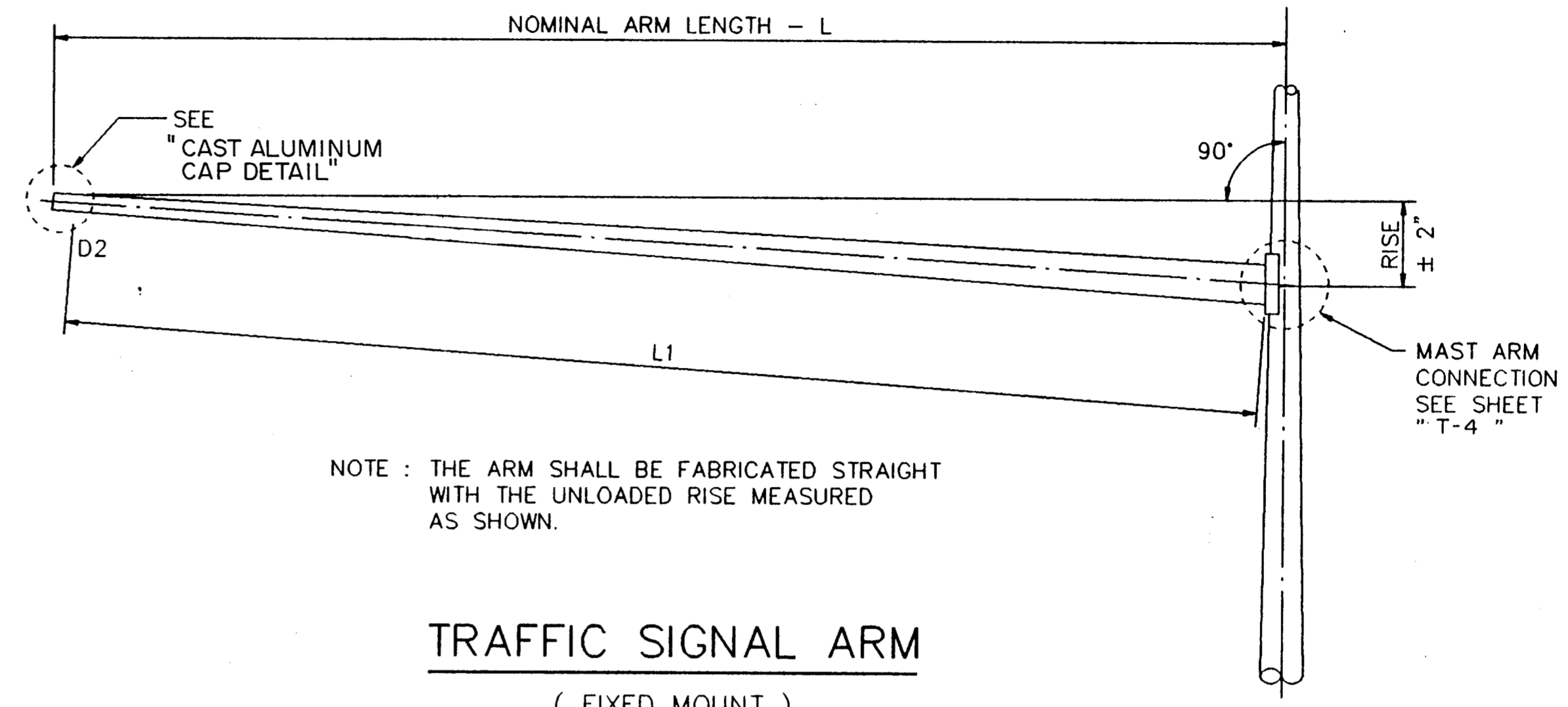


NOTE :

A SLIP JOINT IS PERMISSIBLE FOR ARMS 40' AND GREATER IN LENGTH. THE SLIP JOINT SHALL BE MADE IN THE SHOP, BUT MAY BE MATCH MARKED AND SHIPPED DISASSEMBLED.

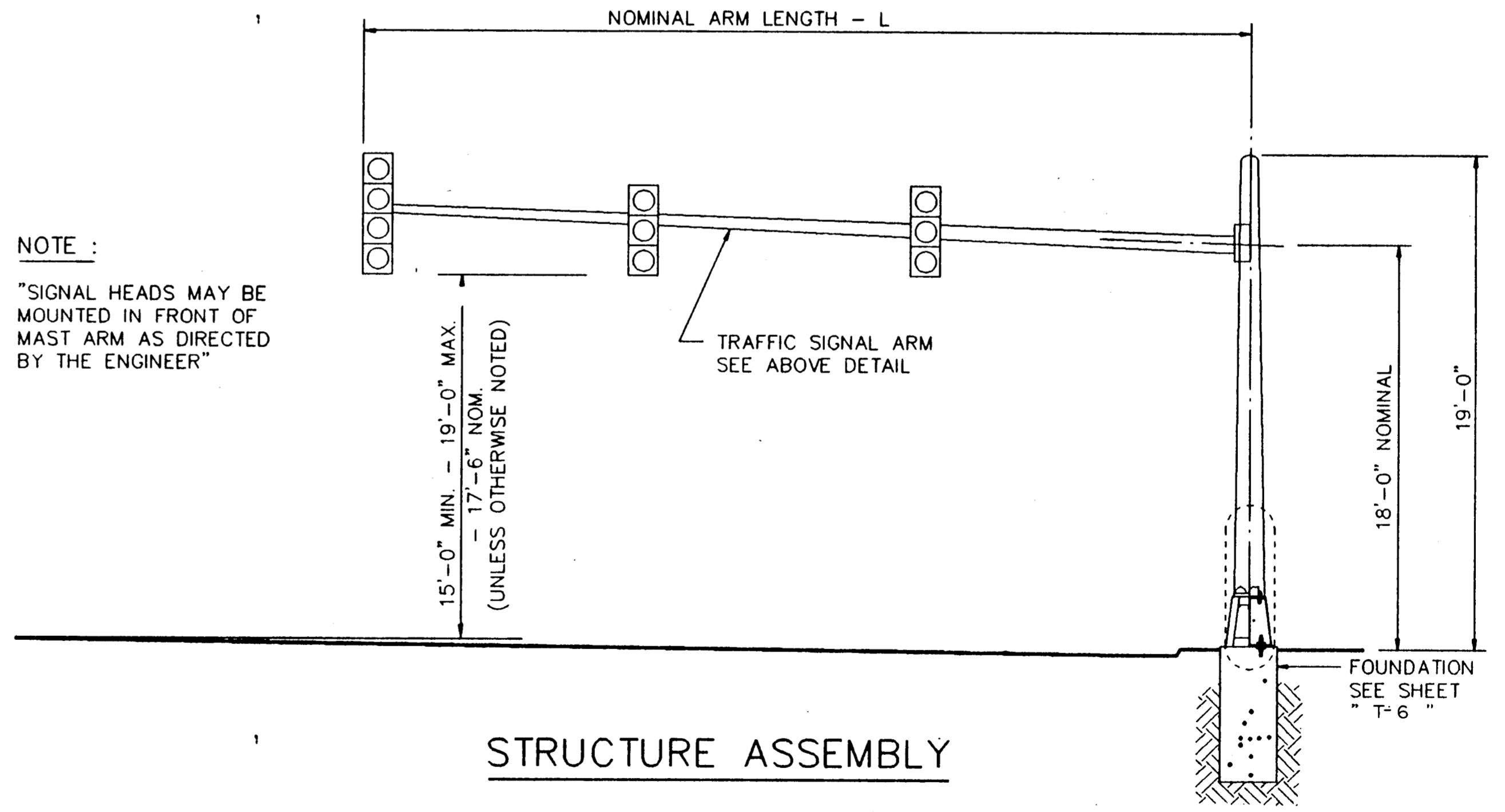
4-3/4" HOLES AND 1-5/8" GALV. A307 BOLT. TACK WELD NUT TO THREAD PROJECTION AFTER MAKING JOINT. REPAIR DAMAGED GALVANIZING IN ACCORDANCE WITH THE SPECIFICATIONS.

SLIP JOINT DETAILS



NOTE : THE ARM SHALL BE FABRICATED STRAIGHT WITH THE UNLOADED RISE MEASURED AS SHOWN.

TRAFFIC SIGNAL ARM
(FIXED MOUNT)



NOTE :

"SIGNAL HEADS MAY BE MOUNTED IN FRONT OF MAST ARM AS DIRECTED BY THE ENGINEER"

TRAFFIC SIGNAL ARM SEE ABOVE DETAIL

STRUCTURE ASSEMBLY

AS BUILTS

I CERTIFY THIS PROJECT WAS CONSTRUCTED IN GENERAL CONFORMANCE WITH THESE CONSTRUCTION PLANS AND WILL FUNCTION AS DESIGNED.

John A. Cates
01/16/93

John French
9-12-92

| | | | | | | |
|---------------------------------------|-------|---------|-------|-------|-------|----------------------|
| MAST ARM DETAILS | | | | | | |
| BELTLINE RD. EAST OF MARSH LN. | | | | | | |
| TOWN OF ADDISON, TEXAS | | | | | | |
| LAWRENCE A. CATES & ASSOC. | | | | | | CONSULTING ENGINEERS |
| | | | | | | DALLAS, TEXAS |
| DESIGN | DRAWN | DATE | SCALE | NOTES | FILE | NO. |
| LAC | LAC | 8/24/92 | NTS | | 92023 | T3 |