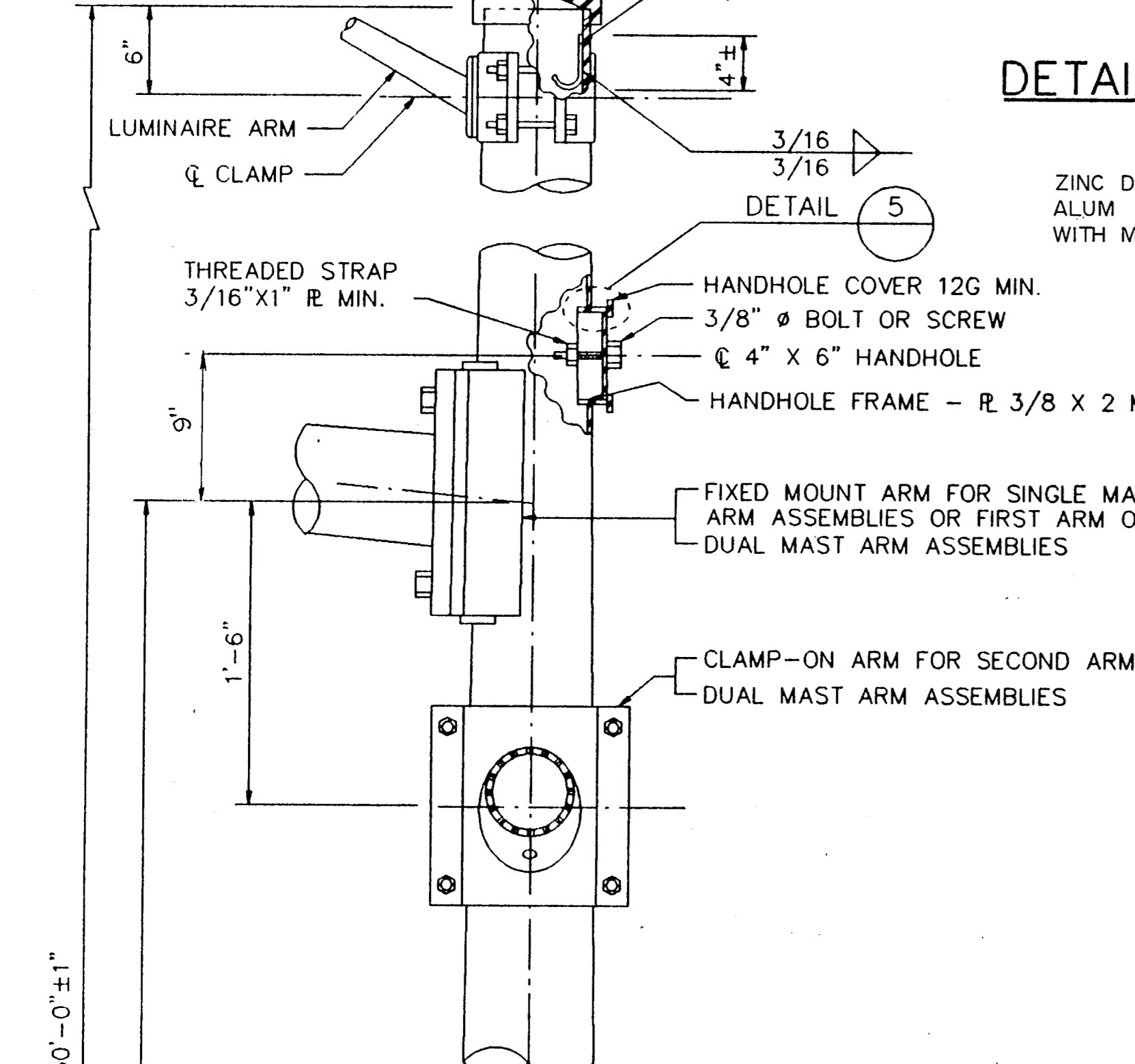
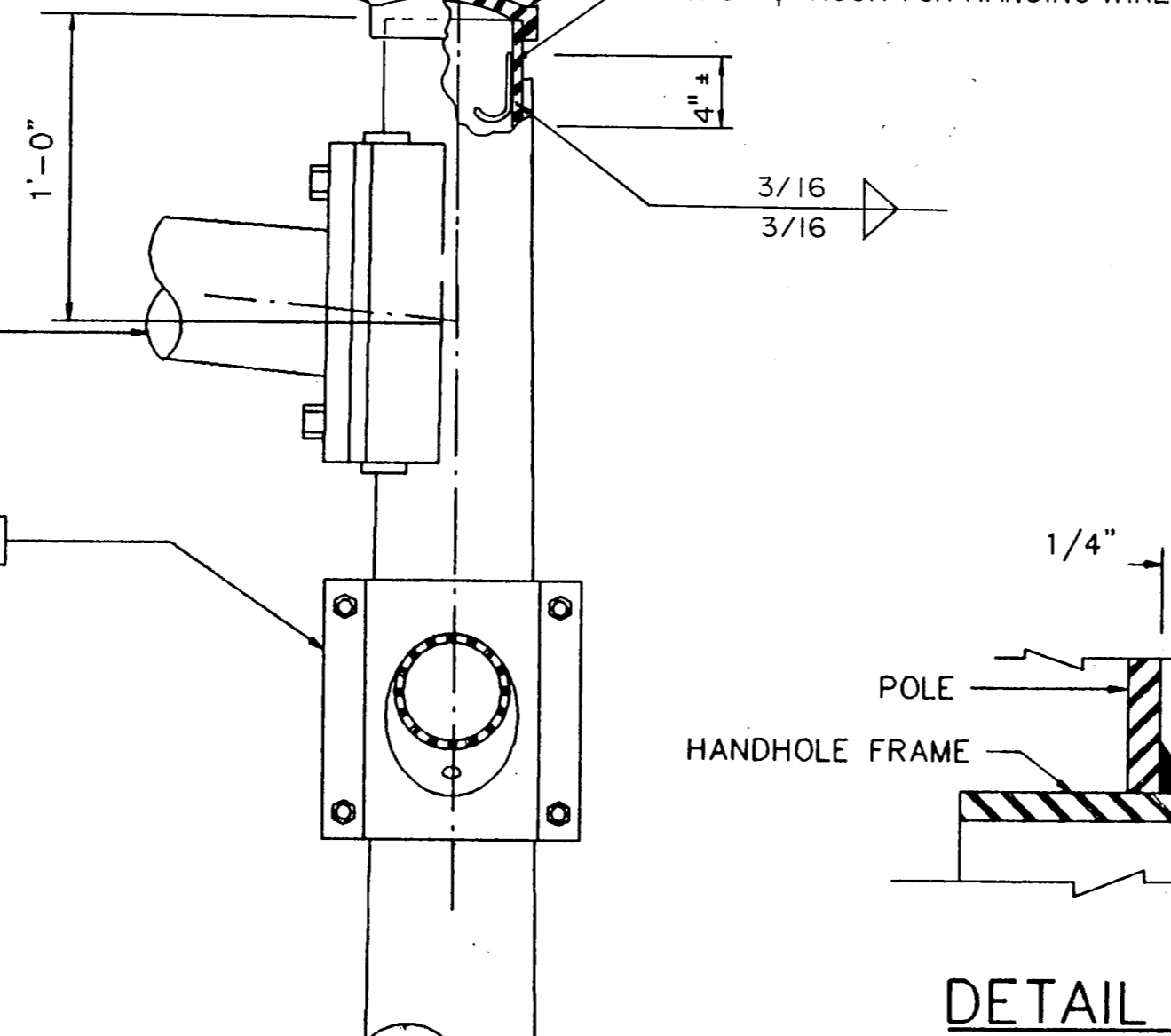


ZINC DIE CAST OR ALUM. OR GALV. METAL CAP WITH MIN. OF 3 SET SCREWS

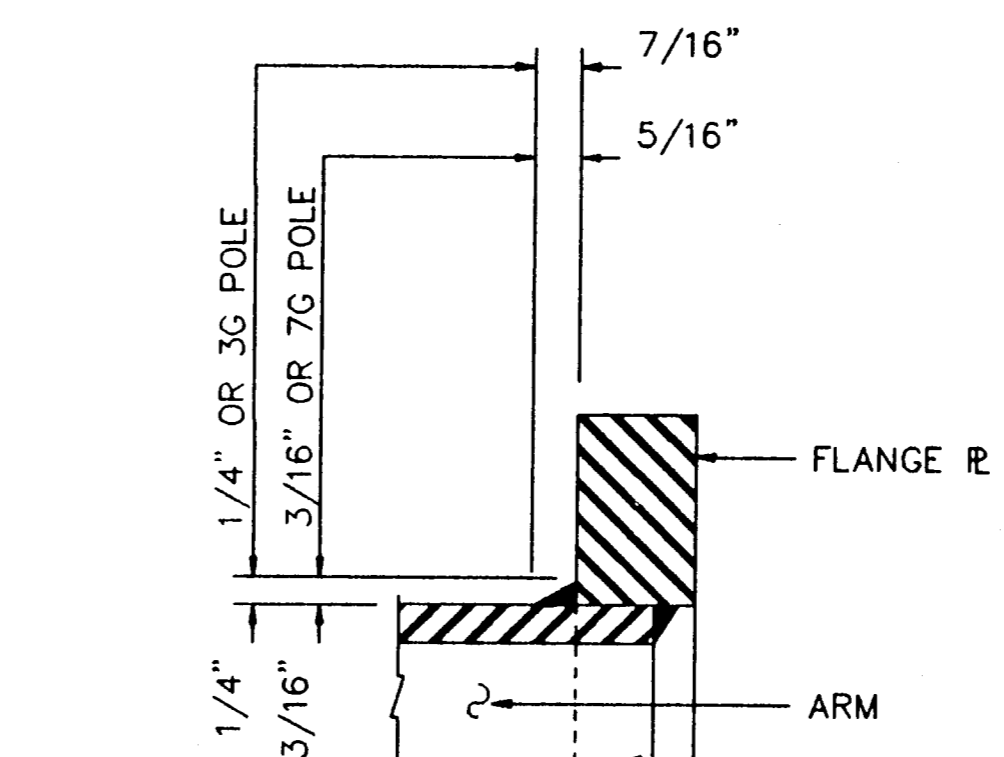


DETAIL 1

ZINC DIE CAST OR ALUM. OR GALV. METAL CAP WITH MIN. OF 3 SET SCREWS



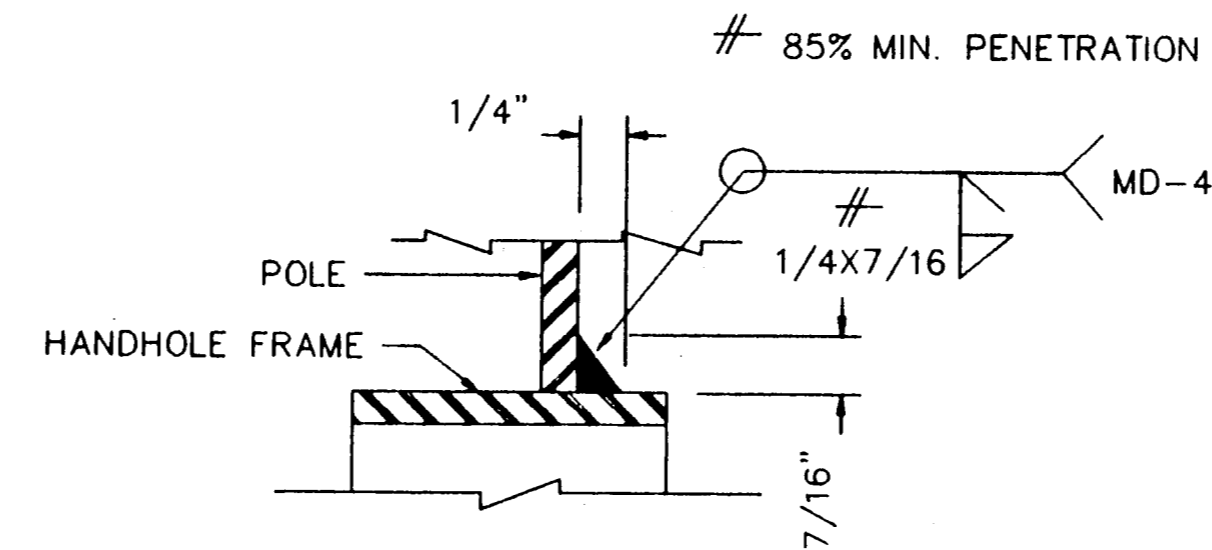
DETAIL 3 (FOR POLE WITHOUT LUMINAIRE)



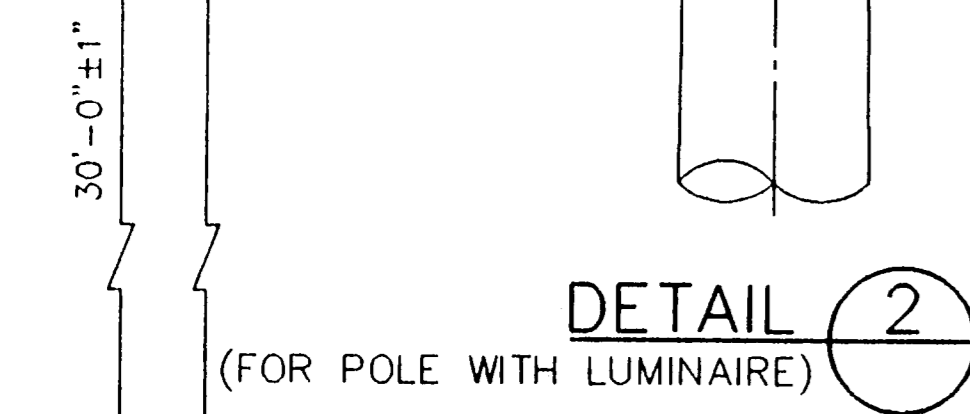
ARM BASE WELD DETAILS

MATERIALS	
ROUND SHAFTS	ASTM A595 GRA, ASTM A570 GR50
PLATES (1)	ASTM A36 OR A572 GR50 OR A595 (2) OR A36M50
CONNECTION BOLTS	ASTM A325 EXCEPT WHERE NOTED
PIN BOLTS	ASTM A325
PIPE	ASTM A53 GR A OR B, OR A501
MISC. HARDWARE	GALVANIZED STEEL OR STAINLESS OR AS NOTED

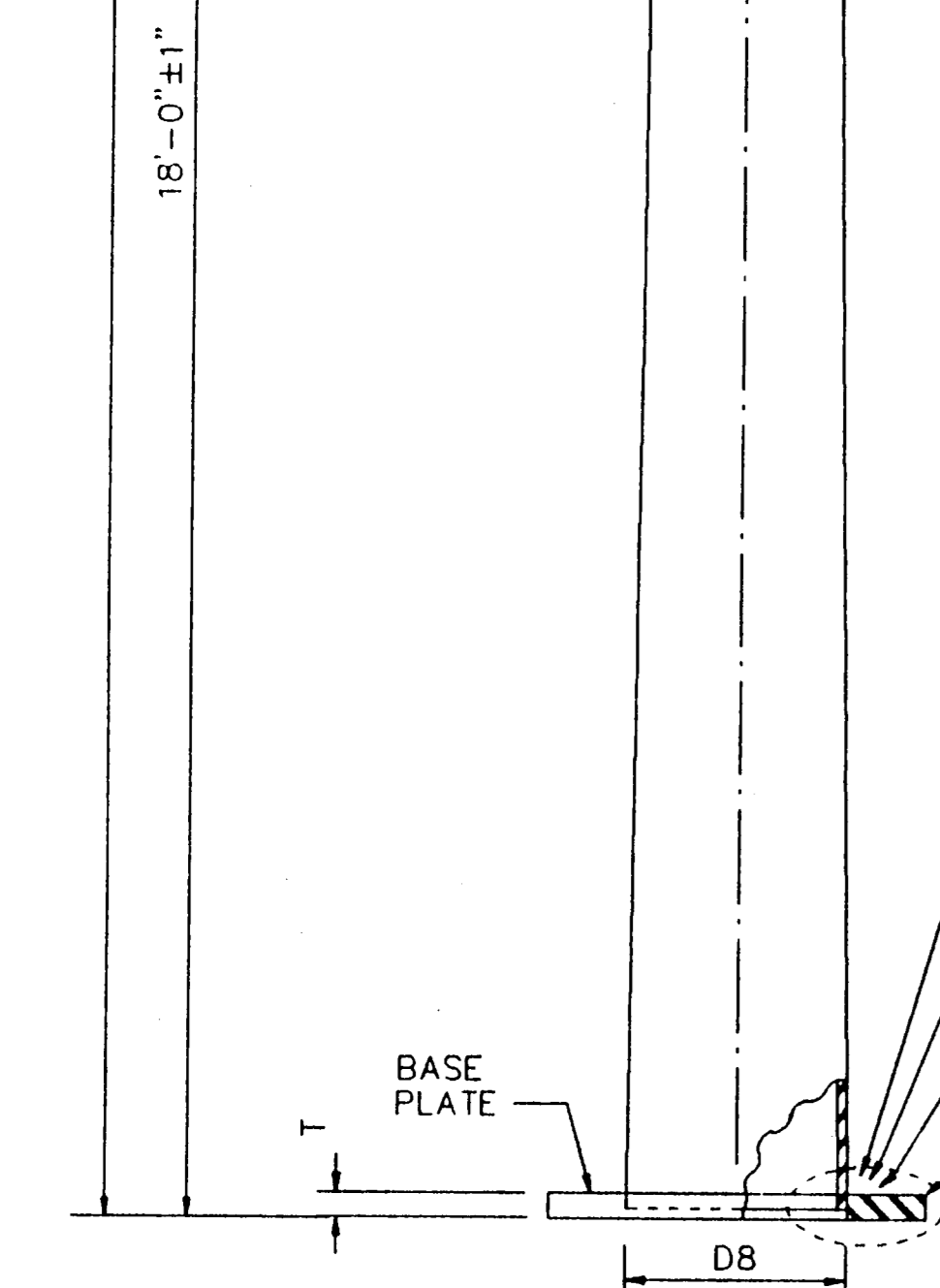
- (1) ANY OF THE MATERIALS LISTED FOR PLATES MAY BE USED WHERE THE DRAWINGS DO NOT SPECIFY A PARTICULAR GRADE DESIGNATION.
- (2) IF A595 MATERIAL IS USED, IT NEED NOT BE COLD WORKED TO A595 REQUIREMENTS, BUT MATERIALS MUST HAVE 40 KSI MINIMUM YIELD PRIOR TO FABRICATION.



DETAIL 5

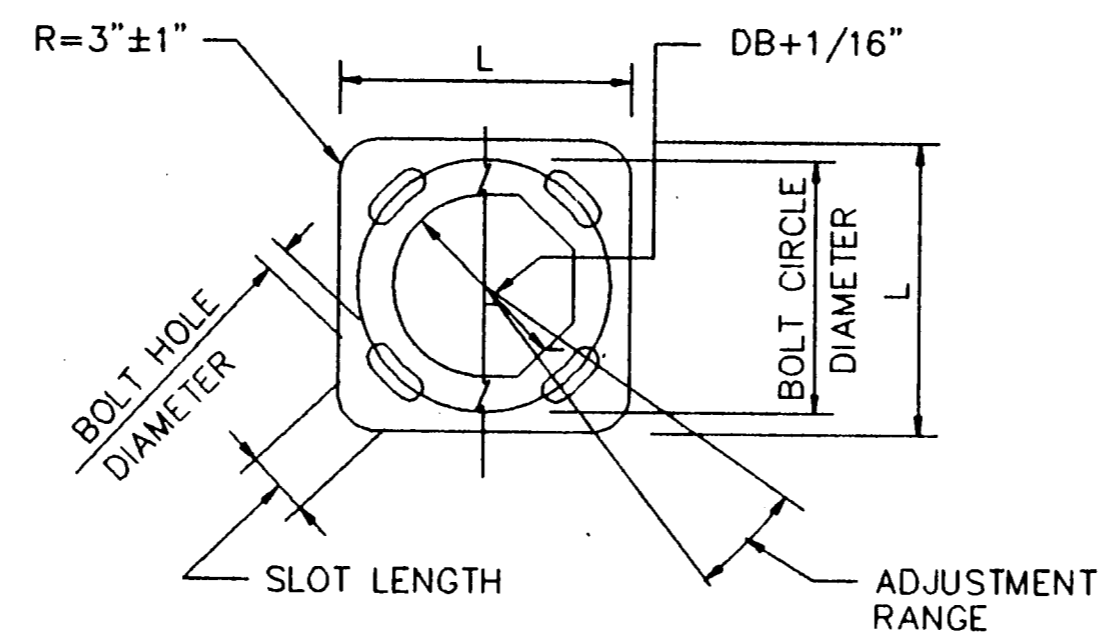


DETAIL 2 (FOR POLE WITH LUMINAIRE)

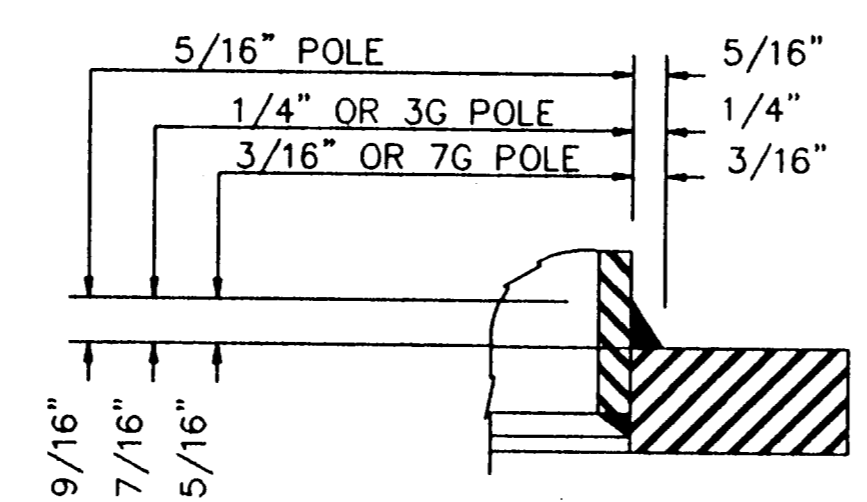


POLE ELEVATION

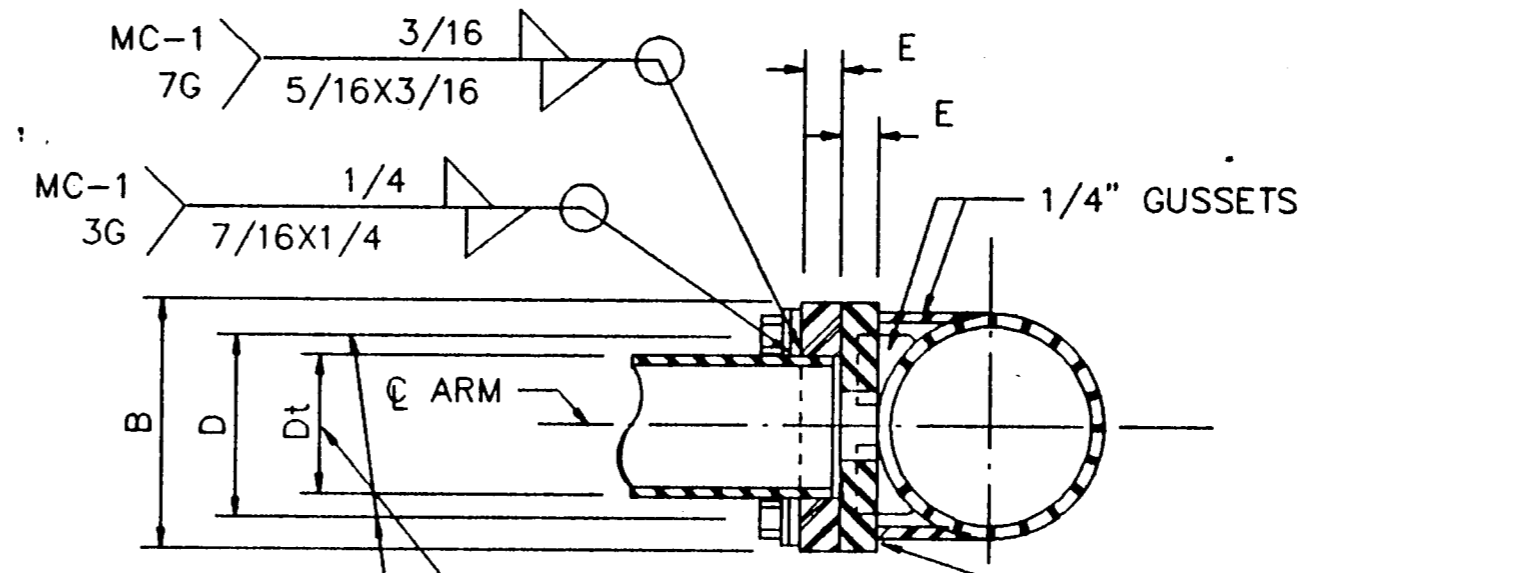
- MD-3 @ 5/16" POLE (5/16 x 5/16)
- MD-3 @ 1/4" OR 3G POLE (1/4 x 7/16 x 1/4)
- MD-3 @ 3/16" OR 7G POLE (3/16 x 5/16 x 3/16)



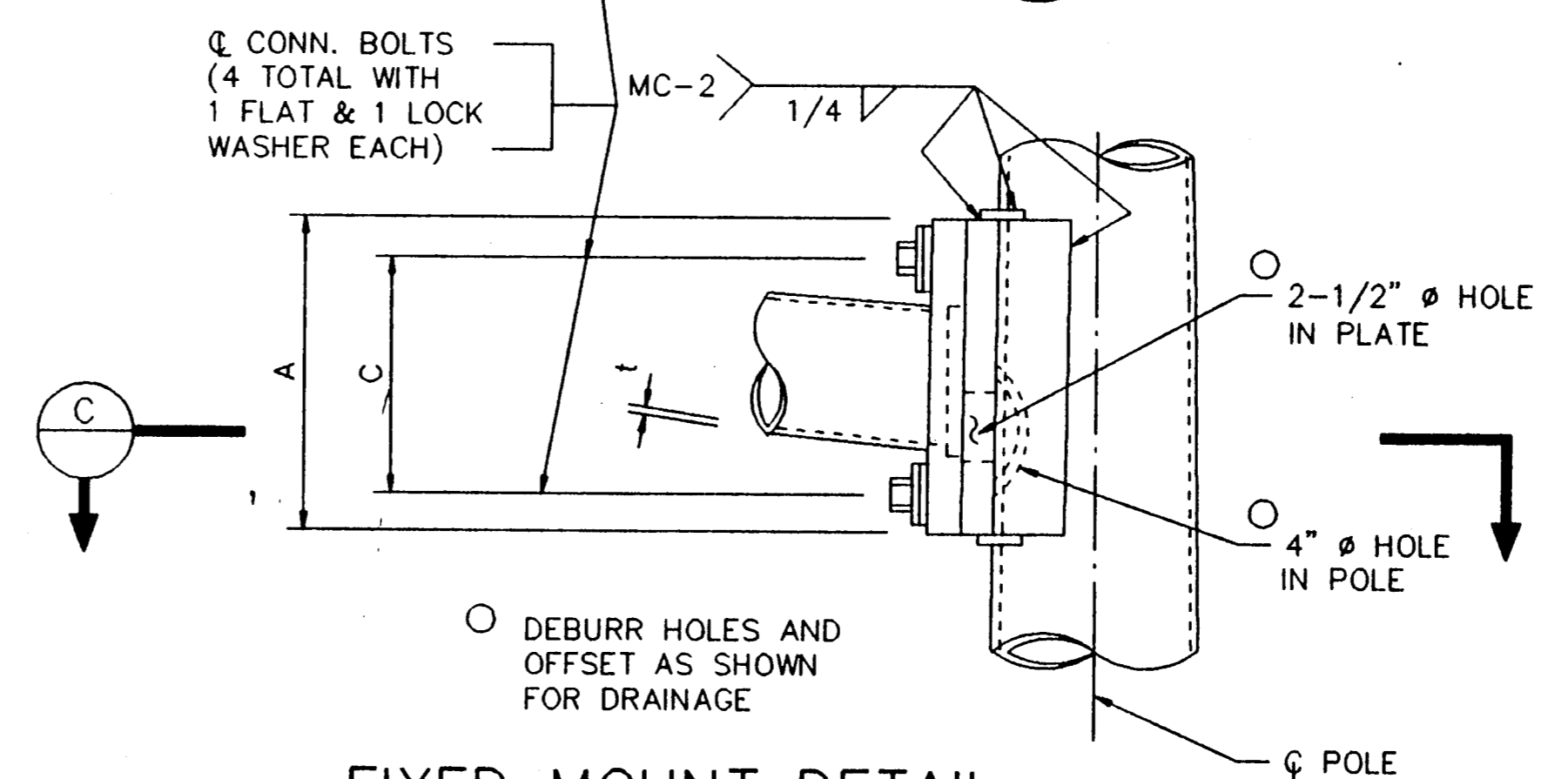
BASE PLATE PLAN



DETAIL 4



SECTION C



FIXED MOUNT DETAIL

GENERAL NOTES:
 CLAMP-ON DETAILS ARE USED FOR THE SECOND ARM ON DUAL MAST ARM ASSEMBLIES. A MAXIMUM 1-1/2" WIDE VERTICAL SLOTTED HOLE MAY BE CUT IN THE FRONT CLAMP PLATE TO FACILITATE DRAINAGE DURING GALVANIZING. THE SLOT SHALL BE CENTERED BEHIND THE ARM AND SHALL BE NO LONGER THAN THE ARM DIAMETER MINUS 1".
 FIXED MOUNT DETAILS ARE USED FOR SINGLE MAST ARM ASSEMBLIES AND FOR THE FIRST ARM ON DUAL MAST ARM ASSEMBLIES.
 WHERE DUPLICATE PARTS OCCUR ON DETAIL, WELDS SHOWN FOR ONE PART SHALL APPLY TO ALL SIMILAR PARTS ON THE DETAIL.
 PIN BOLTS ARE REQUIRED TO PREVENT ROTATION OF CLAMP-ON ARMS UNDER DESIGN WIND FORCES.
 ALL POLES ARMS & METAL HARDWARE TO BE PAINTED "BRUSHING BROWN".
 FIELD DRILLED HOLES ON SHAFT OR MAST ARM FOR CABLE ROUTING SHALL BE PRIMED AND PAINTED AS REQUIRED AND HAVE APPROPRIATE SIZED RUBBER GROMMET FITTED FOR PASSAGE OF WIRING.

ARM SIZE	A	B	C	D	E	CONN. BOLT DIAM.
6.5	.179	12	9	9	6	1
7.5	.179	13	9	10	6	1
8.0	.179	14	10	11	7	1-1/4
9.0	.179	16	11	13	8	1-1/4
9.5	.179	17	12	14	9	1-1/4
9.5	.239	18	12	15	9	1-1/4
10.0	.239	18	12	15	9	1-1/4
10.5	.239	18	13	15	10	1-1/2
11.0	.239	18	13	15	10	1-1/2

NOTE: MAST ARM ASSEMBLY FOR THIS PROJECT IS A SINGLE MAST ARM ASSEMBLY WITHOUT LUMINAIRE

AS BUILTS
 I CERTIFY THIS PROJECT WAS CONSTRUCTED IN GENERAL CONFORMANCE WITH THESE CONSTRUCTION PLANS AND WILL FUNCTION AS DESIGNED.

LAWRENCE A. CATES & ASSOC.
 CONSULTING ENGINEERS
 DALLAS, TEXAS

MAST ARM MOUNTING DETAILS						
BELTLINE RD. EAST OF MARSH LN.						
TOWN OF ADDISON, TEXAS						
LAWRENCE A. CATES & ASSOC. CONSULTING ENGINEERS DALLAS, TEXAS						
DESIGN	DRAWN	DATE	SCALE	NOTES	FILE	NO.
LAC	LAC	8/24/92	NTS		92023	T4