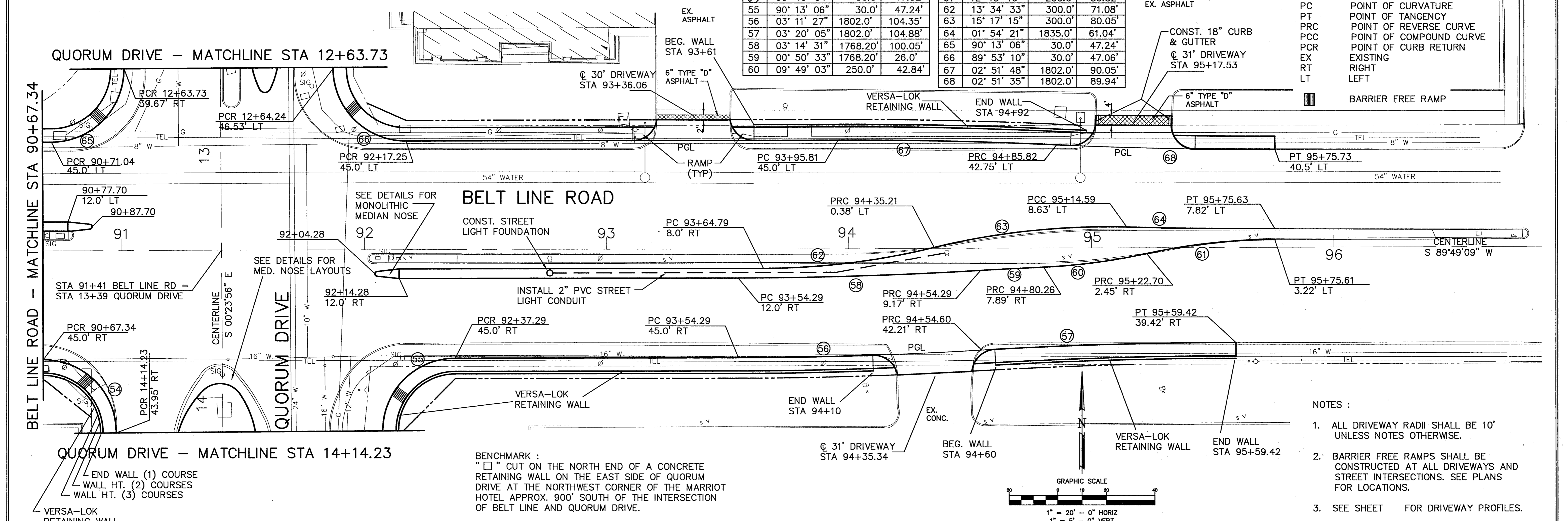


CURVE TABLE

NO.	DELTA	RADIUS	LENGTH	NO.	DELTA	RADIUS	LENGTH
54	90° 45' 54"	30.0'	47.52'	61	12° 13' 10"	250.0'	53.32'
55	90° 13' 06"	30.0'	47.24'	62	13° 34' 33"	300.0'	71.08'
56	03° 11' 27"	1802.0'	104.35'	63	15° 17' 15"	300.0'	80.05'
57	03° 20' 05"	1802.0'	104.88'	64	01° 54' 21"	1835.0'	61.04'
58	03° 14' 31"	1768.20'	100.05'	65	90° 13' 06"	30.0'	47.24'
59	00° 50' 33"	1768.20'	26.0'	66	89° 53' 10"	30.0'	47.06'
60	09° 49' 03"	250.0'	42.84'	67	02° 51' 48"	1802.0'	90.05'
				68	02° 51' 35"	1802.0'	89.94'

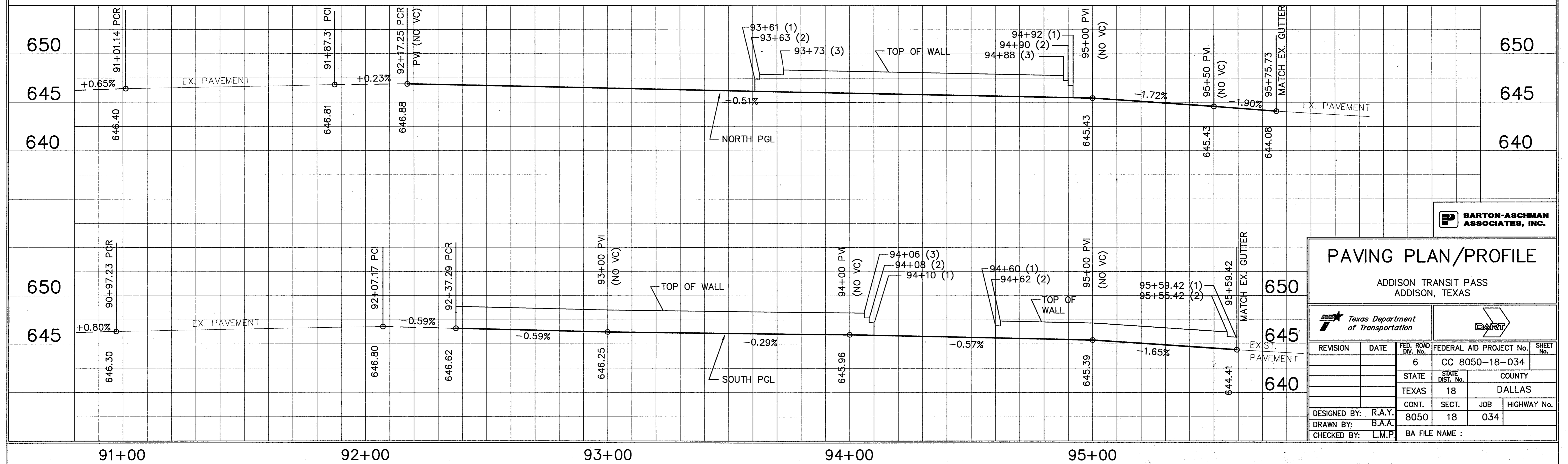
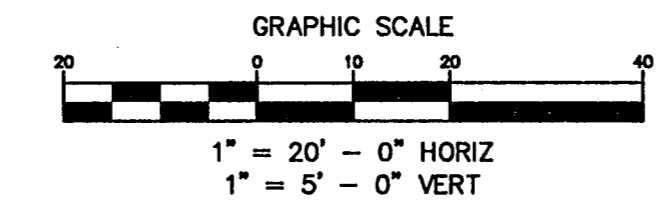
LEGEND :

- PGL PROFILE GRADE LINE
- PC POINT OF CURVATURE
- PT POINT OF TANGENCY
- PRC POINT OF REVERSE CURVE
- PCC POINT OF COMPOUND CURVE
- PCR POINT OF CURB RETURN
- EX EXISTING
- RT RIGHT
- LT LEFT
- BARRIER FREE RAMP



NOTES :

1. ALL DRIVEWAY RADII SHALL BE 10' UNLESS NOTES OTHERWISE.
2. BARRIER FREE RAMPS SHALL BE CONSTRUCTED AT ALL DRIVEWAYS AND STREET INTERSECTIONS. SEE PLANS FOR LOCATIONS.
3. SEE SHEET FOR DRIVEWAY PROFILES.



BARTON-ASCHMAN ASSOCIATES, INC.

PAVING PLAN/PROFILE

ADDISON TRANSIT PASS
ADDISON, TEXAS

Texas Department of Transportation

REVISION	DATE	FED. ROAD DIV. No.	FEDERAL AID PROJECT No.	SHEET No.
		6	CC 8050-18-034	
		STATE	STATE DIST. No.	COUNTY
		TEXAS	18	DALLAS
		CONT.	SECT.	JOB
		8050	18	034
DESIGNED BY: R.A.Y.		BA FILE NAME :		
DRAWN BY: B.A.A.				
CHECKED BY: L.M.P.				