

CITY OF ADDISON

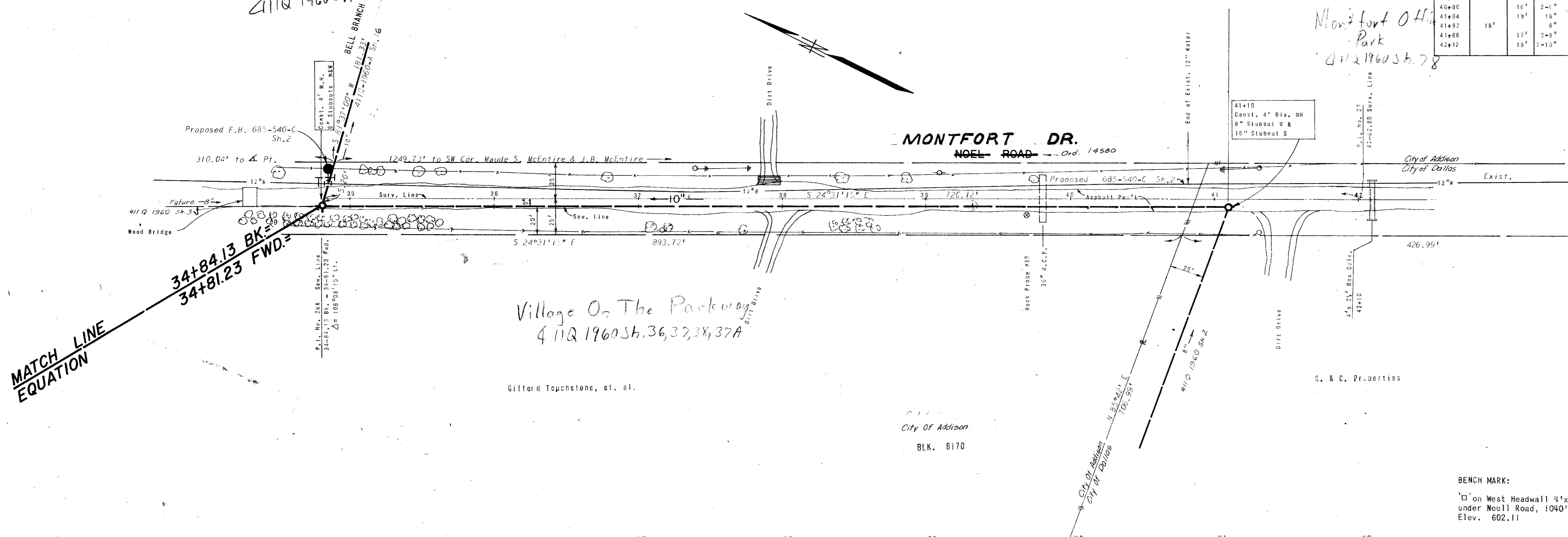
ABST. 157

Maude S. McEntire

STA.	LT.	RT.	SIZE	VARIETY
35+05	23'		2-6"	HACKBERRY
35+05	25'		6"	ELM
35+10	25'		2-6"	HACKBERRY
35+15	23'		6"	HACKBERRY
35+23	23'		7"	HACKBERRY
35+48	23'		5"	HACKBERRY
35+54	24'		3-4"	HACKBERRY
35+74	24'		4"	HACKBERRY
35+80	20'		5-8"	HACKBERRY
37+08			15'	SYCAMORE
37+20			15'	HACKBERRY
37+74			13'	HACKBERRY
37+87			13'	HACKBERRY
38+14			8"	HACKBERRY
38+41			14'	HACKBERRY
38+41	20'		20"	HACKBERRY
38+58			14'	ELM
38+87	19'		8"	PECAN
39+70	16'		5-6"	PECAN
40+00			16"	HACKBERRY
40+20			19"	ELM
40+41			17"	ELM
40+80			16"	HACKBERRY
41+84			18"	HACKBERRY
41+82	18'		8"	PECAN
41+86			17'	BOIS D'ARC
42+12			18'	HACKBERRY

Prestonwood Junction Center  
411Q 1960 Sh. 26, 77

Montfort Office  
Park  
411Q 1960 Sh. 78

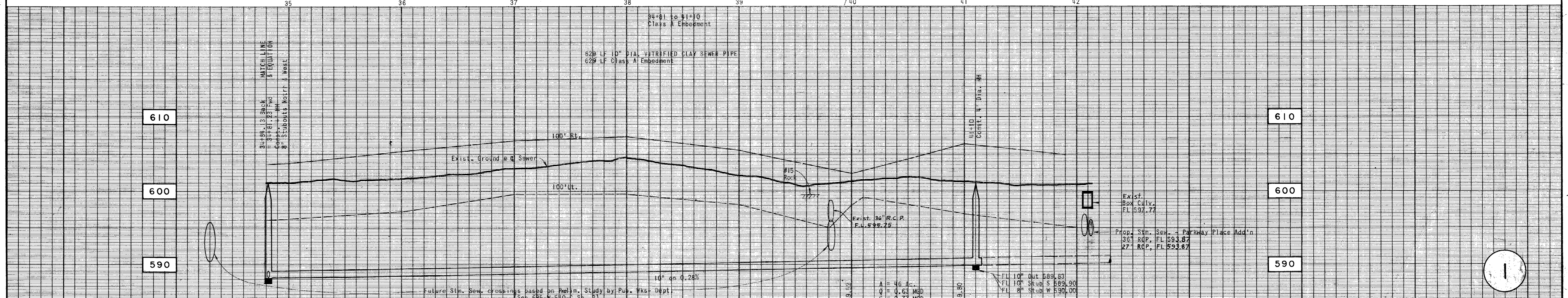


Gifford Topstone, et. al.

City of Addison  
BLK. 8170

BENCH MARK:

□ on West Headwall 4'x2.25' Conc. Culv.  
under Noel Road, 1040'± NW of Q Celestial Road.  
Elev. 602.11



PROJECT: Montfort Office Park

DESIGN BY: Walter Z. Albritton DATE: 11-14-70

R.O.W. APPROVED: H. L. [Signature]

ENGINEER OF DESIGN: Walter Z. Albritton DATE: 12-2-70

WATER UTILITIES DEPT. DALLAS, TEXAS

CONTRACT: 70-192-P-2 Cullum ~ 10-14-70

DEVELOPER: **G & C PROPERTIES, Inc.**  
2912 MacARTHUR BLVD. IRVING, TEXAS 75060 Ph 265-4101

**ALBRITTON & ASSOCIATES, INC.**  
CONSULTING ENGINEERS  
404 U.C.C. BLDG. 741-4884  
DALLAS, TEXAS 75207

NOELL ROAD SANITARY SEWER					
DALLAS WATER UTILITIES DEPT. CITY OF DALLAS, TEXAS					
DESIGN	DRAWN	DATE	SCALE	NOTES	FILE NO.
G.W.F.	S.D.J.	June, 1970	1"=40'H 1"=6'V		411-Q 1960