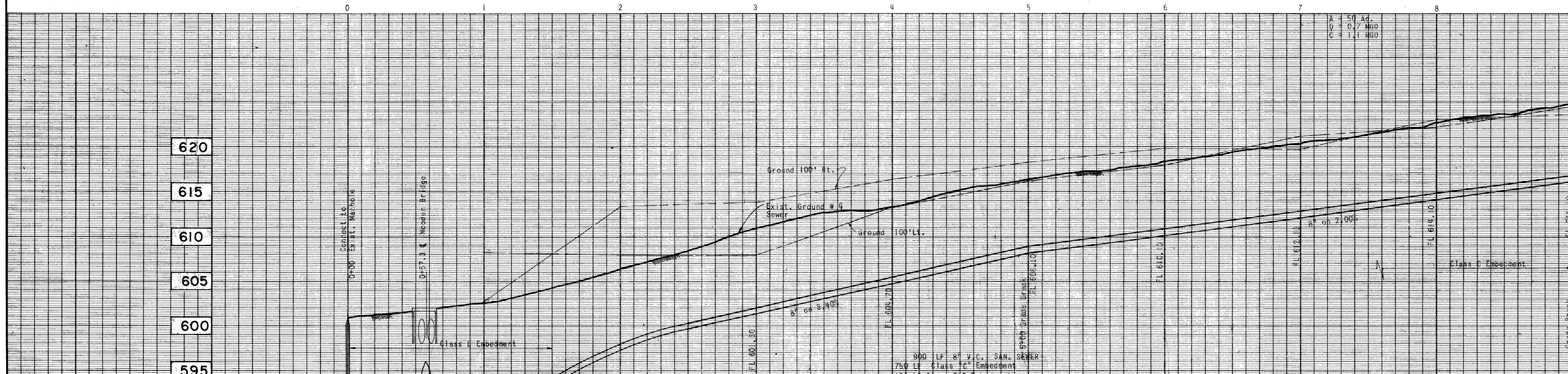
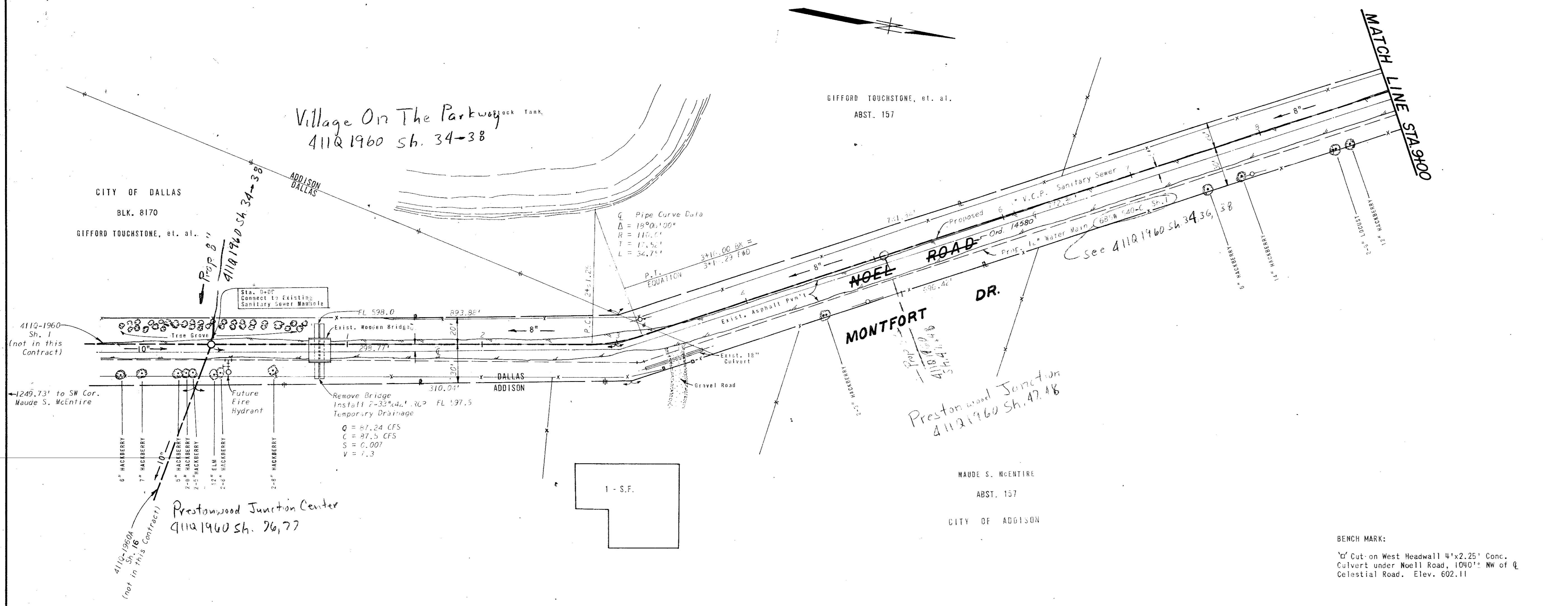


GIFFORD TOUCHSTONE, et. al.
ABST. 157

Village On The Parkway
411Q 1960 Sh. 34-38

CITY OF DALLAS
BLK. 8170
GIFFORD TOUCHSTONE, et. al.

MATCH LINE
STA 9+00



BENCH MARK:
Cut-on West Headwall 4'x2.25' Conc.
Culvert under Noel Road, 1040' NW of Q
Celestial Road. Elev. 602.11

PROJECT: LOPER COMPANY
DESIGN BY: *Walter J. Albritton* DATE: 10-9-70
R.O.W. APPROVED: *John P. ...* DATE: 4-23-71
ENGINEER OF DESIGN: *Walter J. Albritton* DATE: 4-23-71
WATER UTILITIES DEPT. DATE: 4-23-71
CONTRACT NO. 71-98-P-CULLUM - 4-12-71

ALBRITTON & ASSOCIATES, INC.
CONSULTING ENGINEERS
404 UCC BLDG. 741-4884
DALLAS, TEXAS 75207
BY: *Walter J. Albritton P.E.*

PROPOSED SANITARY SEWER NOELL ROAD AND BELT LINE ROAD DALLAS WATER UTILITIES DEPT. CITY OF DALLAS, TEXAS						
DESIGN	DRAWN	DATE	SCALE	NOTES	FILE	NO.
D.E.W.	G.C.B.	AUG, 70	Horiz. 1"=40' Vert. 1"=6'		411 Q	1960