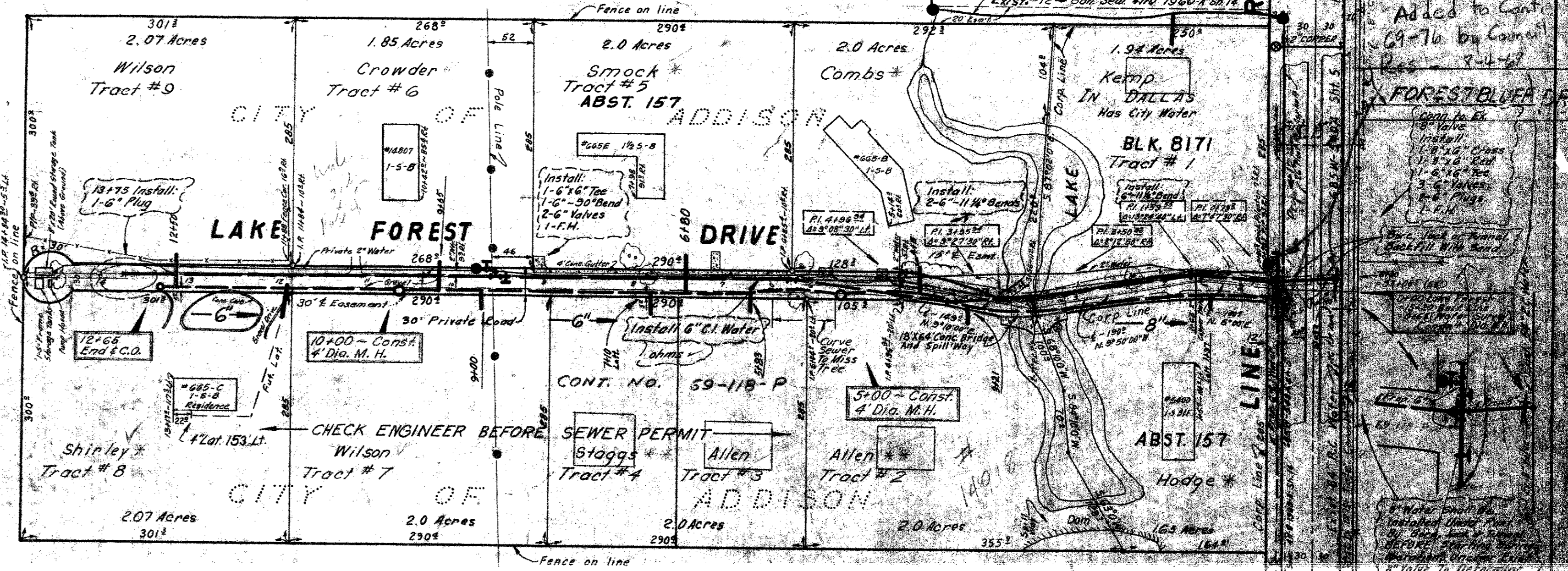


STATION	LT.	RT.	DESCRIPTION
2+85	1/2"	0"	6" Cedar
2+86	5/8"	0"	6" Cedar
2+87	1"	0"	6" Cedar
2+88	1 1/8"	0"	6" Cedar
2+89	1 1/4"	0"	6" Cedar
2+90	1 1/2"	0"	6" Cedar
2+91	1 3/4"	0"	6" Cedar
2+92	1 7/8"	0"	6" Cedar
2+93	2"	0"	6" Cedar
2+94	2 1/8"	0"	6" Cedar
2+95	2 1/4"	0"	6" Cedar
2+96	2 1/2"	0"	6" Cedar
2+97	2 3/4"	0"	6" Cedar
2+98	2 7/8"	0"	6" Cedar
2+99	3"	0"	6" Cedar
2+100	3 1/8"	0"	6" Cedar
2+101	3 1/4"	0"	6" Cedar
2+102	3 1/2"	0"	6" Cedar
2+103	3 3/4"	0"	6" Cedar
2+104	3 7/8"	0"	6" Cedar
2+105	4"	0"	6" Cedar
2+106	4 1/8"	0"	6" Cedar
2+107	4 1/4"	0"	6" Cedar
2+108	4 1/2"	0"	6" Cedar
2+109	4 3/4"	0"	6" Cedar
2+110	4 7/8"	0"	6" Cedar
2+111	5"	0"	6" Cedar
2+112	5 1/8"	0"	6" Cedar
2+113	5 1/4"	0"	6" Cedar
2+114	5 1/2"	0"	6" Cedar
2+115	5 3/4"	0"	6" Cedar
2+116	5 7/8"	0"	6" Cedar
2+117	6"	0"	6" Cedar
2+118	6 1/8"	0"	6" Cedar
2+119	6 1/4"	0"	6" Cedar
2+120	6 1/2"	0"	6" Cedar
2+121	6 3/4"	0"	6" Cedar
2+122	6 7/8"	0"	6" Cedar
2+123	7"	0"	6" Cedar
2+124	7 1/8"	0"	6" Cedar
2+125	7 1/4"	0"	6" Cedar
2+126	7 1/2"	0"	6" Cedar
2+127	7 3/4"	0"	6" Cedar
2+128	7 7/8"	0"	6" Cedar
2+129	8"	0"	6" Cedar
2+130	8 1/8"	0"	6" Cedar
2+131	8 1/4"	0"	6" Cedar
2+132	8 1/2"	0"	6" Cedar
2+133	8 3/4"	0"	6" Cedar
2+134	8 7/8"	0"	6" Cedar
2+135	9"	0"	6" Cedar
2+136	9 1/8"	0"	6" Cedar
2+137	9 1/4"	0"	6" Cedar
2+138	9 1/2"	0"	6" Cedar
2+139	9 3/4"	0"	6" Cedar
2+140	9 7/8"	0"	6" Cedar
2+141	10"	0"	6" Cedar
2+142	10 1/8"	0"	6" Cedar
2+143	10 1/4"	0"	6" Cedar
2+144	10 1/2"	0"	6" Cedar
2+145	10 3/4"	0"	6" Cedar
2+146	10 7/8"	0"	6" Cedar
2+147	11"	0"	6" Cedar
2+148	11 1/8"	0"	6" Cedar
2+149	11 1/4"	0"	6" Cedar
2+150	11 1/2"	0"	6" Cedar
2+151	11 3/4"	0"	6" Cedar
2+152	11 7/8"	0"	6" Cedar
2+153	12"	0"	6" Cedar
2+154	12 1/8"	0"	6" Cedar
2+155	12 1/4"	0"	6" Cedar
2+156	12 1/2"	0"	6" Cedar
2+157	12 3/4"	0"	6" Cedar
2+158	12 7/8"	0"	6" Cedar
2+159	13"	0"	6" Cedar
2+160	13 1/8"	0"	6" Cedar
2+161	13 1/4"	0"	6" Cedar
2+162	13 1/2"	0"	6" Cedar
2+163	13 3/4"	0"	6" Cedar
2+164	13 7/8"	0"	6" Cedar
2+165	14"	0"	6" Cedar
2+166	14 1/8"	0"	6" Cedar
2+167	14 1/4"	0"	6" Cedar
2+168	14 1/2"	0"	6" Cedar
2+169	14 3/4"	0"	6" Cedar
2+170	14 7/8"	0"	6" Cedar
2+171	15"	0"	6" Cedar
2+172	15 1/8"	0"	6" Cedar
2+173	15 1/4"	0"	6" Cedar
2+174	15 1/2"	0"	6" Cedar
2+175	15 3/4"	0"	6" Cedar
2+176	15 7/8"	0"	6" Cedar
2+177	16"	0"	6" Cedar
2+178	16 1/8"	0"	6" Cedar
2+179	16 1/4"	0"	6" Cedar
2+180	16 1/2"	0"	6" Cedar
2+181	16 3/4"	0"	6" Cedar
2+182	16 7/8"	0"	6" Cedar
2+183	17"	0"	6" Cedar
2+184	17 1/8"	0"	6" Cedar
2+185	17 1/4"	0"	6" Cedar
2+186	17 1/2"	0"	6" Cedar
2+187	17 3/4"	0"	6" Cedar
2+188	17 7/8"	0"	6" Cedar
2+189	18"	0"	6" Cedar
2+190	18 1/8"	0"	6" Cedar
2+191	18 1/4"	0"	6" Cedar
2+192	18 1/2"	0"	6" Cedar
2+193	18 3/4"	0"	6" Cedar
2+194	18 7/8"	0"	6" Cedar
2+195	19"	0"	6" Cedar
2+196	19 1/8"	0"	6" Cedar
2+197	19 1/4"	0"	6" Cedar
2+198	19 1/2"	0"	6" Cedar
2+199	19 3/4"	0"	6" Cedar
2+200	19 7/8"	0"	6" Cedar
2+201	20"	0"	6" Cedar
2+202	20 1/8"	0"	6" Cedar
2+203	20 1/4"	0"	6" Cedar
2+204	20 1/2"	0"	6" Cedar
2+205	20 3/4"	0"	6" Cedar
2+206	20 7/8"	0"	6" Cedar
2+207	21"	0"	6" Cedar
2+208	21 1/8"	0"	6" Cedar
2+209	21 1/4"	0"	6" Cedar
2+210	21 1/2"	0"	6" Cedar
2+211	21 3/4"	0"	6" Cedar
2+212	21 7/8"	0"	6" Cedar
2+213	22"	0"	6" Cedar
2+214	22 1/8"	0"	6" Cedar
2+215	22 1/4"	0"	6" Cedar
2+216	22 1/2"	0"	6" Cedar
2+217	22 3/4"	0"	6" Cedar
2+218	22 7/8"	0"	6" Cedar
2+219	23"	0"	6" Cedar
2+220	23 1/8"	0"	6" Cedar
2+221	23 1/4"	0"	6" Cedar
2+222	23 1/2"	0"	6" Cedar
2+223	23 3/4"	0"	6" Cedar
2+224	23 7/8"	0"	6" Cedar
2+225	24"	0"	6" Cedar

Weldon Edward Combs & Anno D. Combs 4-25-69  
 15' Strip Easement along East side of property, see Instrument  
 The City of Dallas shall have right to remove or harm  
 any tree described in tree list and located on said  
 property without written permission of owners  
 From Sta. 4+00 to 6+12  
 Blk - 8171, Abst - 137  
 The City of Dallas shall be responsible for  
 installing 6" water on East side of street  
 C.O. ~ 60-3493  
 Vol. ~ 69123 Pg. 114, 115, 116, 117  
 Date ~ June 24, 1969

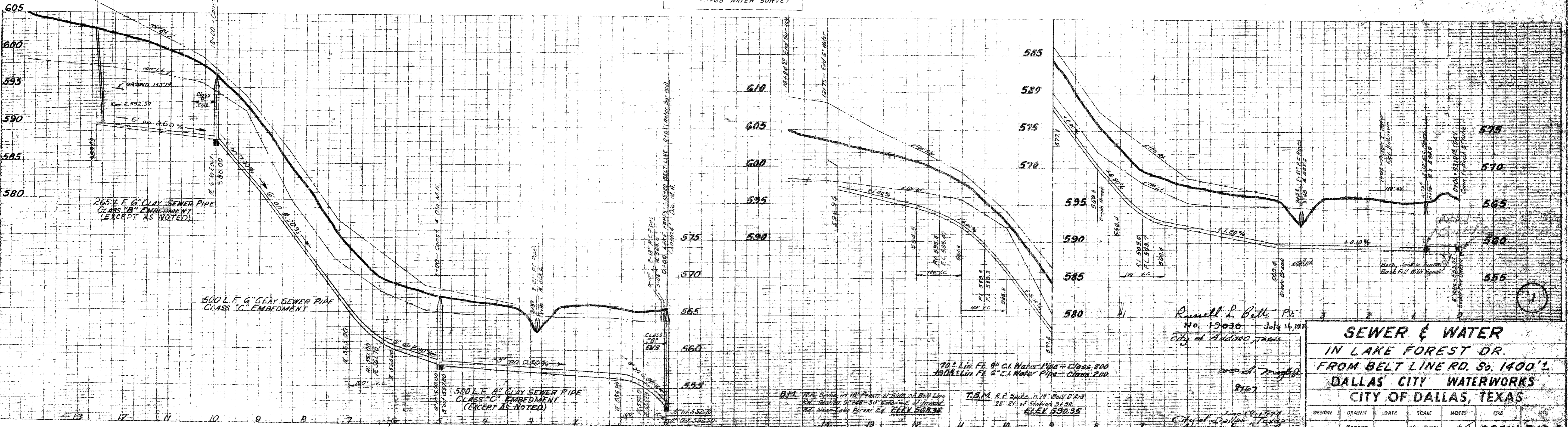


LAKE FOREST DRIVE Dedicated

Philip Edward Wilson, Homer L. Kemp, Rena A. Kemp, 4-25-69  
 John B. Allen, Virginia E. Allen, Kenneth L. Stagg's  
 Priscilla Stagg's, S. D. Stagg's, Jr., Jean C. Smock  
 Frank L. Stagg's, Warren W. Stagg's, John L. Shirley,  
 15-130' Easement from Sta. 4+00 to 14+84.40  
 Blk - 8171, Abst - 137  
 C.O. ~ 60-3493  
 Vol. ~ 69123 Pg. 110, 113, 114, 115  
 Date ~ June 24, 1969

355' ±  
 5' ± 0.5  
 TAKES  
 2" ON 1.00%  
 15' ON 0.2%  
 1200' TO NW 1/4 E  
 ROCK INT. SWR.

APPROX. 0+00 SANITARY SEWER  
 TO 65 WATER SURVEY



Russell P. Butts P.E.  
 No. 19030 July 16, 1969  
 City of Addison, Texas

**SEWER & WATER  
 IN LAKE FOREST DR.  
 FROM BELT LINE RD. So. 1400' ±  
 DALLAS CITY WATERWORKS  
 CITY OF DALLAS, TEXAS**

DESIGN	DRAWN	DATE	SCALE	NOTES	FILE	NO.
Compton	Rogers Parrish	Dec '68	1/4" = 1'-0"	Ver. 1'-6"	685W	540-E

City of Dallas, Texas  
 June 24, 1969  
 6" San. Sew. by Water Design Sec. Sept. '73