

STA.	LT.	RT.	SIZE	VARIETY
0+03	30"		12"	PECAN
0+15	22"		12"	PECAN
1+10	2"		19"	PECAN
1+23	12"		24"	PECAN
1+44	18"		12"	PECAN
1+51			12"	PECAN
1+76			12"	PECAN
2+53	0		12"	PECAN
3+30	32"		12"	PECAN
2+80	4"		18"	PECAN
3+21	4"		12"	PECAN
3+23	21"		3-12"	PECAN
3+45	20"		8"	PECAN
4+00	4"		18"	PECAN
4+22	22"		12"	PECAN
4+50	18"		10"	PECAN
5+20	19"		10"	PECAN

STA.	LT.	RT.	SIZE	VARIETY
0+75	10"		8"	ELM
7+18	27"		10"	ELM
8+17	14"		12"	ELM
8+53	17"		8"	HACKBERRY
9+47	22"		8"	HACKBERRY
10+05	17"		8"	HACKBERRY
10+80	24"		10"	CEDAR
11+17	20"		8"	HACKBERRY
11+50	20"		2-2"	PECAN
11+50	12"		8"	CEDAR
11+55	17"		36"	BOIS D'ARC

Easement Release
 J.H. Orpen Nov 11, 1975
 Release 15' Sanit. Sew. Esmt.
 Blk. 8171
 C.O. - 75-3340
 Vol. 75227 Pg. 102, 103 Date - Nov. 19, 1975

CLUB INVESTORS INC.
 ABST. 157
 BLK. 8172
 CITY OF DALLAS

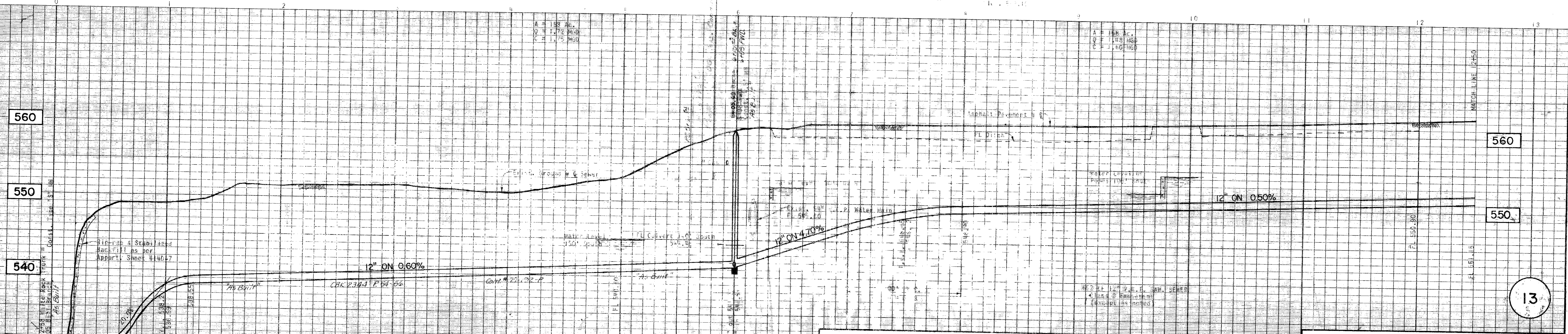
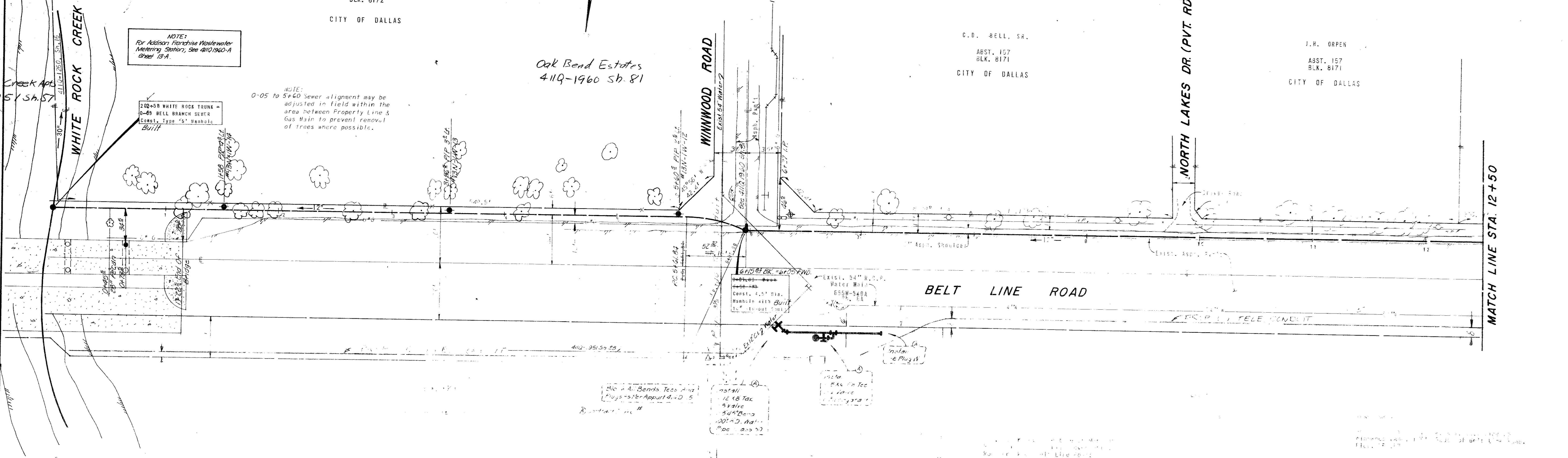
C.D. BELL, SR.
 ABST. 157
 BLK. 8171
 CITY OF DALLAS

J.H. ORPEN
 ABST. 157
 BLK. 8171
 CITY OF DALLAS

NOTE:
 For Addison Franchise Wastewater
 Metering Station, see 410 1960-A
 Sheet 13-A.

NOTE:
 0-05 to 5+60 Sewer alignment may be
 adjusted in field within the
 area between Property Line &
 Gas Main to prevent removal
 of trees where possible.

Oak Bend Estates
 4119-1960 Sb. 81



PROJECT: BELL BRANCH SANITARY SEWER
 FROM WHITE ROCK CREEK TO NOELL RD.
 DATE: 11-14-70
 ENGINEER OF DESIGN: [Signature]
 DATE: 12-2-70
 BY: [Signature] P.E.

ALBRITTON & ASSOCIATES, INC.
 CONSULTING ENGINEERS
 404 U.C. BLDG. 741-4884
 DALLAS, TEXAS 75207

BELL BRANCH SANITARY SEWER FROM WHITE ROCK CREEK TO NOELL RD.					
DALLAS WATER UTILITIES DEPT. CITY OF DALLAS, TEXAS					
DESIGN	DRAWN	DATE	SCALE	NOTES	FILE NO.
G.W.F.	Q.D.W.	Sept, 1970	1" = 40' H. 1" = 6' V.		411-Q 1960A