

CITY OF DALLAS  
BLK. 8171

J.W. Womack

John B. Allen

CITY OF ADDISON

W.E. Combs

NORTH LAKES DRIVE

J.H. Orpen

Paul V. Hodge

H.L. Kemp

CITY OF DALLAS  
BLK. 8171

STA.	LT.	RT.	SIZE	VARIETY
13+50	12'	12'	6"	PECAN
13+50	14'	12'	6"	PECAN
13+50	16'	12'	6"	WICKORY
13+50	18'	12'	6"	PECAN
13+50	20'	12'	6"	WILLOW
13+50	22'	12'	6"	PECAN
13+50	24'	12'	6"	PECAN
13+50	26'	12'	6"	PECAN
13+50	28'	12'	6"	ELM
13+50	30'	12'	6"	PECAN
13+50	32'	12'	6"	PECAN
13+50	34'	12'	6"	PECAN
13+50	36'	12'	6"	PECAN
13+50	38'	12'	6"	PECAN
13+50	40'	12'	6"	PECAN
13+50	42'	12'	6"	PECAN
13+50	44'	12'	6"	PECAN
13+50	46'	12'	6"	PECAN
13+50	48'	12'	6"	PECAN
13+50	50'	12'	6"	PECAN
13+50	52'	12'	6"	PECAN
13+50	54'	12'	6"	PECAN
13+50	56'	12'	6"	PECAN
13+50	58'	12'	6"	PECAN
13+50	60'	12'	6"	PECAN
13+50	62'	12'	6"	PECAN
13+50	64'	12'	6"	PECAN
13+50	66'	12'	6"	PECAN
13+50	68'	12'	6"	PECAN
13+50	70'	12'	6"	PECAN
13+50	72'	12'	6"	PECAN
13+50	74'	12'	6"	PECAN
13+50	76'	12'	6"	PECAN
13+50	78'	12'	6"	PECAN
13+50	80'	12'	6"	PECAN
13+50	82'	12'	6"	PECAN
13+50	84'	12'	6"	PECAN
13+50	86'	12'	6"	PECAN
13+50	88'	12'	6"	PECAN
13+50	90'	12'	6"	PECAN
13+50	92'	12'	6"	PECAN
13+50	94'	12'	6"	PECAN
13+50	96'	12'	6"	PECAN
13+50	98'	12'	6"	PECAN
13+50	100'	12'	6"	PECAN

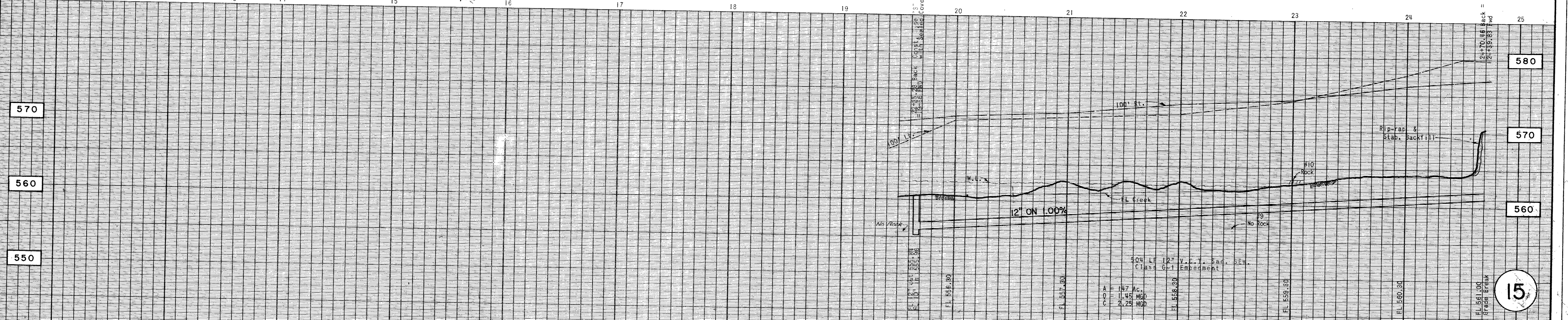
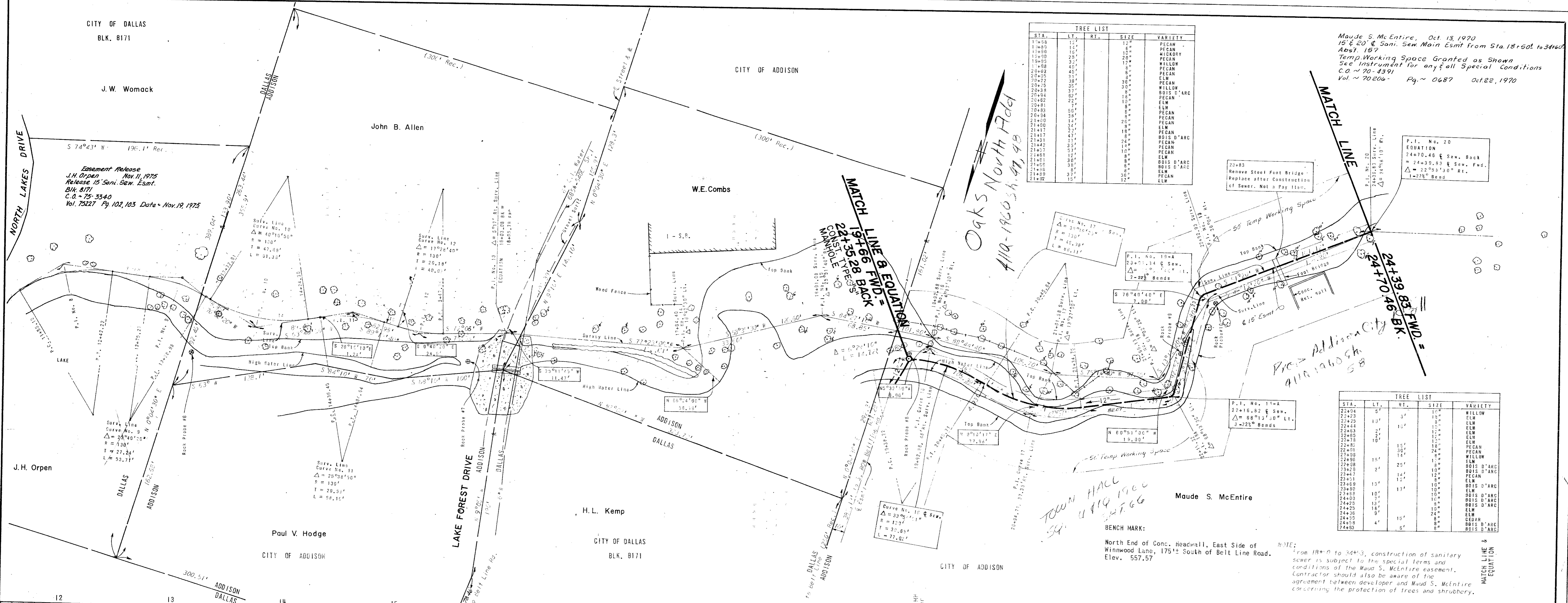
Maude S. McEntire, Oct 13, 1970  
15' x 20' Sani. Sew Main Esmt from Sta. 18+50 to 34+60  
Abst. 157  
Temp. Working Space Granted as Shown  
See Instrument for any Special Conditions  
C.O. ~ 70-4391  
Vol. ~ 70206 - Pg. ~ 0687 Oct 22, 1970

P.I. No. 20  
EQUATION  
24+70.48 & Sew. Bck.  
= 24+39.83 & Sew. Fwd.  
Δ = 22°36'30" Rt.  
1-22% Bend

STA.	LT.	RT.	SIZE	VARIETY
22+34	10'	10'	10"	WILLOW
22+34	12'	10'	10"	ELM
22+34	14'	10'	10"	ELM
22+34	16'	10'	10"	ELM
22+34	18'	10'	10"	ELM
22+34	20'	10'	10"	ELM
22+34	22'	10'	10"	ELM
22+34	24'	10'	10"	ELM
22+34	26'	10'	10"	ELM
22+34	28'	10'	10"	ELM
22+34	30'	10'	10"	ELM
22+34	32'	10'	10"	ELM
22+34	34'	10'	10"	ELM
22+34	36'	10'	10"	ELM
22+34	38'	10'	10"	ELM
22+34	40'	10'	10"	ELM
22+34	42'	10'	10"	ELM
22+34	44'	10'	10"	ELM
22+34	46'	10'	10"	ELM
22+34	48'	10'	10"	ELM
22+34	50'	10'	10"	ELM
22+34	52'	10'	10"	ELM
22+34	54'	10'	10"	ELM
22+34	56'	10'	10"	ELM
22+34	58'	10'	10"	ELM
22+34	60'	10'	10"	ELM
22+34	62'	10'	10"	ELM
22+34	64'	10'	10"	ELM
22+34	66'	10'	10"	ELM
22+34	68'	10'	10"	ELM
22+34	70'	10'	10"	ELM
22+34	72'	10'	10"	ELM
22+34	74'	10'	10"	ELM
22+34	76'	10'	10"	ELM
22+34	78'	10'	10"	ELM
22+34	80'	10'	10"	ELM
22+34	82'	10'	10"	ELM
22+34	84'	10'	10"	ELM
22+34	86'	10'	10"	ELM
22+34	88'	10'	10"	ELM
22+34	90'	10'	10"	ELM
22+34	92'	10'	10"	ELM
22+34	94'	10'	10"	ELM
22+34	96'	10'	10"	ELM
22+34	98'	10'	10"	ELM
22+34	100'	10'	10"	ELM

BENCH MARK:  
North End of Conc. Headwall, East Side of  
Winnwood Lane, 175' South of Belt Line Road.  
Elev. 557.57

NOTE:  
From 18+0 to 34+3, construction of sanitary  
sewer is subject to the special terms and  
conditions of the Maude S. McEntire easement.  
Contractor should also be aware of the  
agreement between developer and Maude S. McEntire  
concerning the protection of trees and shrubbery.



PROJECT: \_\_\_\_\_  
DESIGN BY: *Shelton J. Orpen* DATE: *11-14-70*  
R.O.W. APPROVED: *S. J. J.* DATE: *12-2-70*  
ENGINEER OF DESIGN: *W. S. McEntire* DATE: *12-2-70*  
CONTRACT NO.: *70-192-R ~ Cullum ~ 10-14-70*

DEVELOPER  
G & C PROPERTIES, Inc.  
2012 MacARTHUR BLVD. IRVING, TEXAS 75060 Ph 256-4101  
ALBRITTON & ASSOCIATES, INC.  
CONSULTING ENGINEERS  
404 U.C.C. BLDG. 741-4884  
DALLAS, TEXAS 75207  
BY: *Shelton J. Orpen P.E.*

BELL BRANCH SANITARY SEWER  
FROM WHITE ROCK CREEK TO NOELL RD.  
DALLAS WATER UTILITIES DEPT.  
CITY OF DALLAS, TEXAS  
DESIGN: G.W.F. DRAWN: S.J.J. DATE: June, 1970 SCALE: 1"=40'H, 1"=6'V NOTES: FILE: NO.: 411-Q 1960