

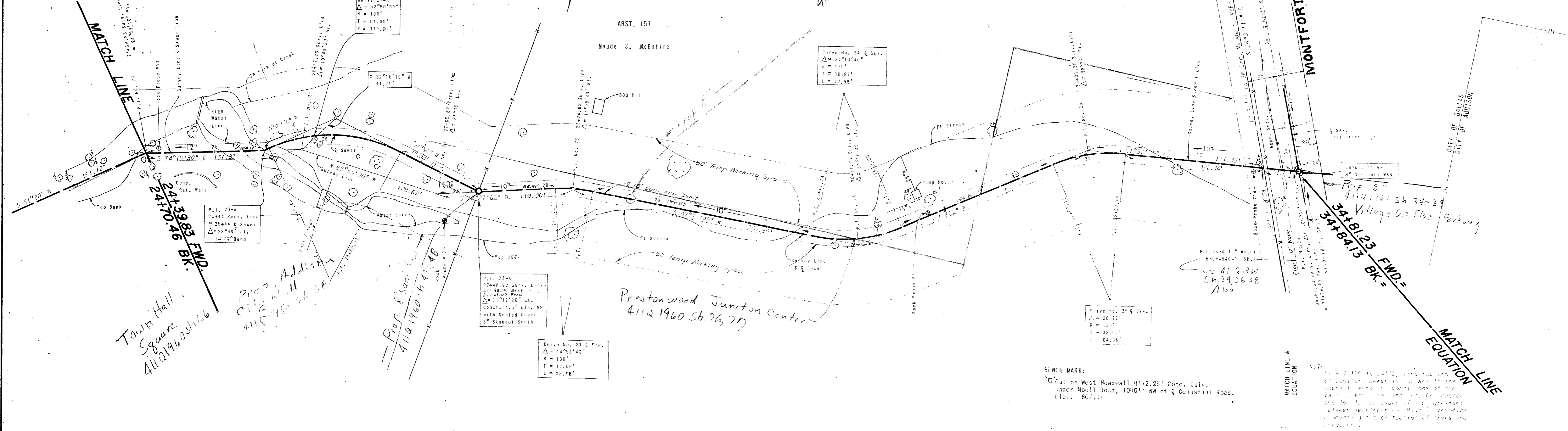
STA.	LT.	RT.	SIZE	VARIETY
24+40		12'	12"	PECAN
24+40		25'	12"	PECAN
24+45	10'		12"	ELM
24+45	20'		12"	BUSH
24+50		20'	12"	PECAN
24+50		20'	12"	PECAN
24+55		20'	12"	PECAN
24+55		20'	12"	OAK
24+55		20'	12"	PECAN
24+55		20'	12"	PECAN
24+55		20'	12"	WILLOW
24+55		20'	12"	PECAN
24+55		20'	12"	COTTONWOOD
24+74	7'		8"	BOIS D'ARC
24+80	27'		8"	PECAN
24+80	27'		8"	PECAN
24+80	27'		8"	WILLOW
24+80	27'		8"	WILLOW

STA.	LT.	RT.	SIZE	VARIETY
26+40	20'		8"	CEDAR
26+40	18'		8"	PECAN
26+40	50'		12"	BOIS D'ARC
26+40	15'		12"	PECAN
26+40	12'		12"	PECAN
26+40	12'		12"	HACKBERRY
26+40	12'		12"	BOIS D'ARC
26+40	12'		12"	HACKBERRY
26+40	12'		12"	ELM
26+40	12'		12"	BOIS D'ARC
26+40	12'		12"	PECAN
26+40	12'		12"	PECAN
26+40	12'		12"	PECAN
26+40	12'		12"	WILLOW
26+40	12'		12"	HACKBERRY
26+40	12'		12"	ELM
26+40	12'		12"	PECAN
26+40	12'		12"	WILLOW
26+40	12'		12"	WILLOW
26+40	12'		12"	WILLOW
26+40	12'		12"	WILLOW

Oaks North Add.
411Q-1960 Sh. 47, 48

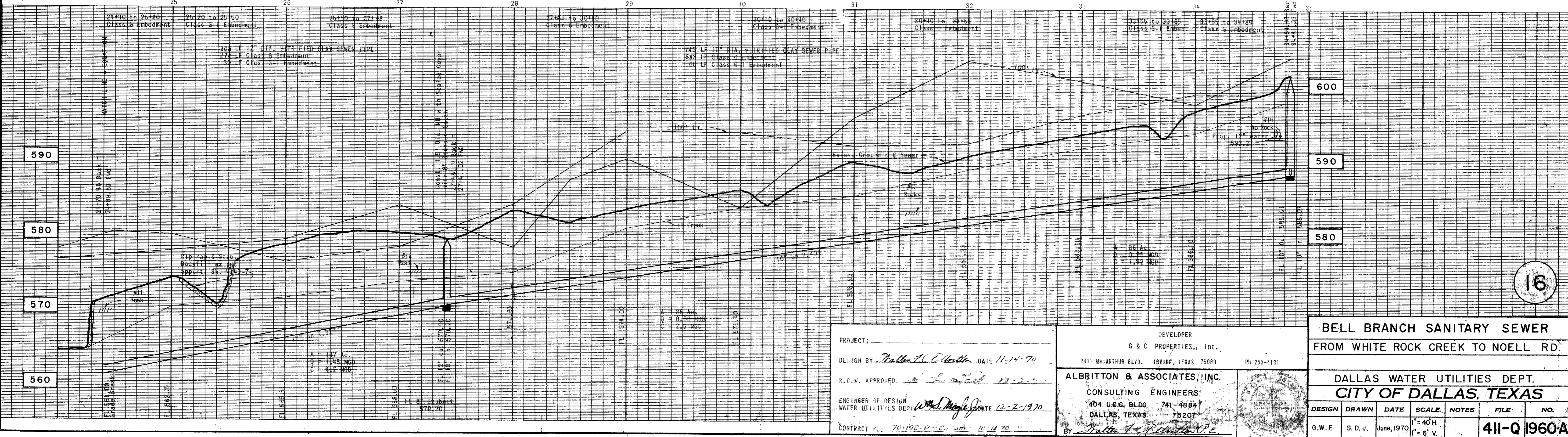
Prestonwood Pond II
411Q 1960 Sh. 92, 93

Maude S. McEntire, et al 13, 1970
15' E 20' & 50' S 1/4 Sec. 18, T18N, R10E, S18E, 181501 to 341601
Abst. 157
Temp. Working Space Granted as shown
See Instrument for Any & All Special Conditions
C.O. # 20-4391
Vol. ~ 70206 Pg. ~ 0687 Oct. 22, 1970



BENCH MARK:
Cut on West Headwall 4'x2.25' Conc. Culv.
under Noell Road, 1040' NW of E. Colistial Road.
Elev. 602.11

NOTICE: In the event of any construction of sanitary sewer in subject in the special terms and conditions of the contract, the contractor shall be held liable for the agreement between the contractor and Maude S. McEntire concerning the protection of trees and structures.



PROJECT: _____
DESIGN BY: Walter F. G. Smith DATE 11-14-70
S.C.W. APPROVED: _____
ENGINEER OF DESIGN: _____ DATE 12-2-1970
CONTRACT: 70-192 P.C. 4th 11-14-70

DEVELOPER
G & C PROPERTIES, Inc.
2317 McARTHUR BLVD. IRVING, TEXAS 75060 Ph: 255-4101
ALBRITTON & ASSOCIATES, INC.
CONSULTING ENGINEERS
404 U.C. BLDG. 741-4884
DALLAS, TEXAS 75207

BELL BRANCH SANITARY SEWER FROM WHITE ROCK CREEK TO NOELL RD.						
DALLAS WATER UTILITIES DEPT. CITY OF DALLAS, TEXAS						
DESIGN	DRAWN	DATE	SCALE	NOTES	FILE	NO.
G.W.F.	S.D.J.	June, 1970	1"=40'H. 1"=6' V.			411-Q 1960A