

WIRING DIAGRAM

NOTES:

THE ENCLOSURE CABINET SHALL BE CONSTRUCTED OF 5052 ALLOY ALUMINUM 0.125" THICK. THE CABINET SHALL BE OF CLEAN CUT DESIGN HAVING NO SHARP EDGES, CORNERS OR PROJECTIONS.

THE ENCLOSURE SHALL INCREASE IN SIZE WITH THE NUMBER OF CIRCUITS.

THE CUSTOMER DOOR SHALL BE HINGED THE FULL LENGTH OF THE DOOR AND HAVE SUITABLE MEANS OF HOLDING THE DOOR IN THE FULLY OPEN POSITION.

THE DEAD FRONT DOOR SHALL BE HINGED AND HAVE 3/4 TURN CLIPS OR OTHER SUITABLE MEANS OF LOCKING.

SERVICE ENTRANCE IN BACK OF ENCLOSURE SHALL HAVE A HINGED OR A LIFT OFF COVER WITH PAD LOCK PROVISIONS.

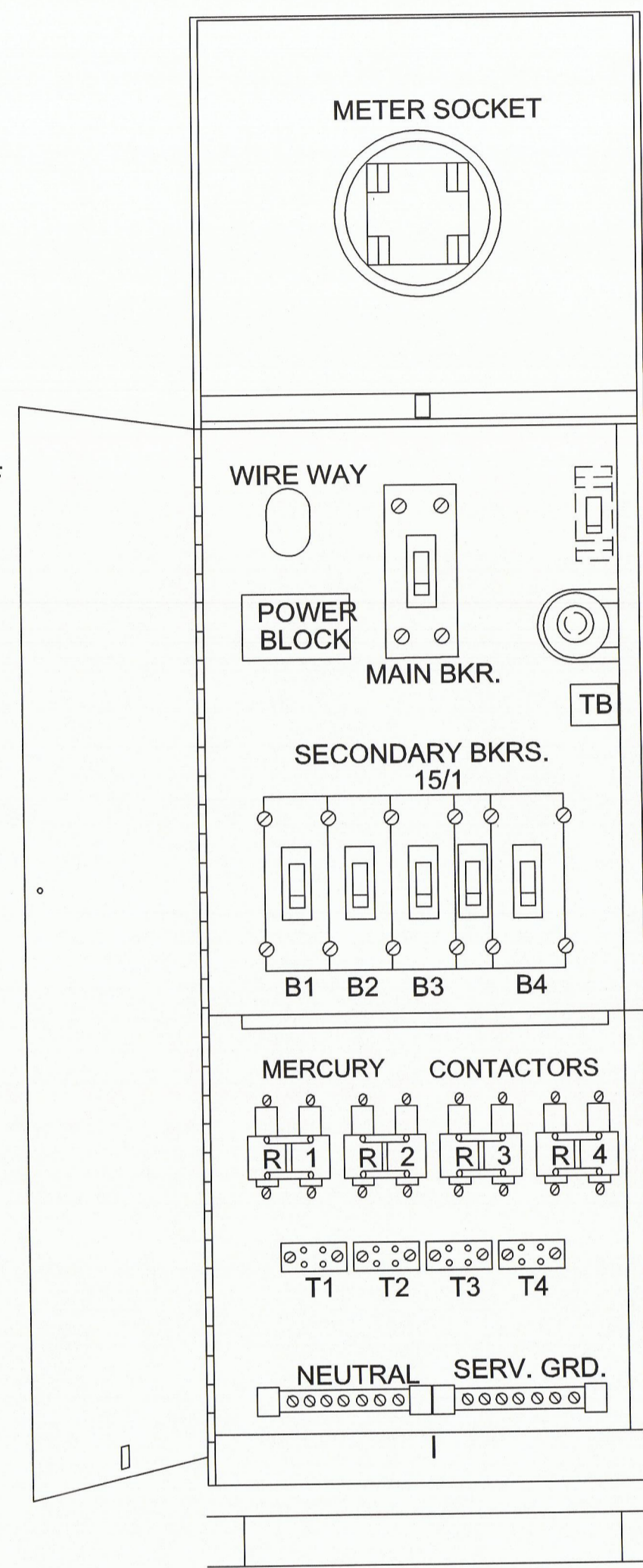
THE SECONDARY BREAKER FOR THE PHOTO-CELL CIRCUIT SHALL BE 120 VOLT, 15 AMP SINGLE POLE.

THE WIRING FROM PB1 AND PB2 TO T1 THROUGH T4 SHALL BE NO. 6 A.W.G. THW.

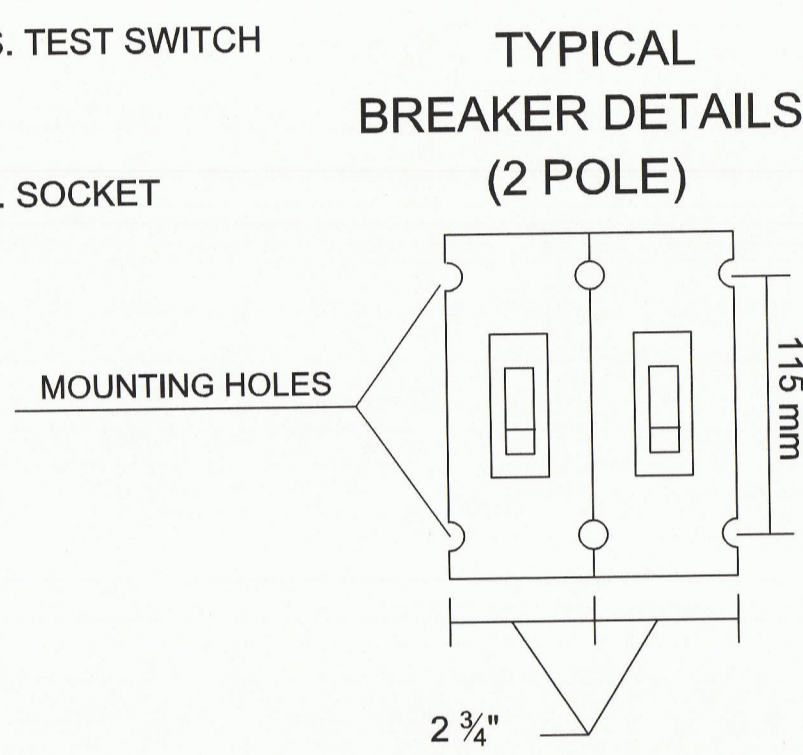
THE WIRING FOR THE LOAD AND LINE SIDE OF THE MAIN BREAKER SHALL BE THE SAME SIZE WITH THE WIRE.

THE WIRING FOR THE PHOTO ELECTRIC CONTROL CIRCUIT SHALL BE NO. 12 A.W.G. THW.

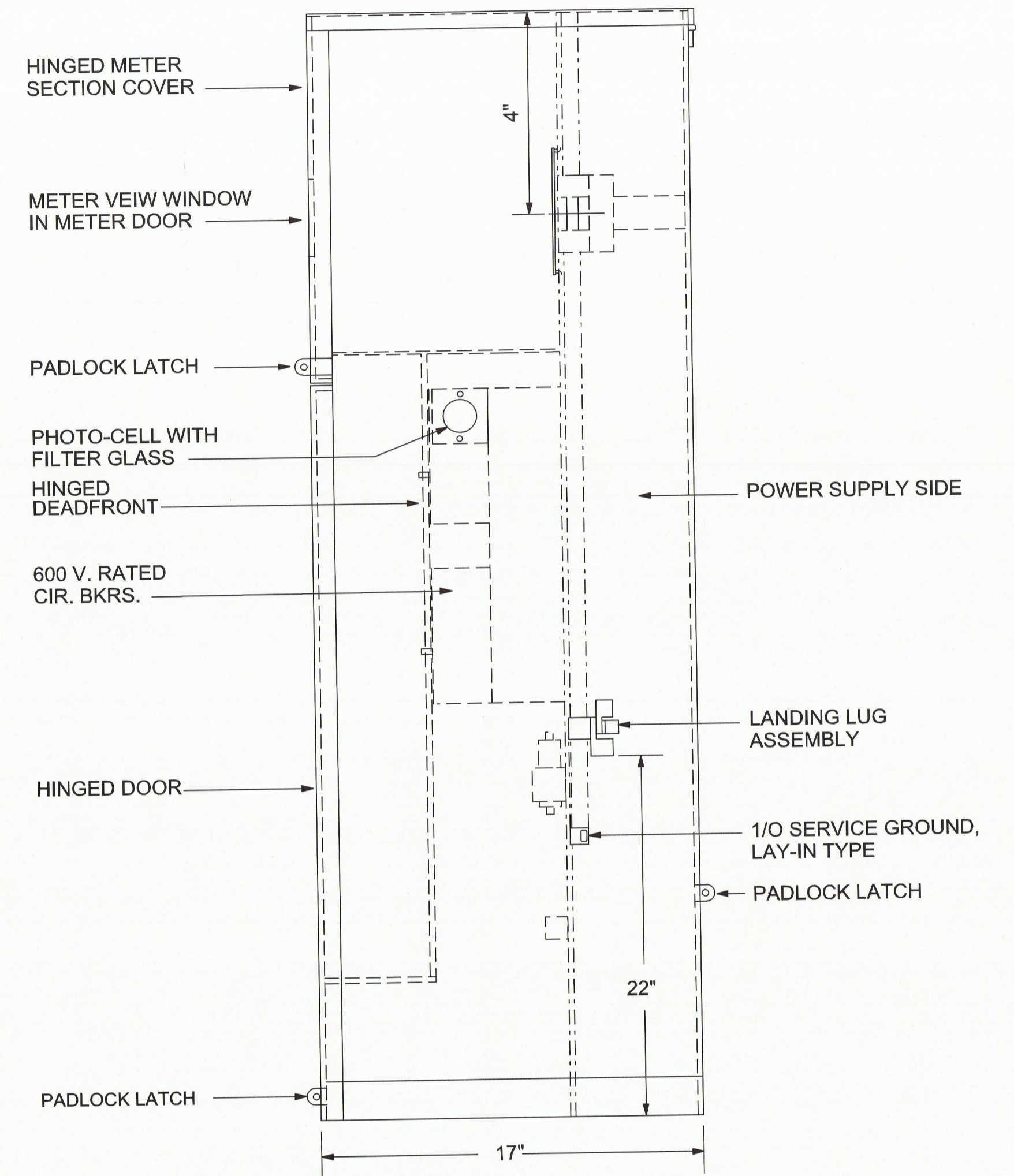
CONFIRM SERVICE LOCATIONS WITH ONCOR AT START OF PROJECT. PROVIDE LIGHTING CONTROLLER INCLUDING METER SOCKET, CONDUIT, AND CABLE FOR SECONDARY SUPPLY EXTENDED TO BASE OF EXISTING UTILITY POLE, AND IN ACCORDANCE WITH ONCOR REQUIREMENTS. COORDINATE APPLICATION FOR SERVICE WITH ONCOR AND TOWN. TOWN WILL PAY FOR ONCOR SERVICE CONNECTION CHARGES INCLUDING SETTING METER. TOWN WILL PROVIDE ADDRESS OF SERVICE TO CONTRACTOR. CONTRACTOR TO PROVIDE PERMANENT SIGN INDICATING ADDRESS ON ENCLOSURE BASED ON ONCOR REQUIREMENTS.



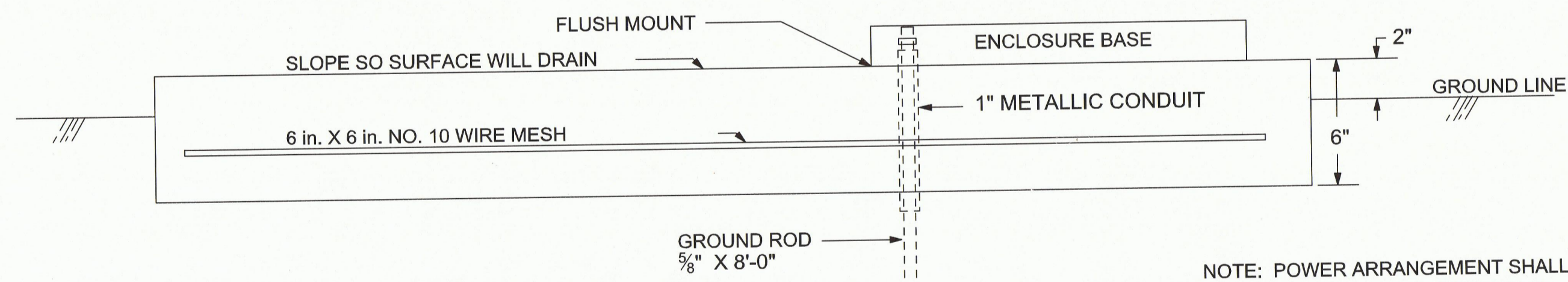
FRONT VIEW



TYPICAL BREAKER DETAILS (2 POLE)

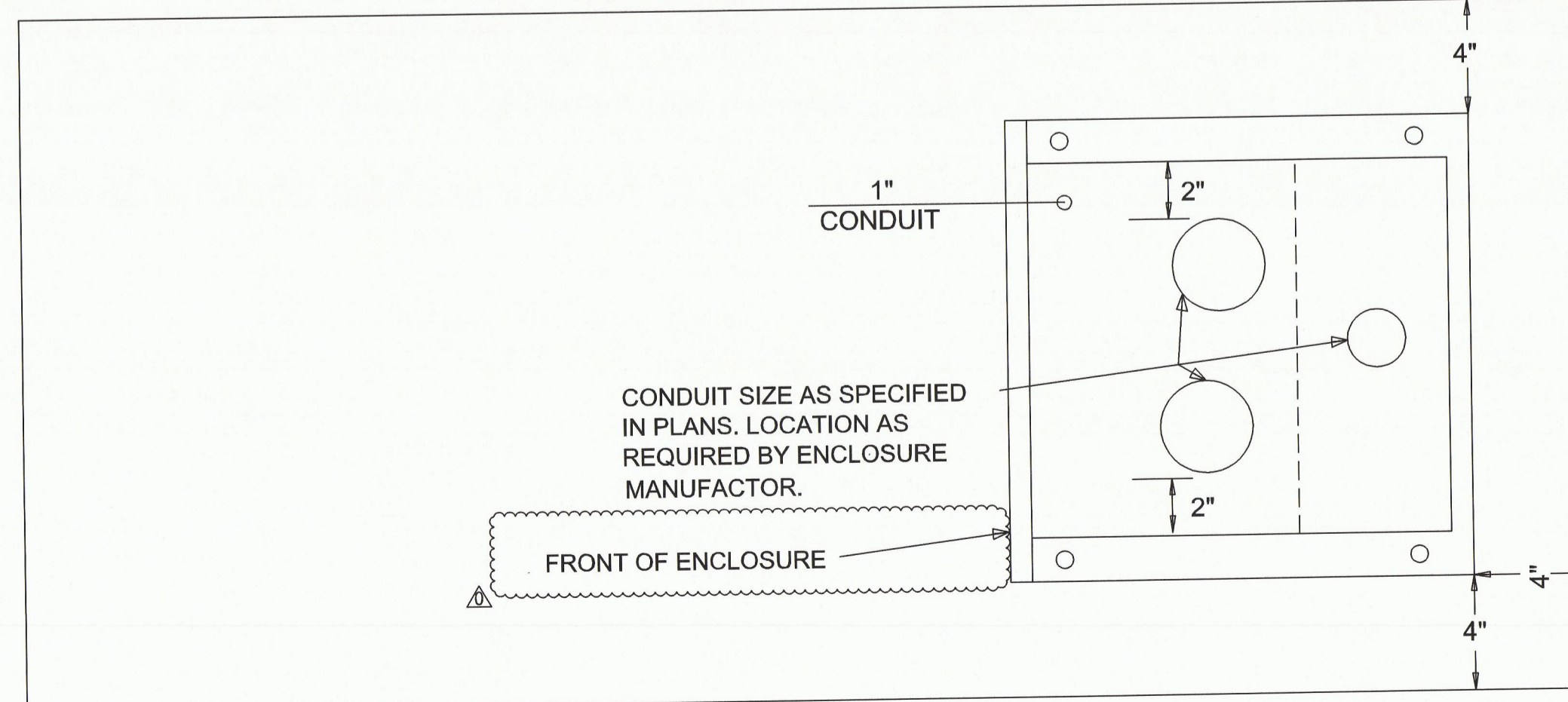


SIDE VIEW

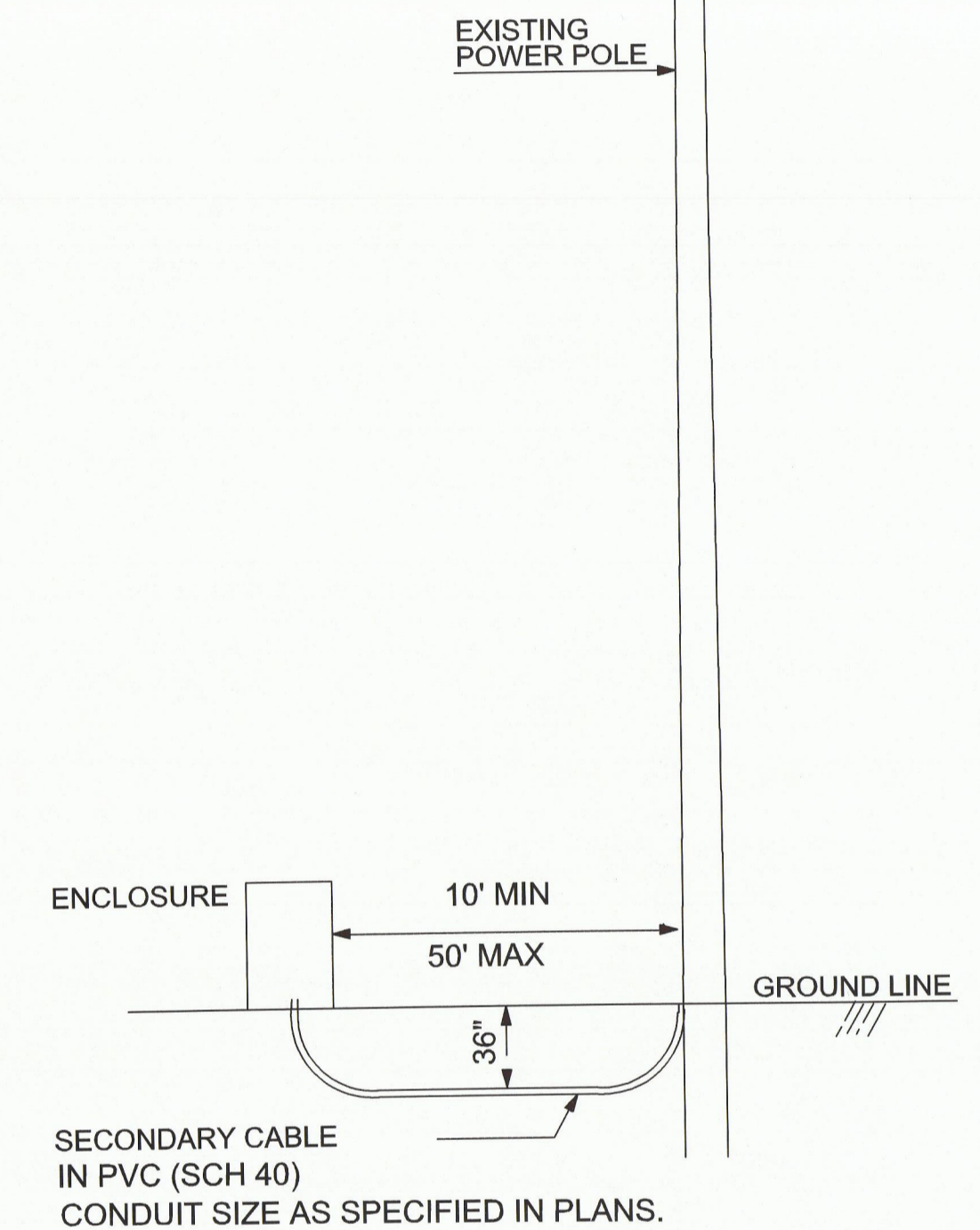


NOTE: GROUND ROD SHALL EXTEND 2 INCHES ABOVE THE CONCRETE PAD INSIDE OF ENCLOSURE BASE.

NOTE: POWER ARRANGEMENT SHALL MEET THE LOCAL UTILITY COMPANY SPECIFICATIONS.



TOP VIEW



POWER ARRANGEMENT

NOTE: THE DUCT FOR SECONDARY CABLE SHALL EXTEND 1" PAST THE END OF THE CONDUIT BEND.  
NOTE: ALL CONDUIT TO EXTEND 1" MIN. ABOVE CONCRETE SURFACE.

PAD DIMENSIONS SHALL BE ADJUSTED ACCORDINGLY FOR THE WIDTH OF THE ENCLOSURE TO BE INSTALLED.

DIMENSION OF CONCRETE PAD IN FRONT OF HINGED DOOR IS TO ALLOW ROOM FOR A PERSON TO STAND WITH DOOR IN OPEN POSITION AND AS REQUIRED BY CODE.



ISSUED FOR CONSTRUCTION - 6/1/11

NO.	DATE	REVISION	APPROV.
6/01/2011	ADDENDUM 1 REVISIONS	JGS	

**HNTB** ARCHITECTS ENGINEERS PLANNERS  
The HNTB Companies - TBPE Firm No. 420  
2201 BRYAN STREET, SUITE 100  
DALLAS, TEXAS 75201 (214) 748-8400

**BELT LINE ROAD MEDIAN**  
MARSH LANE TO DALLAS N. TOLLWAY

**ELECTRICAL DETAILS**  
**LIGHTING CONTROLLER**

TOWN OF ADDISON, TEXAS

SHEET 17 OF 19

DESIGN	DRAWN	FH	DATE	SCALE	HNTB NO.	SHEET NO.
CHECK	JS	CHECK	TK	30-Dec-10	48564	18