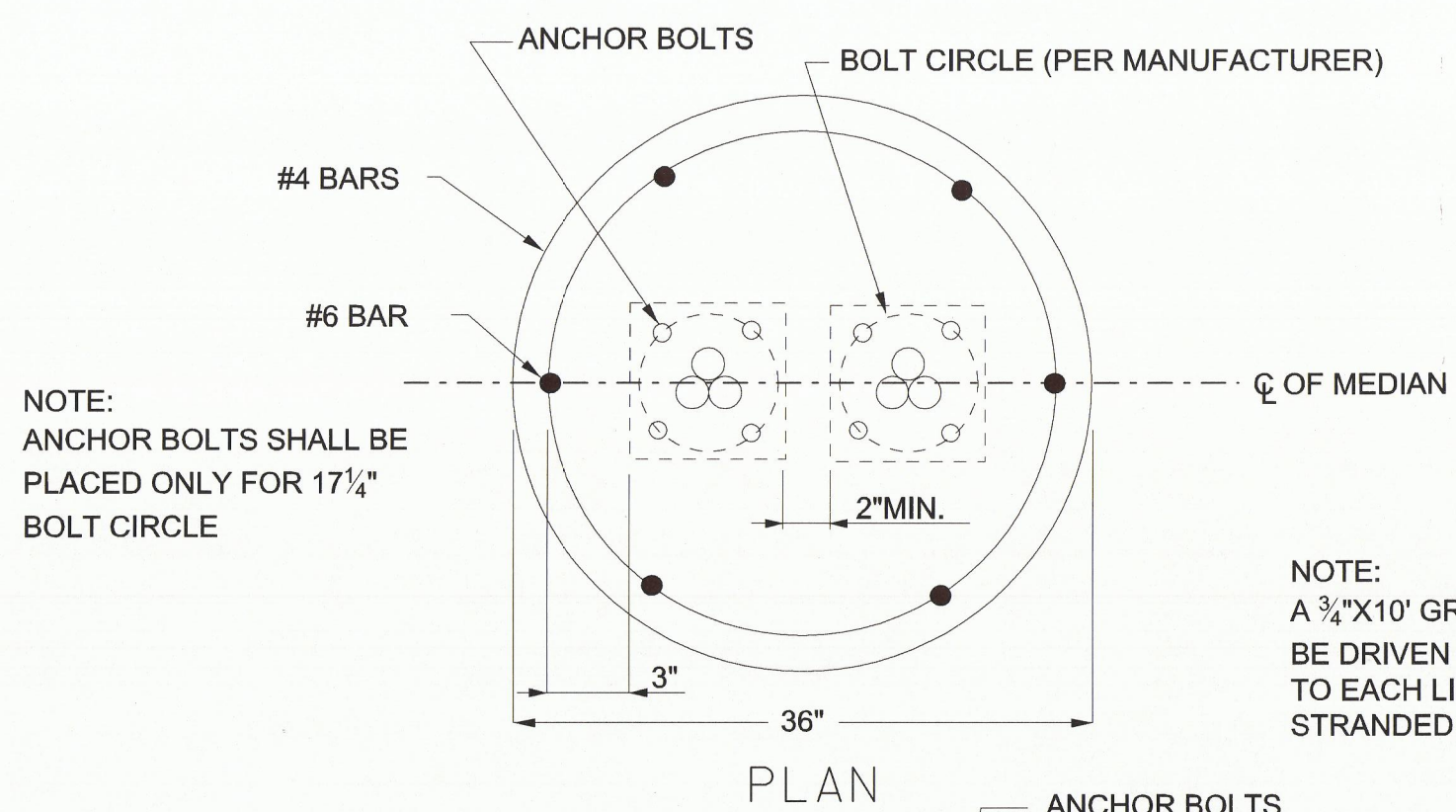
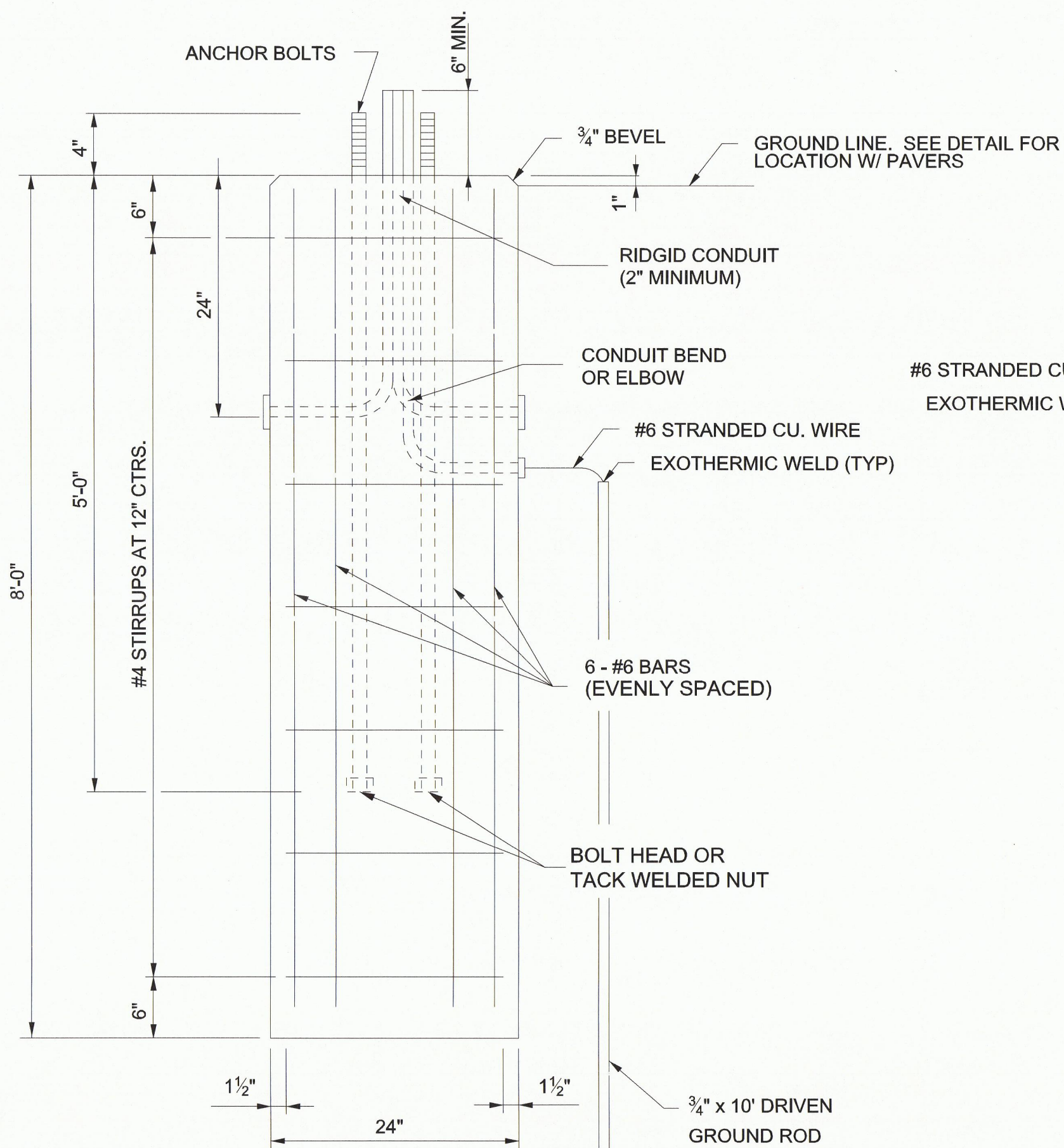


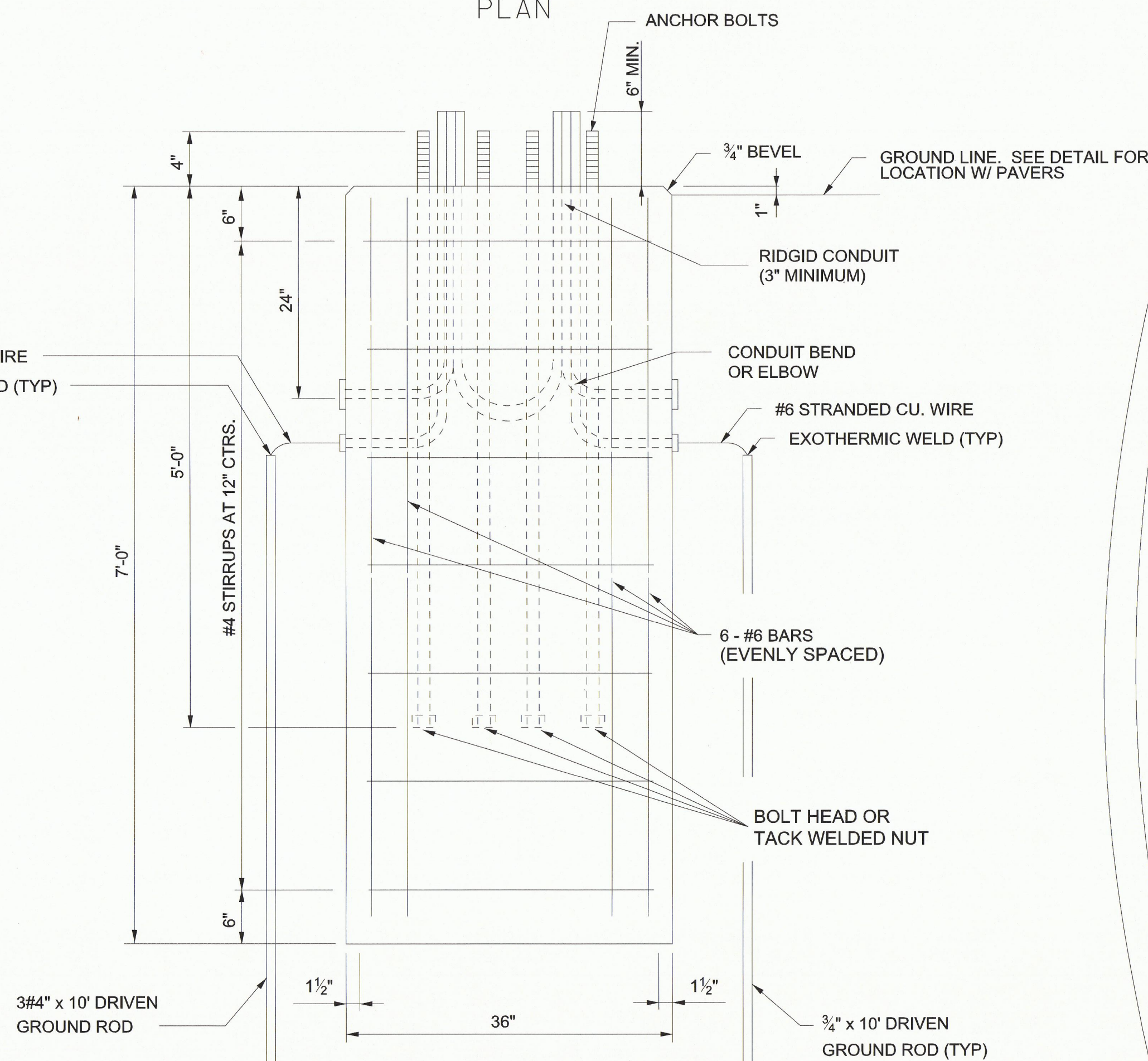
NOTE:  
A 3/4"x10' GROUND ROD SHALL BE DRIVEN AND EXOTHERMICALLY WELDED TO EACH LIGHT POLE USING STRANDED #6 COPPER WIRE.



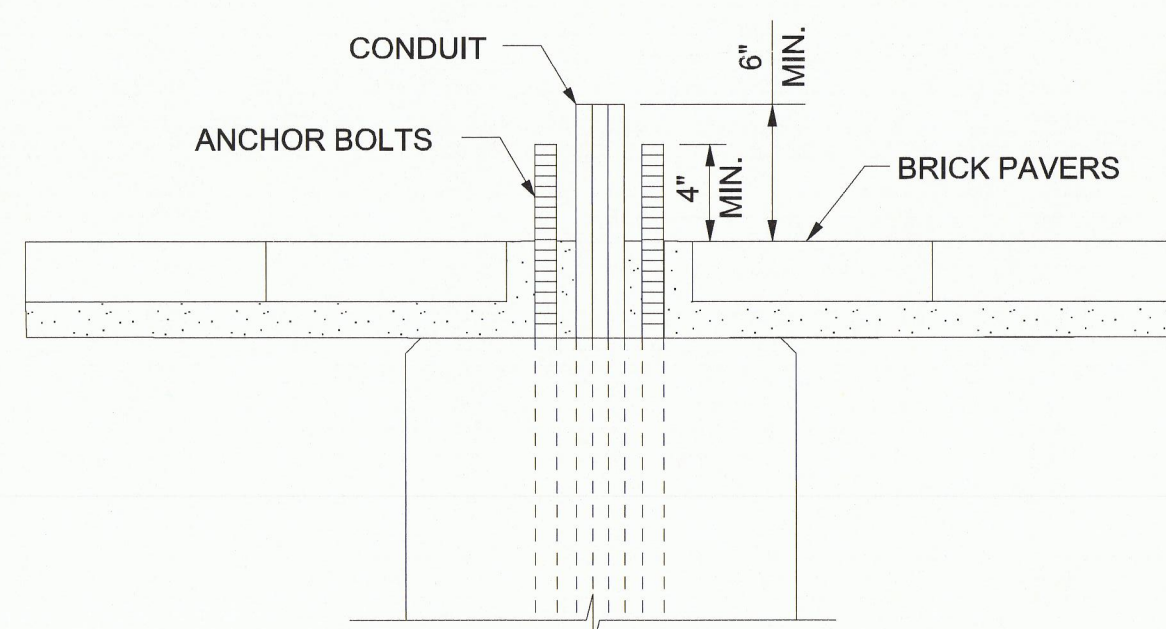
NOTE:  
A 3/4"x10' GROUND ROD SHALL BE DRIVEN AND CONNECTED TO EACH LIGHT POLE USING STRANDED #6 COPPER WIRE.



DETAILS OF CONCRETE FOUNDATION FOR TWIN LUMINAIRE POLE

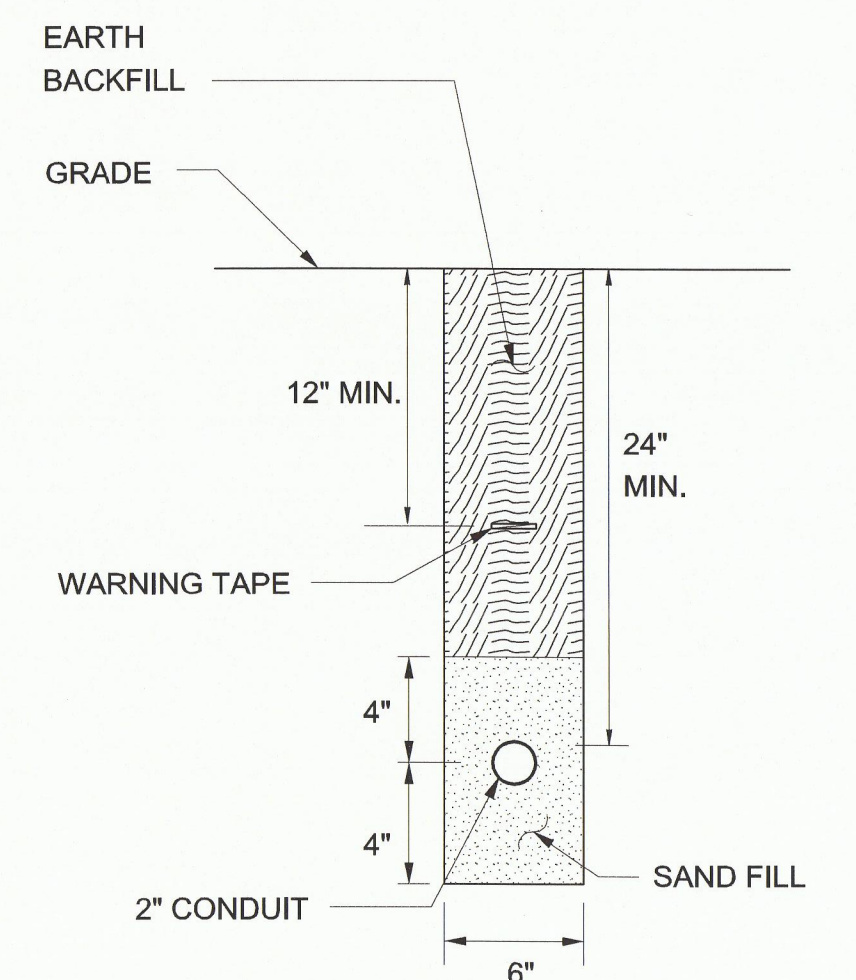


DETAILS OF CONCRETE FOUNDATION FOR TWO-SINGLE LUMINAIRE POLES



CONCRETE FOUNDATION DETAIL W/ BRICK PAVERS

BID ITEM DESCRIPTION	UNIT	QUANTITY
LIGHTING CONTROLLER	EACH	4
SINGLE LUMINAIRE POLE, (55' RADIUS)	EACH	16
TWIN LUMINAIRE POLE, (40' RADIUS)	EACH	60
LUMINAIRE MOUNTING ARM, 36"	EACH	136
LUMINAIRE WITH LAMP, 400W MH	EACH	136
POLE FOUNDATION J-BOLTS	EACH	304
CONCRETE POLE FOUNDATION, 24 IN. DIAMETER	LINEAR FEET	480
CONCRETE POLE FOUNDATION, 36 IN. DIAMETER	LINEAR FEET	56
2 IN. CONDUIT, TRENCHED	LINEAR FEET	12,700
2 IN. CONDUIT, BORED	LINEAR FEET	2,520
#4 AWG INSULATED WIRE, TYPE XHHW	LINEAR FEET	30,240
#4 AWG BARE WIRE	LINEAR FEET	7,975
POLE AND BRACKET WIRE, #10 AWG	LINEAR FEET	10,792
FUSED CONNECTORS (2 PER POLE)	EACH	76
IN-GROUND PULLBOX, PREFORMED	EACH	46
SOLID COPPER GROUND ROD, 5/8" X 10'	EACH	80
FRANGIBLE BASE, LOW-PROFILE TYPE	EACH	76



NO.	DATE	REVISION	APPROV.
6/01/2011		ADDENDUM 1 REVISIONS	JGS

**HNTB** ARCHITECTS ENGINEERS PLANNERS  
The HNTB Companies - TBPE Firm No. 420  
2001 BRYAN STREET, SUITE 100  
DALLAS, TEXAS 75201 (214) 748-8400

**BELT LINE ROAD MEDIAN**  
MARSH LANE TO DALLAS N. TOLLWAY

ELECTRICAL DETAILS  
POLES, FOUNDATIONS

TOWN OF ADDISON, TEXAS

DESIGN RS DRAWN FH DATE SCALE HNTB NO. SHEET NO.  
CHECK JS CHECK TK 30-Dec-10 48564 19