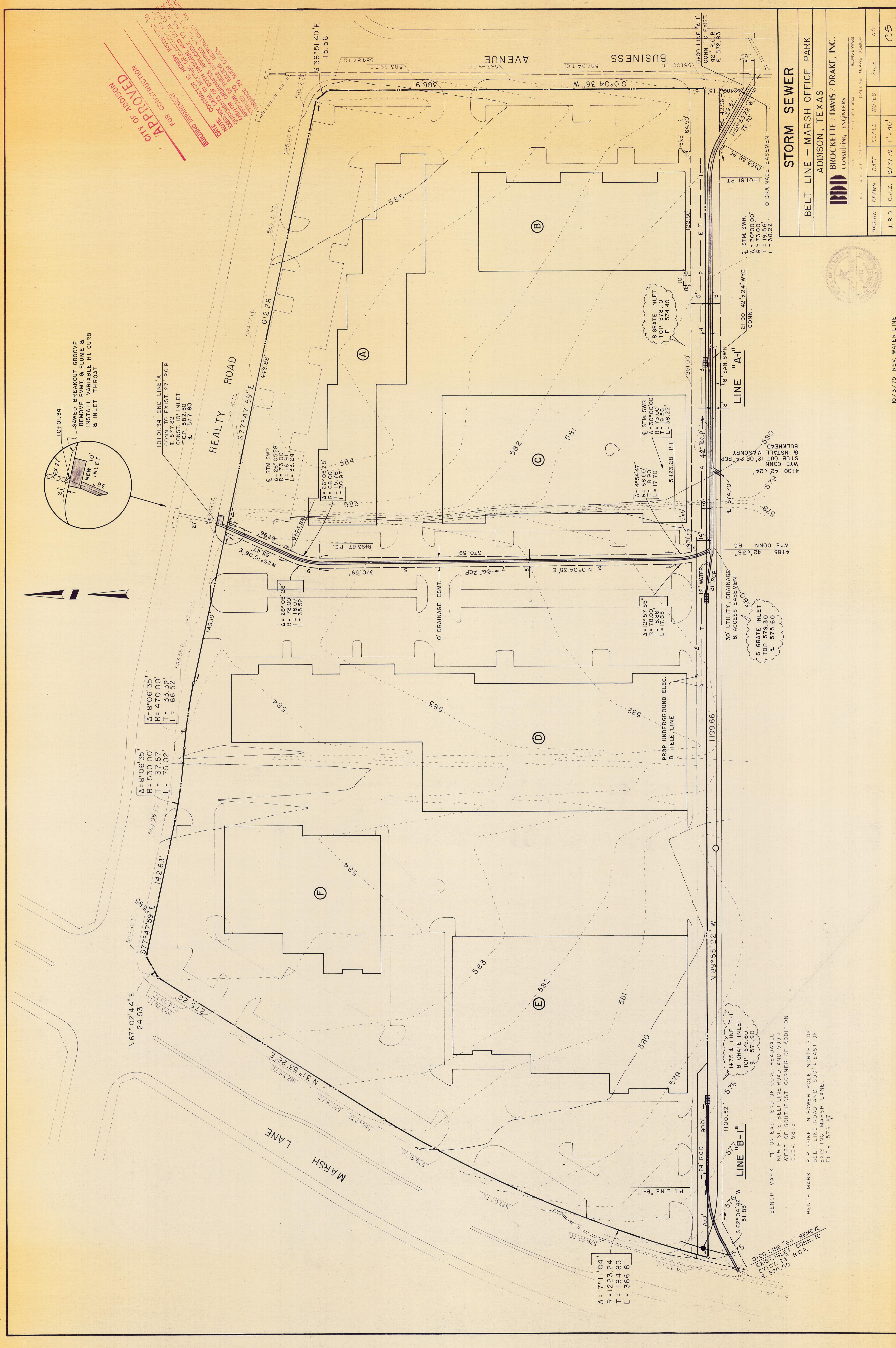
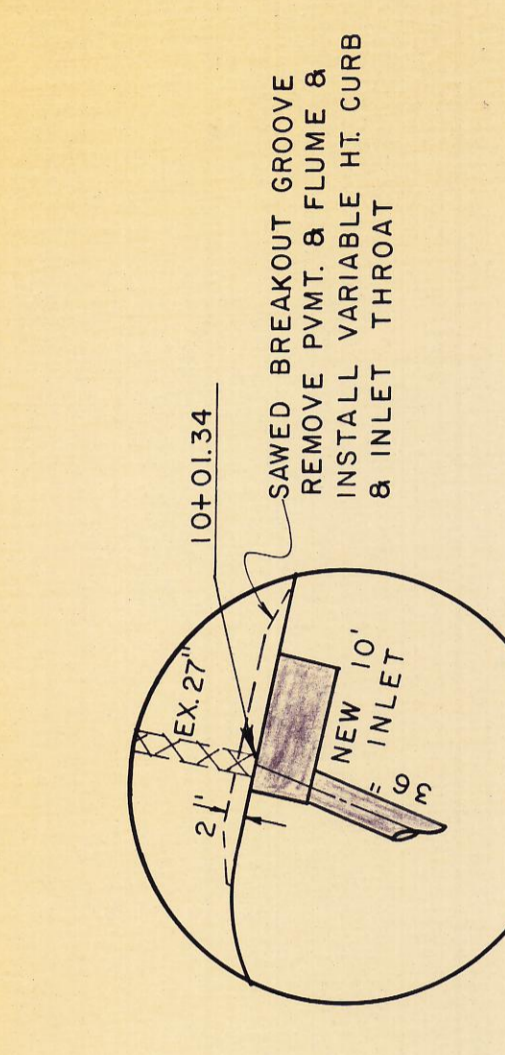


CITY OF ADDISON  
 APPROVED  
 FOR CONSTRUCTION  
 THE CITY ENGINEER HAS REVIEWED THIS PLAN AND FOUND IT TO BE IN ACCORDANCE WITH THE CITY ENGINEERING DEPARTMENT REQUIREMENTS FOR CONSTRUCTION.



$\Delta = 8^\circ 06' 35''$   
 $R = 470.00$   
 $T = 37.57$   
 $L = 75.02$

$\Delta = 8^\circ 06' 35''$   
 $R = 530.00$   
 $T = 37.57$   
 $L = 75.02$

$\Delta = 8^\circ 06' 35''$   
 $R = 470.00$   
 $T = 37.57$   
 $L = 75.02$

$\Delta = 8^\circ 06' 35''$   
 $R = 470.00$   
 $T = 37.57$   
 $L = 75.02$

$\Delta = 8^\circ 06' 35''$   
 $R = 470.00$   
 $T = 37.57$   
 $L = 75.02$

$\Delta = 8^\circ 06' 35''$   
 $R = 470.00$   
 $T = 37.57$   
 $L = 75.02$

$\Delta = 8^\circ 06' 35''$   
 $R = 470.00$   
 $T = 37.57$   
 $L = 75.02$

$\Delta = 8^\circ 06' 35''$   
 $R = 470.00$   
 $T = 37.57$   
 $L = 75.02$

$\Delta = 8^\circ 06' 35''$   
 $R = 470.00$   
 $T = 37.57$   
 $L = 75.02$

$\Delta = 17^\circ 11' 04''$   
 $R = 1223.24$   
 $T = 184.83$   
 $L = 366.81$

$\Delta = 12^\circ 57' 55''$   
 $R = 78.00$   
 $T = 8.86$   
 $L = 17.65$

$\Delta = 14^\circ 54' 47''$   
 $R = 68.00$   
 $T = 8.90$   
 $L = 17.70$

$\Delta = 26^\circ 05' 28''$   
 $R = 73.00$   
 $T = 15.76$   
 $L = 30.97$

$\Delta = 26^\circ 05' 28''$   
 $R = 73.00$   
 $T = 15.76$   
 $L = 30.97$

$\Delta = 26^\circ 05' 28''$   
 $R = 73.00$   
 $T = 15.76$   
 $L = 30.97$

$\Delta = 26^\circ 05' 28''$   
 $R = 73.00$   
 $T = 15.76$   
 $L = 30.97$

<b>STORM SEWER</b>			
BELT LINE - MARSH OFFICE PARK			
ADDISON, TEXAS			
<b>BDD</b> BROCKETTE / DAVIS / DRAKE, INC.			
CONSULTING ENGINEERS			
SURVEYING			
DESIGN	DRAWN	DATE	SCALE
J. R. D.	C. J. Z.	9/7/79	1" = 40'
FILE	NO.		
			C5



10/3/79 REV. WATER LINE