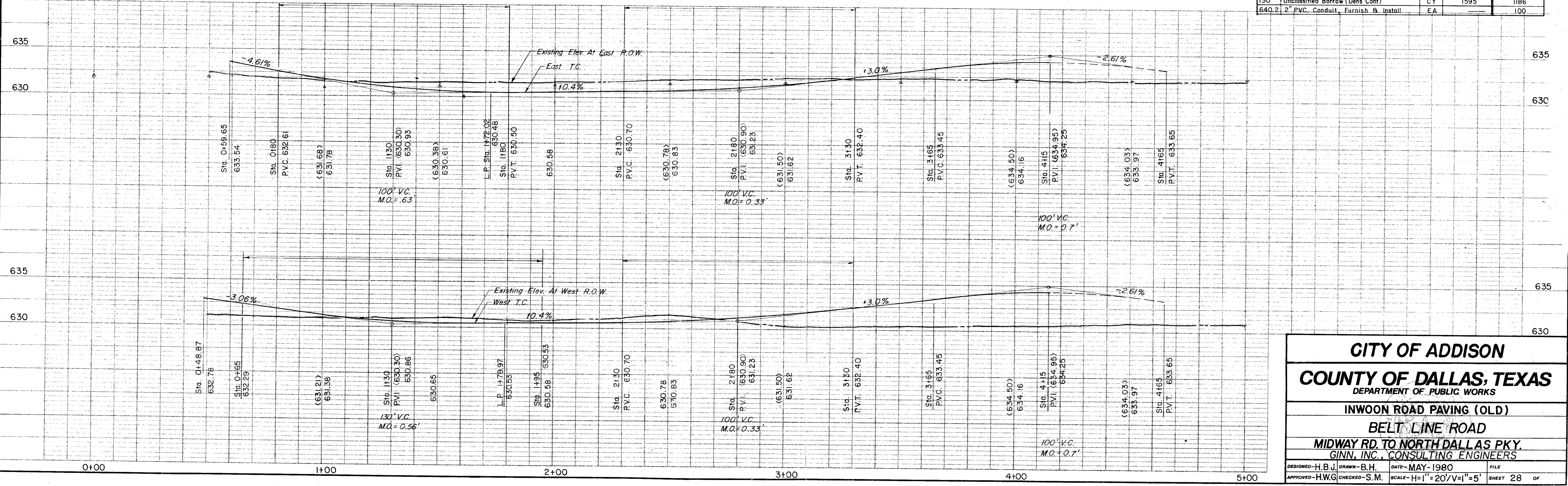


ESTIMATED QUANTITIES			
ITEM	DESCRIPTION	UNIT	QUANTITY
100	Prepare Roadway R.O.W	Sta.	5
104.1	Remove Old Concrete, Pavement & Median	SY	---
104.2	Sawed Break-Out Groove	LF	55
110	Unclassified Road Excavation (Dens Cont.)	CY	254
160	Placing 4" Topsoil	CY	---
248	6" Flex Base (Dens Cont) (Ty A, Gr 2, C13)	CY	56
260.1	Lime (Ty A) Slurry Method	Ton	42.76
260.2	6" Lime Treated Subgrade (Dens Cont)	SY	3421.09
340.1	3" Hot Mix Asphalt (Ty D) Resurf Shoulder	Ton	18.93
340.2	6" Hot Mix Asphalt (Ty B)	Ton	---
360.1	8" Conc Pavement (3000 PSI)	SY	3307.52
360.2	6" Conc Monolithic Curb (3000 PSI)	LF	982
360.3	4" Non-Reinf Conc in Median (2000 PSI)	SY	---
360.4	Conc St Header	LF	45
360.5	Conc RR Header	LF	215
524	Conc Driveways, Appr 5" Reinf Conc (3000 PSI)	SY	38.09
640.4	Pull Box, Complete In Place	EA	3
752.1	Traffic Buttons - Single Refl Ty P15 White	EA	73
752.3	Traffic Buttons - Double Refl Ty P17 Yellow	EA	100
754.1	Traffic Buttons - Nonrefl, Ty P7 White	EA	130
130	Unclassified Borrow (Dens Cont)	CY	1595
640.2	2" PVC Conduit, Furnish & Install	EA	100

B.M. #16 on N.W. corner of conc. drive at 15025 block of Inwood Road. ELEV. = 630.31



CITY OF ADDISON
COUNTY OF DALLAS, TEXAS
 DEPARTMENT OF PUBLIC WORKS

INWOOD ROAD PAVING (OLD)
BELT LINE ROAD
 MIDWAY RD. TO NORTH DALLAS PKY.
 GINN, INC., CONSULTING ENGINEERS

DESIGNED - H.B.J. DRAWN - B.H. DATE - MAY - 1980 FILE
 APPROVED - H.W.G. CHECKED - S.M. SCALE - H=1"=20'/V=1"=5' SHEET 28 OF