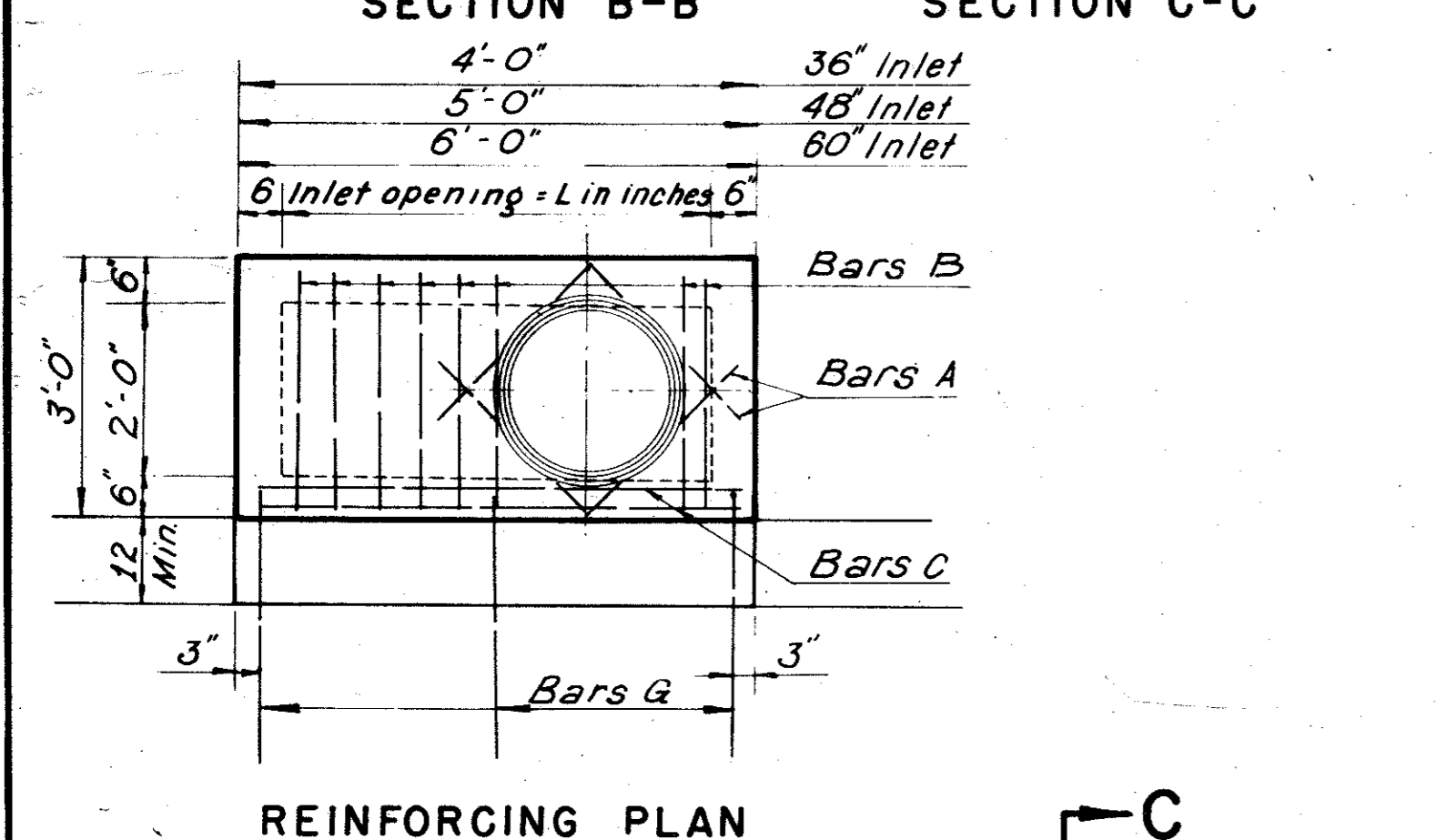
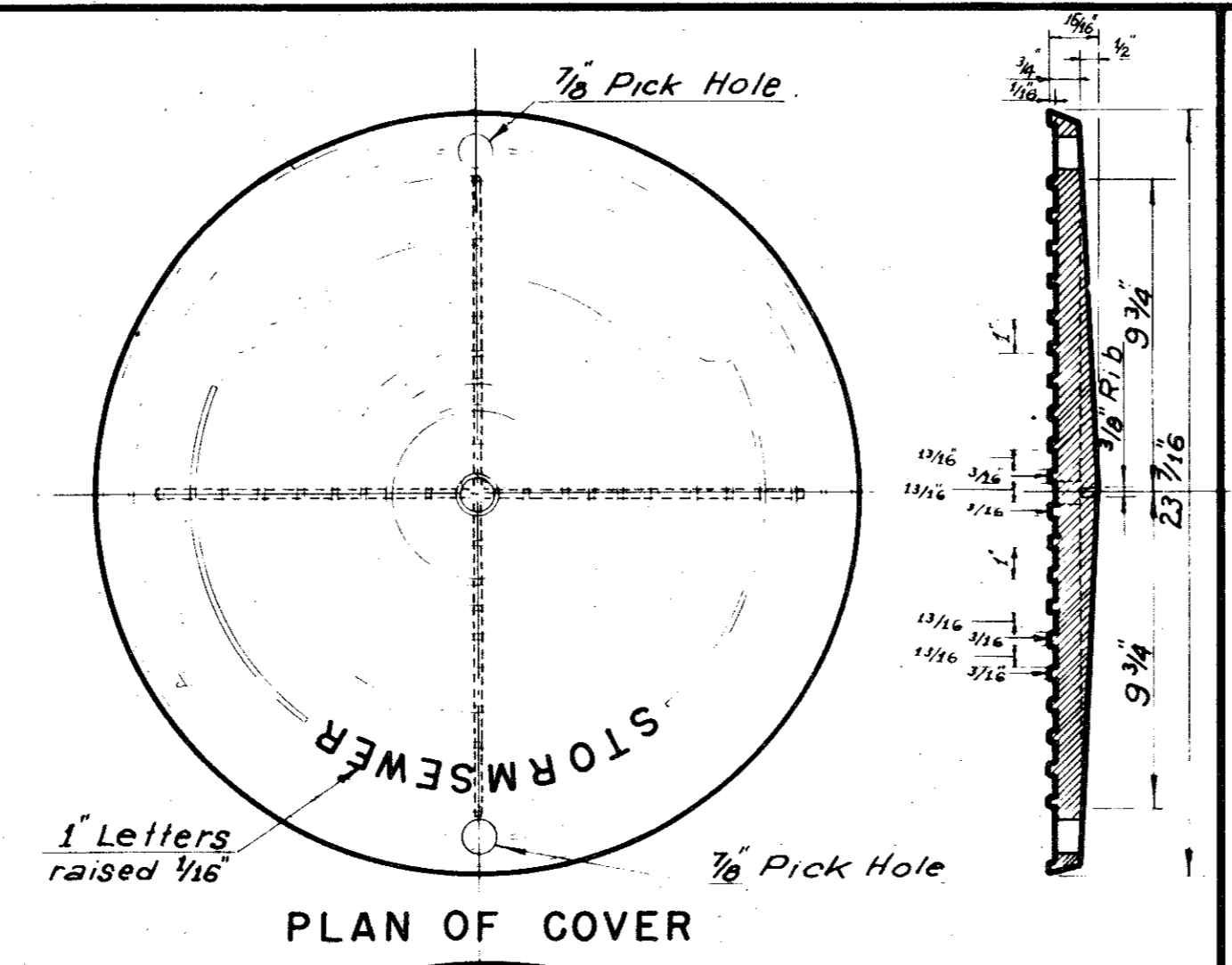


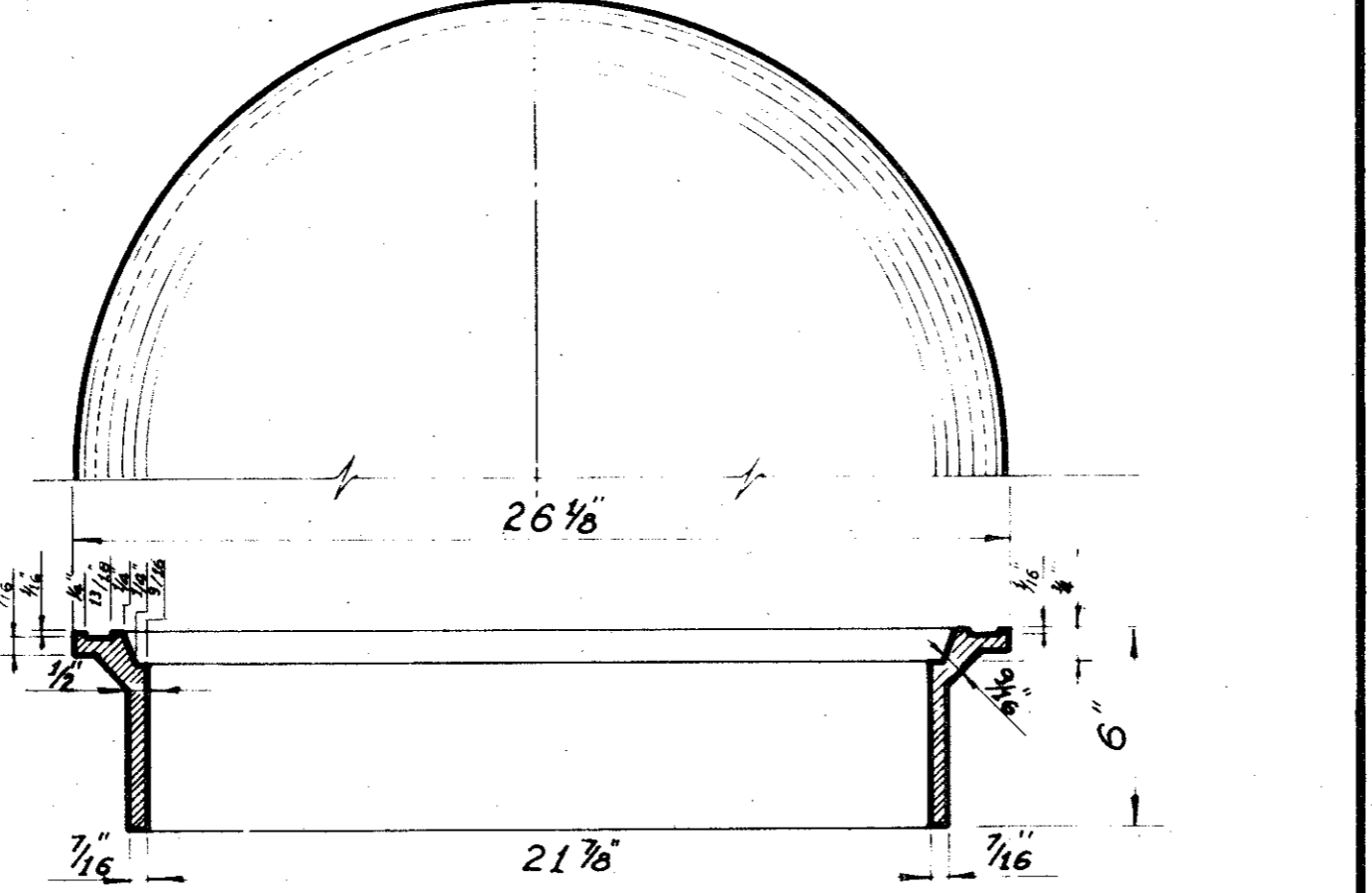
SECTION B-B SECTION C-C



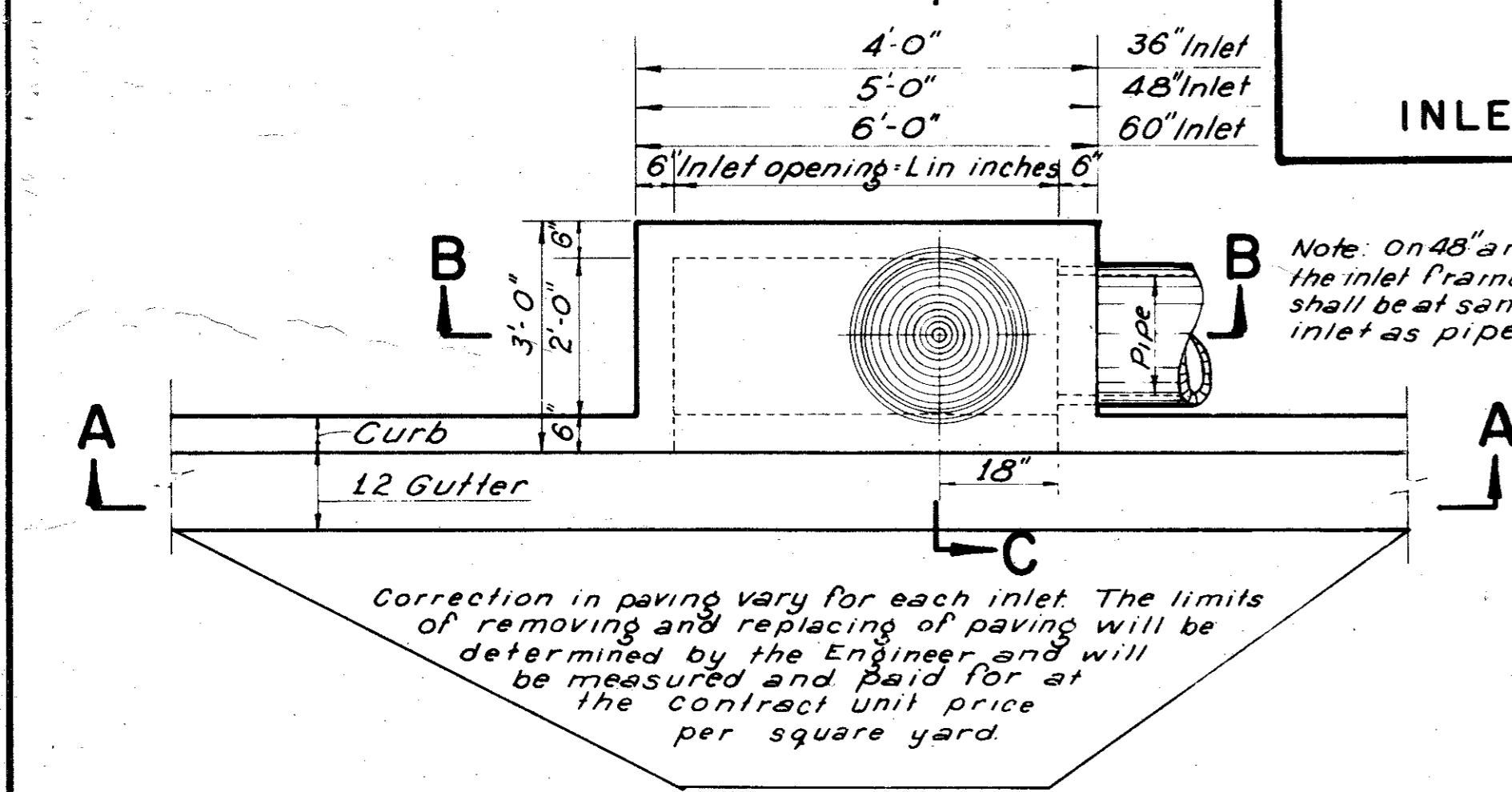
REINFORCING PLAN



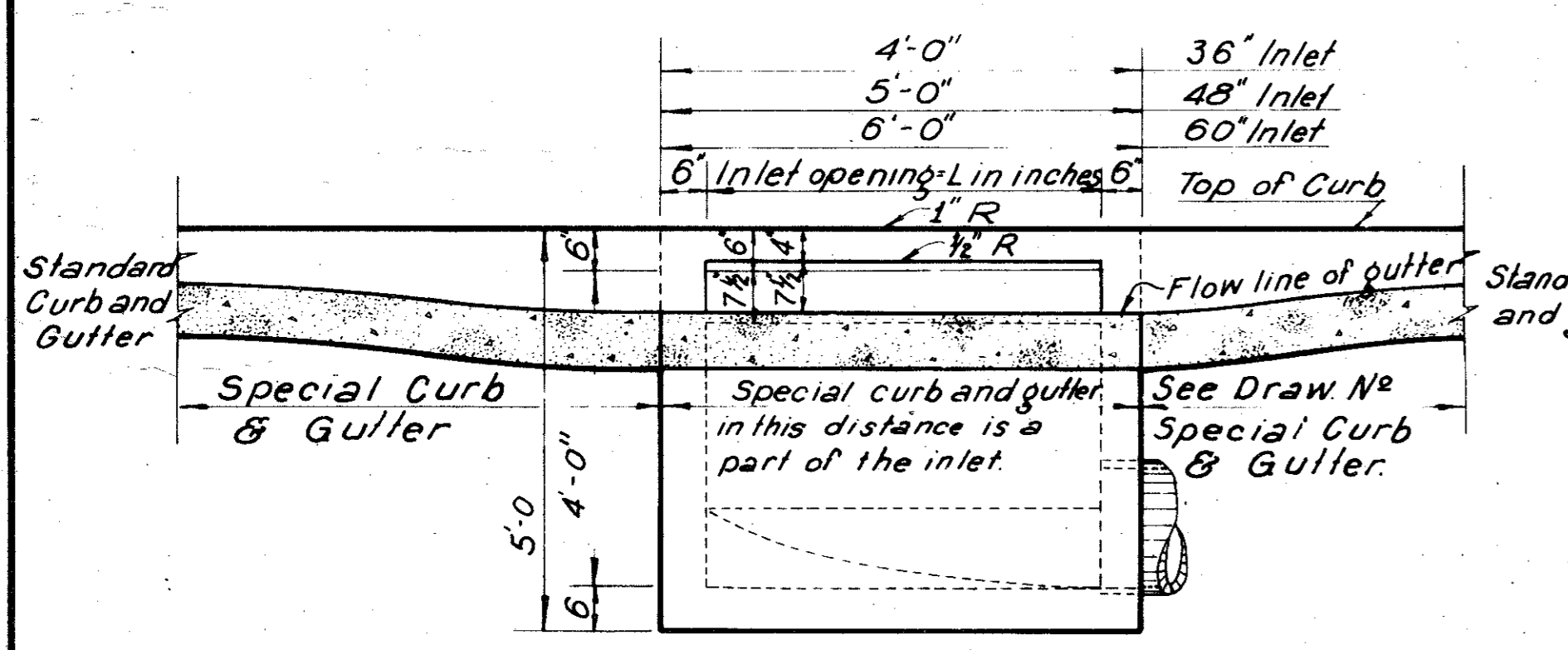
PLAN OF COVER



SECTION OF FRAME INLET FRAME AND COVER



PLAN



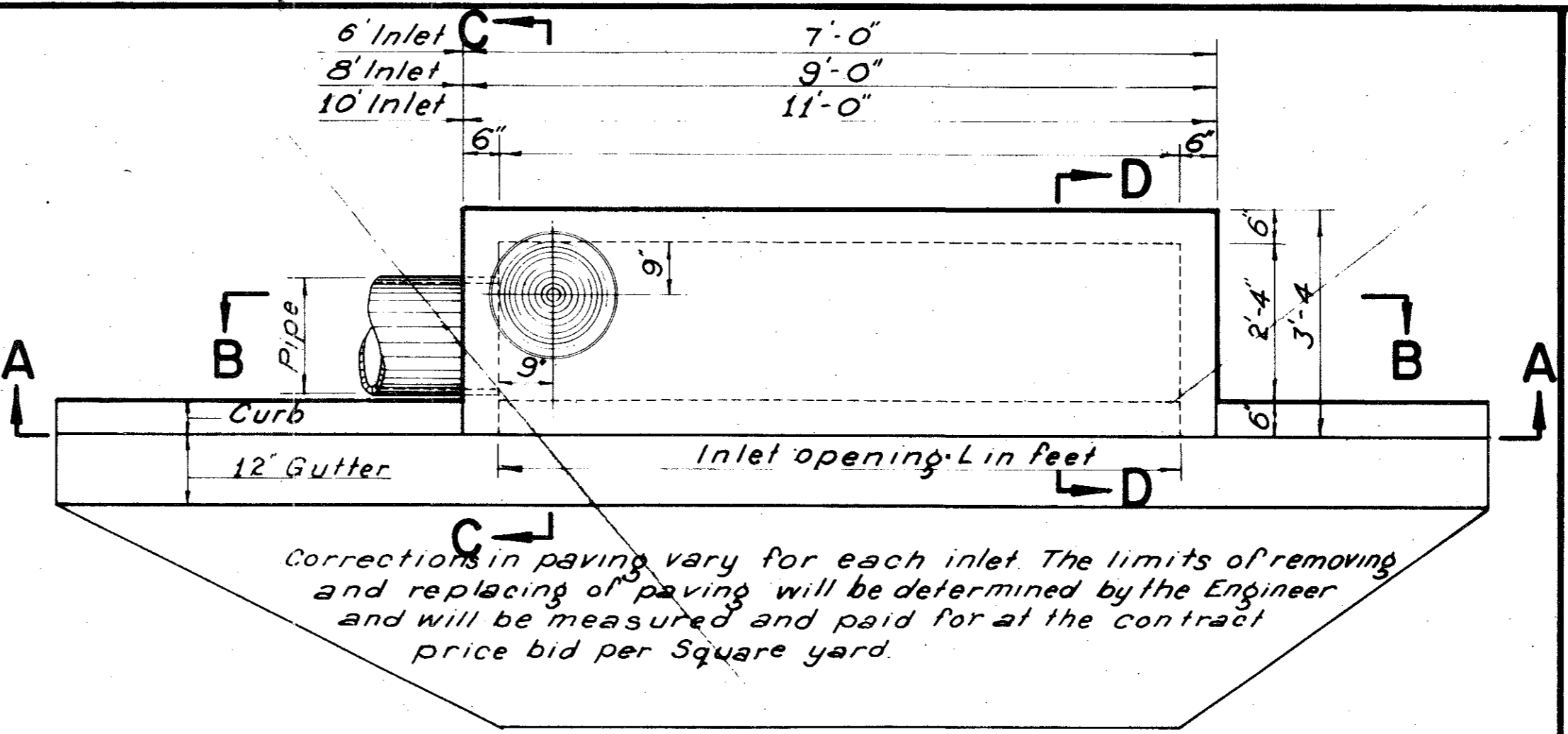
SECTION A-A

36, 48 AND 60 INCH INLETS

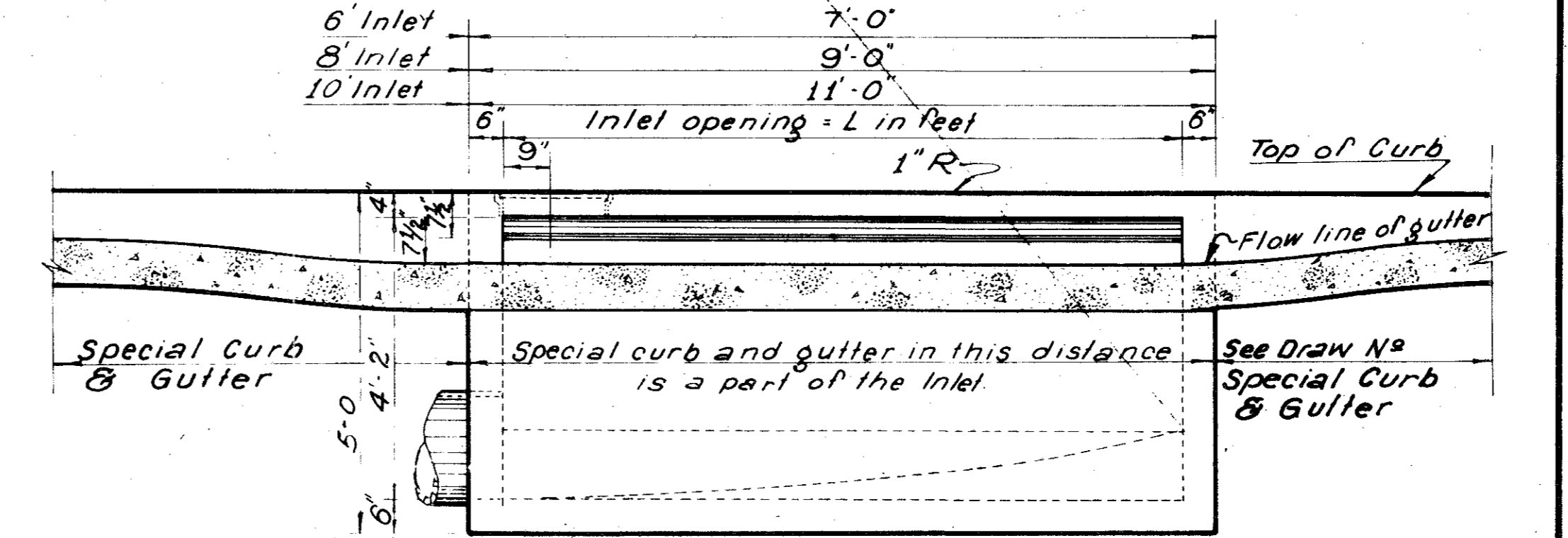
2'-6"	36" Inlet - #5-4 required
2'-6"	48" Inlet - #5-4 required
2'-6"	60" Inlet - #5-4 required
BARS A	
2'-9"	36" Inlet - #5-4 required
2'-9"	48" Inlet - #5-6 required
2'-9"	60" Inlet - #5-8 required
BARS B	
3'-9"	36" Inlet - #5-2 required
4'-8"	48" Inlet - #5-2 required
5'-9"	60" Inlet - #5-2 required
BARS C	
3'-0"	36, 48 & 60" Inlets #3-3 required
BARS G	

NOTES:

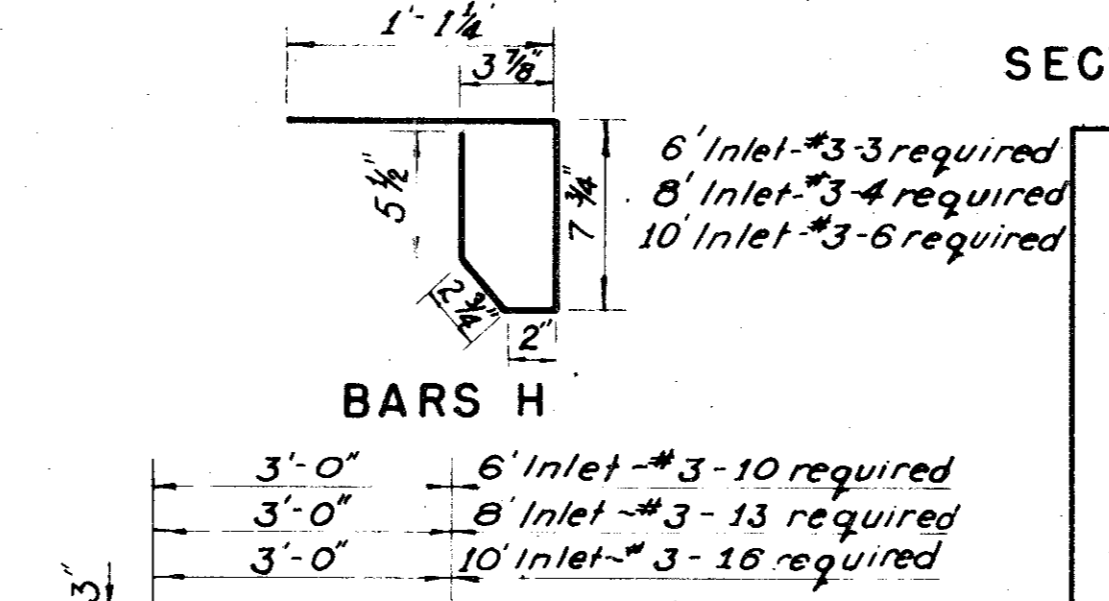
Concrete shall have a minimum compressive of 3000 psi. at 28 days.
Lateral pipe may enter inlet at any location.
The 12" gutter in front of inlet is a part of the inlet and shall be built with the inlet.
Top of inlet slope shall conform to adjacent parkway normal 1/4" ft. Slope.



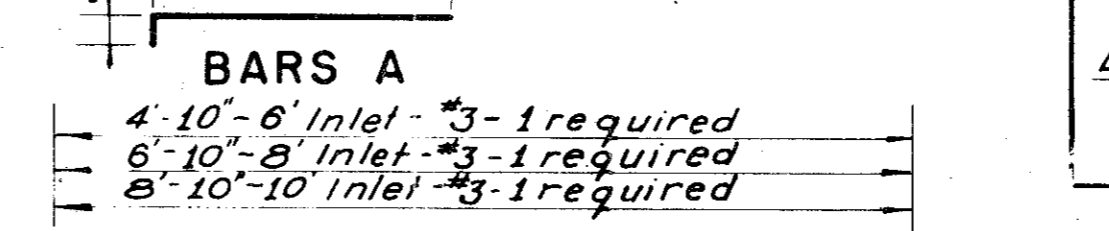
PLAN



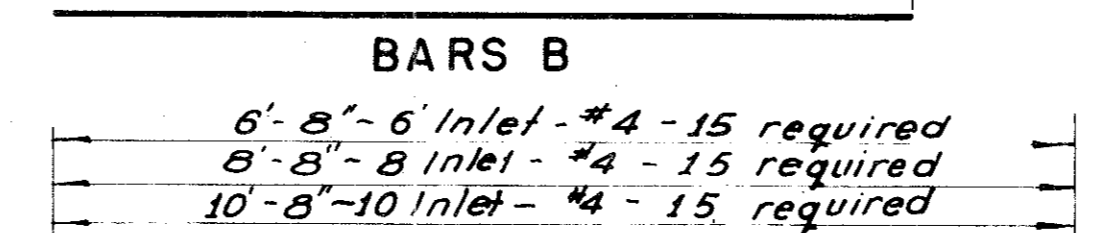
SECTION A-A



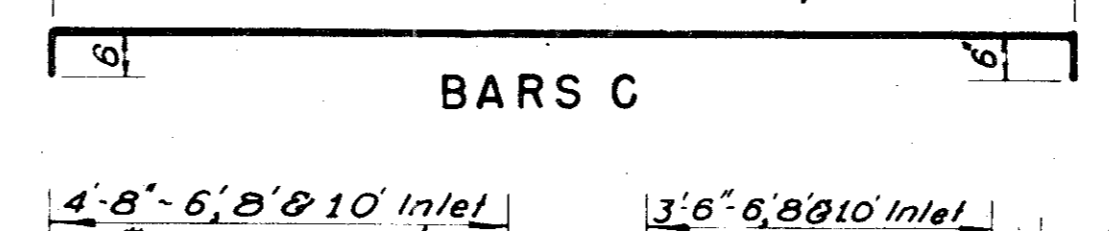
BARS H



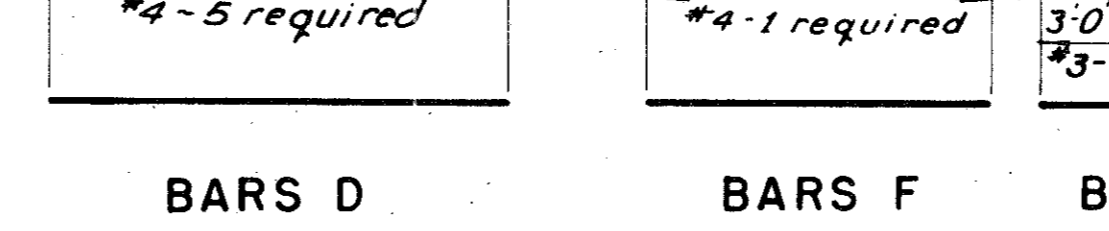
BARS A



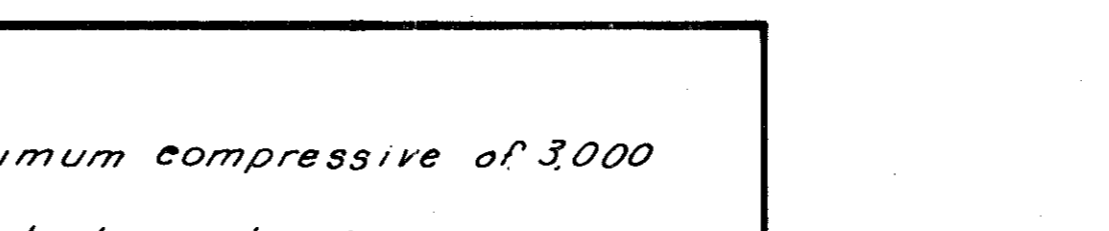
BARS B



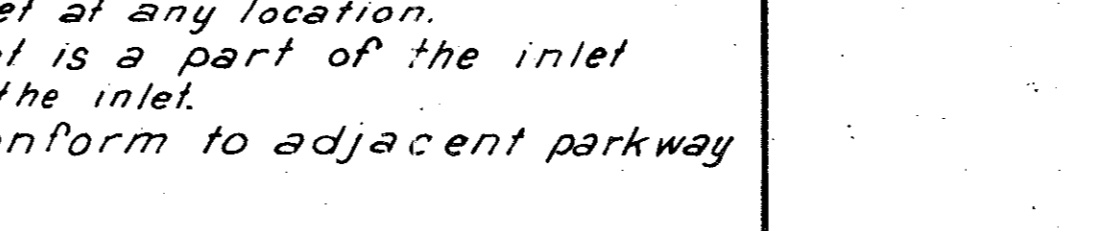
BARS C



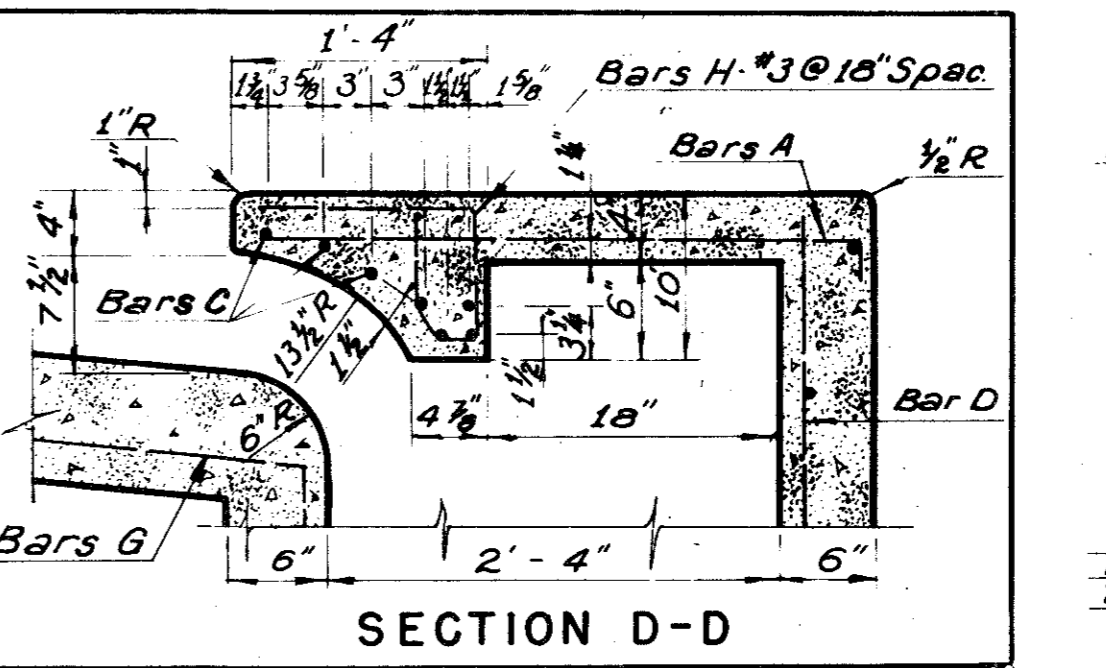
BARS D



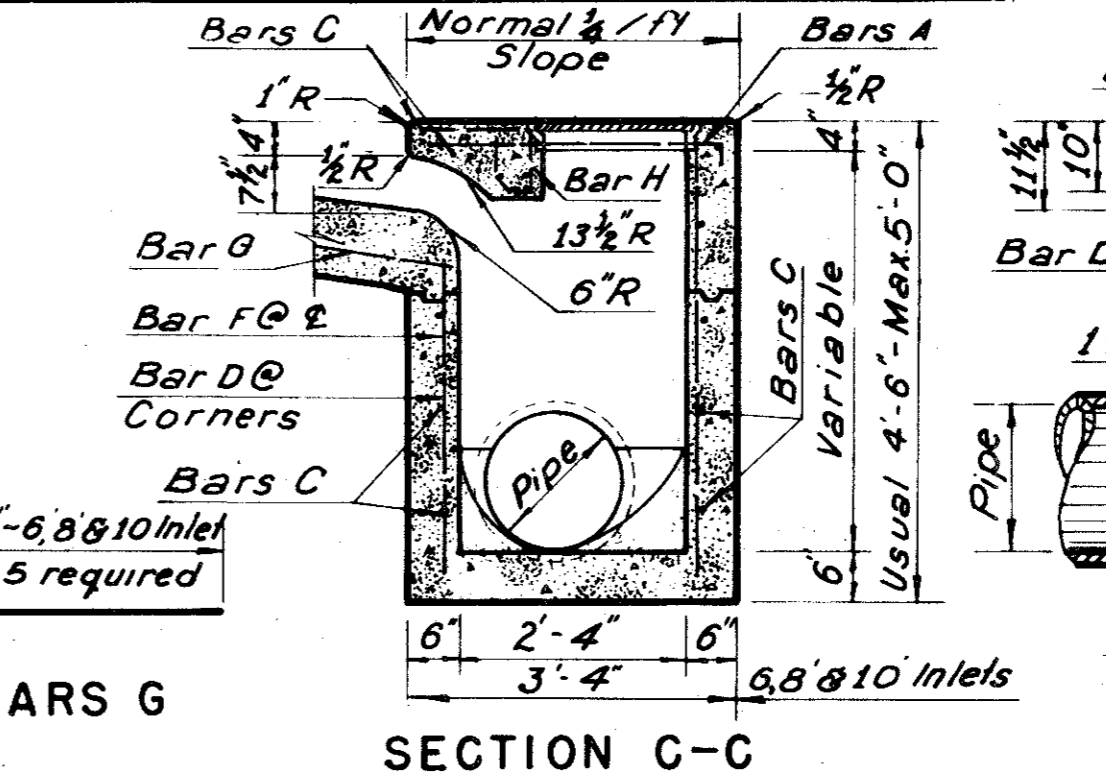
BARS F



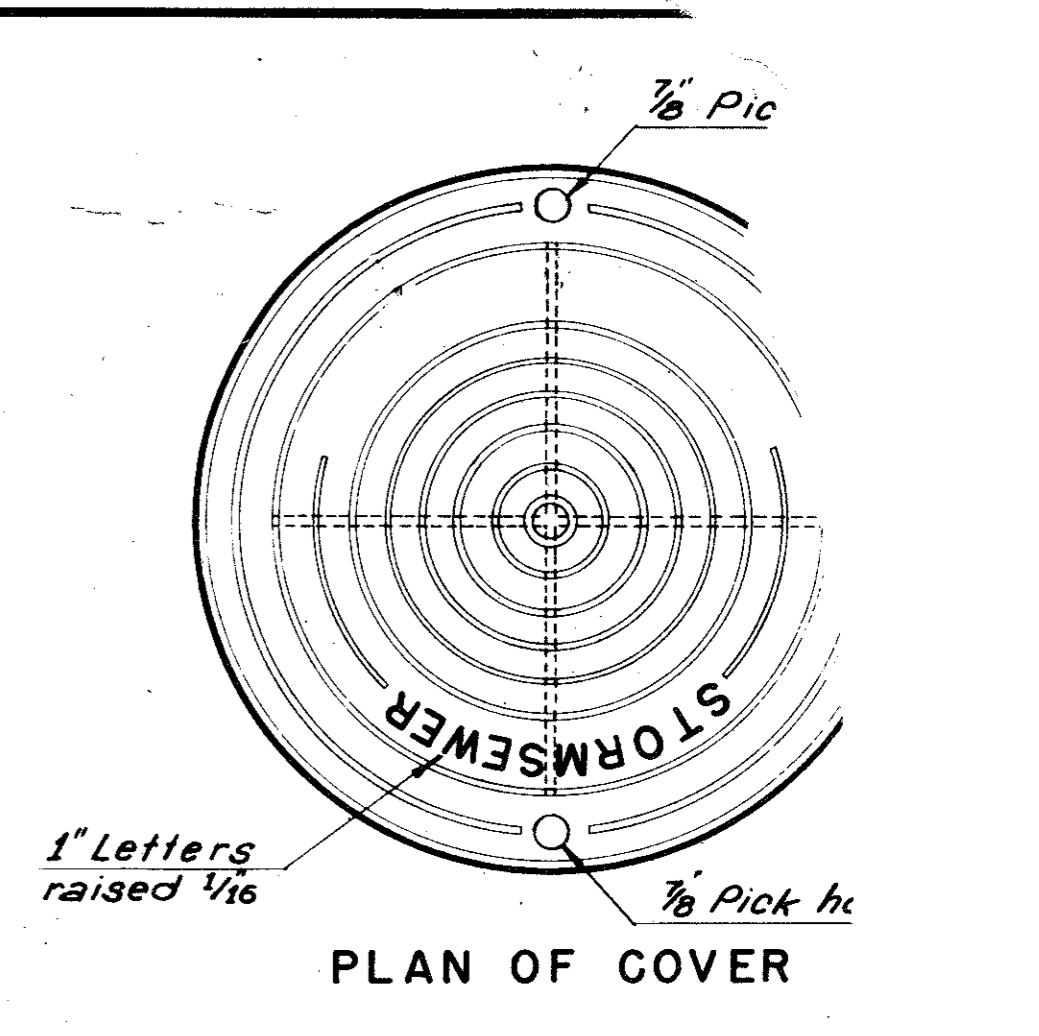
BARS G



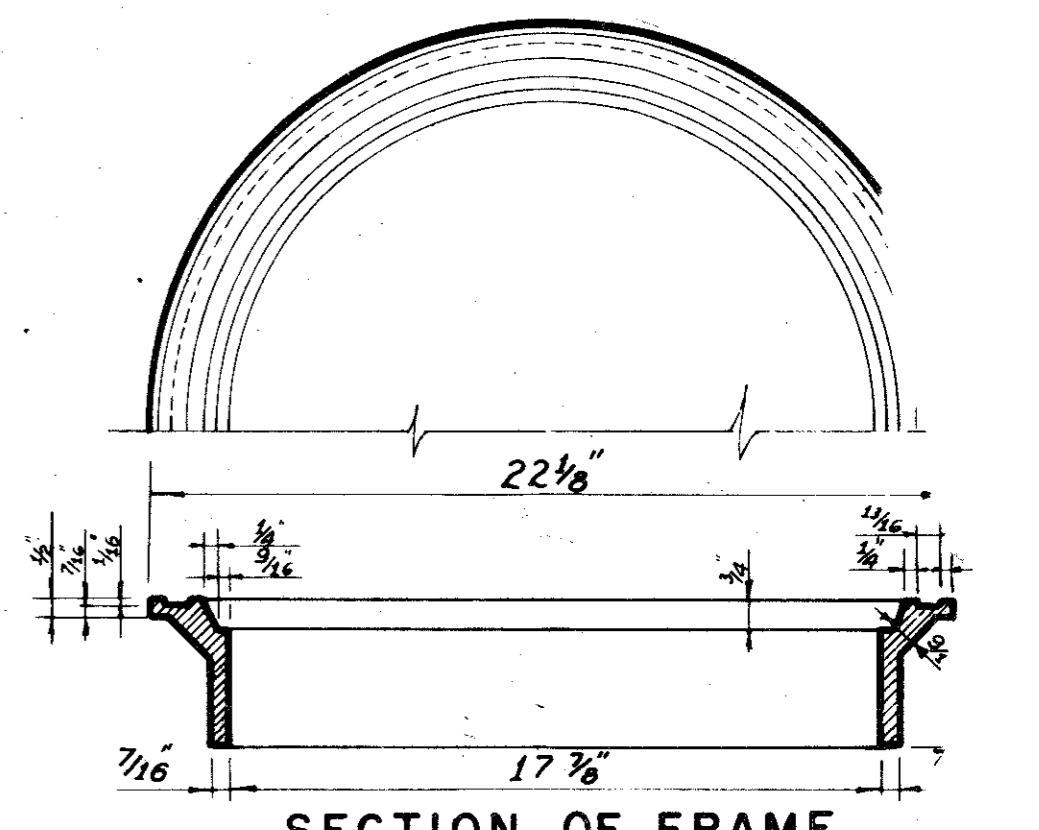
SECTION D-D



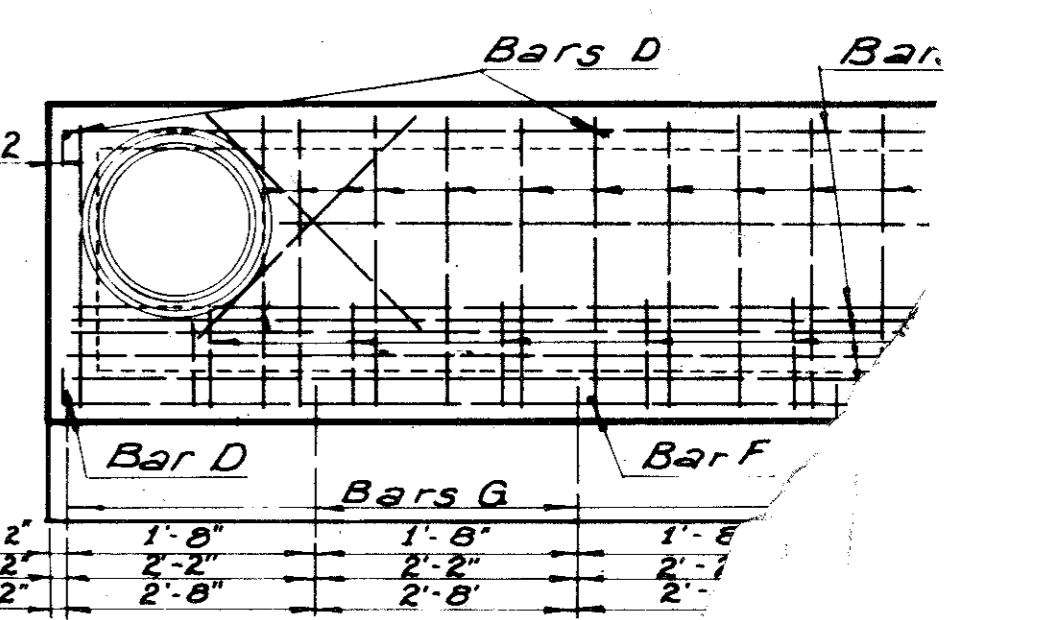
SECTION C-C



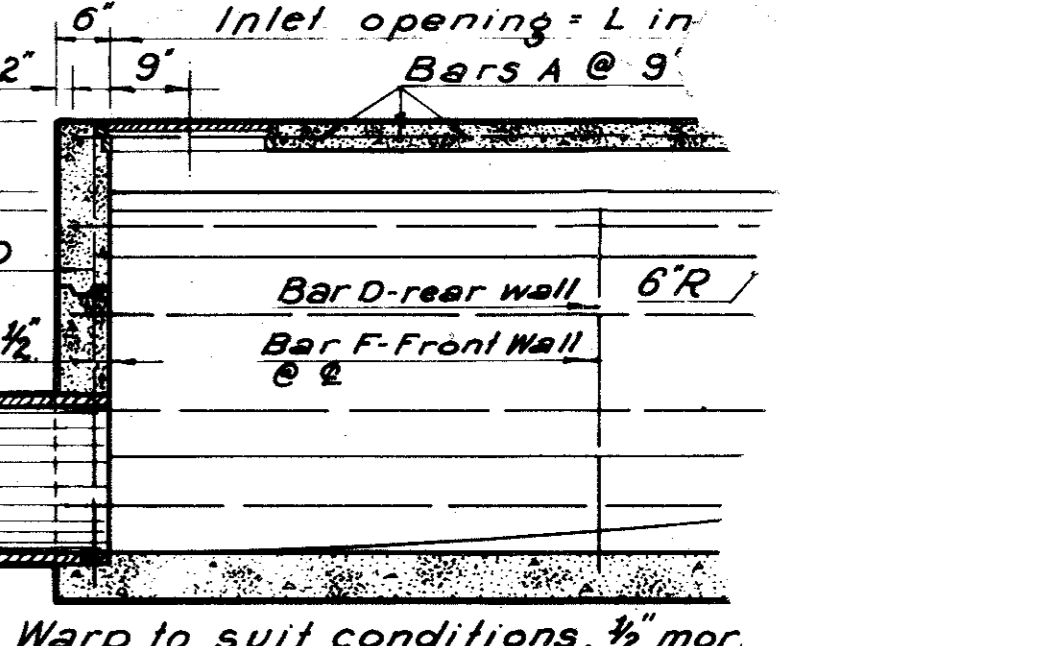
PLAN OF COVER



SECTION OF FRAME INLET FRAME AND COVER



REINFORCING



SECTION B-L

CITY OF ADAMS
COUNTY OF DALHOUSIE
DEPARTMENT OF PUBLIC WORKS
STANDARD CURB AND GUTTER
BELT LINE
GINN, INC.