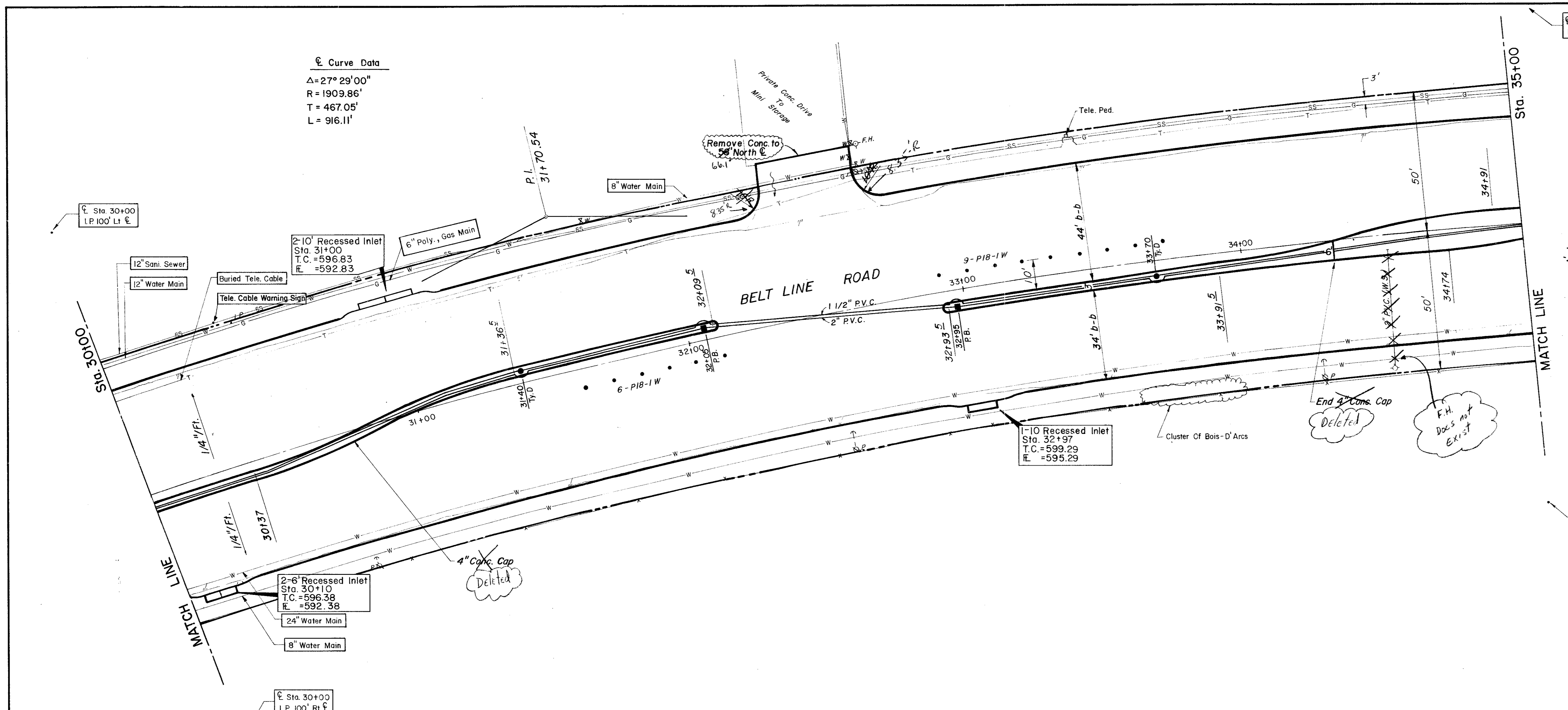
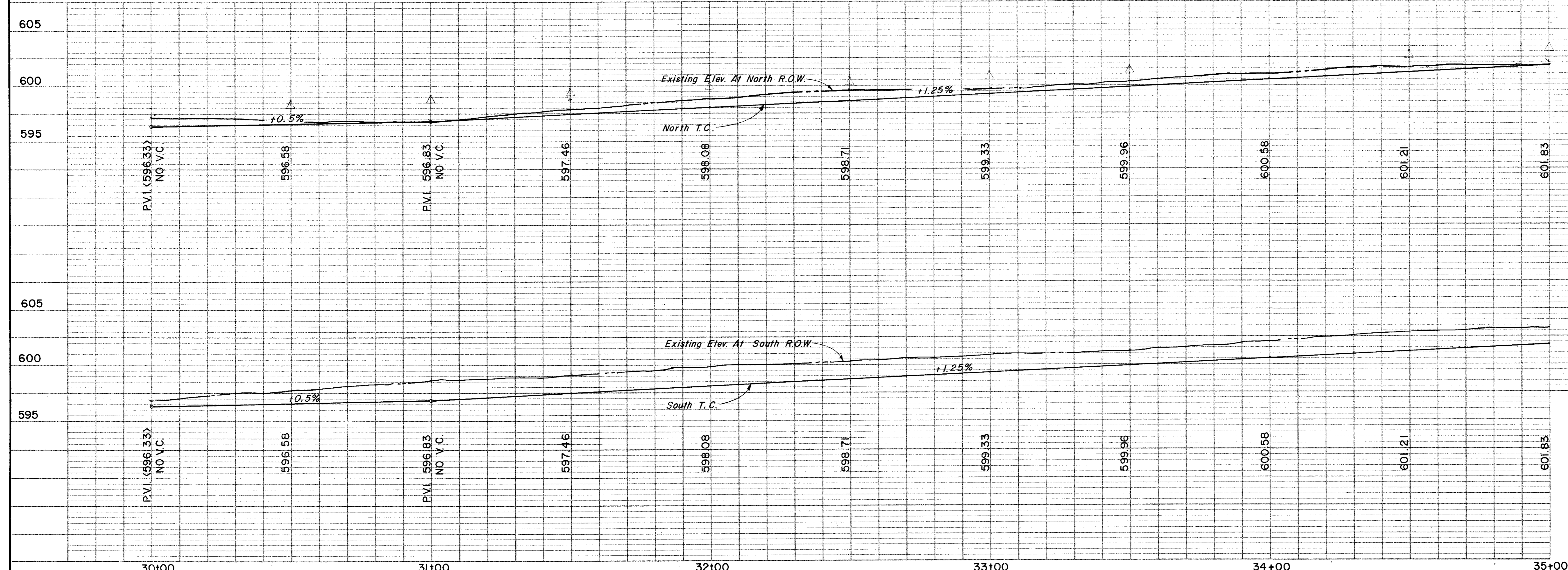


Curve Data
 $\Delta = 27^\circ 29' 00''$
 $R = 1909.86'$
 $T = 467.05'$
 $L = 916.11'$



ESTIMATED QUANTITIES			
ITEM	DESCRIPTION	UNIT	QUANTITY
100	Prepare Roadway R.O.W.	Sta.	5
104.1	Remove Old Concrete, Pavement & Median	SY	—
104.2	Sawed Break-Out Groove	LF	34
110	Unclassified Road Excavation (Dens Cont.)	CY	4262
160	Placing 4" Topsoil	CY	9.19
248	6" Flex Base (Dens Cont) (Ty A, Gr 2, Cl 3)	CY	—
260.1	Lime (Ty A) Slurry Method	Ton	56.53
260.2	6" Lime Treated Subgrade (Dens Cont)	SY	4522.73
340.1	3" Hot Mix Asphalt (Ty D) Resurf Shoulder	Ton	91.68
340.2	6" Hot Mix Asphalt (Ty B)	Ton	—
360.1	8" Conc Pavement (3000 PSI)	SY	4294.74
360.2	6" Conc Monolithic Curb (3000 PSI)	LF	1693
360.3	4" Non-Reinf Conc In Median (2000 PSI)	SY	120.98
479.1	Adjust Water Valve	EA	1
640.5	2" PVC SCH 40 (Conc. Encasement)	LF	45
522	Conc Curb & Gutter Class A	LF	—
524	Conc Driveways, Appr 5 Reinf Conc (3000 PSI)	SY	72.82
630.1	Foundation (Ty A) Traffic Sig In Place	EA	—
630.2	Foundation (Ty B) Traffic Sig In Place	EA	—
630.3	Foundation (Ty C) Traffic Sig In Place	EA	—
630.4	Foundation (Ty D) Illumination	EA	2
640.1	1/2" PVC Conduit, Furnish & Install	LF	500
640.2	2" PVC Conduit, Furnish & Install	LF	500
640.3	3" PVC Conduit, Furnish & Install	LF	—
640.4	Pull Box, Complete In Place	EA	2
752.1	Traffic Buttons - Single Refl Ty P15 White	EA	52
752.2	Traffic Buttons - Single Refl Ty P18-1 White	EA	15
754.1	Traffic Buttons - Nonrefl, Ty P7 White	EA	252

LEGEND	
□	Survey Mark
○	Iron Pin
→	Movement
WS	Gas Main
W	Gas Valve
GL	Gas Line
PL	Power Pole (Typical Pole Symbol)
—	Power Line
—	Guy Wire Anchor
—	Telephone Line
—	Water Main
—	Water Valve
—	Water Line
—	Fire Hydrant
—	Manhole
—	Sanitary Sewer Line
—	Fence Line
—	Flow Direction Indicator
—	Property or Right-of-Way Line (R.O.W.)
—	Easement Line
—	Traffic Pole Size
—	Mon. Arm Pole Foundation (Type A or B)
—	Federal Pole Foundation (Type C)
—	Signal Illumination Pole Foundation (Type D)
T.C.	Top of Curb
E	Flow Line



CITY OF ADDISON
COUNTY OF DALLAS, TEXAS
 DEPARTMENT OF PUBLIC WORKS
 PAVING Sta. 30+00 to 35+00
BELT LINE ROAD
 MARSH LANE TO NORTH DALLAS PKWY.
 GINN, INC., CONSULTING ENGINEERS

DESIGNED - H.B.J. DRAWN - S.M. DATE - MAY - 1980 FILE
 APPROVED - H.W.G. CHECKED - B.H. SCALE - H=1"=20' / V=1"=5' SHEET 12 OF