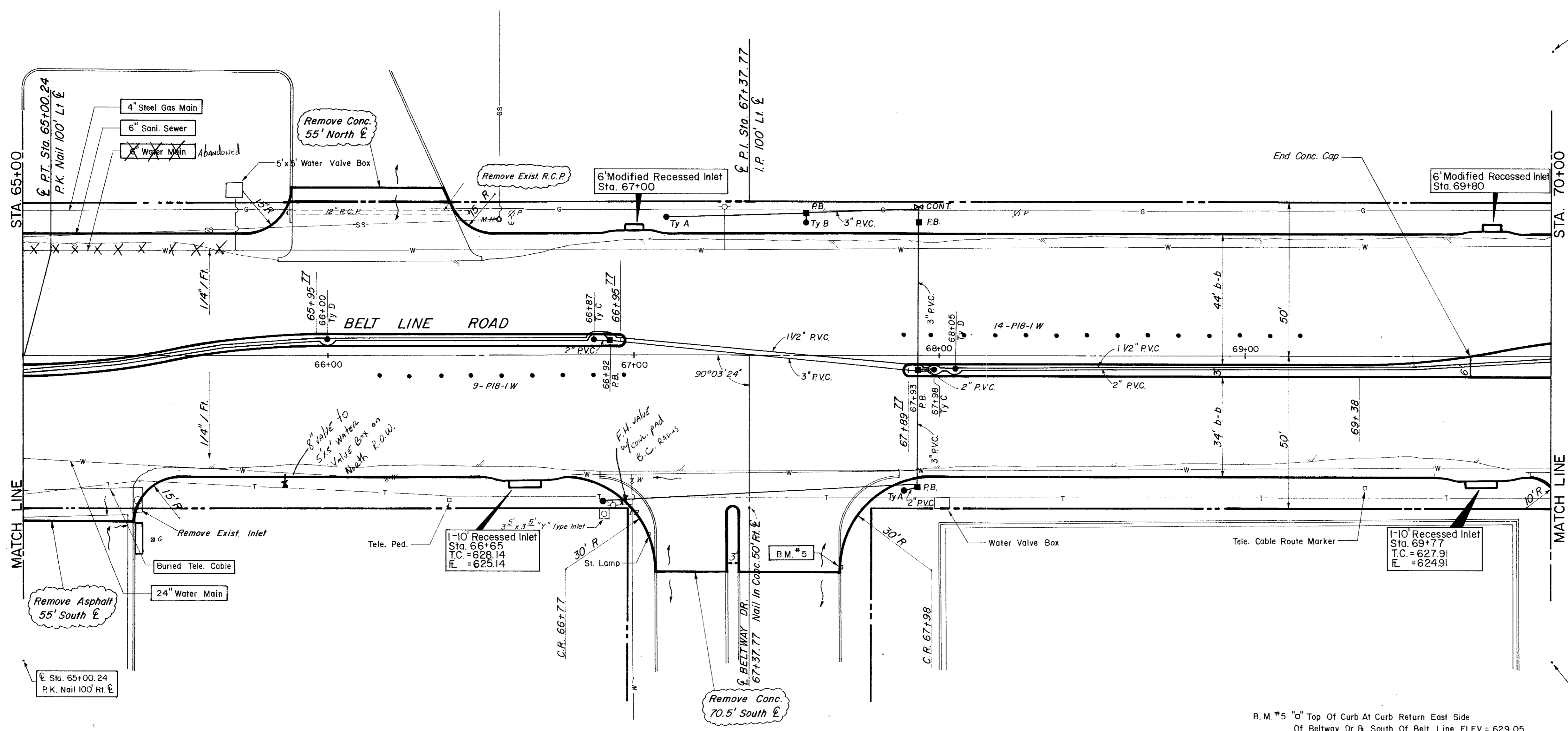
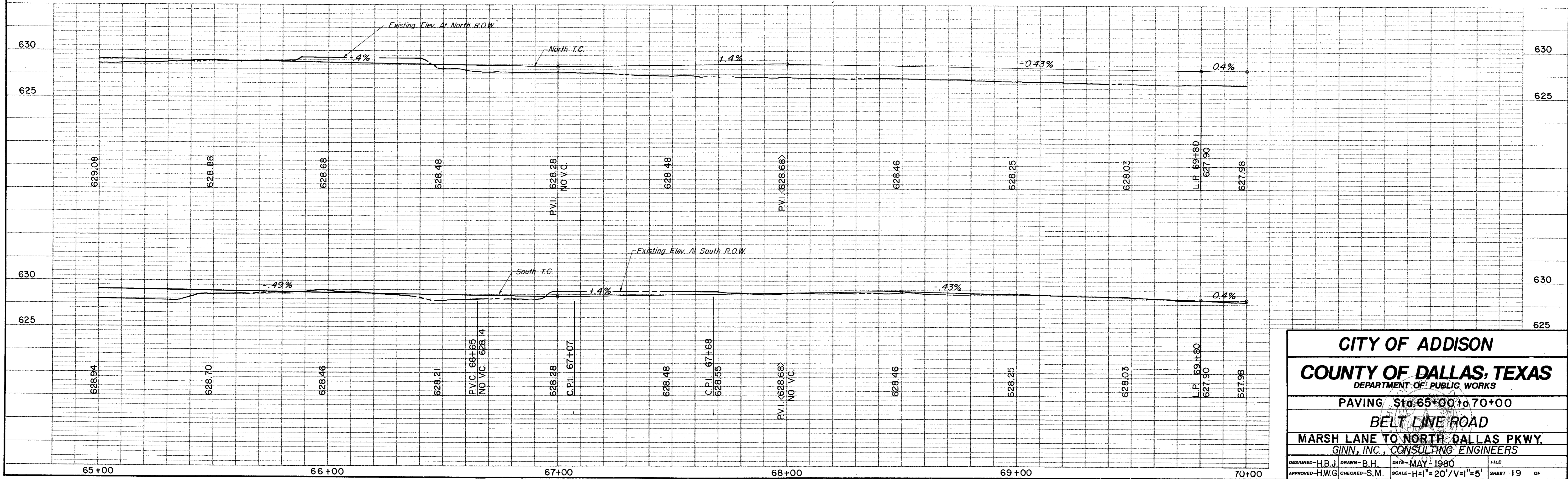


ESTIMATED QUANTITIES			
ITEM	DESCRIPTION	UNIT	QUANTITY
100.	Prepare Roadway R.O.W	Sta.	5
104.1	Remove Old Concrete, Pavement & Median	SY	239
104.2	Sawed Break-Out Groove	LF	146
110	Unclassified Road Excavation (Dens Cont.)	CY	2154
160	Placing 4" Topsoil	CY	1.88
248	6" Flex Base (Dens Cont) (Ty A, Gr 2, Cl 3)	CY	
260.1	Lime (Ty A) Slurry Method	Ton	46.89
260.2	6" Lime Treated Subgrade (Dens Cont)	SY	3751.40
340.1	3" Hot Mix Asphalt (Ty D) Resurf Shoulder	Ton	75.17
340.2	6" Hot Mix Asphalt (Ty B)	Ton	349.70
360.1	8" Conc Pavement (3000 PSI)	SY	4590.99
360.2	6" Conc Monolithic Curb (3000 PSI)	LF	1578
360.3	4" Non-Reinf Conc In Median (2000 PSI)	SY	139.82
479.2	Adjust Manhole	EA	3
630.5	Signal Cont. Foundation	EA	1
522	Conc Curb & Gutter Class A	LF	
524	Conc Driveways, Appr 5" Reinf Conc (3000 PSI)	SY	174.52
630.1	Foundation (Ty A) Traffic Sig In Place	EA	2
630.2	Foundation (Ty B) Traffic Sig In Place	EA	1
630.3	Foundation (Ty C) Traffic Sig In Place	EA	2
630.4	Foundation (Ty D) Illumination	EA	2
640.1	1/2" PVC Conduit, Furnish & Install	LF	500
640.2	2" PVC Conduit, Furnish & Install	LF	419
640.3	3" PVC Conduit, Furnish & Install	LF	276
640.4	Pull Box, Complete In Place	EA	5
752.1	Traffic Buttons-Single Refl Ty P15 White	EA	44
752.2	Traffic Buttons-Single Refl Ty P13-I White	EA	23
754.1	Traffic Buttons-Nonrefl, Ty P7 White	EA	220

LEGEND	
□	Back Mark
○	Iron Pin
●	Manhole
⊕	Gas Meter
⊕	Gas Valve
⊕	Gas Line
⊕	Power Pole (Typical Pole Symbol)
⊕	Power Line
⊕	Guy Wire Anchor
⊕	Telephone Line
⊕	Water Meter
⊕	Water Valve
⊕	Water Line
⊕	Fire Hydrant
⊕	Manhole
⊕	Sanitary Sewer Line
⊕	Fence Line
⊕	Flow Direction Indicator
⊕	Property or Right-of-Way Line (ROAD)
⊕	Easement Line
⊕	Traffic Post Box
⊕	Mark Arm Pole Foundation (Type A or B)
⊕	Pedestal Pole Foundation (Type C)
⊕	Signal Illumination Pole Foundation (Type D)
T.C.	Top Of Curb
F.L.	Flow Line



B.M. #5 "d" Top Of Curb At Curb Return East Side Of Beltway Dr. & South Of Belt Line. ELEV. = 629.05



CITY OF ADDISON
COUNTY OF DALLAS, TEXAS
 DEPARTMENT OF PUBLIC WORKS
 PAVING Sta. 65+00 to 70+00
BELT LINE ROAD
 MARSH LANE TO NORTH DALLAS PKWY.
 GINN, INC., CONSULTING ENGINEERS

DESIGNED - H.B.J. DRAWN - B.H. DATE - MAY - 1980 FILE
 APPROVED - H.W.G. CHECKED - S.M. SCALE - H=1"=20' V=1"=5' SHEET 19 OF