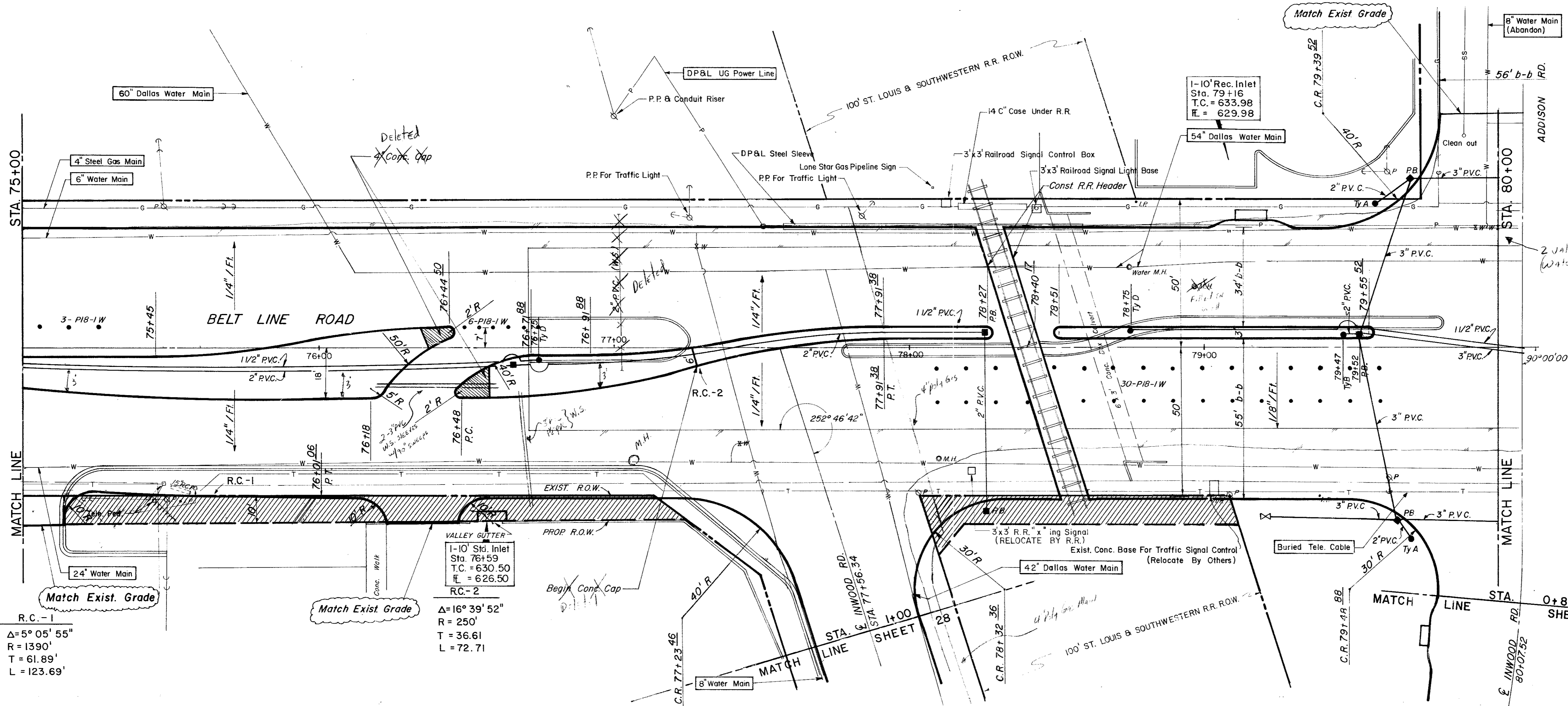


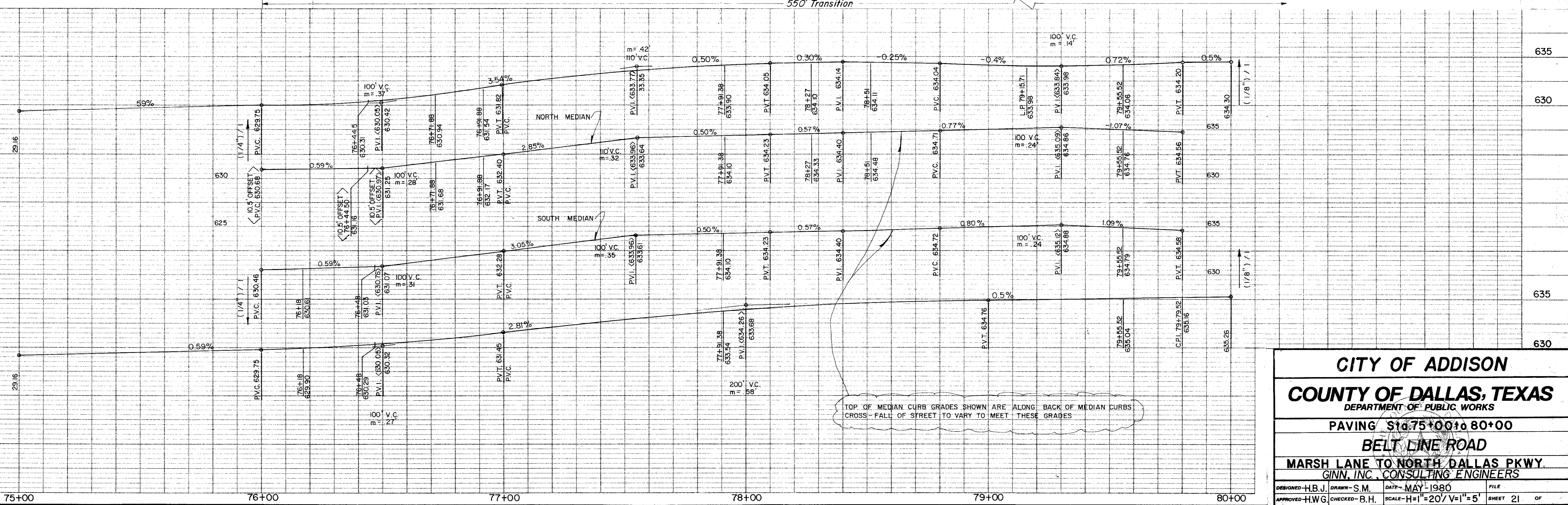
ESTIMATED QUANTITIES			
ITEM	DESCRIPTION	UNIT	QUANTITY
100	Prepare Roadway R.O.W	Sta.	5
104.1	Remove Old Concrete, Pavement & Median	SY	2200
104.2	Sawed Break-Out Groove	LF	643
110	Unclassified Road Excavation (Dens Cont.)	CY	1632
160	Placing 4" Topsoil	CY	35.15
248	6" Flex Base (Dens Cont.) (Ty A, Gr 2, C13)	CY	
260.1	Lime (Ty A) Slurry Method	Ton	57.86
260.2	6" Lime Treated Subgrade (Dens Cont.)	SY	4628.58
340.1	3" Hot Mix Asphalt (Ty D) Resurf Shoulder	Ton	83.85
340.2	6" Hot Mix Asphalt (Ty B)	Ton	211.71
360.1	8" Conc Pavement (3000 PSI)	SY	5118.11
360.2	6" Conc Monolithic Curb (3000 PSI)	LF	1795
360.3	4" Non-Reinf Conc In Median (2000 PSI)	SY	200.59
360.5	Conc. R/R Header	LF	195
479.1	Adjust Water Valves	EA	5
479.2	Adjust Manhole	EA	3
690.5	2" PVC. SCH 40 (Conc. Encasement)	LF	50'
630.5	Signal Cont. Foundation	EA	1
522	Conc Curb & Gutter Class A	LF	
524	Conc Driveways, Appr 5" Reinf Conc (3000 PSI)	SY	62.30
630.1	Foundation (Ty A) Traffic Sig In Place	EA	2
630.2	Foundation (Ty B) Traffic Sig In Place	EA	1
630.3	Foundation (Ty C) Traffic Sig In Place	EA	
630.4	Foundation (Ty D) Illumination	EA	2
640.1	1/2" PVC Conduit, Furnish & Install	LF	300
640.2	2" PVC Conduit, Furnish & Install	LF	412
640.3	3" PVC Conduit, Furnish & Install	LF	273
640.4	Pull Box, Complete In Place	EA	6
752.1	Traffic Buttons - Single Refl Ty P15 White	EA	44
752.2	Traffic Buttons - Single Refl Ty P18-White	EA	41
754.1	Traffic Buttons - Nonrefl, Ty P7 White	EA	220

LEGEND	
○	Beach Mark
○	Iron Pin
○	Manhole
○	Gas Meter
○	Gas Valve
○	Gas Line
○	Power Pole (Typical Pole Symbol)
○	Power Line
○	Guy Wire Anchor
○	Telephone Line
○	Water Meter
○	Water Valve
○	Water Line
○	Fire Hydrant
○	Manhole
○	Sewer Sewer Line
○	Fence Line
○	Flow Direction Indicator
○	Property or Right-of-Way Line (R.O.W.)
○	Encasement Line
○	Traffic Pole Box
○	Mon. Arm Pole Foundation (Type A or B)
○	Pedestal Pole Foundation (Type C)
○	Signal Illumination Pole Foundation (Type D)
○	Top of Curb
○	Flow Line



R.C. - 1
 $\Delta = 5^\circ 05' 55''$
 $R = 1390'$
 $T = 61.89'$
 $L = 123.69'$

R.C. - 2
 $\Delta = 16^\circ 39' 52''$
 $R = 250'$
 $T = 36.61'$
 $L = 72.71'$



TOP OF MEDIAN CURB GRADES SHOWN ARE ALONG BACK OF MEDIAN CURBS
 CROSS-FALL OF STREET TO VARY TO MEET THESE GRADES

CITY OF ADDISON
COUNTY OF DALLAS, TEXAS
 DEPARTMENT OF PUBLIC WORKS

PAVING STA 75+00 TO 80+00
BELT LINE ROAD
 MARSH LANE TO NORTH DALLAS PKWY.
 GINN, INC., CONSULTING ENGINEERS

DESIGNED - H.B.J. DRAWN - S.M. DATE - MAY - 1980 FILE
 APPROVED - H.W.G. CHECKED - B.H. SCALE - H=1"=20' V=1"=5' SHEET 21 OF