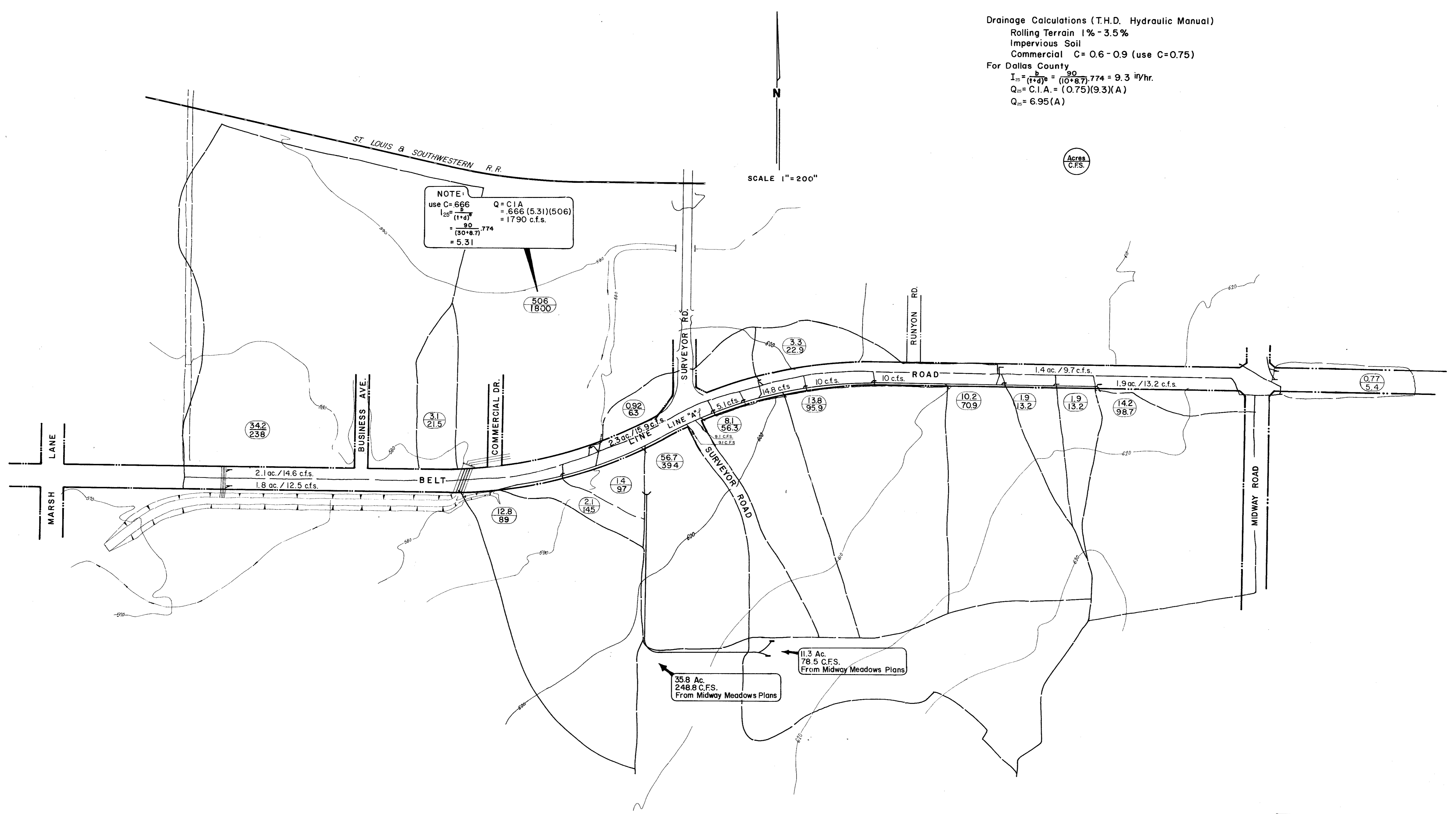


Drainage Calculations (T.H.D. Hydraulic Manual)
 Rolling Terrain 1% - 3.5%
 Impervious Soil
 Commercial C = 0.6 - 0.9 (use C = 0.75)
 For Dallas County
 $I_{10} = \frac{b}{(1+d)^e} = \frac{90}{(10+8.7)^{.774}} = 9.3 \text{ in/hr.}$
 $Q_{10} = C.I.A. = (0.75)(9.3)(A)$
 $Q_{10} = 6.95(A)$

SCALE 1" = 200'

NOTE:
 use C = 666
 $I_{25} = \frac{b}{(1+d)^e} = \frac{90}{(10+8.7)^{.774}} = 5.31$
 $Q = C.I.A. = 666(5.31)(506) = 1790 \text{ c.f.s.}$



35.8 Ac.
248.8 C.F.S.
From Midway Meadows Plans

11.3 Ac.
78.5 C.F.S.
From Midway Meadows Plans

CITY OF ADDISON			
COUNTY OF DALLAS, TEXAS			
DEPARTMENT OF PUBLIC WORKS			
DRAINAGE AREA MAP			
BELT LINE ROAD			
MIDWAY ROAD TO NORTH DALLAS PKWY			
GINN, INC., CONSULTING ENGINEERS			
DESIGNED - H.B.J.	DRAWN - B.H.	DATE - MAY - 1980	FILE
APPROVED - H.W.G.	CHECKED - S.M.	SCALE - 1" = 200'	SHEET 29 OF